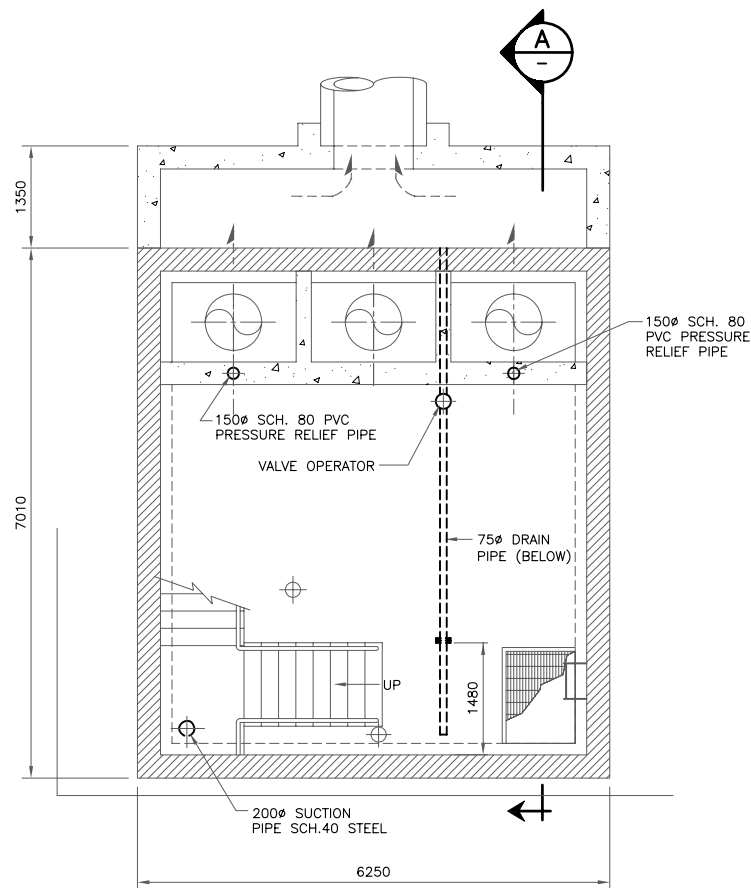


GENERAL NOTES:

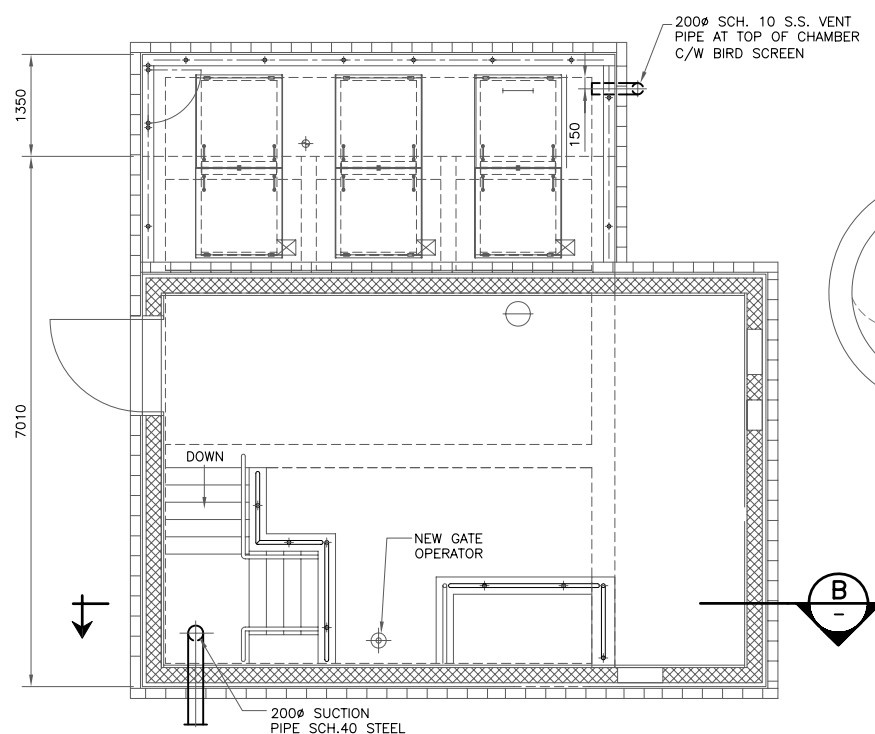
1. PROVIDE NEW SUMP PUMP AS PER SPECIFICATIONS.

DEMOLITION NOTES:

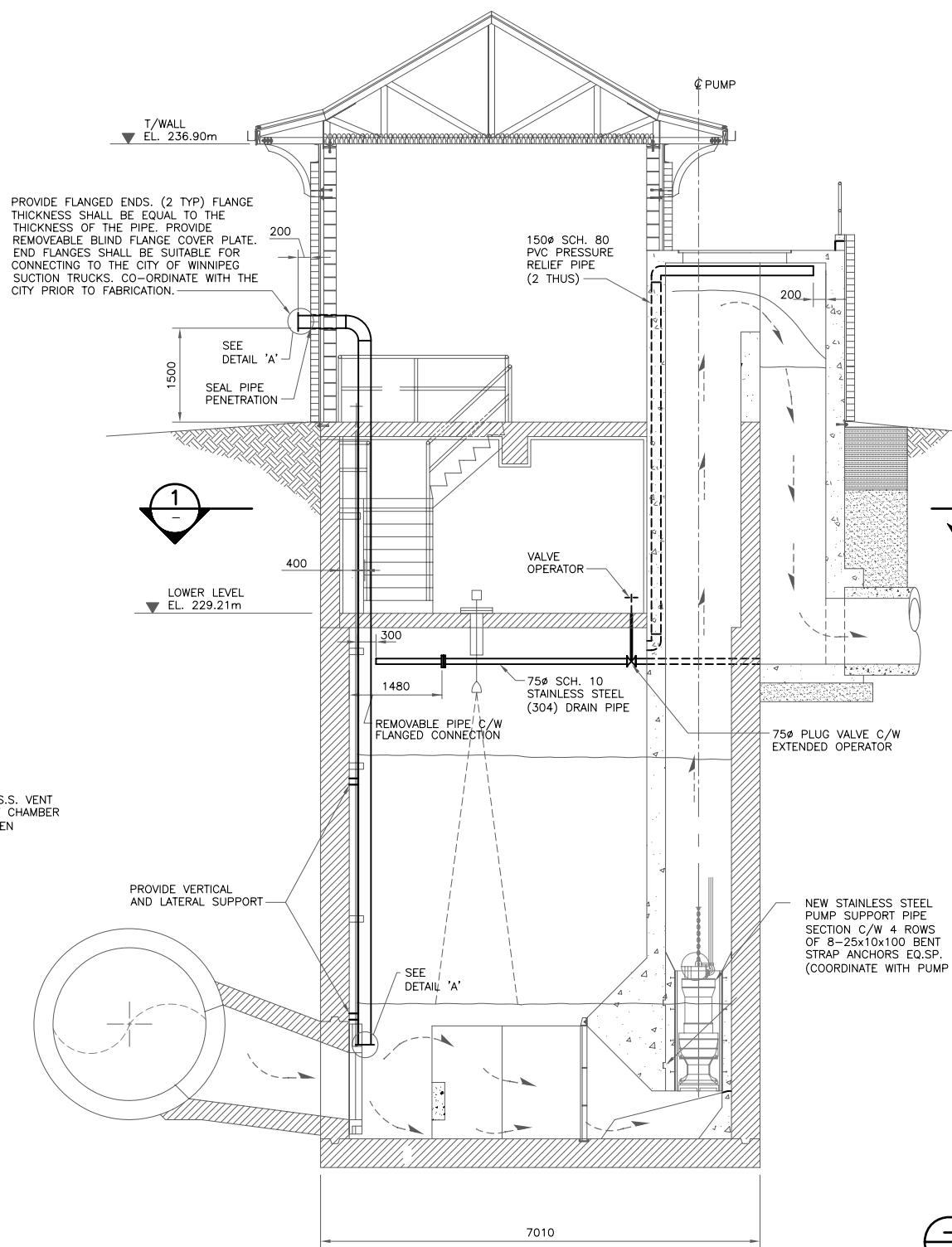
1. REMOVE EXISTING PUMPS 2 AND 3, AND ALL ASSOCIATED PIPING AND CONTROLS. CUT PIPES IN LOWER LEVEL (TWO LOCATIONS) FLUSH WITH WALL.
2. TURN OVER THE 2 TEMPORARY PUMPS & RELATED DISCHARGE HOSE AND PIPE FITTINGS TO THE CITY OF WINNIPEG.
3. ALL REMOVED MATERIAL SHALL BE DISPOSED OF OFF SITE.
4. OBTAIN EXISTING PUMP LOCATIONS, PIPE ROUTING, ETC. IN FIELD.



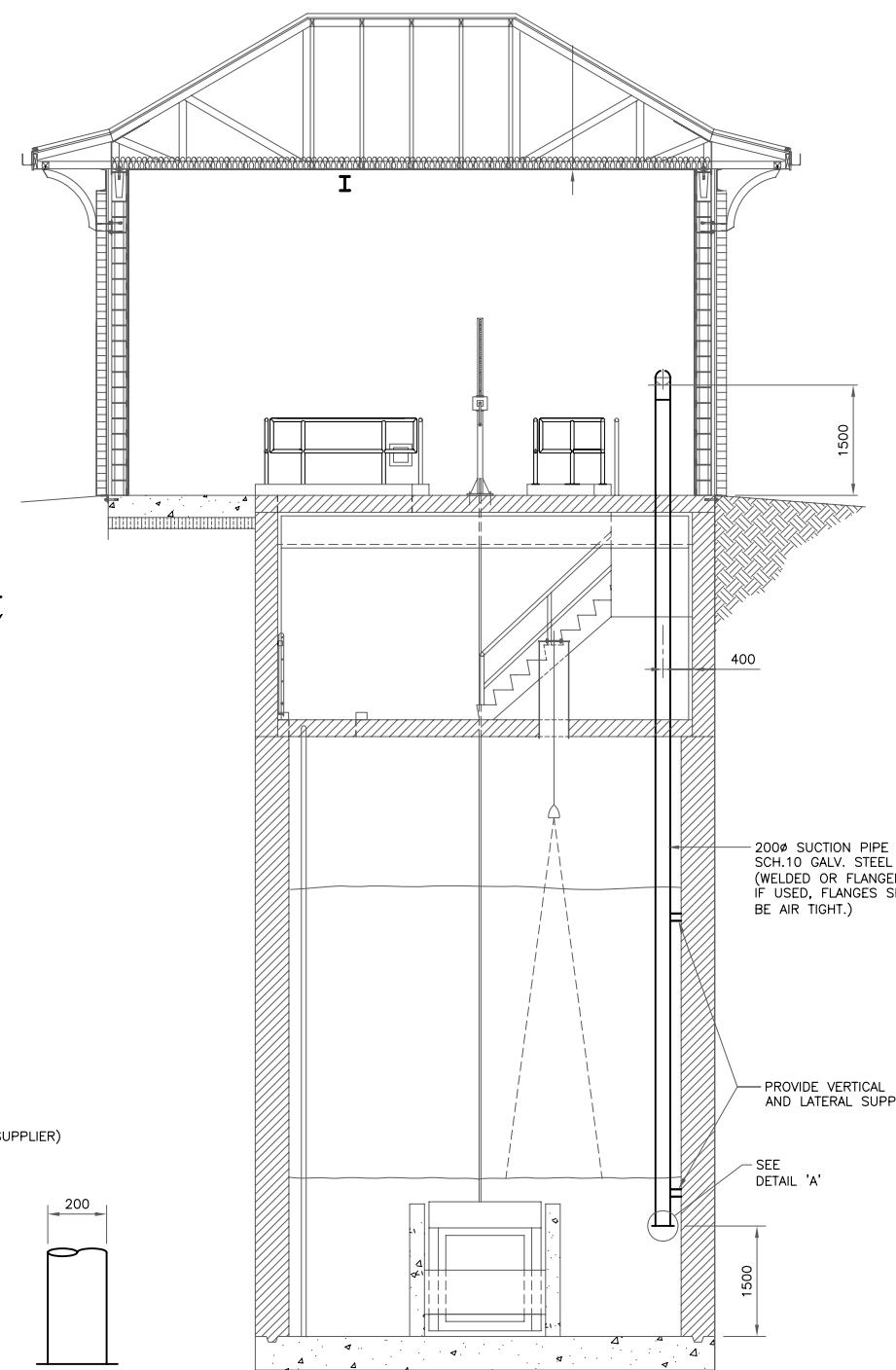
1 FLOOR PLAN (EL. 229.21m)
SCALE: 1:50



2 FLOOR PLAN (EL. 232.28m)
SCALE: 1:50

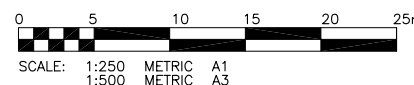


A STATION SECTION
SCALE: 1:50



B STATION SECTION
SCALE: 1:50

DETAIL 'A'
SCALE: NTS



METRIC
WHOLE NUMBERS INDICATE MILLIMETRES
DECIMALIZED NUMBERS INDICATE METRES

B.M.	XX-XXX	ELEV.	XXX.XXX
0	ISSUED FOR CONSTRUCTION	08/09/23	PSS
NO.	REVISIONS	DATE	BY
		08/02/29	

KGS GROUP
CONSULTING ENGINEERS & PROJECT MANAGERS
WINNIPEG (204) 896-1209
THUNDER BAY (807) 345-2233

DESIGNED BY	PSS	CHECKED BY	RED
DRAWN BY	ML	APPROVED BY	
SCALE:	AS NOTED	RELEASED FOR CONSTRUCTION:	
DATE	08/02/29	DATE	

ENGINEER'S SEAL
THE ORIGINAL ISSUE REV. 0 WAS STAMPED, DATED AND SIGNED
BY P.S. SILVA
ON 23/09/08
D/M/Y
CONSULTANT DRAWING NO.
08-0107-03-M2

THE CITY OF WINNIPEG
WATER & WASTE DEPARTMENT

RAVELSTON LAND DRAINAGE PUMPING STATION UPGRADE
MECHANICAL PIPING

SHEET **02** OF **02**
CAD FILE DRAWING NUMBER **08-0107-03-01**
CITY DRAWING NUMBER **LD-5092**