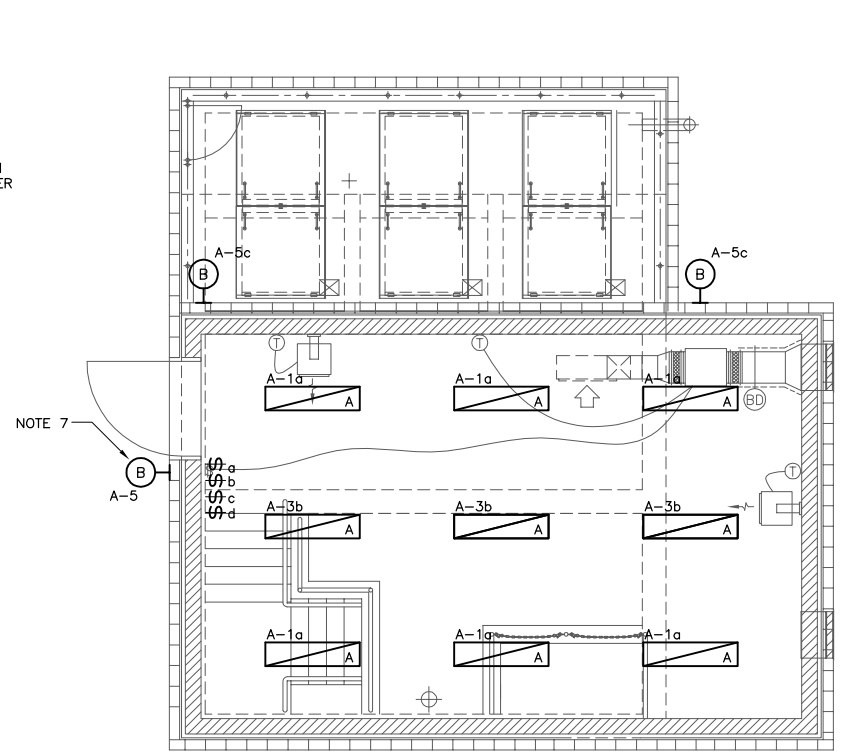
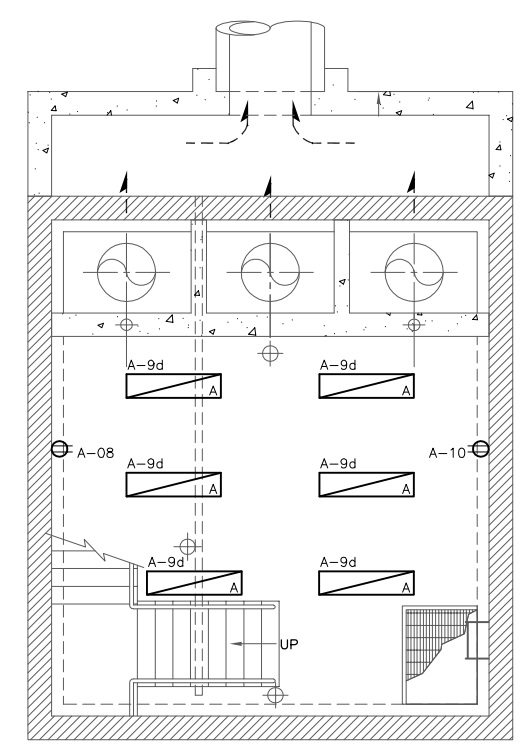


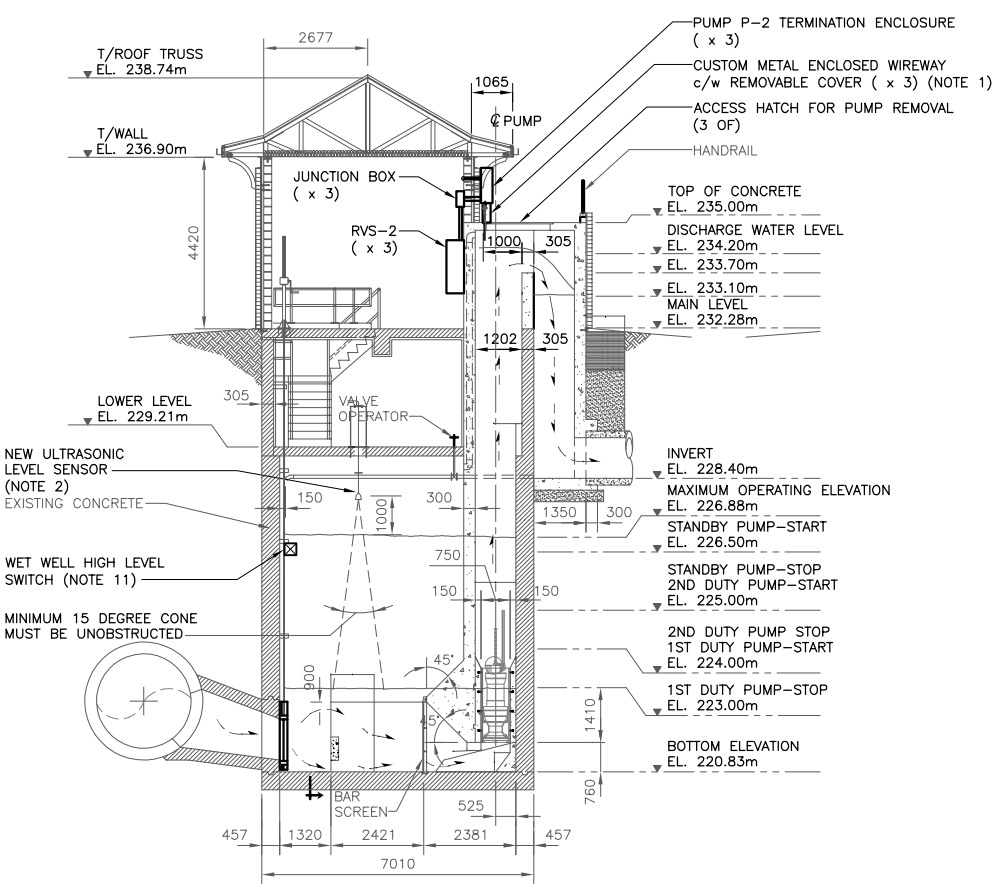
**1** POWER PLAN (EL. 232.00m)  
SCALE: 1:50



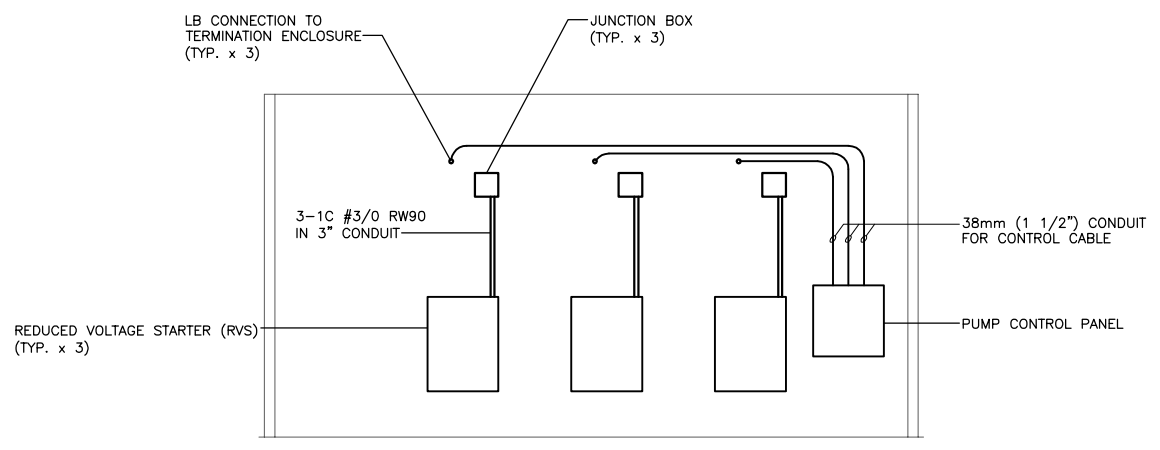
**2** LIGHTING PLAN (EL. 232.00m)  
SCALE: 1:50



**3** POWER & LIGHTING PLAN (EL. 229.21m)  
SCALE: 1:50



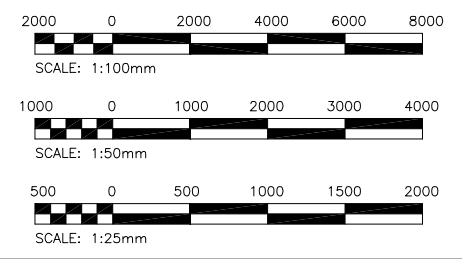
**A** STATION SECTION  
SCALE: 1:100



**B** ELEVATION  
SCALE: 1:25

**NOTES:**

1. PROVIDE 6.35mm (1/4") THICK PLATE CUSTOM WIREWAY FOR ROUTING OF PUMP CABLES FROM WET WELL TO TERMINATION ENCLOSURE. WIREWAY SHALL BE HOT DIP GALVANIZED OR ALUMINUM. (SEE DWG LD-5084)
2. LEVEL SENSOR SHALL BE INSTALLED IN ACCORDANCE WITH MANUFACTURER'S RECOMMENDATIONS.
3. COORDINATE LOCATION OF EQUIPMENT WITH VENTILATION EQUIPMENT.
4. CITY WILL TURN OVER SCADA PANEL FOR THE CONTRACTOR TO MOUNT WITHIN THE ELECTRICAL ROOM. THE CONTRACTOR SHALL BE RESPONSIBLE FOR CONNECTION OF THE CONTROL CABLING AS INDICATED ON THE CONTROL SCHEMATIC, PROVIDING POWER TO THE PANEL AND CONNECTION OF THE PHONE LINE. THE CITY SHALL PERFORM ALL OTHER REQUIRED CONFIGURATION AND COMMISSIONING OF THE PANEL.
5. ALL WIRING WITHIN THE FLOOD PUMP STATION SHALL BE RUN IN RIGID PVC CONDUIT OR TECK CABLE, UNLESS OTHERWISE NOTED.
6. RUN NEW FEEDER CABLES FROM MH TRANSFORMER TO MDP-1.
7. LUMINAIRE SHALL BE COMPLETE WITH PHOTOCELL CONTROL.
8. METERING ENCLOSURE SHALL BE VANDAL RESISTANT.
9. RECEPTACLE SHALL BE A 30A/120V/1P TWISTLOCK RECEPTACLE.
10. RECEPTACLE SHALL BE A 30A/240V/1P TWISTLOCK RECEPTACLE.
11. INSTALL WET WELL HIGH LEVEL SWITCH SUCH THAT IT IS ACCESSIBLE FROM WET WELL LADDER BUT THE LADDER DOES NOT INTERFERE WITH ITS OPERATION. SWITCH SHOULD BE SET TO ACTIVATE AT ELEVATION 225.25m.
12. EXISTING ELECTRICAL TO BE DEMOLISHED WITH EXISTING RVS'S TO BE TURNED OVER TO CITY.
13. EXHAUST FAN EF-1 STARTER CIRCUIT TO BE AS PER DETAIL 1 ON DRAWING LD-5100.
14. EXHAUST FAN EF-2 SHALL HAVE A MANUAL STARTER.



**METRIC**  
WHOLE NUMBERS INDICATE MILLIMETRES  
DECIMALIZED NUMBERS INDICATE METRES

B.M. : ELEV. :  NO. REVISIONS DATE BY	<b>KGS GROUP</b> CONSULTING ENGINEERS & PROJECT MANAGERS WINNIPEG (204) 896-1209 THUNDER BAY (807) 345-2233		ENGINEER'S SEAL  THE ORIGINAL ISSUE REV. 0 WAS STAMPED, DATED AND SIGNED BY E. WILLMS, P.ENG. ON 23/09/08	<b>THE CITY OF WINNIPEG</b> WATER AND WASTE DEPARTMENT PROJECT TITLE <b>RAVELSTON LAND DRAINAGE PUMPING STATION ELECTRICAL PLAN</b> SHEET OF <b>01 08</b> COMPUTER FILE NAME <b>08-0107-03E01.dwg</b> CITY DRAWING NUMBER <b>LD-5093</b>
	DESIGNED BY DDW DRAWN BY MMP	CHECKED BY REW APPROVED BY	CONSULTANT DRAWING NO. <b>08-0107-03E01</b>	
	HOR. SCALE: AS NOTED VERTICAL:	RELEASED FOR CONSTRUCTION:		
	0 ISSUED FOR CONSTRUCTION 08/09/23 REW	DATE 08/07/22	DATE	