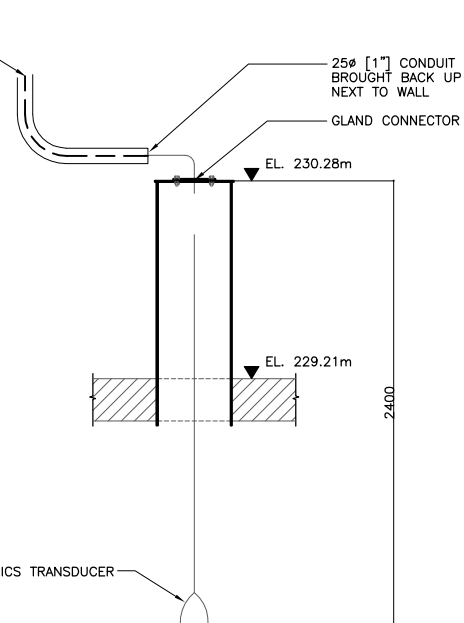
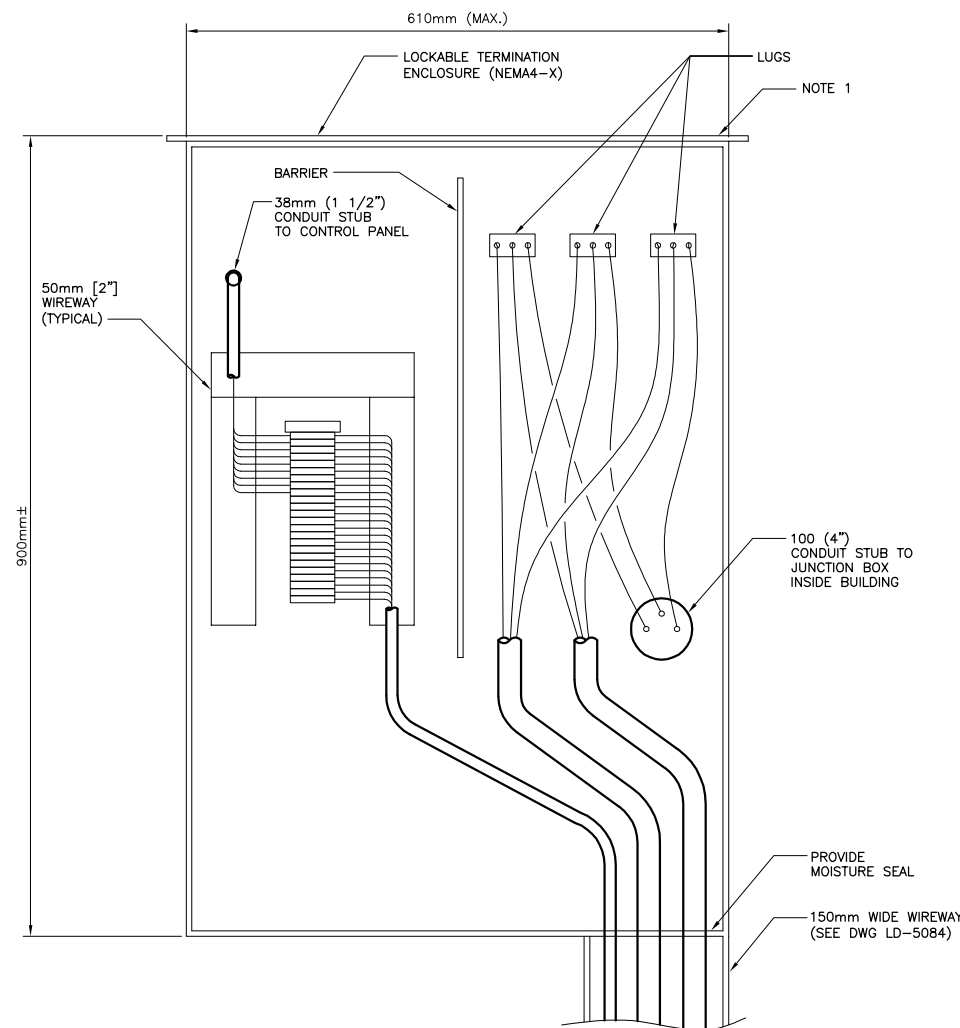


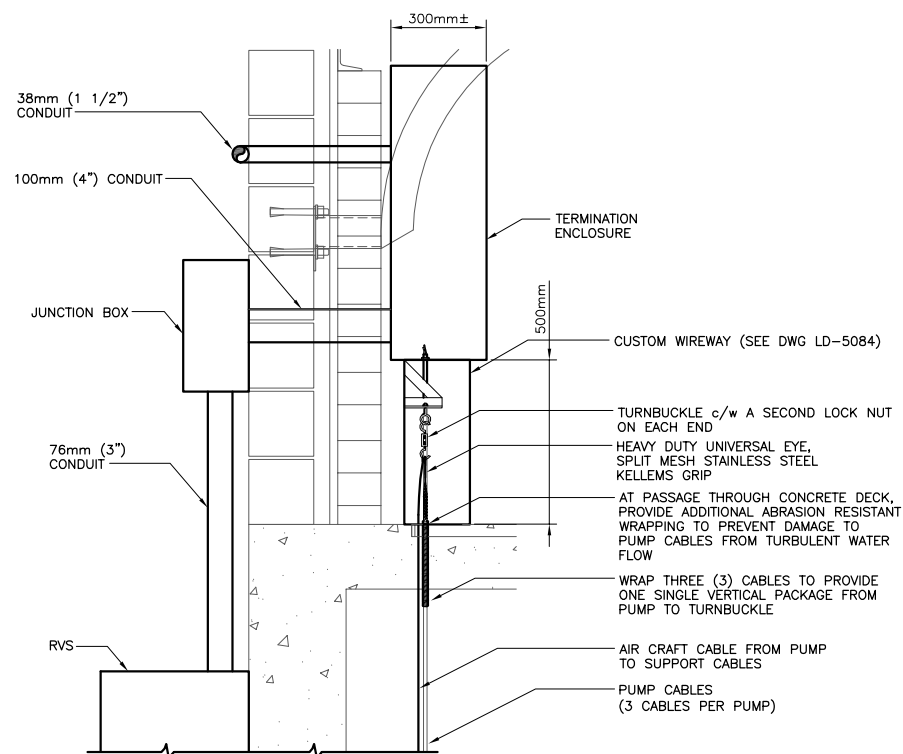
RUN CABLE CONTINUOUS WITH NO JOINTS BACK TO MULTIRANGER IN CONDUIT. LEAVE 2m LENGTH COILED AT BLIND FLANGE FOR FUTURE CONNECTION.



B DETAIL - LEVEL SENSOR
SCALE: 1:20



C DETAIL - TERMINATION ENCLOSURE
SCALE: N.T.S.



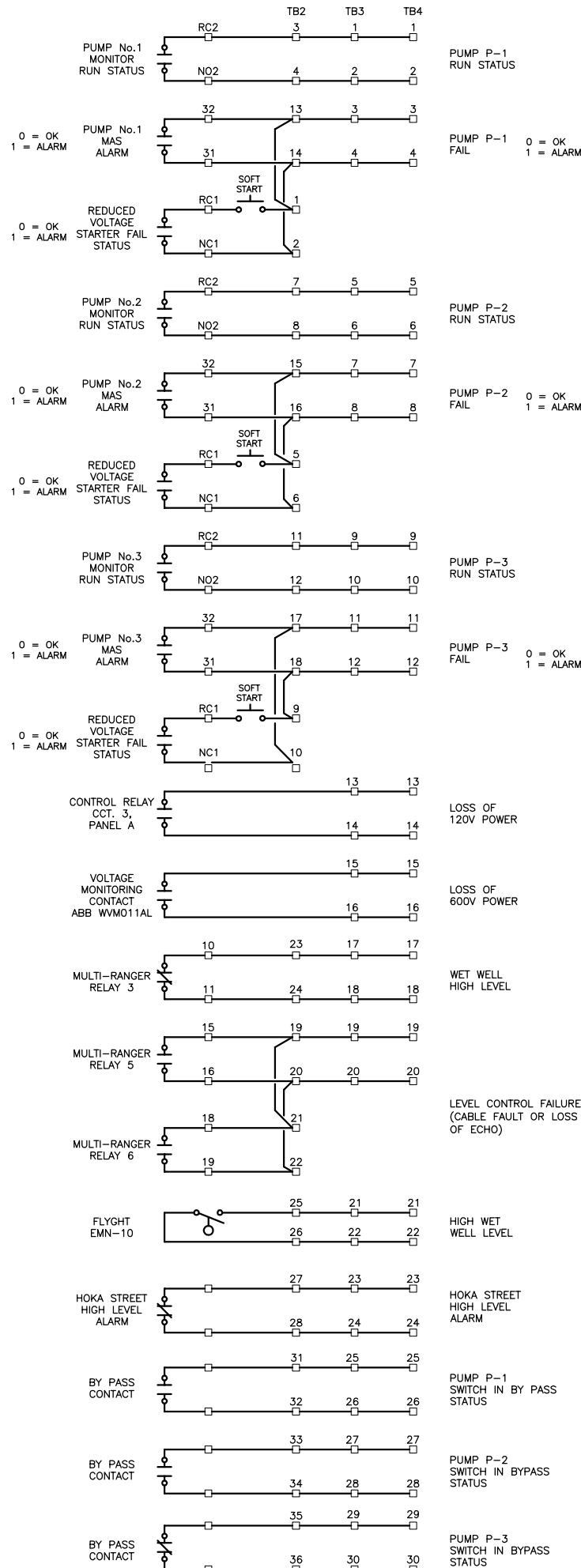
D SECTION DETAIL
SCALE: N.T.S.

NOTES:

- ENCLOSURE SHALL BE A MAXIMUM OF 610mm (24") WIDE SO AS TO NOT INTERFERE WITH ACCESS HATCH GATE.

LEGEND:

- () CONDUCTOR IDENTIFICATION
- STARTER TERMINALS
- ▣ UC TERMINALS
- ▣ DEVICE TERMINALS
- FIELD WIRING
- PANEL WIRING
- WIRE CONNECTION



A CONTROL ELEMENTARY DIAGRAMS
SCALE: N.T.S.

COWLEGGEND

B.M. ELEV.	
ISSUED FOR CONSTRUCTION	08/09/23
NO. REVISIONS	DATE BY
0	08/01/14

KGS GROUP		CONSULTING ENGINEERS & PROJECT MANAGERS	
WINNIPEG (204) 896-1209		THUNDER BAY (807) 345-2233	
DESIGNED BY	DDW	CHECKED BY	REW
DRAWN BY	GCN	APPROVED BY	
HOR. SCALE:	N.T.S.	RELEASED FOR CONSTRUCTION:	
VERTICAL:		DATE	08/01/14

ENGINEER'S SEAL	
THE ORIGINAL ISSUE REV. 0 WAS STAMPED, DATED AND SIGNED	
BY	E. WILLMS, P.ENG.
ON	23/09/08
CONSULTANT DRAWING NO.	08-0107-03E07

THE CITY OF WINNIPEG WATER AND WASTE DEPARTMENT	
PROJECT TITLE RAVELSTON LAND DRAINAGE PUMPING STATION ELECTRICAL MISCELLANEOUS DETAILS	
SHEET	07 OF 08
COMPUTER FILE NAME	08-0107-03E07.dwg
CITY DRAWING NUMBER	LD-5099