

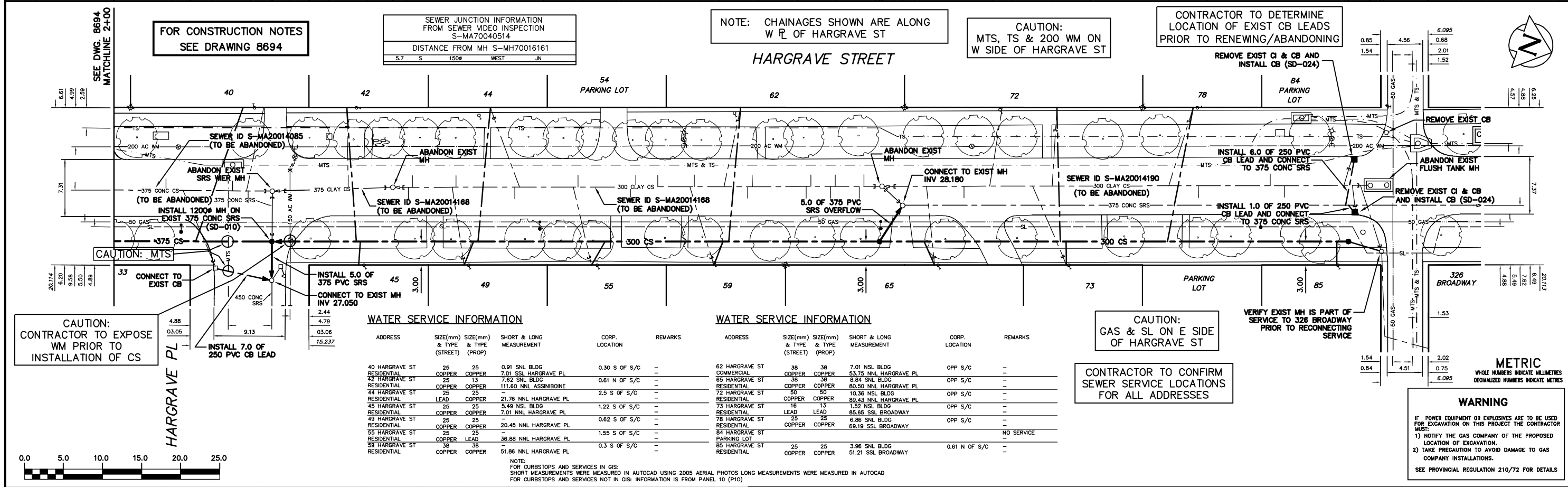
FOR CONSTRUCTION NOTES
SEE DRAWING 8694

SEWER JUNCTION INFORMATION FROM SEWER VIDEO INSPECTION S-MA70040514		
DISTANCE FROM MH S-MH70016161		
5.7	S	150# WEST JN

NOTE: CHAINAGES SHOWN ARE ALONG W R OF HARGRAVE ST

CAUTION: MTS, TS & 200 WM ON W SIDE OF HARGRAVE ST

CONTRACTOR TO DETERMINE LOCATION OF EXIST CB LEADS PRIOR TO RENEWING/ABANDONING



WATER SERVICE INFORMATION					
ADDRESS	SIZE(mm)	SIZE(mm) & TYPE (STREET) (PROP)	SHORT & LONG MEASUREMENT	CORP. LOCATION	REMARKS
40 HARGRAVE ST	25	25	0.91 NSL BLDG	0.30 S OF S/C	-
42 HARGRAVE ST	25	13	7.62 SSL BLDG	0.61 N OF S/C	-
44 HARGRAVE ST	25	25	111.60>NNL ASSINBOINE	2.5 S OF S/C	-
45 HARGRAVE ST	25	25	21.76>NNL HARGRAVE PL	1.22 S OF S/C	-
49 HARGRAVE ST	25	25	5.49 NSL BLDG	0.62 S OF S/C	-
55 HARGRAVE ST	25	25	7.01>NNL HARGRAVE PL	1.55 S OF S/C	-
59 HARGRAVE ST	38	38	36.88>NNL HARGRAVE PL	0.3 S OF S/C	-
62 HARGRAVE ST	38	38	7.01 NSL BLDG	OPP S/C	-
65 HARGRAVE ST	38	38	8.64 SSL BLDG	OPP S/C	-
72 HARGRAVE ST	50	50	10.36 NSL BLDG	OPP S/C	-
73 HARGRAVE ST	16	13	1.52 NSL BLDG	OPP S/C	-
78 HARGRAVE ST	25	25	6.86 SSL BLDG	OPP S/C	-
84 HARGRAVE ST	25	25	69.19 SSL BLDG	NO SERVICE	-
85 HARGRAVE ST	25	25	3.96 SSL BLDG	0.61 N OF S/C	-

WATER SERVICE INFORMATION					
ADDRESS	SIZE(mm)	SIZE(mm) & TYPE (STREET) (PROP)	SHORT & LONG MEASUREMENT	CORP. LOCATION	REMARKS
62 HARGRAVE ST	38	38	7.01 NSL BLDG	OPP S/C	-
65 HARGRAVE ST	38	38	8.64 SSL BLDG	OPP S/C	-
72 HARGRAVE ST	50	50	10.36 NSL BLDG	OPP S/C	-
73 HARGRAVE ST	16	13	1.52 NSL BLDG	OPP S/C	-
78 HARGRAVE ST	25	25	6.86 SSL BLDG	OPP S/C	-
84 HARGRAVE ST	25	25	69.19 SSL BLDG	NO SERVICE	-
85 HARGRAVE ST	25	25	3.96 SSL BLDG	0.61 N OF S/C	-

CAUTION: GAS & SL ON E SIDE OF HARGRAVE ST

VERIFY EXIST MH IS PART OF SERVICE TO 326 BROADWAY PRIOR TO RECONNECTING SERVICE

CONTRACTOR TO CONFIRM SEWER SERVICE LOCATIONS FOR ALL ADDRESSES

METRIC
WHOLE NUMBERS INDICATE MILLIMETRES
DECIMALIZED NUMBERS INDICATE METRES

WARNING
IF POWER EQUIPMENT OR EXPLOSIVES ARE TO BE USED FOR EXCAVATION ON THIS PROJECT THE CONTRACTOR MUST:
1) NOTIFY THE GAS COMPANY OF THE PROPOSED LOCATION OF EXCAVATION.
2) TAKE PRECAUTION TO AVOID DAMAGE TO GAS COMPANY INSTALLATIONS.
SEE PROVINCIAL REGULATION 210/72 FOR DETAILS

EXISTING	LEGEND-PLAN	PROPOSED	EXISTING	LEGEND-PLAN	PROPOSED	EXISTING	LEGEND-PROFILE	PROPOSED
200 WM	WATERMAIN	200 WM	SL, HYDRO	150 WM	WATERMAIN	150 WM	LOCATION APPROVED	
525 LDS	LAND DRAINAGE SEWER	525 LDS	TRAFFIC SIGNALS	300 LDS	LAND DRAINAGE SEWER	300 LDS	UNDERGROUND STRUCTURES	
375 WWS	WASTEWATER SEWER	375 WWS	SURVEY BAR	250 WWS	WASTEWATER SEWER	250 WWS	DATE	
MANHOLE	MANHOLE	FENCE	POLE - HYDRO, MTS	PROFILE	PROFILE	PROFILE	NOTE:	
CATCH BASIN	CATCH BASIN	CURB STOP	GUY ANCHOR	GROUND ABOVE PIPE	GROUND ABOVE PIPE	GROUND ABOVE PIPE	LOCATION OF UNDERGROUND STRUCTURES AS SHOWN ARE BASED ON THE BEST INFORMATION AVAILABLE BUT NO GUARANTEE IS GIVEN THAT THE GIVEN LOCATIONS ARE EXACT. CONFIRMATION OF EXISTENCE AND EXACT LOCATION OF ALL SERVICES MUST BE OBTAINED FROM THE INDIVIDUAL UTILITIES BEFORE PROCEEDING WITH CONSTRUCTION.	
JUNCTIONS	JUNCTIONS	GUY ANCHOR	LIGHT STANDARD	€ DITCH (NORTH & WEST)	€ DITCH (NORTH & WEST)	€ DITCH (NORTH & WEST)		
CULVERT	CULVERT	LIGHT STANDARD	TREE	€ DITCH (SOUTH & EAST)	€ DITCH (SOUTH & EAST)	€ DITCH (SOUTH & EAST)		
ANODE	ANODE	TREE		GUTTER (NORTH & WEST)	GUTTER (NORTH & WEST)	GUTTER (NORTH & WEST)		
				GUTTER (SOUTH & EAST)	GUTTER (SOUTH & EAST)	GUTTER (SOUTH & EAST)		

NO.	REVISIONS	DATE	BY

CITY OF WINNIPEG
WATER AND WASTE
ENGINEERING DIVISION

DESIGNED BY: SGL
CHECKED BY: NC/SC

DRAWN BY: CJH
APPROVED BY: KZ

HOR. SCALE: 1:250
VERTICAL: 1:50

RELEASED FOR CONSTRUCTION

DATE: 2008 09 12

THE CITY OF WINNIPEG
WATER AND WASTE DEPARTMENT

2008 SEWER RENEWALS
CONTRACT 16
HARGRAVE STREET
3RD MH N OF HARGRAVE PLACE TO
MH AT HARGRAVE PLACE

ENGINEER'S SEAL
ORIGINAL SIGNED BY K.R. ZUREK
08/09/12

BID OPPORTUNITY: 699-2008
FILENAME: 8693.dwg
PLOT DATE: 2008 09 12

SHEET 4 OF 8
CITY DRAWING NUMBER
8694