

**WATER SERVICE INFORMATION**

ADDRESS	SIZE STREET	SIZE PROP	SHORT & LONG MEASUREMENT	CORP LOCATION	REMARKS
1192 WOLSELEY AVE	19	19	1.52 EWL HOUSE	0.31 E OF S/C	
RESIDENTIAL	COPPER	COPPER	2.13 WML BASSWOOD		
1188 WOLSELEY AVE	13	19	2.29 EWL HOUSE	OPP S/C	
RESIDENTIAL	LEAD	COPPER	5.47 WEL BASSWOOD		
1185 WOLSELEY AVE	19	13	4.27 SNL HOUSE	15.85>NNL WOLSELEY	SERVICED OFF BASSWOOD
RESIDENTIAL	COPPER	LEAD	15.85>NNL WOLSELEY		
1184 WOLSELEY AVE	13	19	4.27 EWL HOUSE	15.85 EEL BASSWOOD	
RESIDENTIAL	COPPER	COPPER	15.56 EEL BASSWOOD		
1183 WOLSELEY AVE	16	13	1.22 WML #181	0.46 W OF S/C	DBLE W/1181
RESIDENTIAL	LEAD	LEAD	21.80 EEL BASSWOOD		REVERSE TAP
1182 WOLSELEY AVE	19	13	0.91 EWL HOUSE	0.31 E S/C	RETRAPPED
RESIDENTIAL	COPPER	LEAD	35.15 EEL BASSWOOD		
1181 WOLSELEY AVE	19	13	1.07 WML HOUSE	0.61 W OF S/C	REVERSE TAP OCT 5/90.
RESIDENTIAL	COPPER	LEAD	21.95 EEL BASSWOOD		
1180 WOLSELEY AVE	19	19	2.59 EWL HOUSE	OPP S/C	
RESIDENTIAL	COPPER	COPPER	32.29 WML SPRAGUE		
1179 WOLSELEY AVE	13	13	1.83 EWL HOUSE	33.53 EEL BASSWOOD	
RESIDENTIAL	LEAD	LEAD	31.09 EEL BASSWOOD		
1175 WOLSELEY AVE	19	19	3.66 EWL OF HS	0.91 W OF S/C	REVERSE TAP
RESIDENTIAL	COPPER	COPPER	31.70 WML SPRAGUE		
1173 WOLSELEY AVE	13	13	6.25 WEL HOUSE	0.61 E S/C	
RESIDENTIAL	LEAD	LEAD	21.33 WML SPRAGUE		
1169 WOLSELEY AVE	19	13	5.79 SNL HOUSE	OPP S/C	SERVICED OFF SPRAGUE
RESIDENTIAL	COPPER	LEAD	14.55>NNL WOLSELEY		OLD SERV CUT AT CORP
1130 WOLSELEY AVE	19	13	1.07 EWL HOUSE	1.83 W S/C	
RESIDENTIAL	COPPER	LEAD	18.58 WML SPRAGUE		
1126 WOLSELEY AVE	13	19	OPP EL BASEMENT	0.91 E S/C	
RESIDENTIAL	LEAD	COPPER	3.71 EWL SPRAGUE		

NOTE:  
FOR CURBSTOPS AND SERVICES IN GIS:  
SHORT MEASUREMENTS WERE TAKEN FROM PANEL 10  
LONG MEASUREMENTS WERE MEASURED IN AUTOCAD

FOR CURBSTOPS AND SERVICES NOT IN GIS:  
INFORMATION IS FROM PANEL 10 (P10)

**SEWER SERVICE INFORMATION**

ADDRESS	SIZE	R DIST	REMARKS
1192 WOLSELEY AVE	-	1.61 EWL LOTLINE	
RESIDENTIAL	-	11.60 W MH AT BASSWOOD	
1188 WOLSELEY AVE	-	2.45 EWL LOTLINE	
RESIDENTIAL	-	78.94 W MH AT SPRAGUE (W PL)	
1185 WOLSELEY AVE	-	SERVICED OFF BASSWOOD	
RESIDENTIAL	-		
1184 WOLSELEY AVE	-	7.88 EWL LOTLINE	
RESIDENTIAL	-	55.17 W MH AT SPRAGUE (W PL)	
1183 WOLSELEY AVE	-	0.33 WW LOTLINE #1181	SHARED WITH 1181
RESIDENTIAL	-	53.95 W MH AT SPRAGUE (W PL)	
1182 WOLSELEY AVE	-	11.62 EWL LOTLINE	
RESIDENTIAL	-	47.55 W MH AT SPRAGUE (W PL)	
1181 WOLSELEY AVE	-	0.33 WW LOTLINE #1181	SHARED WITH 1181
RESIDENTIAL	-	53.95 W MH AT SPRAGUE (W PL)	
1180 WOLSELEY AVE	-	3.17 EWL LOTLINE	
RESIDENTIAL	-	31.70 W MH AT SPRAGUE (W PL)	
1179 WOLSELEY AVE	-	2.40 EWL LOTLINE	
RESIDENTIAL	-	45.72 W MH AT SPRAGUE (W PL)	
1175 WOLSELEY AVE	-	4.05 EWL LOTLINE	
RESIDENTIAL	-	29.57 W MH AT SPRAGUE (W PL)	
1173 WOLSELEY AVE	-	2.46 EWL LOTLINE	
RESIDENTIAL	-	17.98 W MH AT SPRAGUE (W PL)	
1169 WOLSELEY AVE	-	SERVICED OFF SPRAGUE	
RESIDENTIAL	-		
1130 WOLSELEY AVE	-	4.72 EWL LOTLINE	
RESIDENTIAL	-	8.84 W MH AT SPRAGUE (W PL)	
1126 WOLSELEY AVE	-	1.47 EWL LOTLINE	
RESIDENTIAL	-	14.07 E MH AT SPRAGUE (W PL)	

NOTE:  
MOST OF THE SEWER SERVICES EXIST IN GIS. SO  
PL AND JUNCTION MEASUREMENTS WERE MEASURED  
IN THE AUTOCAD DRAWING.  
HOUSEFILES WAS NOT CHECKED FOR ANY OF THE BLANK FIELDS

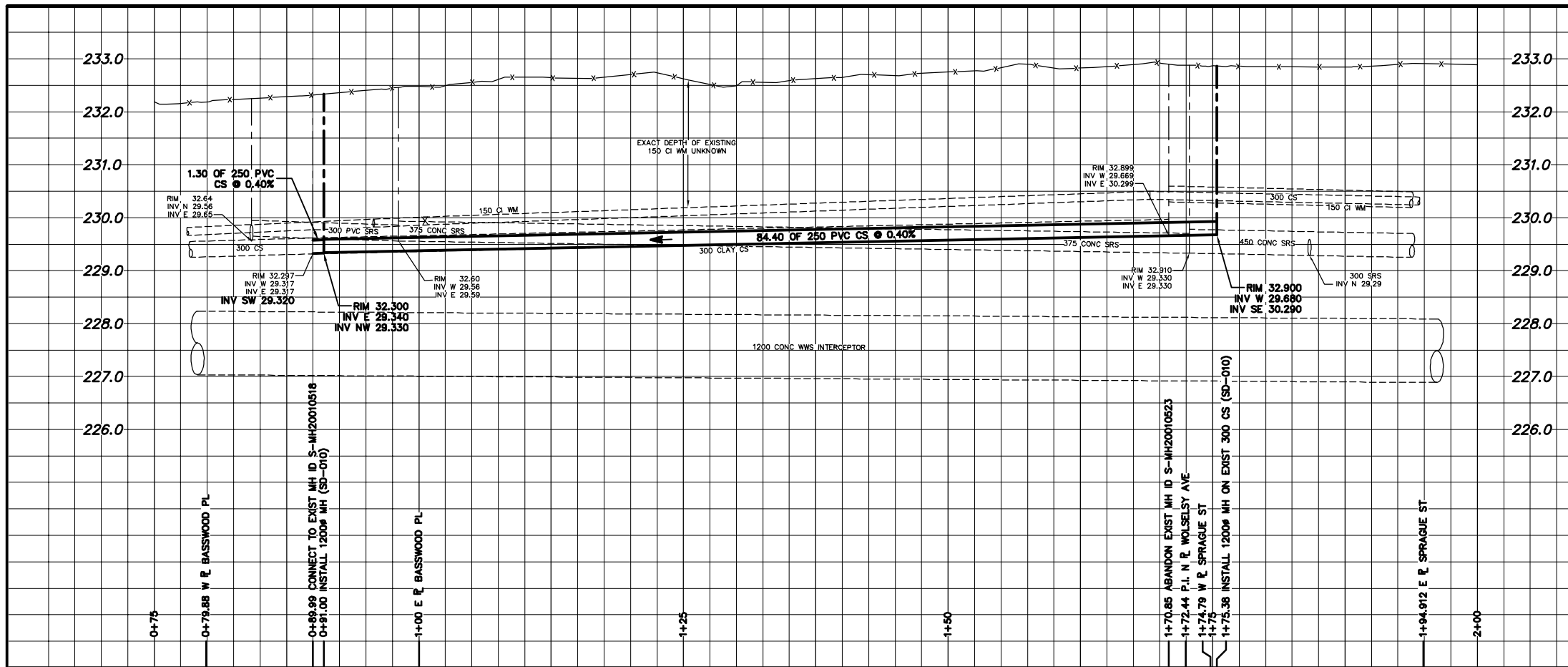
**SEWER JUNCTION INFORMATION  
FROM SEWER VIDEO INSPECTION  
S-MA20011543**

DISTANCE FROM MH S-MH20010523		
0.5 W	150#	NORTH JN
1.8 W	150#	NORTH CNI
26.5 W	150#	NORTH JX
26.8 W	150#	SOUTH JX
33.0 W	150#	NORTH JN
35.1 W	150#	SOUTH JX
39.3 W	200#	SOUTH JN
40.1 W	150#	NORTH JX
49.4 W	150#	NORTH JX
50.2 W	150#	SOUTH JN
51.3 W	150#	SOUTH JX
64.4 W	150#	NORTH JN
72.3 W	150#	NORTH JN

**METRIC**  
WHOLE NUMBERS INDICATE MILLIMETRES  
DECIMALIZED NUMBERS INDICATE METRES

**WARNING**

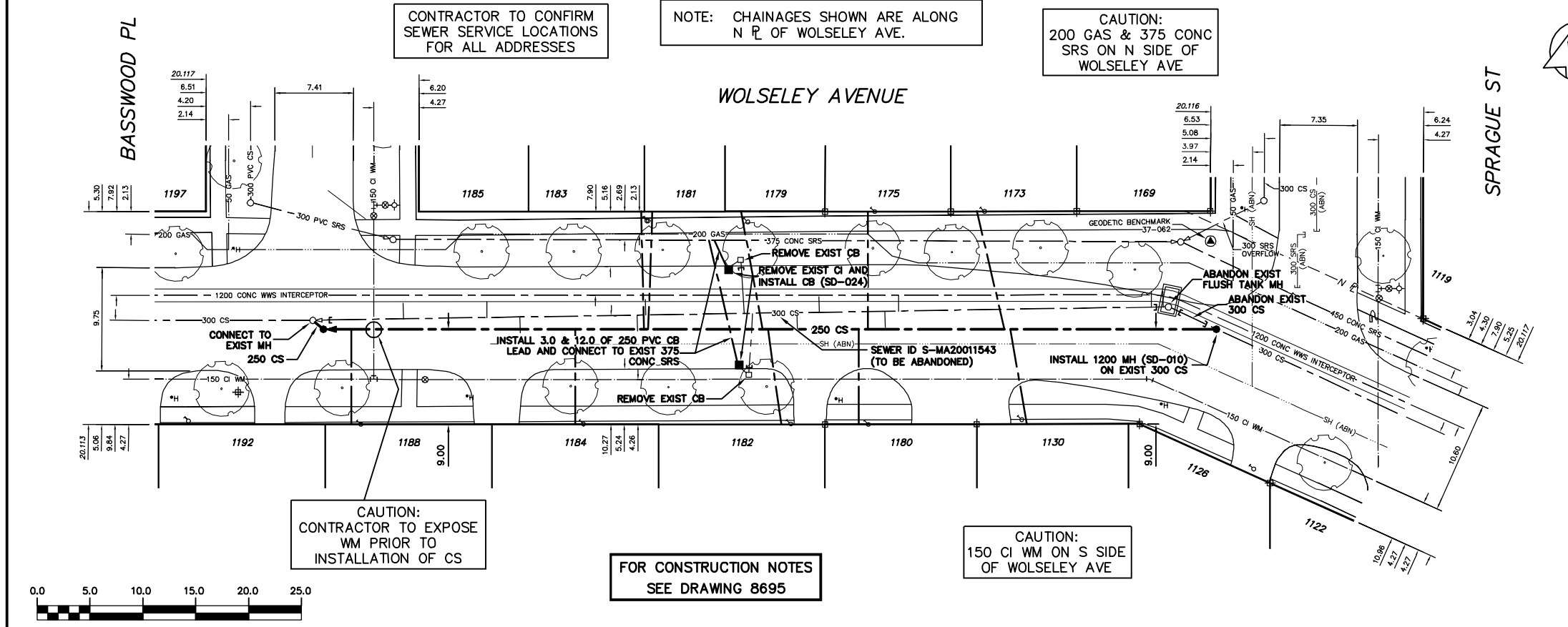
IF POWER EQUIPMENT OR EXPLOSIVES ARE TO BE USED FOR EXCAVATION ON THIS PROJECT THE CONTRACTOR MUST:  
1) NOTIFY THE GAS COMPANY OF THE PROPOSED LOCATION OF EXCAVATION.  
2) TAKE PRECAUTION TO AVOID DAMAGE TO GAS COMPANY INSTALLATIONS.  
SEE PROVINCIAL REGULATION 210/72 FOR DETAILS



CONTRACTOR TO CONFIRM SEWER SERVICE LOCATIONS FOR ALL ADDRESSES

NOTE: CHAINAGES SHOWN ARE ALONG N PL OF WOLSELEY AVE.

CAUTION: 200 GAS & 375 CONC SRS ON N SIDE OF WOLSELEY AVE



CAUTION: CONTRACTOR TO EXPOSE WM PRIOR TO INSTALLATION OF CS

FOR CONSTRUCTION NOTES SEE DRAWING 8695

CAUTION: 150 CI WM ON S SIDE OF WOLSELEY AVE

200 WM	WATERMAIN	200 WM	SL, HYDRO	150 WM	WATERMAIN	150 WM
⊕	HYDRANT	⊕	MTS	+	HYDRANT	+
⊙	VALVE	⊙	TRAFFIC SIGNALS	⊕	VALVE	⊕
525 LDS	LAND DRAINAGE SEWER	525 LDS	GAS	50 GAS	300 LDS	LAND DRAINAGE SEWER
375 WWS	WASTEWATER SEWER	375 WWS	SURVEY BAR	250 WWS	250 WWS	WASTEWATER SEWER
○	MANHOLE	●	FENCE	⊕	⊕	PROFILE
□	CATCH BASIN	■	POLE - HYDRO, MTS	=====	=====	GROUND ABOVE PIPE
▽	CURB INLET	▽	CURB STOP	⊕	⊕	⊕ DITCH (NORTH & WEST)
⊕	JUNCTIONS	⊕	GUY ANCHOR	⊕	⊕	⊕ DITCH (SOUTH & EAST)
⊕	CULVERT	⊕	LIGHT STANDARD	⊕	⊕	⊕ GUTTER (NORTH & WEST)
⊕	ANODE	⊕	TREE	⊕	⊕	⊕ GUTTER (SOUTH & EAST)
---	EXISTING	---	LEGEND-PLAN	---	---	LEGEND-PROFILE
---	PROPOSED	---	PROPOSED	---	---	PROPOSED

LOCATION APPROVED	B.M. ELEV.	FIELD BOOK #:
UNDERGROUND STRUCTURES		
SUPV. U/G STRUCTURES COMMITTEE		
DATE		
NOTE:		
LOCATION OF UNDERGROUND STRUCTURES AS SHOWN ARE BASED ON THE BEST INFORMATION AVAILABLE BUT NO GUARANTEE IS GIVEN THAT ALL EXISTING UTILITIES ARE SHOWN OR THAT THE GIVEN LOCATIONS ARE EXACT. CONFIRMATION OF EXISTENCE AND EXACT LOCATION OF ALL SERVICES MUST BE OBTAINED FROM THE INDIVIDUAL UTILITIES BEFORE PROCEEDING WITH CONSTRUCTION.		
NO. REVISIONS	DATE	BY

**CITY OF WINNIPEG  
WATER AND WASTE  
ENGINEERING DIVISION**

DESIGNED BY: SGL  
CHECKED BY: NC/SC

DRAWN BY: CJH  
APPROVED BY: KZ

HOR. SCALE: 1:250  
VERTICAL: 1:50

RELEASED FOR CONSTRUCTION

DATE: 2008 09 12

ENGINEER'S SEAL

ORIGINAL SIGNED BY: KURE ZUREK  
08/09/12

BID OPPORTUNITY: 699-2008  
FILENAME: 8698.dwg  
PLOT DATE: 2008 09 12

**THE CITY OF WINNIPEG  
WATER AND WASTE DEPARTMENT**

2008 SEWER RENEWALS AND REPAIRS  
CONTRACT 16  
**WOLSELEY AVENUE**  
MH AT BASSWOOD PLACE TO  
MH AT SPRAGUE STREET

SHEET 8 OF 8  
CITY DRAWING NUMBER  
**8698**