

1 BRIDGE - SCOPE OF WORK  
1 : 1000

SCOPE OF WORK - WESTBOUND STRUCTURE		
ITEM	DESCRIPTION	SHEET No.
1	STRENGTHEN EXISTING STEEL BOX GIRDERS	21, 22, 23, 24
2	INSTALL STIFFENERS TO THE ABUTMENT DIAPHRAGMS	20
3	REMOVE AND SALVAGE EXISTING STREET LIGHTS (3 LOCATIONS) - COORDINATE WITH MANITOBA HYDRO	5
4	REMOVE EXISTING ALUMINUM TRAFFIC RAILS AND POSTS; SALVAGE ALUMINUM TRAFFIC RAILS	5
5	REMOVE EXISTING ASPHALT WEARING SURFACE, WATERPROOFING MEMBRANE AND PORTION OF EXISTING CONCRETE DECK	6
6	REMOVE EXISTING CONCRETE BARRIERS ON BRIDGE DECK AND ABUTMENT WINGWALLS	5, 8, 14
7	ABUTMENT DEMOLITION	8, 14
8	SAWCUT AND REMOVE EXISTING BRIDGE DECK OVERHANG	5, 25
9	REMOVE EXISTING DECK DRAINS; PATCH CONCRETE DECK AND GIRDER WEB	25
10	REMOVE EXISTING EXPANSION JOINTS	26
11	REMOVE EXISTING APPROACH SLABS	8, 14
12	CONSTRUCT NEW WINGWALLS AND WIDEN ABUTMENT ROOF SLABS	9, 10, 11, 15, 16, 17
13	CONSTRUCT REINFORCED CONCRETE DECK OVERHANG	25
14	CONSTRUCT NEW APPROACH SLABS	37, 38
15	CONSTRUCT NEW EAST ROADWAY EXPANSION SLAB	37, 38

SCOPE OF WORK - WESTBOUND STRUCTURE		
ITEM	DESCRIPTION	SHEET No.
16	CONSTRUCT NEW CONCRETE DECK AND CONCRETE BARRIERS	31, 32, 33, 34
17	INSTALL NEW EXPANSION JOINTS	35, 36
18	CONSTRUCT NEW CONCRETE OVERLAY	5, 25, 26
19	CONSTRUCT ASPHALT OVERLAY AND WATERPROOFING MEMBRANE ON WEST APPROACH SLAB & WEST ABUTMENT ROOF SLAB	10, 37
20	INSTALL NEW ALUMINUM POSTS AND REFURBISHED ALUMINUM TRAFFIC RAILS	5, 31, 32, 34
21	INSTALL NEW STREET LIGHTS (SIX LOCATIONS) - COORDINATE WITH MANITOBA HYDRO	5, 25, 32, 43
22	REPAIR DESIGNATED AREAS OF EXISTING CONCRETE SLOPE PAVING	39
23	PAINT EXTERIOR GIRDER SURFACES OF SPANS 1 & 5 (BOTH GIRDERS)	SEE SPECIFICATIONS
24	REPAIR MISCELLANEOUS AREAS OF ABUTMENT CONCRETE	SEE SPECIFICATIONS
25	INSTALL ELECTRICAL CONDUITS AND UNDERBRIDGE LIGHTING ON EACH END OF THE BRIDGE	43

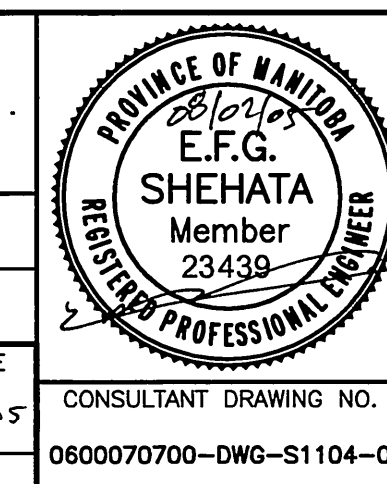


B.M. ELEV.	F.B.		
00	ISSUED FOR TENDER	08.02.05	ETS
NO.	REVISIONS	DATE	BY

**WARDROP** Engineering Inc.

DESIGNED BY: E.F.S.	CHECKED BY:
DRAWN BY: G.I.	APPROVED BY:
HOR. SCALE: AS NOTED	ACCEPTED BY: [Signature] DATE: 08-02-05
VERTICAL:	DATE: 08.02.05

RANDY FINGAS, P. ENG. BRIDGE PROJECTS ENGINEER



**THE CITY OF WINNIPEG**  
PUBLIC WORKS DEPARTMENT  
TRANSPORTATION ENGINEERING DIVISION

**FORT GARRY TWIN BRIDGES**  
WESTBOUND STRUCTURE REHABILITATION  
AND ASSOCIATED ROADWORKS

BRIDGE - SCOPE OF WORK

CITY DRAWING NUMBER: B173-08-004W  
SHEET 4 OF 54

CONSULTANT DRAWING NO.: 0600070700-DWG-S1104-00

4