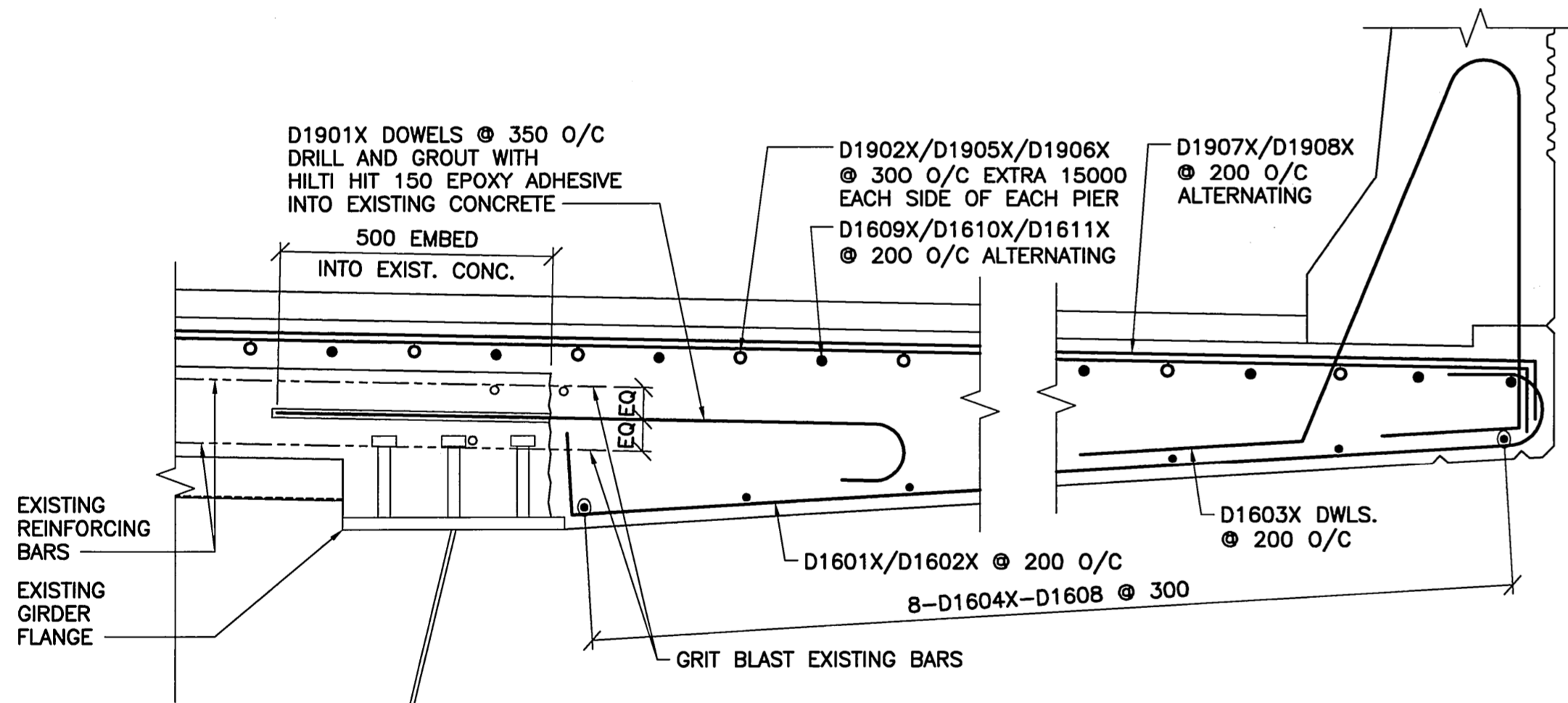


1
DECK REINFORCING CROSS SECTION
1 : 20

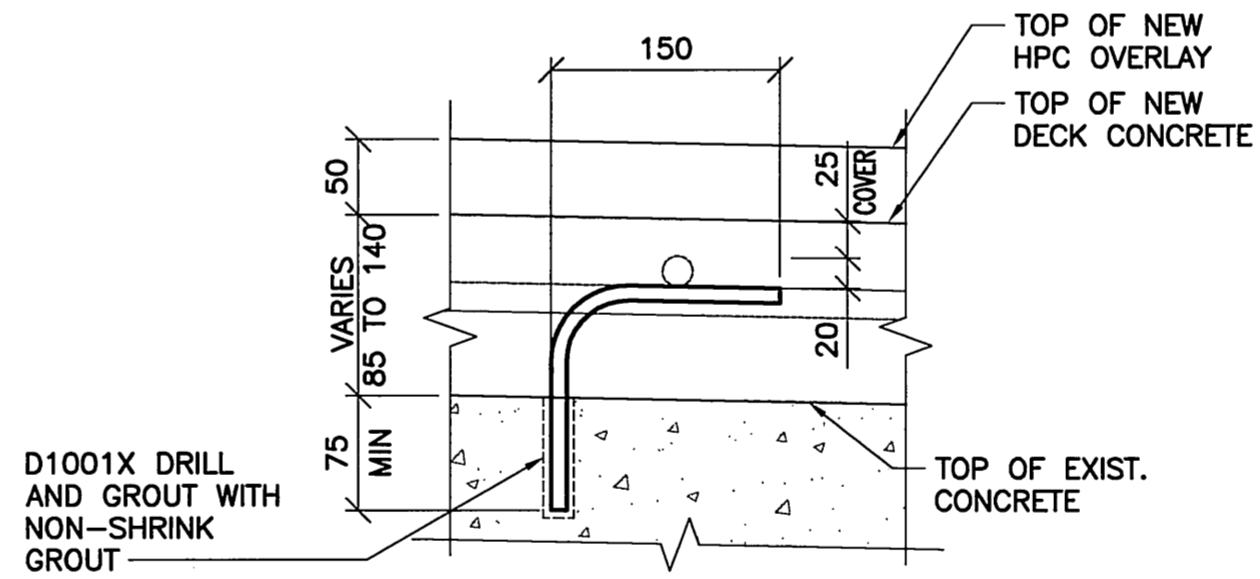
NOTE
INFORMATION ABOUT EXISTING DECK REINFORCING WAS TAKEN FROM "AS-BUILT" DRAWINGS DATED NOV. 6/79. BAR SIZES ARE IMPERIAL DESIGNATION AS FOLLOWS:
#6 - 3/4" (19.0mm) DIA. - AREA = 284mm²
#5 - 5/8" (15.9mm) DIA. - AREA = 200mm²

D1901X DWLS. @ 350±
DRILL & EPOXY GROUT 500
INTO EXISTING CONCRETE
- MATCH EXIST. REINF. BARS
TO AVOID NELSON STUDS ON
THE GIRDER

D1901X DWLS. @ 350±
DRILL & EPOXY GROUT 500
INTO EXISTING CONCRETE
- MATCH EXIST. REINF. BARS
TO AVOID NELSON STUDS ON
THE GIRDER



2
DECK REINFORCING CANTILEVER DETAIL
1 : 10



3
TYPICAL CHAIR DETAIL
1 : 5
- CHAIRS ARE PLACED TO ENSURE A COVER OF 25mm TO THE TOP OF NEW DECK CONCRETE FOR THE UPPERMOST BARS



B.M. ELEV.	F.B.	WARDROP Engineering Inc.			 THE CITY OF WINNIPEG PUBLIC WORKS DEPARTMENT TRANSPORTATION ENGINEERING DIVISION	CITY DRAWING NUMBER B173-08-029W SHEET 29 OF 54												
		DESIGNED BY: E.F.S.	CHECKED BY:				CONSULTANT DRAWING NO. 0600070700-DWG-S1129											
		DRAWN BY: P.S.	APPROVED BY:	DATE 08-02-05	FORT GARRY TWIN BRIDGES WESTBOUND STRUCTURE REHABILITATION AND ASSOCIATED ROADWORKS	BRIDGE DECK - REINFORCING DETAILS 3												
		HOR. SCALE: AS NOTED	ACCEPTED BY:					NO. REVISIONS	DATE	BY	DATE	08.02.05	DATE	08.02.05	DATE	08.02.05	DATE	08.02.05
		VERTICAL:	DATE	08.02.05														