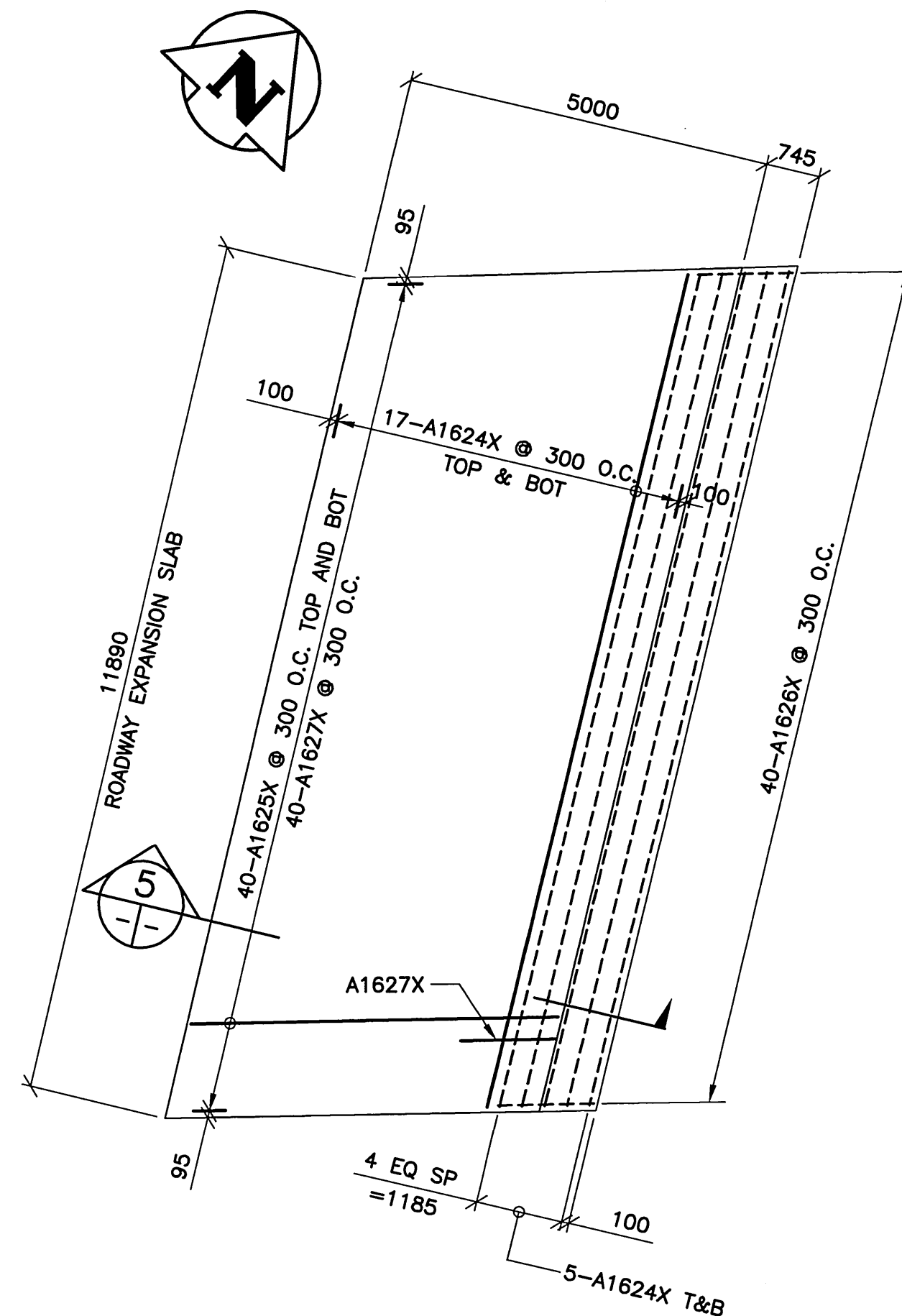
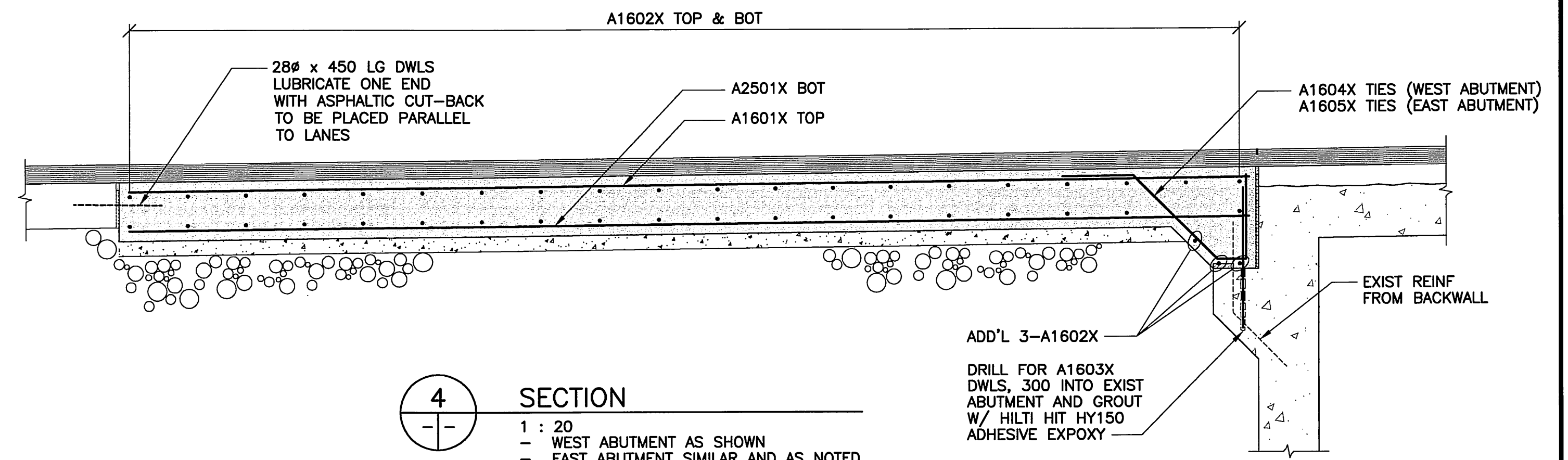


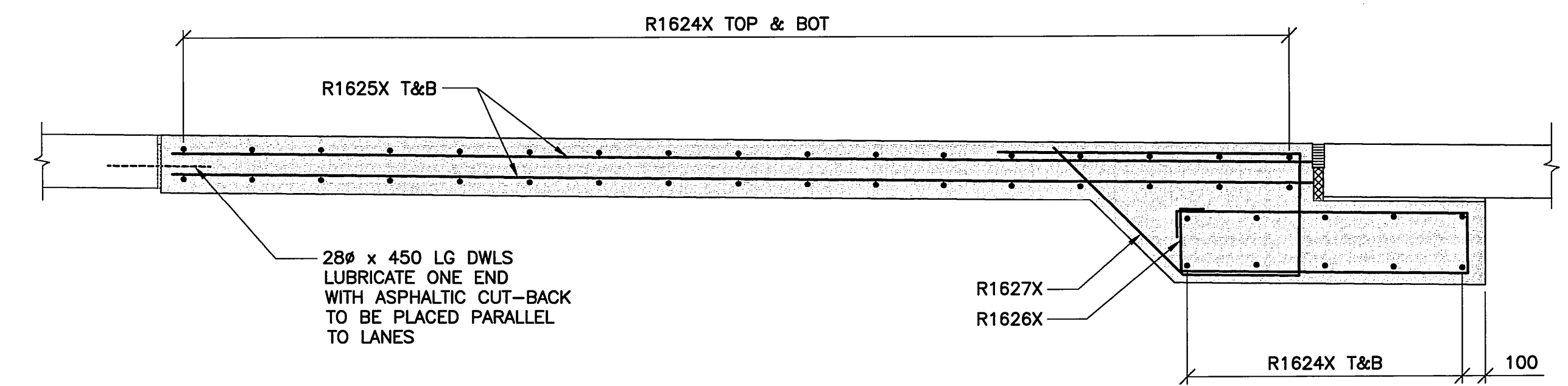
1 WEST APPROACH SLAB
 1 : 75
 - NEW EAST APPROACH SLAB SIMILAR EXCEPT AS NOTED



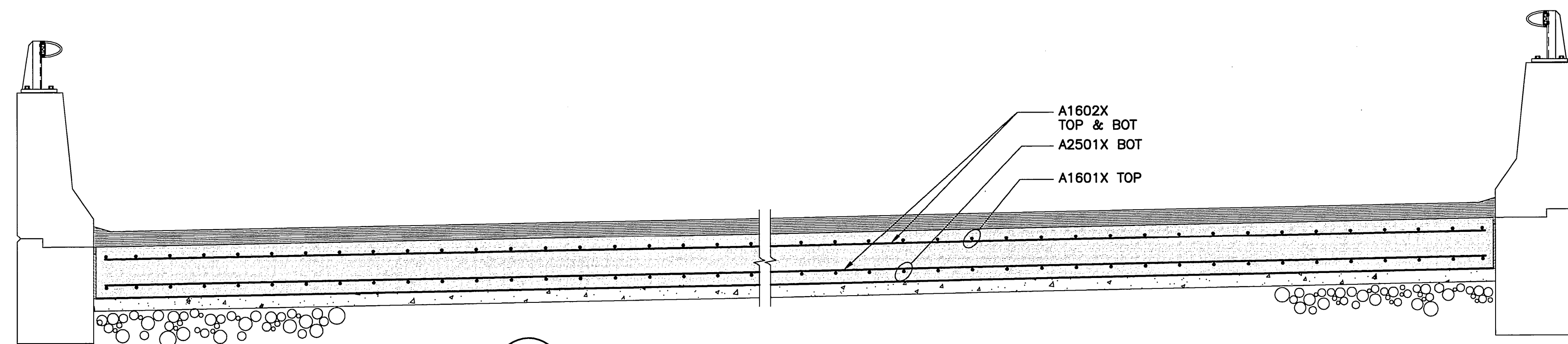
2 ROADWAY EXPANSION SLAB
 1 : 75



4 SECTION
 1 : 20
 - WEST ABUTMENT AS SHOWN
 - EAST ABUTMENT SIMILAR AND AS NOTED



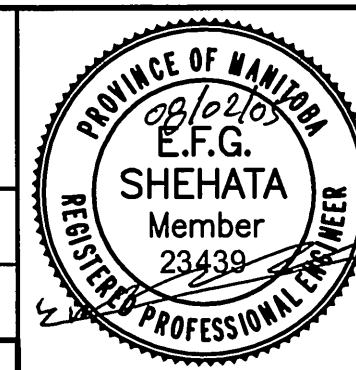
5 SECTION - ROADWAY EXPANSION SLAB
 1 : 20



3 SECTION
 1 : 20
 - WEST APPROACH SLAB AS SHOWN
 - EAST APPROACH SLAB SIMILAR



B.M. ELEV.	F.B.	WARDROP Engineering Inc.	
		DESIGNED BY E.F.S.	CHECKED BY
		DRAWN BY G.I.	APPROVED BY
		HOR. SCALE: AS NOTED	ACCEPTED BY DATE 08-02-05
00	ISSUED FOR TENDER 08.02.05	VERTICAL:	SANDY FRIGAS, P. ENG. BRIDGES PROJECTS ENGINEER
NO.	REVISIONS	DATE	BY



THE CITY OF WINNIPEG
 PUBLIC WORKS DEPARTMENT
 TRANSPORTATION ENGINEERING DIVISION

Winnipeg

FORT GARRY TWIN BRIDGES
 WESTBOUND STRUCTURE REHABILITATION
 AND ASSOCIATED ROADWORKS

EAST AND WEST APPROACH SLABS
 REINFORCING DETAILS

CITY DRAWING NUMBER
B173-08-038W
 SHEET 38 OF 54

CONSULTANT DRAWING NO.
 0600070700-DWG-S1138-00

38