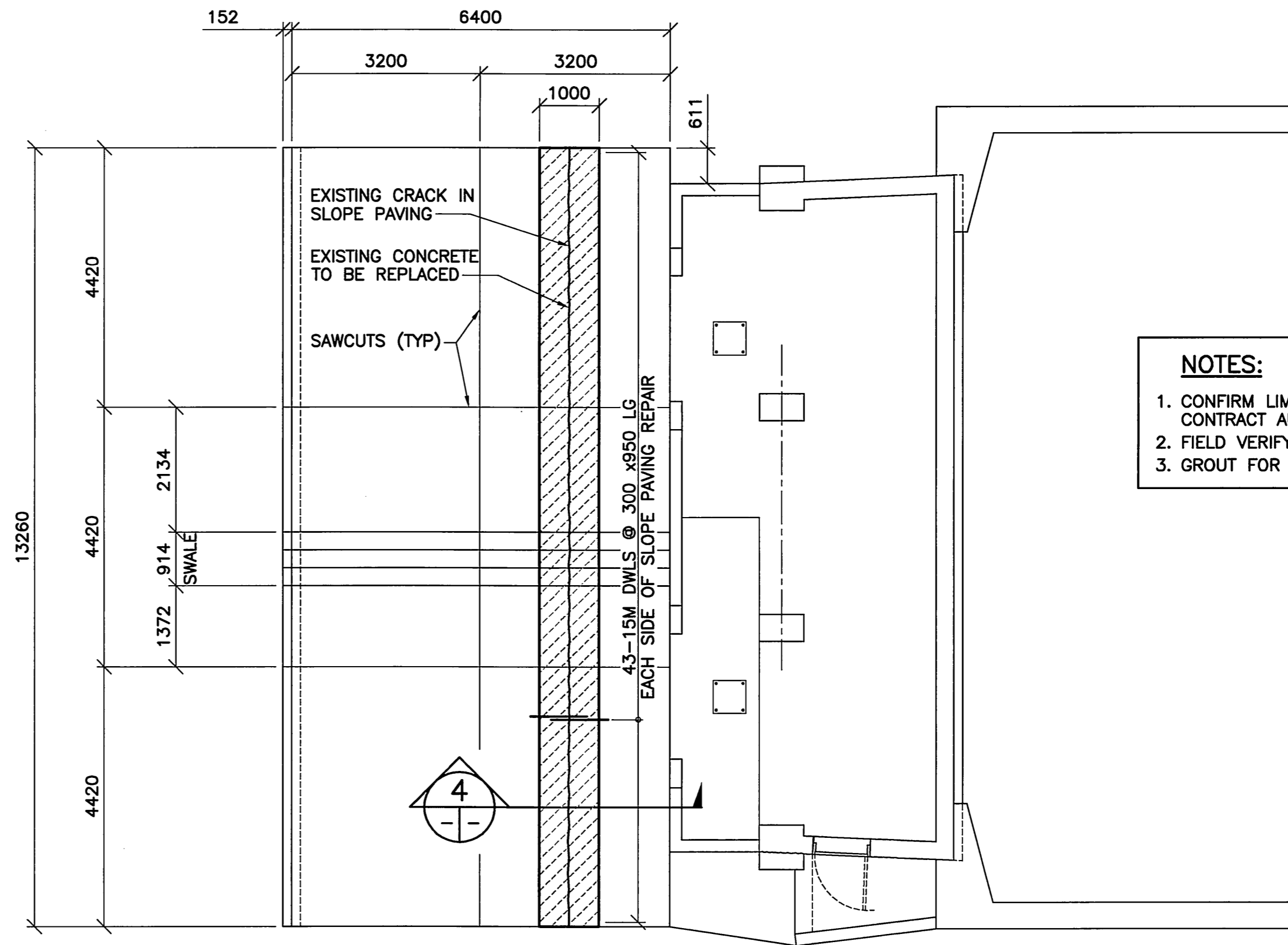
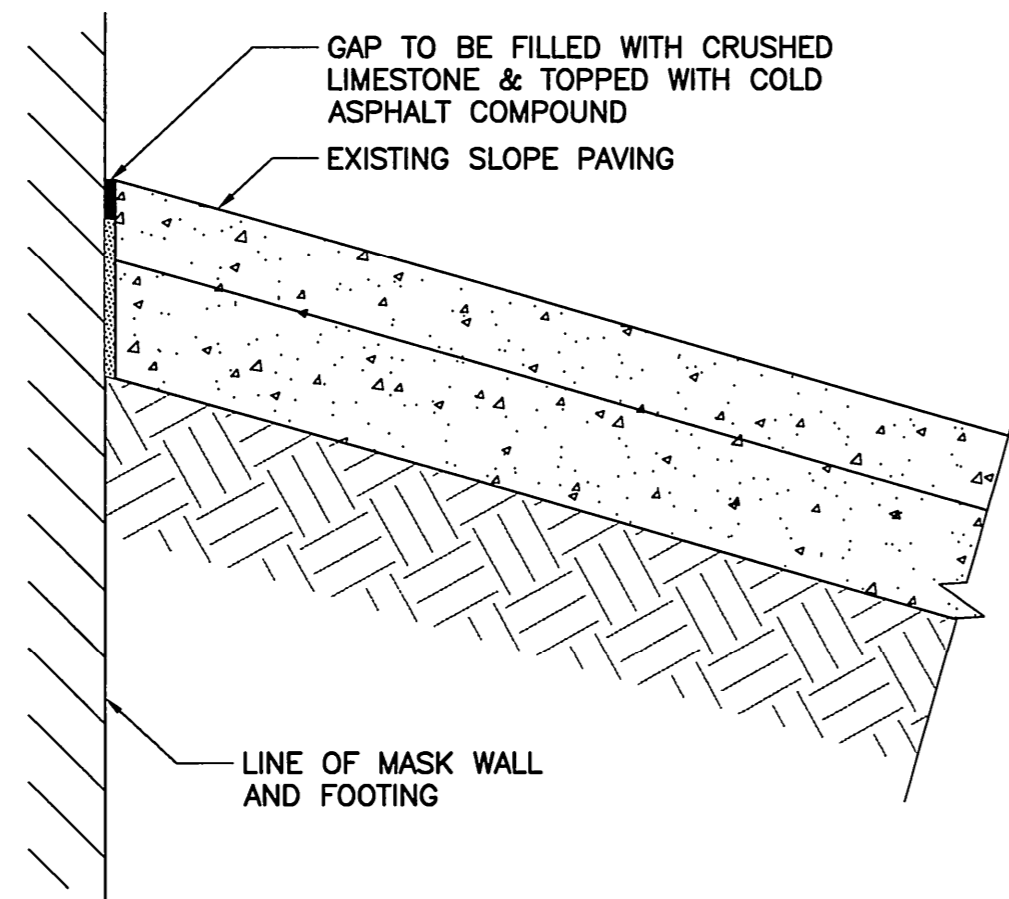


1 PLAN AT WEST ABUTMENT
1 : 75

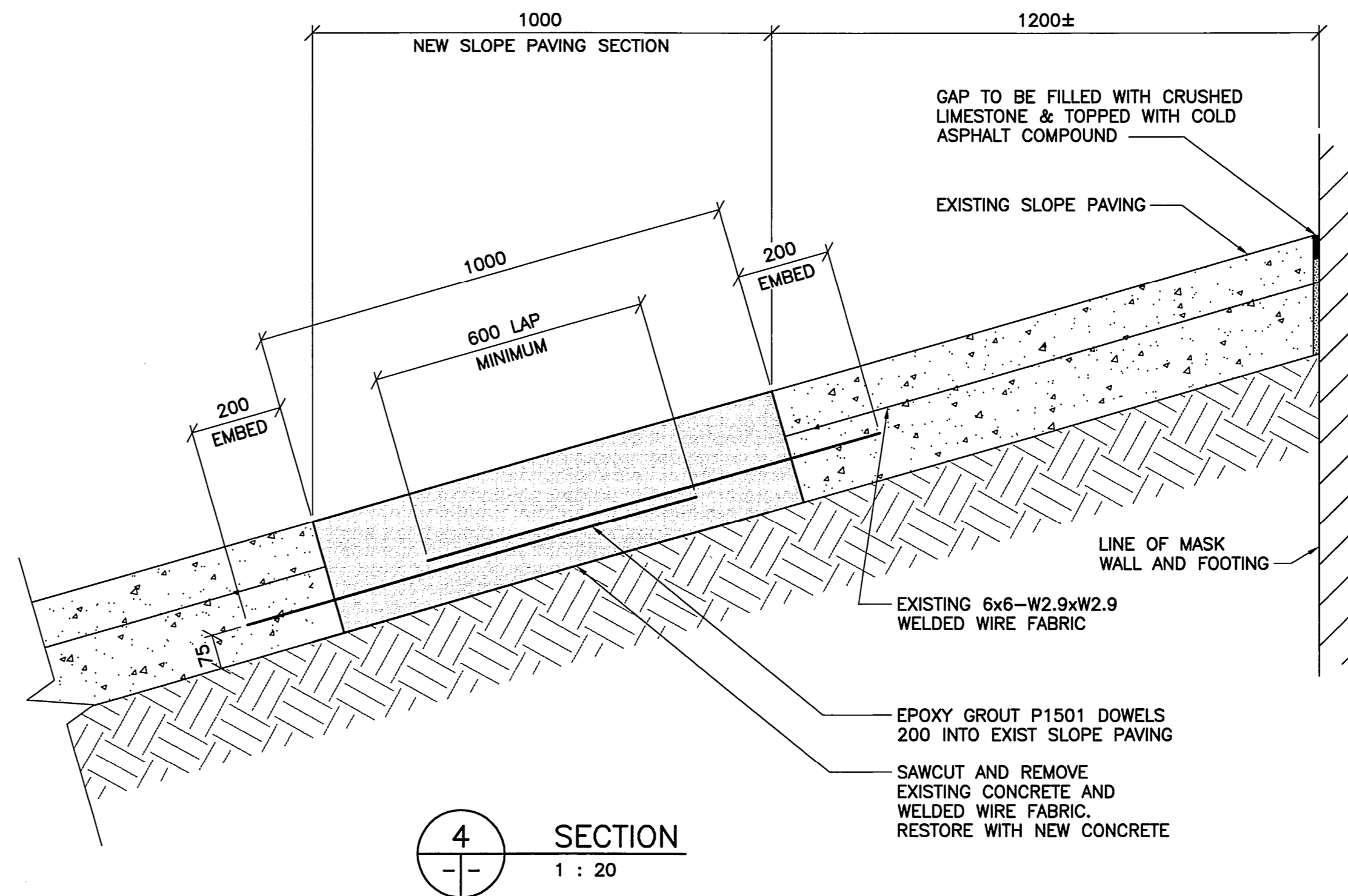


2 PLAN AT EAST ABUTMENT
1 : 75

- NOTES:**
1. CONFIRM LIMITS OF SLOPE PAVING WITH CONTRACT ADMINISTRATOR PRIOR TO CONSTRUCTION.
 2. FIELD VERIFY CRACK LOCATIONS.
 3. GROUT FOR DOWELS TO BE HILTI HIT HY150.



3 SECTION
1 : 10

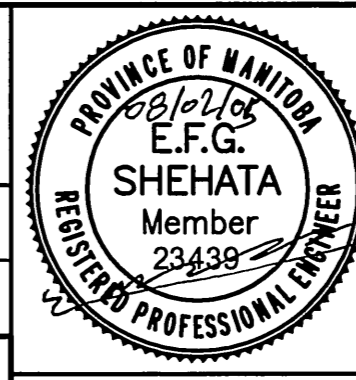


4 SECTION
1 : 20



B.M. ELEV.	F.B.

WARDROP Engineering Inc.	
DESIGNED BY E.F.S.	CHECKED BY
DRAWN BY P.S.	APPROVED BY
HOR. SCALE: AS NOTED	ACCEPTED BY DATE
VERTICAL:	
00 ISSUED FOR TENDER 08.02.05	08.02.05
NO. REVISIONS	DATE BY



THE CITY OF WINNIPEG
PUBLIC WORKS DEPARTMENT
TRANSPORTATION ENGINEERING DIVISION

Winnipeg

FORT GARRY TWIN BRIDGES
WESTBOUND STRUCTURE REHABILITATION
AND ASSOCIATED ROADWORKS

CITY DRAWING NUMBER
B173-08-039W
SHEET **39** OF **54**

SLOPE PAVING MODIFICATIONS
PLANS AND SECTIONS

CONSULTANT DRAWING NO. 0600070700-DWG-S1139-00

39