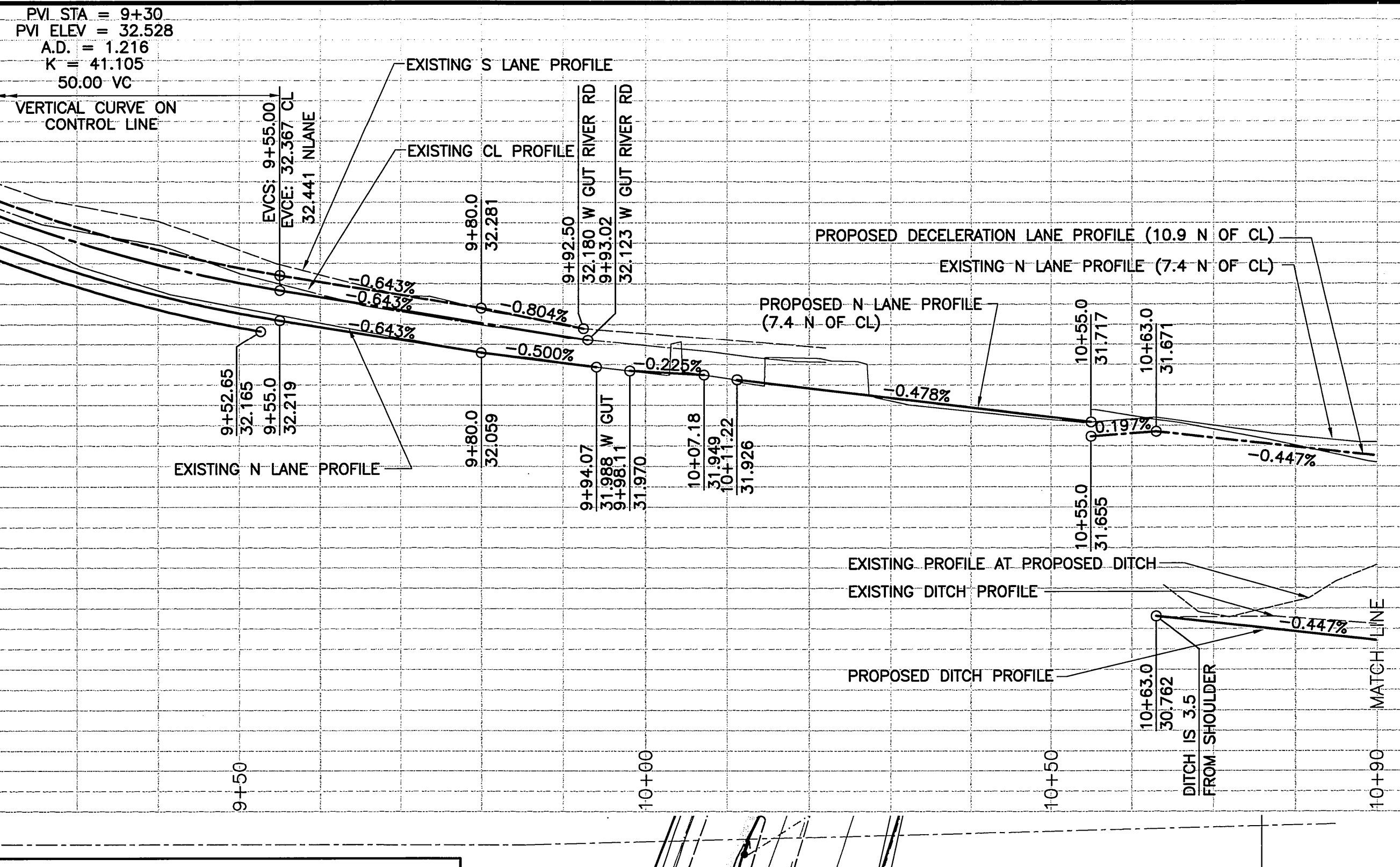
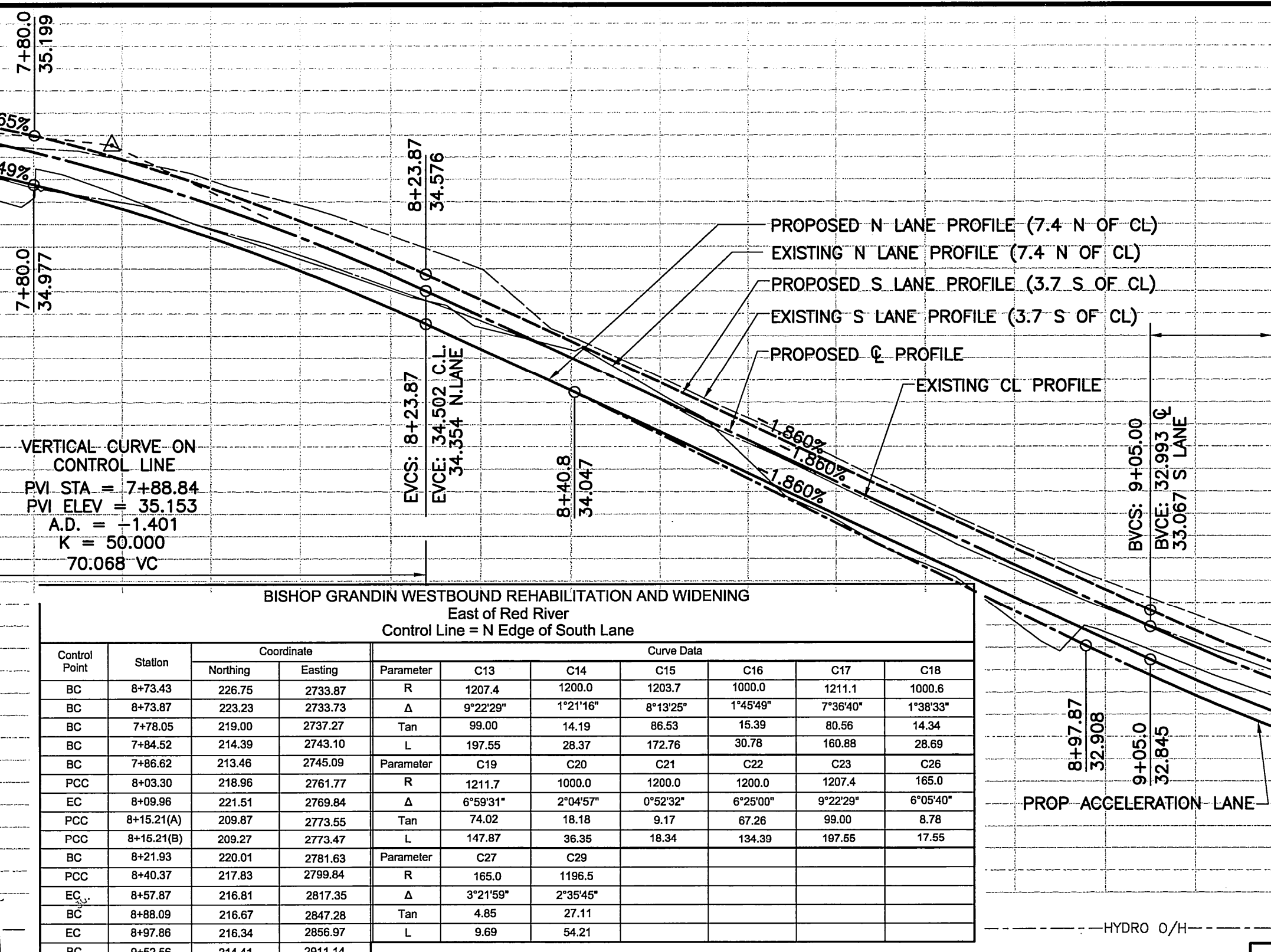


235.2  
234.8  
234.4  
234.0  
233.6  
233.2  
232.8  
232.4

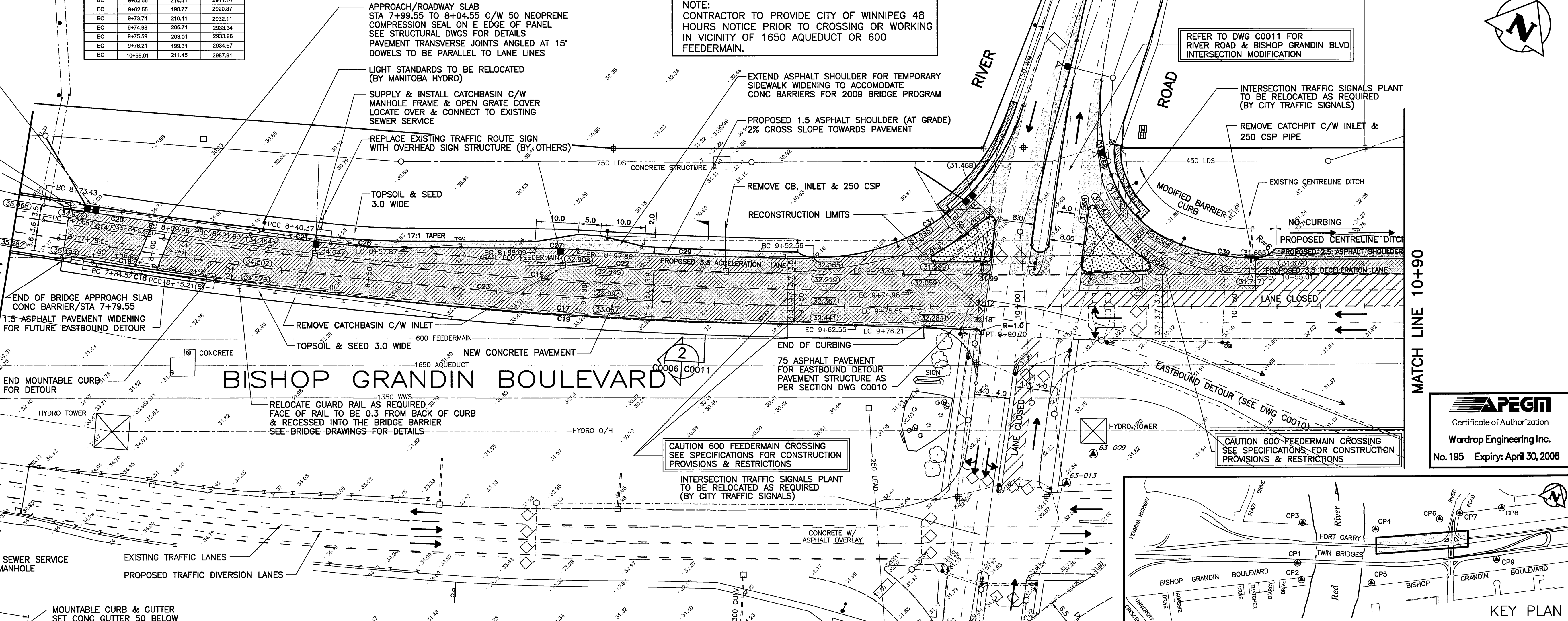
232.8  
232.4  
232.0  
231.6  
231.2  
230.8  
230.4



**BISHOP GRANDIN WESTBOUND REHABILITATION AND WIDENING**  
East of Red River  
Control Line = N Edge of South Lane

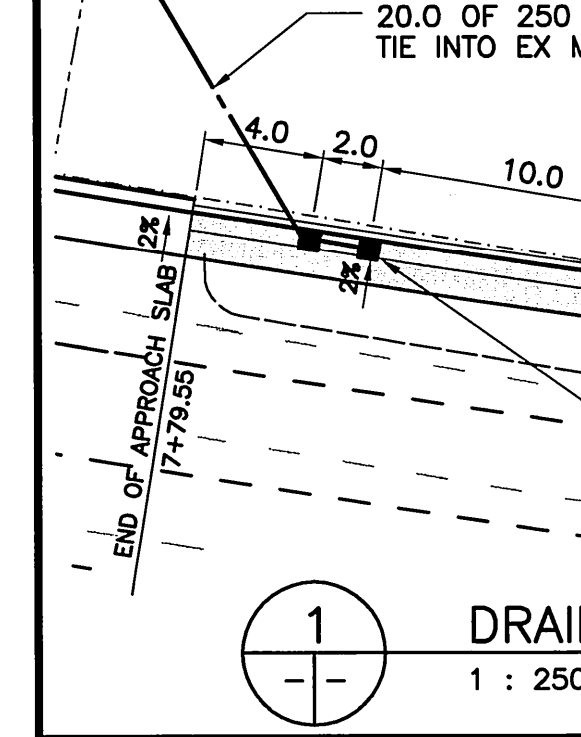
Control Point	Station	Coordinate		Parameter	Curve Data										
		Northing	Easting		C13	C14	C15	C16	C17	C18					
BC	8+73.43	228.75	2733.87	R	1207.4	1200.0	1203.7	1000.0	1211.1	1000.8					
BC	8+73.87	223.23	2733.73	Δ	9°22'22"	1°21'16"	8°13'25"	1°45'49"	7°36'40"	1°38'33"					
BC	7+78.05	215.00	2737.27	Tan	99.00	14.19	86.53	15.39	80.55	14.34					
BC	7+84.52	214.39	2743.10	L	197.55	28.37	172.76	30.78	160.88	28.69					
BC	7+86.62	213.46	2745.09	Parameter	C19	C20	C21	C22	C23	C26					
PCC	8+03.30	218.96	2761.77	R	1211.7	1000.0	1200.0	1200.0	1207.4	165.0					
EC	8+09.98	221.51	2769.84	Δ	6°59'31"	2°04'57"	0°52'32"	6°29'00"	9°22'29"	6°05'40"					
PCC	8+15.21(A)	209.87	2773.55	Tan	74.02	18.18	9.17	67.26	99.00	8.78					
PCC	8+16.21(B)	209.27	2773.47	L	147.87	36.36	18.34	134.39	197.55	17.55					
BC	8+21.93	220.01	2781.63	Parameter	C27	C29									
PCC	8+40.37	217.83	2799.84	R	165.0	1196.5									
EC	8+57.87	246.81	2817.35	Δ	3°21'59"	2°58'45"									
BC	8+68.09	216.67	2847.28	Tan	4.85	27.11									
EC	8+97.88	216.34	2856.97	L	9.88	54.21									
BC	9+52.56	214.41	2911.14												
EC	9+62.55	198.77	2920.87												
EC	9+73.74	210.41	2932.11												
EC	9+74.98	206.71	2933.34												
EC	9+75.59	203.01	2933.96												
EC	9+76.21	199.31	2934.57												
EC	10+55.01	211.45	2987.91												

SEE DRAIN DETAIL  
RELOCATE GUARD RAIL  
FACE OF RAIL TO BE 0.3 FROM  
ASPHALT SHOULDER & RECESSED  
INTO BRIDGE BARRIER (SEE  
BRIDGE DWGS FOR DETAILS)  
REMOVE CATCHBASIN C/W INLET  
ABANDON SEWER SERVICE PIPE  
BRIDGE EXPANSION JOINT



END OF BRIDGE APPROACH SLAB  
CONC BARRIER/STA 7+79.55  
1.5-ASPHALT PAVEMENT WIDENING  
FOR FUTURE EASTBOUND DETOUR

END MOUNTABLE CURB  
FOR DETOUR  
HYDRO TOWER  
RELOCATE GUARD RAIL AS REQUIRED  
FACE OF RAIL TO BE 0.3 FROM BACK OF CURB  
& RECESSED INTO THE BRIDGE BARRIER  
SEE BRIDGE DRAWINGS FOR DETAILS



20.0 OF 250 SEWER SERVICE  
TIE INTO EX MANHOLE  
MOUNTABLE CURB & GUTTER  
SET CONC GUTTER 50 BELOW  
ASPHALT SHOULDER  
TAPER LAST METRE OF CURB  
AT E END  
SUPPLY & INSTALL CATCHBASIN &  
CATCH PIT C/W MOUNTABLE CURB &  
GUTTER INLET FRAME & COVER  
2.0 OF 250 CONNECTION PIPE

# BISHOP GRANDIN BOULEVARD

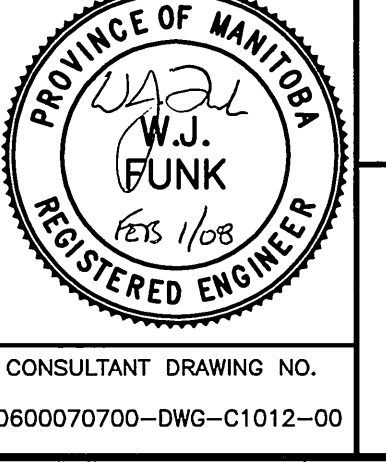
**Coordinate Control Survey Monuments**

No.	Wardrop Coordinate		NAD 83 Grid Coordinate		Description
	Northing	Easting	Northing	Easting	
CP1	200.457	2451.508	5520387.945	633474.139	GBM 76-026
CP2	143.191	2457.394	5520340.999	633507.459	BRASS CAP
CP3	324.616	2489.426	5520514.681	633446.010	BRASS CAP
CP6	289.245	2935.557	5520703.561	633851.730	BRASS CAP
CP7	300.000	3000.000	5520744.652	633902.526	IRON BAR
CP9	132.015	3114.711	5520654.917	634085.078	HCM

B.M. ELEV.	F.B.

ISSUED FOR TENDER 08.02.04  
NO. REVISIONS DATE BY

**WARDROP Engineering Inc.**  
DESIGNED BY DAL CHECKED BY  
DRAWN BY GMD APPROVED BY  
HOR. SCALE: 1 : 500  
VERTICAL: 1 : 20  
ACCEPTED BY DATE  
RANDY FINIGAN, P. ENG.  
BRIDGE PROJECT ENGINEER



**THE CITY OF WINNIPEG**  
PUBLIC WORKS DEPARTMENT  
TRANSPORTATION ENGINEERING DIVISION  
FORT GARRY BRIDGE REHABILITATION  
PAVEMENT RECONSTRUCTION & WIDENING  
BISHOP GRANDIN BOULEVARD WESTBOUND LANES  
FROM RED RIVER TO 80m EAST OF RIVER RD.  
CITY DRAWING NUMBER  
B173-08-049W  
SHEET OF 49 54  
C0006

REFER TO DWG C0011 FOR  
RIVER ROAD & BISHOP GRANDIN BLVD  
INTERSECTION MODIFICATION

NOTE:  
CONTRACTOR TO PROVIDE CITY OF WINNIPEG 48  
HOURS NOTICE PRIOR TO CROSSING OR WORKING  
IN VICINITY OF 1650 AQUEDUCT OR 600  
FEEDERMAIN.

INTERSECTION TRAFFIC SIGNALS PLANT  
TO BE RELOCATED AS REQUIRED  
(BY CITY TRAFFIC SIGNALS)  
REMOVE CATCHPIT C/W INLET &  
250 CSP PIPE

CAUTION 600 FEEDERMAIN CROSSING  
SEE SPECIFICATIONS FOR CONSTRUCTION  
PROVISIONS & RESTRICTIONS

CAUTION 600 FEEDERMAIN CROSSING  
SEE SPECIFICATIONS FOR CONSTRUCTION  
PROVISIONS & RESTRICTIONS

