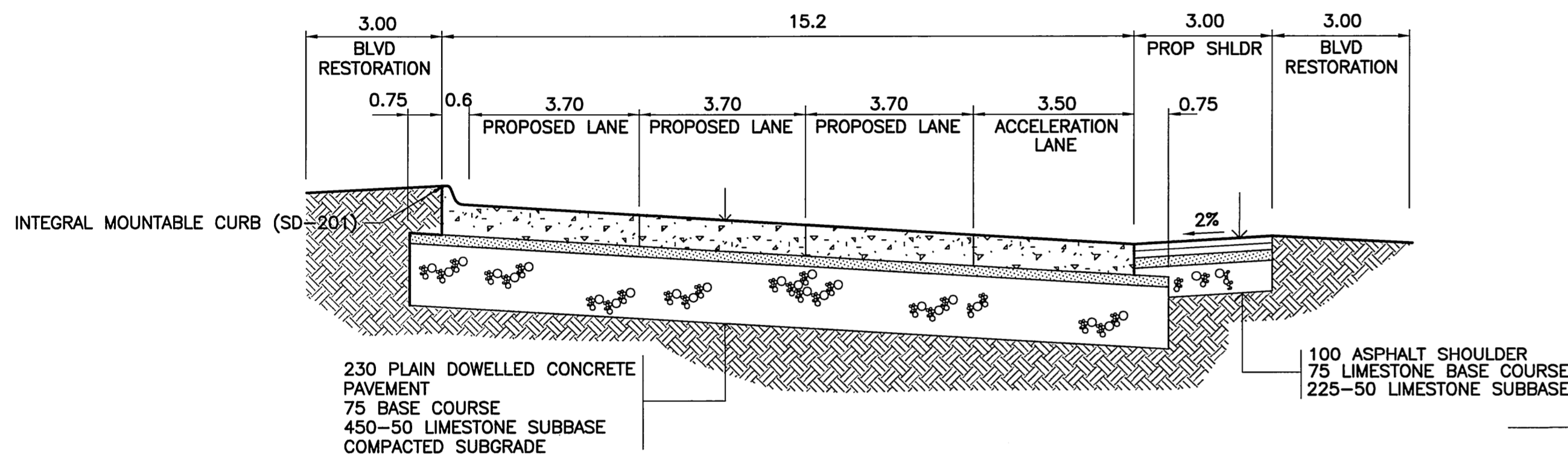
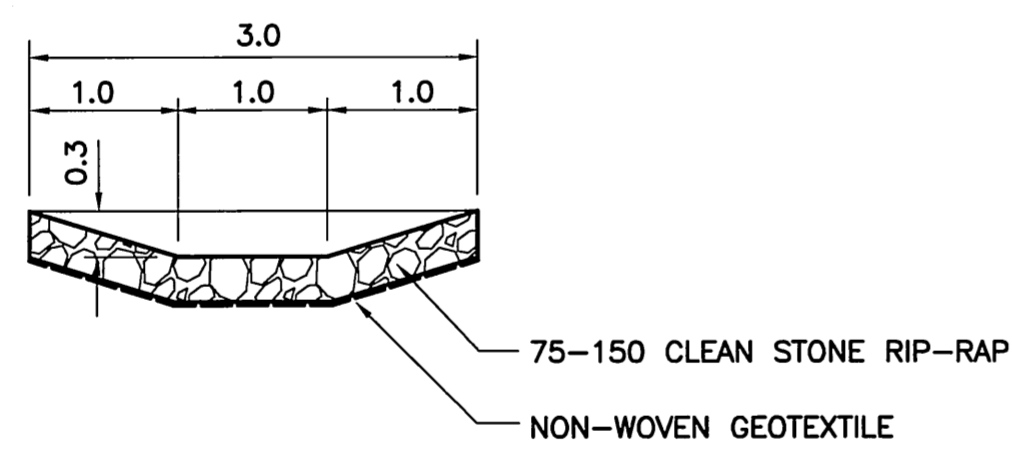


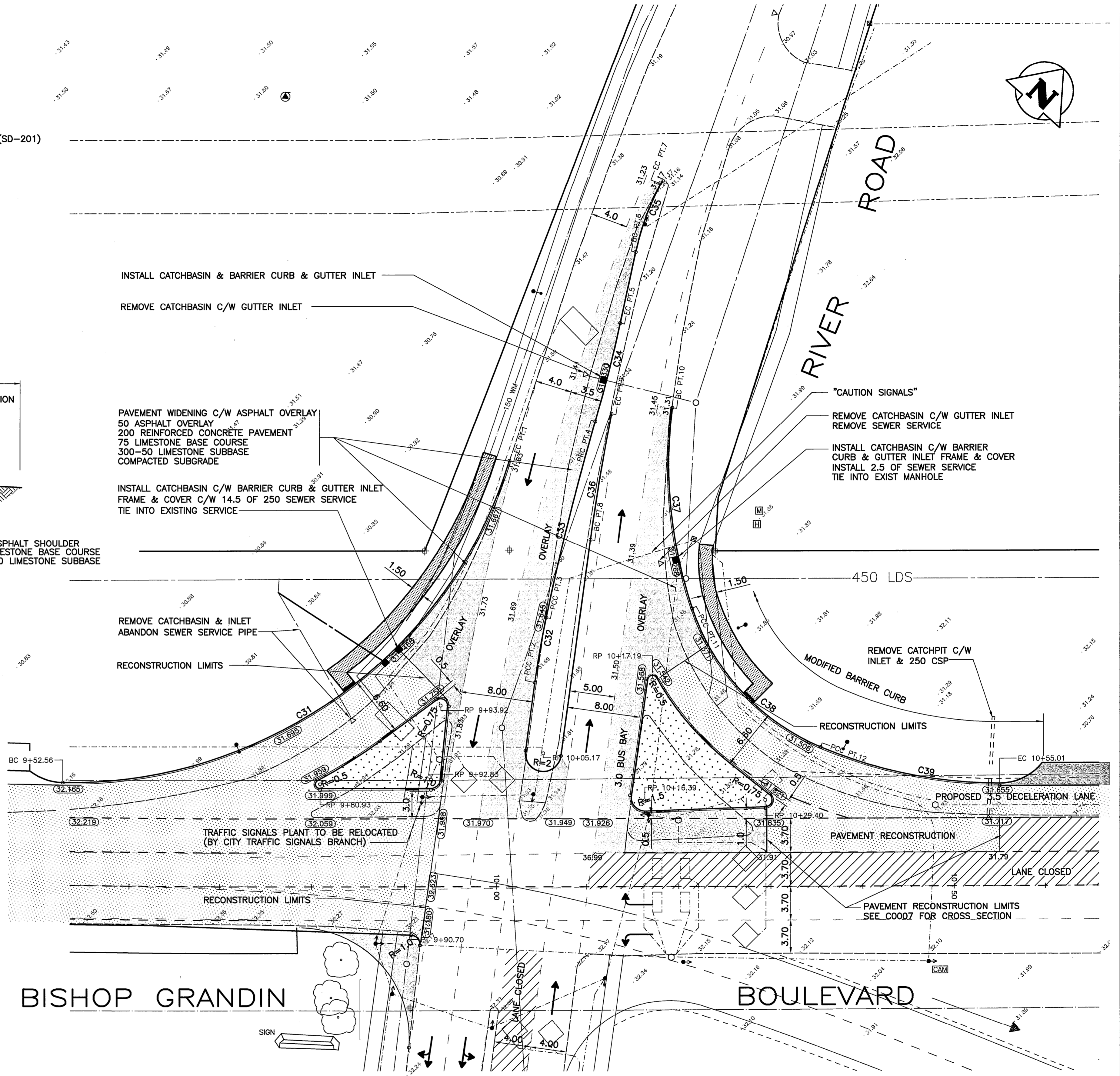
1 PROPOSED PAVEMENT RECONSTRUCTION
EXIT LANES TO PEMBINA HIGHWAY
C0003 C0011 HOR 1:100, VER 1:30



2 PROPOSED PAVEMENT RECONSTRUCTION
WESTBOUND LANES WEST OF RIVER ROAD
C0006 C0011 HOR 1:100, VER 1:30



3 PAVEMENT RIP-RAP DRAIN & SPILL PAD
C0003 C0011 1 : 50



4 RIVER ROAD/BISHOP GRANDIN BOULEVARD
INTERSECTION DETAIL
C0006 C0011 1 : 250

| BISHOP GRANDIN WESTBOUND REHABILITATION AND WIDENING River Road North of Bishop Grandin | | | | | | | | | | |
|--|----------|------------|---------|-----------|------------|-----------|-----------|----------|-----------|----------|
| Control Point | Location | Coordinate | | Parameter | Curve Data | | | | | |
| | | Northing | Easting | | C31 | C32 | C33 | C34 | C35 | C36 |
| EC | PT 1 | 249.53 | 2959.79 | R | 50.0 | 100.0 | 292.5 | 150.0 | 30.0 | 269.8 |
| PCC | PT 2 | 225.32 | 2962.60 | Δ | 73°44'20" | 4°07'50" | 4°19'35" | 4°13'22" | 15°53'05" | 3°43'34" |
| PCC | PT 3 | 232.42 | 2963.86 | Tan | 37.50 | 3.61 | 11.05 | 5.53 | 4.19 | 8.78 |
| PRC | PT 4 | 253.81 | 2969.31 | L | 64.35 | 7.21 | 22.09 | 11.06 | 8.32 | 17.55 |
| BC | PT 5 | 264.62 | 2972.05 | Parameter | C37 | C38 | C39 | | | |
| EC | PT 6 | 272.28 | 2973.73 | R | 50.0 | 25.0 | 50.0 | | | |
| EC | PT 7 | 279.79 | 2976.36 | Δ | 25°26'47" | 48°37'20" | 23°04'26" | | | |
| BC | PT 8 | 240.92 | 2968.79 | Tan | 11.28 | 11.29 | 10.21 | | | |
| EC | PT 9 | 254.64 | 2977.67 | L | 22.19 | 21.22 | 20.14 | | | |
| BC | PT 10 | 255.30 | 2971.10 | | | | | | | |
| PCC | PT 11 | 233.39 | 2979.83 | | | | | | | |
| PCC | PT 12 | 218.26 | 2993.78 | | | | | | | |
| RP | 9+80.93 | 214.22 | 2939.28 | | | | | | | |
| PT | 9+90.70 | 197.72 | 2949.06 | | | | | | | |
| RP | 9+92.83 | 214.72 | 2951.20 | | | | | | | |
| RP | 9+93.92 | 222.81 | 2952.26 | | | | | | | |
| RP | 10+05.17 | 217.60 | 2963.52 | | | | | | | |
| RP | 10+16.39 | 212.75 | 2974.74 | | | | | | | |
| BC | 10+17.19 | 225.81 | 2975.53 | | | | | | | |
| BC | 10+29.40 | 212.47 | 2987.75 | | | | | | | |



| | | | | | |
|----------------------|----------|---------------------------------|---|---|--|
| B.M. ELEV. | F.B. | WARDROP Engineering Inc. | DESIGNED BY DAL DRAWN BY NL HOR. SCALE: AS NOTED VERTICAL: | CHECKED BY APPROVED BY ACCEPTED BY DATE 05-02-08 | W.J. FUNK REGISTERED ENGINEER Feb 1/08 |
| 00 ISSUED FOR TENDER | 08.02.04 | | | | |

| | | |
|---|--|--|
| THE CITY OF WINNIPEG PUBLIC WORKS DEPARTMENT TRANSPORTATION ENGINEERING DIVISION | | CITY DRAWING NUMBER B173-08-54W SHEET OF 54 54 C0011 |
| FORT GARRY BRIDGE REHABILITATION DETAILS | | |