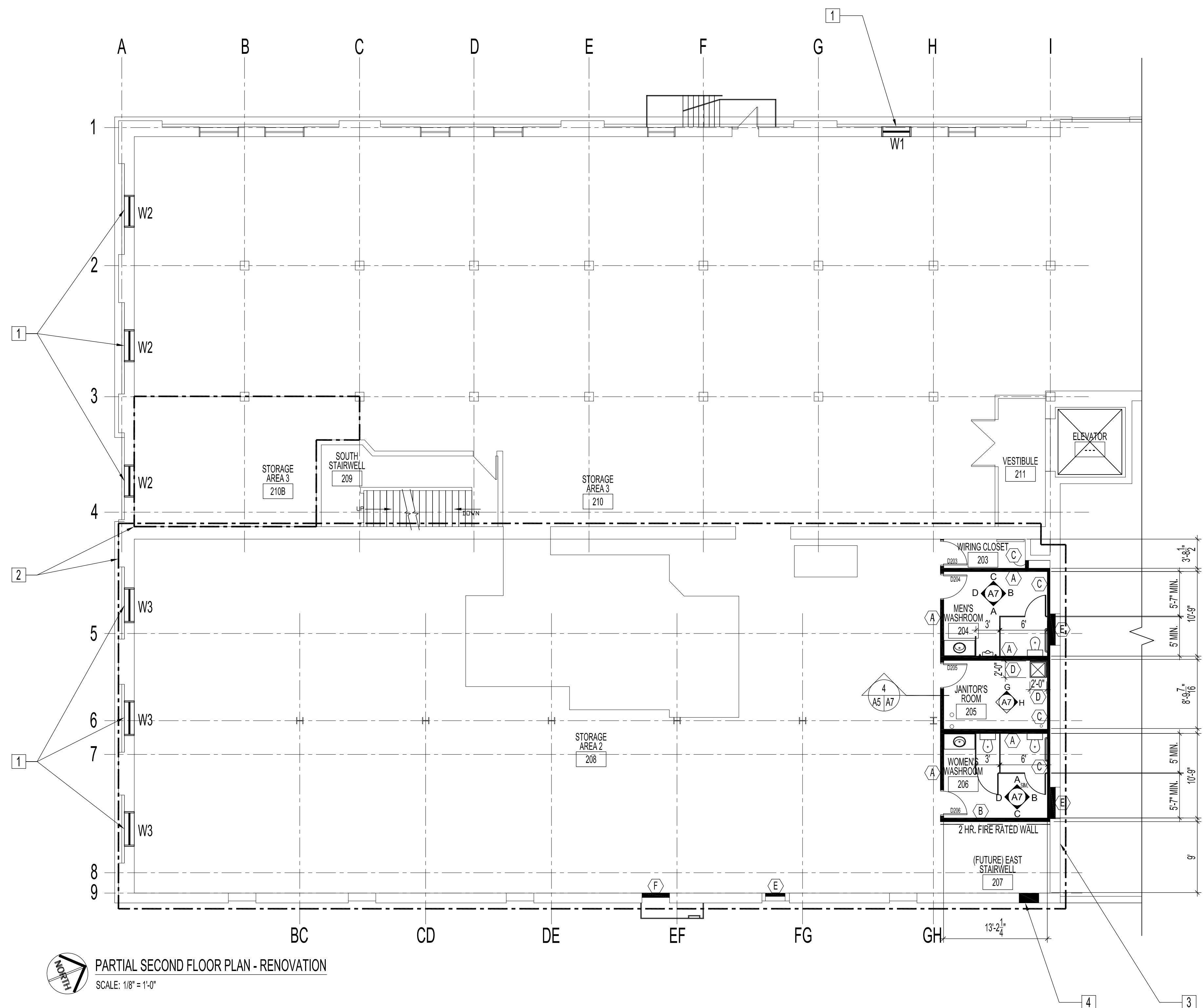


NOTES :
SEE RENOVATION PLAN, MECHANICAL & ELECTRICAL DWGS., FLOOR FINISH PLAN & ROOM FINISH SCHEDULE FOR FINISHES & MISC. ITEMS NOT MENTIONED. SEE SHEET A1 FOR WALL TYPES, FIRE STOP & FIRE RATED ASSEMBLIES LEGEND.



RENOVATION NOTES:


- 1 NEW WINDOWS IN EXISTING OPENINGS. SEE DOOR & ROOM FINISH SCHEDULE DWG. FOR TYPES & DETAILS
- 2 STORAGE AREA #2 208 & STORAGE AREA #3 210B -AREAS OF FLOOR & CEILING TO HAVE A 2-HOUR FIRE RATED ASSEMBLY. SEE LEGEND ON A1.
- 3 WEATHER PROOF & PATCH MISC EXISTING HOLES (APPROX. 20 SQ. FT.) IN NORTH WALL W/ 1" RIGID INSULATION IN LARGER OPENINGS & SPRAY FOAM IN SMALLER CIRCULAR OPENINGS. BOARD UP LARGER OPENINGS W/ EXTERIOR PLYWOOD & WEATHER CAULK & SEAL ALL PERIMETERS. ALL PATCHING MUST BE DONE ON SECOND FLOOR SIDE OF WALL & BE DONE PRIOR TO NEW WALL TYPE (C) IS INSTALLED. ACCESS TO EXISTING ADJACENT ROOM IS NOT ACCESSIBLE.
- 4 SUPPLY & INSTALL NEW FACEBRICK ON INTERIOR & EXTERIOR OF EXISTING OPENING. BRICKWORK TO BE FLUSH WITH EXISTING WALLS. SEE DEMOLITION DWG. FOR DETAILS.

PARTIAL SECOND FLOOR PLAN - RENOVATION
SCALE: 1/8" = 1'-0"

ORIGINAL STAMPED BY: R.K.FOK LI Arch.
DATE: 2008.12.02

| NO. | REVISION/DESCRIPTION | BY | DATE |
|-------|----------------------|----|------|
| SEALS | | | |

| | | | |
|----------|------------|---------------|----------|
| DRAWN BY | MMK | CHECKED BY | APPROVED |
| DATE | 2008.11.25 | USER APPROVAL | |


CITY OF WINNIPEG
 PLANNING, PROPERTY AND
 DEVELOPMENT DEPARTMENT
 CIVIC ACCOMMODATIONS DIVISION
 300 - 65 GARRY ST. R3C 4K4

PROJECT
 SURPLUS STORAGE FACILITY
 MAIN & SECOND FLOOR RENOVATION

311 ROSS AVENUE
 SHEET TITLE
 PARTIAL SECOND FLOOR
 RENOVATION

| | | |
|----------|-------------|-----------|
| SCALE | PROJECT NO. | SHEET NO. |
| AS SHOWN | 2008-016-02 | A5 |