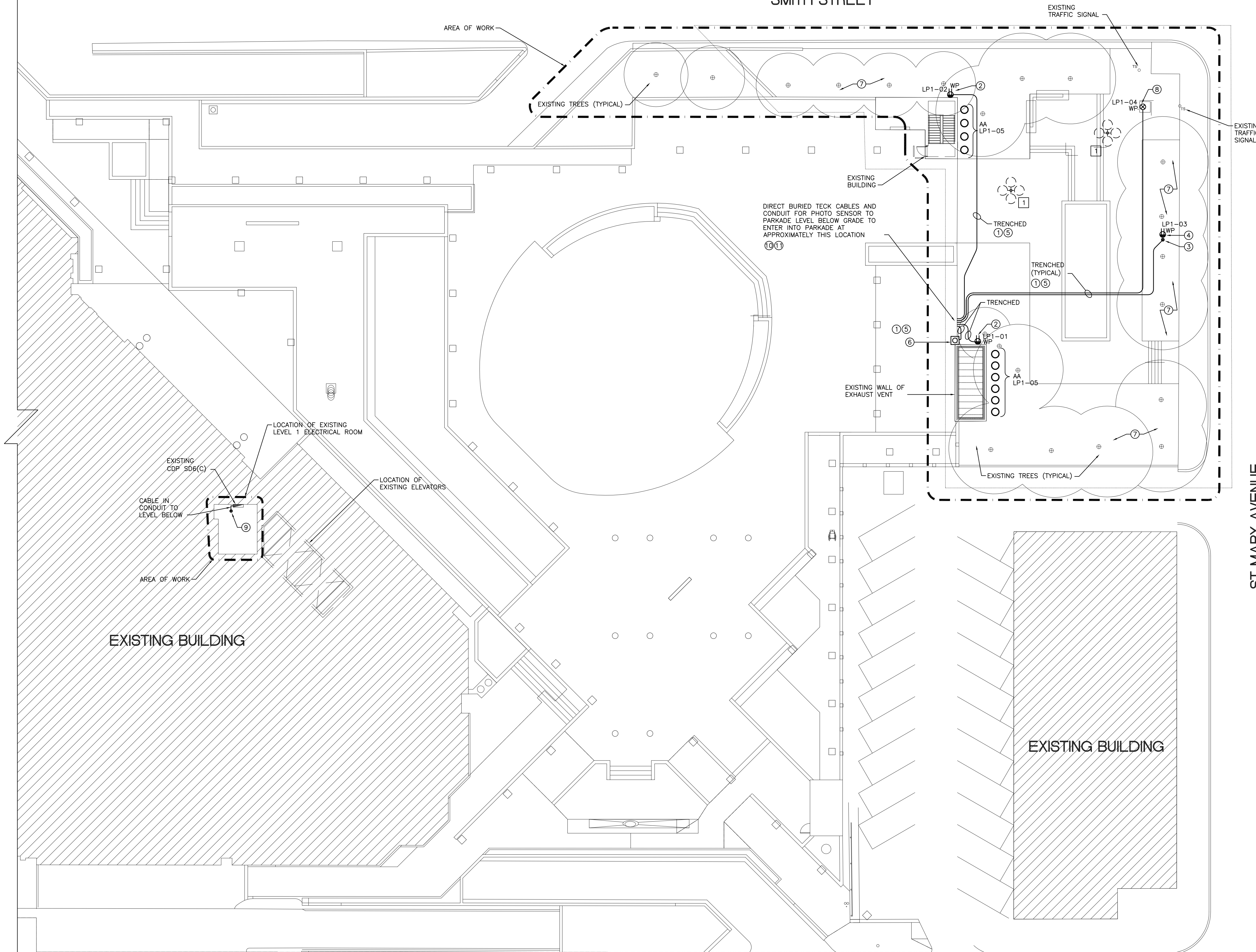


SMITH STREET



DEMOLITION KEY NOTES #8

1. DISCONNECT AND REMOVE EXISTING LIGHT AND POLE. IF CONDUIT WAS INSTALLED, PULL WIRE BACK TO THE SOURCE. IF CABLE IS DIRECT BURIED, ABANDON IN PLACE. 1'-0" BELOW GRADE. REMOVE WIRING FROM BREAKER AND LABEL AS SPARE.

KEY NOTES #7

1. EXIT FROM GROUND AT LOCATION OF RECEPTACLE.
2. PROVIDE WEATHERPROOF GF1 DUPLEX RECEPTACLE C/W IN-USE WEATHERPROOF COVER APPROXIMATELY 7'-0" ABOVE FINISHED GRADE. RUN TECK CABLE ON THE EXTERIOR OF THE BUILDING/VENT. INSTALL PER DETAIL 2 ON DRAWING E0.1.
3. PROVIDE POLE AT APPROXIMATELY THIS LOCATION.
4. PROVIDE WEATHERPROOF GF1 DUPLEX RECEPTACLE C/W IN-USE WEATHERPROOF COVER MOUNTED ON POLE. COORDINATE EXACT LOCATION AND MOUNTING HEIGHT WITH LANDSCAPE DRAWINGS AND CONTRACT ADMINISTRATOR PRIOR TO ROUGH IN.
5. INSTALL UNDERGROUND, DIRECT BURIED AT DEPTH PER LATEST CANADIAN ELECTRICAL CODE.
6. PROVIDE NEW PHOTO SENSOR MODEL WPS-5527-K. INSTALL TWISTED PAIR OF #18AWG PLUS BONDING IN 19MM PVC CONDUIT. INSTALL CONDUIT ON EXTERIOR WALL AND ENTER INTO PARKADE UNDERGROUND THROUGH EXTERIOR WALL.
7. WIRE SPHERE LIGHT FIXTURES MOUNTED ON TREES SHALL BE SUPPLIED AND INSTALLED BY OTHERS.
8. PEDESTAL MOUNTED JUNCTION BOX FOR LIGHT BOX. LIGHT BOX TO BE SUPPLIED AND INSTALLED BY SIGN SUPPLIER. COORDINATE ELECTRICAL REQUIREMENTS AND CONNECTION WITH SUPPLIER PRIOR TO ROUGH IN.
9. WIRE IN CONDUIT TO PENETRATE FLOOR SLAB TO PARKADE LEVEL BELOW. PROVIDE ROXTEC SEAL. REFER TO DRAWING E2.0.
10. ENTER INTO PARKADE BELOW GRADE THROUGH EXTERIOR WALL. EXCAVATE TO EXPOSE EXTERIOR WALL. PROVIDE ROXTEC SEAL.
11. SIZE ROXTEC SEAL ACCORDINGLY TO ACCOMMODATE ALL TECK CABLES AND CONDUIT FOR PHOTO SENSOR.

GENERAL NOTES

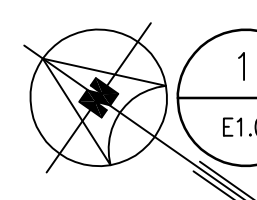
- A. CONTRACTOR SHALL BE RESPONSIBLE FOR COORDINATING EXACT LAYOUT, ROUTING, ETC. VERIFY EXISTING SERVICES ON SITE.
- B. CONTRACTOR SHALL ENSURE COORDINATION BETWEEN ALL TRADES AND CONSULTANT, ON AND OFF SITE, AS REQUIRED FOR INSTALLATION OF ELECTRICAL EQUIPMENT.
- C. CONFIRM ALL EXTERIOR EQUIPMENT LOCATIONS WITH ARCHITECT PRIOR TO TRENCHING.
- D. DIVISION 16 TO REVIEW HEIGHTS AND PLACEMENT OF OUTLETS WITH CONTRACT ADMINISTRATOR PRIOR TO START OF WORK. SHOULD THERE BE ANY CONFUSION OR DISCREPANCIES IT WILL BE THE RESPONSIBILITY OF DIVISION 16 TO CLARIFY WITH THE CONTRACT ADMINISTRATOR PRIOR TO INSTALLATION.
- E. INSTALLATION OF UNDERGROUND CIRCUITS TO CONFORM TO LATEST CANADIAN ELECTRICAL CODE RULES.
- F. REVIEW LANDSCAPE ARCHITECTURAL SITE DETAIL DRAWING PRIOR TO CONDUIT INSTALL.
- G. PROVIDE LIQUID TIGHT CONNECTORS ON ALL OUTDOOR CONDUITS.
- J. ALL EXISTING ELECTRICAL OUTLETS, CONDUITS, WIRING, ETC. REQUIRED TO BE REMOVED ARE NOT NECESSARILY SHOWN ON THIS DRAWING. DIVISION 16 SHALL REMOVE ALL UNNECESSARY EXISTING ELECTRICAL OUTLETS, WIRING CONDUIT, ETC. IN PORTIONS OF AREA IN WHICH ARE BEING ALTERED AND REMODELED. ANY ELECTRICAL OUTLETS, WIRING, ETC. ADJACENT TO THE AREA BEING RENOVATED WHICH ARE NECESSARY FOR THE OPERATION OF THE EXISTING SPACE SHALL BE RELOCATED AS REQUIRED AND RECONNECTED TO SUIT. DIVISION 16 TO ADVISE GENERAL CONTRACTOR TO PATCH, REPAIR AND PAINT EXISTING, WHERE EXISTING ELECTRICAL DEVICES HAVE BEEN REMOVED.
- K. ALL EQUIPMENT, DEVICES, FIXTURES REMOVED UNDER DEMOLITION SCOPE WILL BE FIRST OFFERED TO THE CITY FOR REFUSAL FOLLOWED BY CONTRACTOR AND FINALLY TO BE LEGALLY DISPOSED OF.
- L. FOR ALL EXISTING ELECTRICAL DEVICES, EQUIPMENT, ETC. THAT ARE TO BE REMOVED, REMOVE EXISTING CONDUIT, WIRING, ETC. BACK TO SOURCE.

EXISTING BUILDING

EXISTING BUILDING

ST MARY AVENUE

DONALD STREET



1 SITE PLAN - ELECTRICAL

SCALE: 1:200

NOTE:

SITE SERVICES SHOWN ARE FOR INFORMATION PURPOSES ONLY. THE SERVICES SHOWN ARE APPROXIMATE AND MAY NOT BE ACCURATE. CONTRACTOR TO VERIFY ON SITE ALL LOCATIONS THAT MAY AFFECT SCOPE OF WORK. USE "SOFT-DIG" TECHNIQUES WHEN WORKING AROUND EXISTING SERVICES TO MITIGATE THE POSSIBILITY OF DAMAGE. PRIOR TO TRENCHING, LOCATE ALL EXISTING UNDERGROUND DEVICES IN THIS AREA, IE: HYDRO, TELEPHONE, CABLE TV, NATURAL GAS & STREET SIGNALS.

6.			
5.			
4.			
3.			
2.			
1.			
0.	ISSUED FOR TENDER	RB	06/16/14
NO.	Revisions	BY	DD/MM/YY



SMS ENGINEERING

SMS Engineering Ltd. Consulting Engineers
770 Bradford Street Winnipeg MB Canada R3H 0N3
Telephone: 204-775-0291 Fax: 204-772-2153
sms@smseng.com

Project Title
MILLENNIUM LIBRARY PARK
REDEVELOPMENT PHASE 2

WINNIPEG MANITOBA

Drawing Title
SITE PLAN - ELECTRICAL

Drawn By RB	Checked By RB	Approved By SB
Scale AS SHOWN	Date JUNE 10, 2014	Project No. 14-158-01
Revision Number 0	Drawing Number E1.0	Sheet Order 2 OF 3