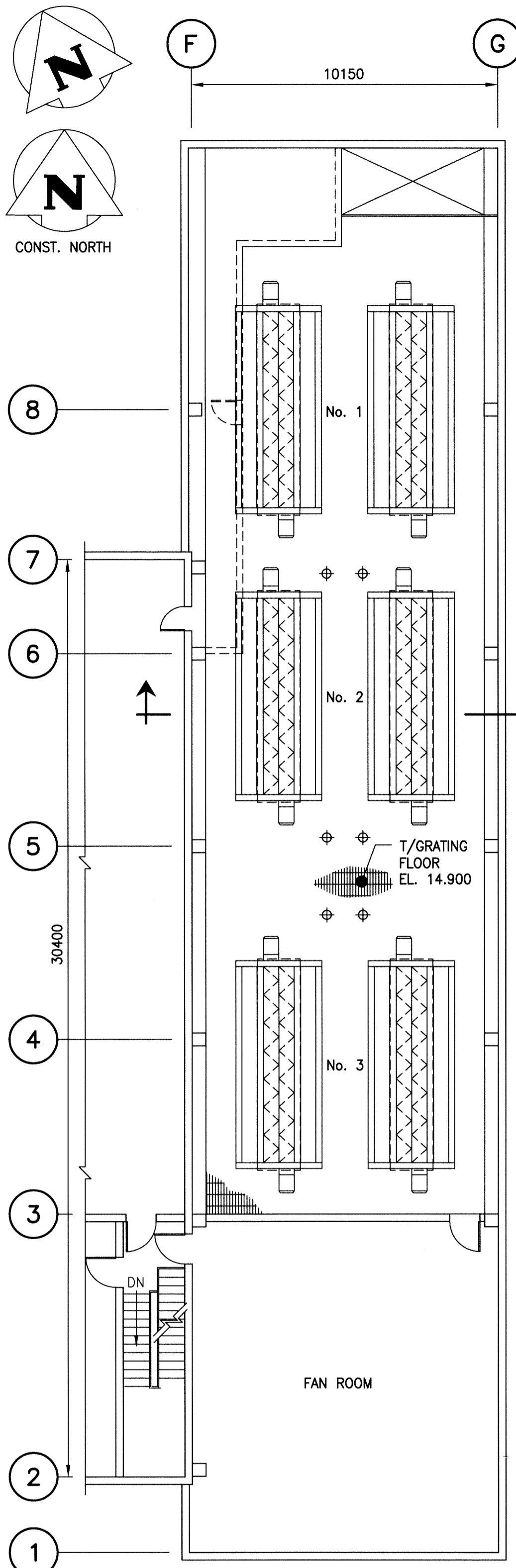
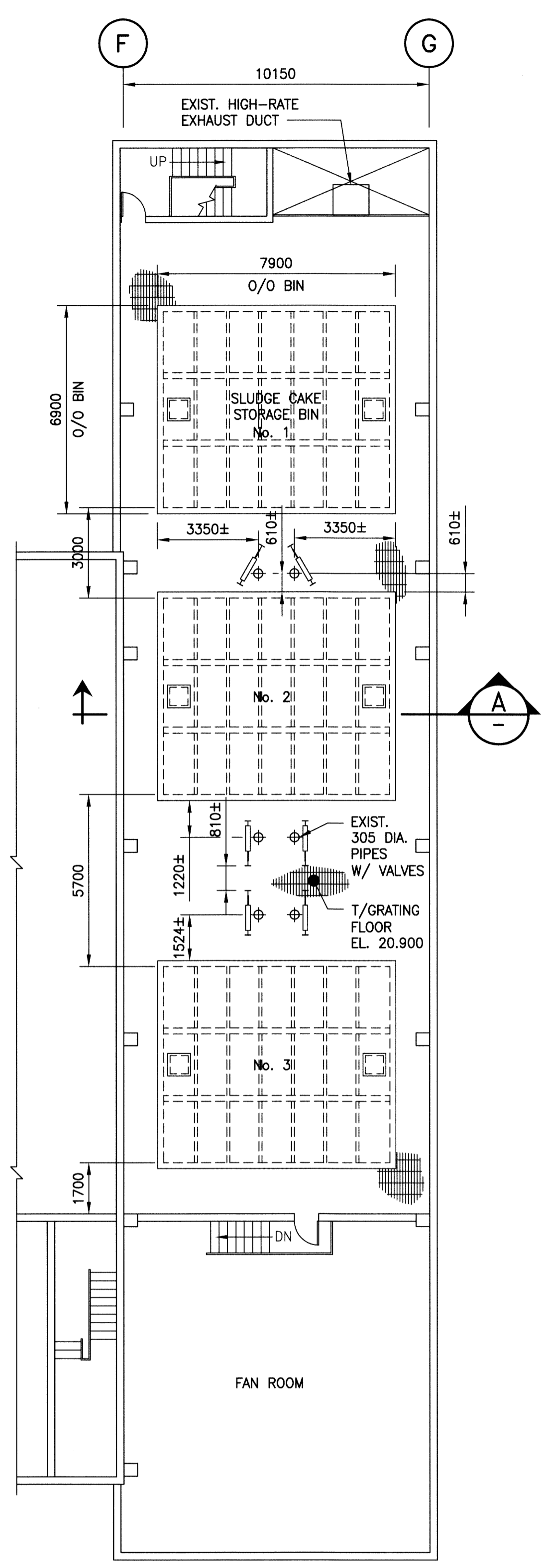


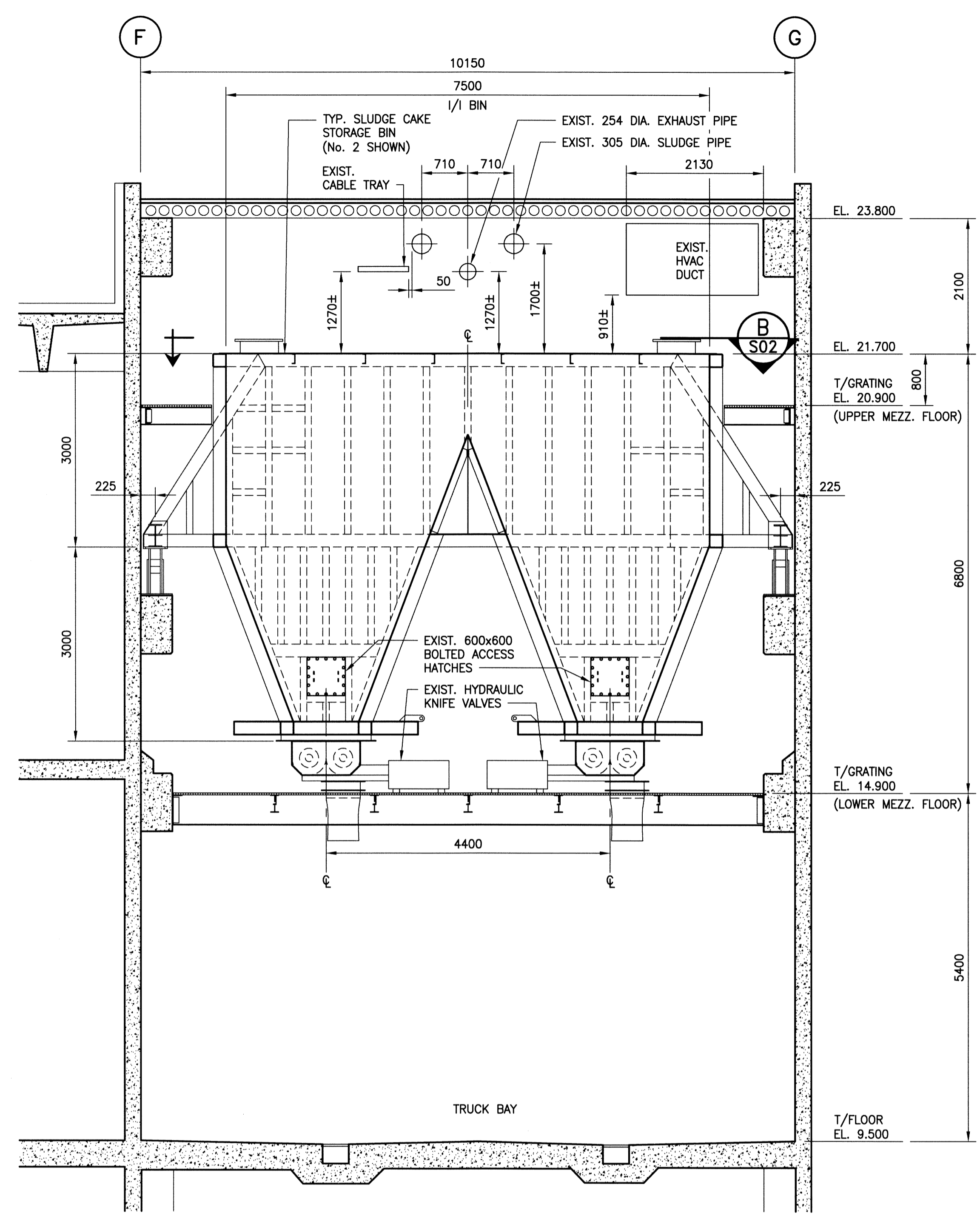
CW-9-10564-1
 File Name: F:\Projects\2014\14-0107-005\Struct\14-0107-005_S01.dwg - Tab: S01 Plotted By: Dberoché 07/15/2014 [Tue 4:27pm]



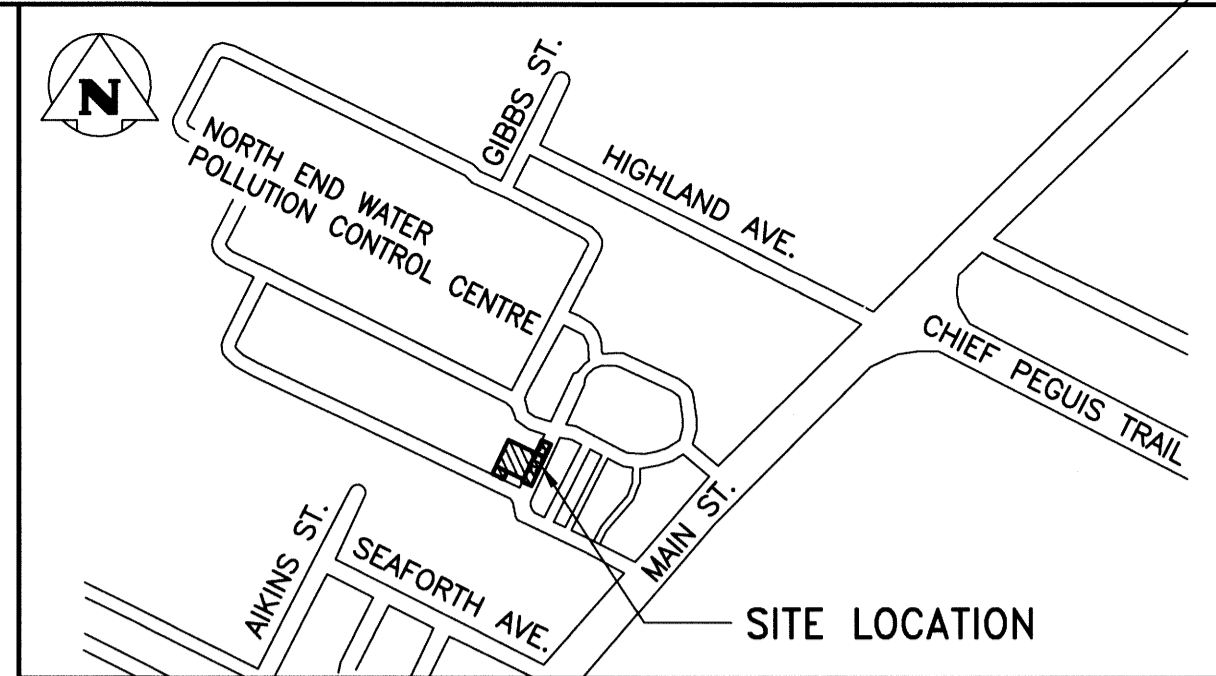
PLAN - LOWER MEZZANINE FLOOR
SCALE: 1:125



PLAN - UPPER MEZZANINE FLOOR
SCALE: 1:125



SECTION A
SCALE: 1:50



SITE PLAN:
N.T.S.

- GENERAL NOTES:**
- ALL SPECIFICATIONS AND CODES SPECIFIED SHALL BE THE LATEST REVISION AVAILABLE.
 - SITE VERIFY ALL DIMENSIONS, ELEVATIONS, DETAILS, QUANTITIES AND CONDITIONS PRIOR TO START OF ANY DEMOLITION, CONSTRUCTION OR PREFABRICATION OF ANY BUILDING COMPONENT.
 - ALL DEMOLITION, FABRICATION, CONSTRUCTION, ETC. SHALL BE CARRIED OUT IN ACCORDANCE WITH ALL PERTINENT BUILDING CODES, AND LOCAL BYLAWS AND ORDINANCES.
 - EACH TRADE SHALL BE RESPONSIBLE TO PROVIDE ADEQUATE PROTECTION FOR THE EXISTING FACILITY/PROPERTY TO PREVENT PHYSICAL DAMAGE AND LOSS OF VALUE OR USE OF ANY KIND, AS A RESULT OF DEMOLITION, CONSTRUCTION AND RELATED ACTIVITIES.
 - TIME AND DURATION OF ANY NECESSARY DISRUPTION IN THE USE OF ANY ROOM, SPACE, SERVICE, EQUIPMENT, ETC. SHALL BE COORDINATED WITH, AND APPROVED BY THE CONTRACT ADMINISTRATOR AT THE START OF THE PROJECT. PROVIDE CONTRACT ADMINISTRATOR WITH MINIMUM ONE WEEK NOTICE (OR AS REQUIRED) PRIOR TO EACH ACTUAL OCCURRENCE.
 - THE CONTRACTOR SHALL BE RESPONSIBLE TO NOTIFY THE CONTRACT ADMINISTRATOR OF ANY PREVIOUSLY UNNOTICED PRE-EXISTING FLAW OR CONDITION THAT MIGHT INCREASE THE SCOPE OF WORK OR COMPROMISE NEW CONSTRUCTION, PRIOR TO THE START OF DEMOLITION AND CONSTRUCTION, OR AS SOON AS IT IS DISCOVERED.
 - DRAWINGS SHALL BE READ IN CONJUNCTION WITH THE PROJECT TECHNICAL SPECIFICATIONS.

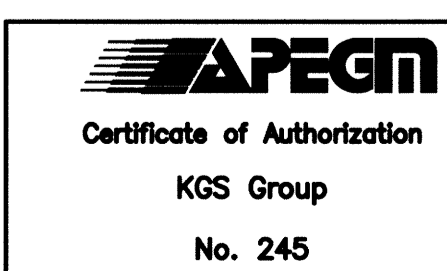
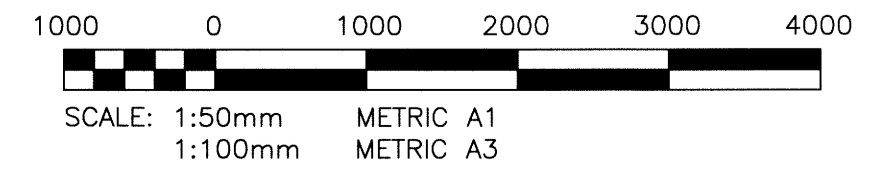
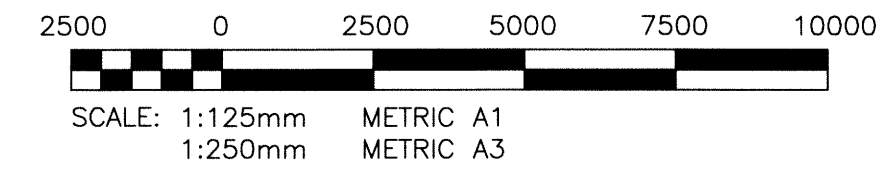
- DEMOLITION:**
- ALL DEMOLITION WORK SHALL BE DONE IN ACCORDANCE WITH THE REQUIREMENTS OF ALL PERTINENT BUILDING CODES, THE MANITOBA DEPARTMENT OF LABOUR, AND ANY OTHER PROVINCIAL AND LOCAL BY-LAWS, REGULATIONS AND ORDINANCES.
 - DEMOLITION SHALL INCLUDE THE SAFE REMOVAL, HAULING AND DUMPING OF ALL DEBRIS, ETC. TO AN APPROVED SITE. ALL COSTS ASSOCIATED WITH THIS OPERATION, INCLUDING TRANSPORT, LICENSES AND FEES SHALL BE THE RESPONSIBILITY OF THE CONTRACTOR.

- STRUCTURAL AND MISCELLANEOUS STEEL:**
- STRUCTURAL AND MISCELLANEOUS STEEL FABRICATION AND ERECTION SHALL BE IN ACCORDANCE WITH CAN/CSA S16 (LATEST).
 - STRUCTURAL STEEL SHALL MEET THE REQUIREMENTS OF CAN/CSA G40.20/G40.21 (LATEST).
 ROLLED SHAPES & PLATES CSA G40.21-300W
 HSS SECTIONS CSA G40.21-350W
 BOLTS, NUTS, & WASHERS ASTM A325
 WELDING ELECTRODES CSA W48.1
 - WELDING SHALL BE IN ACCORDANCE WITH CSA W59 (LATEST), BY WELDERS CERTIFIED AND QUALIFIED IN ACCORDANCE WITH CSA W47.1 (LATEST). ALL WELDS TO BE 6mm UNLESS NOTED OTHERWISE.
 - CONTRACTOR SHALL SUBMIT SHOP DRAWINGS FOR REVIEW PRIOR TO FABRICATION.
 - STRUCTURAL AND MISCELLANEOUS STEEL SHALL BE FINISHED AS INDICATED BELOW, UNLESS OTHERWISE NOTED:

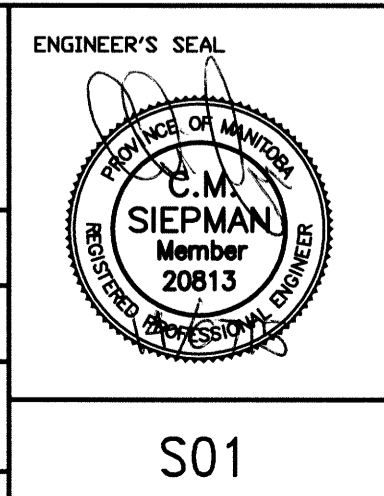
- BIN EXTERIOR (ROOF & PLATE REPAIRS)**
- SURFACE PREP. TO SP3 (WIRE BRUSH)
 - ONE PRIME COAT BAR RUST 235 (6-8 MILS DFT)
 - ONE FINISH COAT BAR RUST 235 (6-8 MILS DFT)
- BIN INTERIOR (ROOF & PLATE REPAIRS)**
- SURFACE PREP. TO SP10 (NEAR WHITE BLAST)
 - ONE COAT SHERFLEX (50-60 MILS DFT)
- COLOUR OF STRUCTURAL AND MISCELLANEOUS STEEL SHALL BE AS FOLLOWS:
 - BIN EXTERIOR: SAFETY YELLOW TO MATCH EXIST.
 - BIN INTERIOR: BEIGE.
 - PAINTED SURFACES OF EXISTING STEEL SHALL BE GROUND SMOOTH TO BARE METAL PRIOR TO FIELD WELDING.

METRIC
WHOLE NUMBERS INDICATE MILLIMETRES
DECIMALIZED NUMBERS INDICATE METRES

- SUGGESTED GENERAL CONSTRUCTION SEQUENCE:**
(REFER TO TECHNICAL SPECIFICATIONS FOR DETAILED REQUIREMENTS)
- INSTALL TEMPORARY BIN ROOF ACCESS PLATFORMS.
 - GRIND EXISTING EXTERIOR PAINTED SURFACES REQUIRING WELDING.
 - COORDINATE BIN SHUTDOWN WITH NEWPCC PERSONNEL.
 - PRELIMINARY WASH DOWN OF INTERIOR OF BIN FROM ROOF LEVEL THROUGH THE EXISTING HATCHES.
 - INSTALL INTERIOR SCAFFOLDING WITH WORKERS INSIDE USING SUPPLIED AIR.
 - THOROUGH WASH DOWN OF INTERIOR OF BIN WITH WORKER INSIDE USING SUPPLIED AIR.
 - INSTALL EXTERIOR HSS TUBES FROM TEMPORARY ACCESS PLATFORMS.
 - NEW ROOF HATCH INSTALLATION (2 REQUIRED PER BIN).
 - REMOVE CORRODED INTERIOR ROOF SUPPORT MEMBERS.
 - SANDBLAST INTERIOR OF BINS TO EXPOSE DETERIORATED PLATE AS DIRECTED BY THE CONTRACT ADMINISTRATOR.
 - INSTALL EXTERIOR CHANNELS AND LOCAL PLATE REPAIRS.
 - RE-SANDBLAST INTERIOR OF BIN FOR COATING APPLICATION.
 - COATING APPLICATION AND CURE (MULTIPLE COATS).
 - REMOVE SCAFFOLDING AND PREPARE BIN FOR RECOMMISSIONING.



FIELD BOOK #:		DESIGNED BY KRD		CHECKED BY CMS	
POSTED TO LBIS		DRAWN BY FBV		APPROVED BY	
		HDR. SCALE AS NOTED		RELEASED FOR CONSTRUCTION	
		VERTICAL AS NOTED		DATE 2014 04 23	
0 ISSUED FOR CONSTRUCTION 14/07/15 CMS		DATE		DATE	
NO. REVISIONS		DATE		DATE	



THE CITY OF WINNIPEG
WATER AND WASTE DEPARTMENT

NEWPCC
SLUDGE CAKE STORAGE BIN REPAIRS
GENERAL ARRANGEMENT
PLAN & SECTIONS

SHEET 1 OF 1
CITY DRAWING NUMBER
1-0101W-S0001-001