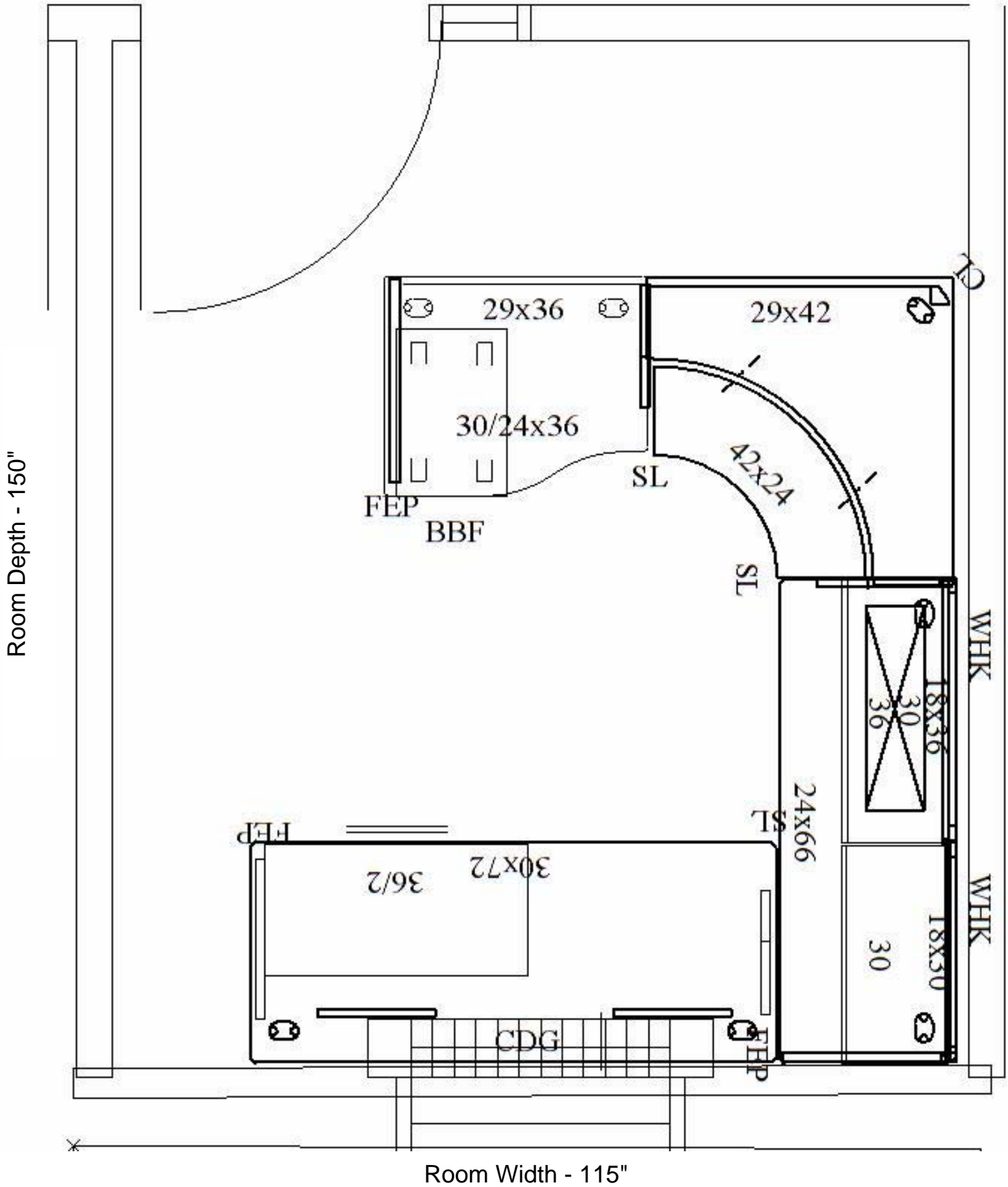


### Item 7 - Room 152 - Standard Workstation - 2D Drawing



**Item 7 - Room 152 - Standard Workstation - 3D Drawing**



## Item 7 - Room 152 - Standard Workstation - Parts List

| Item | Mfg  | Part Number    | Part Description                             | Qty |
|------|------|----------------|--|-----|
| 1    | ALS  | CEP3029F       | Freestanding 30DX29-1/2H End Pnl Sup         | 1   |
|      |      | \$(COREPNT)    | Core Clr Opts                                |     |
|      |      | .P01           | CLR: Driftwood de-emph 4/12/09               |     |
| 2    | ALS  | CSL2429F       | Freestanding 24Dx29-1/2H Sup Leg             | 1   |
|      |      | \$(COREPNT)    | Core Clr Opts                                |     |
|      |      | .P01           | CLR: Driftwood de-emph 4/12/09               |     |
| 3    | ALS  | CS429          | Full-Hgt 29-1/2Hx42W Mod Pnl                 | 1   |
|      |      | \$(COREPNT)    | Core Clr Opts                                |     |
|      |      | .P01           | CLR: Driftwood de-emph 4/12/09               |     |
| 4    | ALS  | 801550         | Permanent-Wall Hanger Kit 65H - Pair         | 2   |
|      |      | \$(COREPNT)    | Core Clr Opts                                |     |
|      |      | .P01           | CLR: Driftwood de-emph 4/12/09               |     |
| 5    | ALS  | 861836         | Tackboard 36W 18H                            | 1   |
|      |      | \$(1)          | GRD 1 FAB                                    |     |
|      |      | .ECH           | FAB: Etch                                    |     |
|      |      | 903            | CLR: Lithograph                              |     |
| 6    | ALS  | 870830         | Tasklight w/electronic Ballast for 30W       | 1   |
|      |      | .X             | CLR: No Color Choice                         |     |
| 7    | ALS  | AWCDPC-4224    | Altitude Corner 24Dx42W Flat Eg Dual Surface | 1   |
|      |      | .GK            | 7-11/16" from either crner Edg               |     |
|      |      | P              | Plastic Grommet                              |     |
|      |      | \$(L1WDGR)     | L1 Woodgrain Lam Opts                        |     |
|      |      | .LWD           | Lam: Natural Maple-Former D                  |     |
|      |      | .E2            | Edg: Warm Beige                              |     |
|      | .P01 | CLR: Driftwood |  |     |
| 8    | ALS  | 833072A        | Primary 30Dx72W T-Mold Eg Lam w/Grommets     | 1   |
|      |      | \$(L1WDGR)     | L1 Woodgrain Lam Opts                        |     |
|      |      | .LWD           | Lam: Natural Maple-Former D                  |     |
|      |      | .E2            | Edg: Warm Beige                              |     |
| 8    |      | .P             | Plastic Grommet                              |     |
|      | ALS  | CDG            | Gussets (1 Pr)                               | 1   |
|      |      | \$(COREPNT)    | Core Clr Opts                                |     |
|      |      | .P01           | CLR: Driftwood de-emph 4/12/09               |     |
| 9    | ALS  | 832466A        | Primary 24Dx66W T-Mold Eg Lam w/Grommets     | 1   |
|      |      | \$(L1WDGR)     | L1 Woodgrain Lam Opts                        |     |
|      |      | .LWD           | Lam: Natural Maple-Former D                  |     |
|      |      | .E2            | Edg: Warm Beige                              |     |
| 10   |      | .P             | Plastic Grommet                              |     |
|      | ALS  | CSL2429P       | Panel Mount 24Dx29-1/2H Support Leg          | 1   |
|      |      | \$(COREPNT)    | Core Clr Opts                                |     |

## Item 7 - Room 152 - Standard Workstation - Parts List

|    |     |             |  |   |
|----|-----|-------------|--|---|
|    |     | .P01        | CLR: Driftwood de-emph 4/12/09               |   |
| 11 | ALS | CEP2429P    | Panel Mount 24DX29-1/2H End Panel Support    | 1 |
|    |     | \$(COREPNT) | Core Clr Opts                                |   |
|    |     | .P01        | CLR: Driftwood de-emph 4/12/09               |   |
| 12 | ALS | 861830      | Tackboard 30W 18H                            | 1 |
|    |     | \$(1)       | GRD 1 FAB                                    |   |
|    |     | .ECH        | FAB: Etch                                    |   |
|    |     | 903         | CLR: Lithograph                              |   |
| 13 | ALS | CDL29       | Corner Desk Leg 29-1/2H                      | 1 |
|    |     | \$(COREPNT) | Core Clr Opts                                |   |
|    |     | .P01        | CLR: Driftwood de-emph 4/12/09               |   |
| 14 | ALS | 8363024A    | Wave W/S 36Wx30L/24R T-Mold Eg Lam w/Grom    | 1 |
|    |     | \$(L1WDGR)  | L1 Woodgrain Lam Opts                        |   |
|    |     | .LWD        | Lam: Natural Maple-Former D                  |   |
|    |     | .E2         | Edg: Warm Beige                              |   |
|    |     | .P          | Plastic Grommet                              |   |
| 15 | ALS | CS369       | Full-Hgt 29-1/2Hx36W Mod Pnl                 | 1 |
|    |     | \$(COREPNT) | Core Clr Opts                                |   |
|    |     | .P01        | CLR: Driftwood de-emph 4/12/09               |   |
| 16 | ALS | CE1636FDN   | Ess OH Stg Cab 36W/Sq Pntd Flip Door No Pull | 1 |
|    |     | \$(COREPNT) | Core Clr Opts                                |   |
|    |     | .P01        | CLR: Driftwood de-emph 4/12/09               |   |
|    |     | .STD        | Standard Random key                          |   |
| 17 | ALS | CE1630FDN   | Ess OH Stg Cab 30W/Sq Pntd Flip Door No Pull | 1 |
|    |     | \$(COREPNT) | Core Clr Opts                                |   |
|    |     | .P01        | CLR: Driftwood de-emph 4/12/09               |   |
|    |     | .STD        | Standard Random key                          |   |
| 18 | ALS | PM137-233I  | Ess Mobile Ped BBF 26-7/8H 22-7/8D Int Pull  | 1 |
|    |     | \$(CORE)    | Core Clr Opts                                |   |
|    |     | .P01        | CLR: Driftwood de-emph 4/12/09               |   |
|    |     | .STD        | Standard Random key                          |   |
| 19 | ALS | ELF236NI    | Ess Lat 36W 27-1/4H 2-12" Drws Int Pull      | 1 |
|    |     | \$(CORE)    | Core Clr Opts                                |   |
|    |     | .P01        | CLR: Driftwood de-emph 4/12/09               |   |
|    |     | .STD        | Standard Random key                          |   |
| 20 | ALS | CEP2429F    | Freestanding 24DX29-1/2H End Pnl Sup         | 1 |
|    |     | \$(COREPNT) | Core Clr Opts                                |   |
|    |     | .P01        | CLR: Driftwood de-emph 4/12/09               |   |
| 21 | ALS | CSL2429F    | Freestanding 24Dx29-1/2H Sup Leg             | 1 |
|    |     | \$(COREPNT) | Core Clr Opts                                |   |
| 22 |     | .P01        | CLR: Driftwood de-emph 4/12/09               |   |