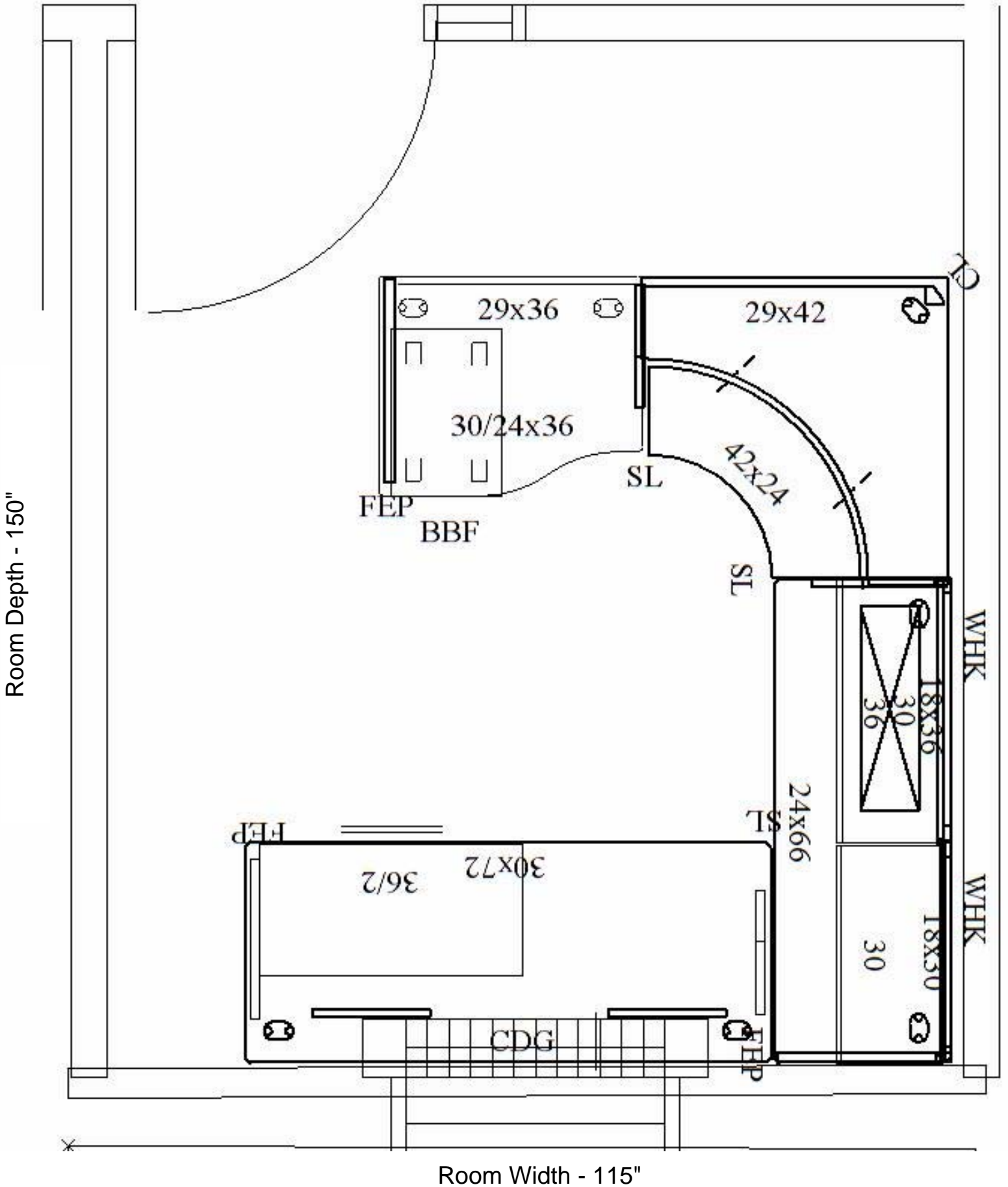


Item 12 - Room 070 - Standard Workstation - 2D Drawing



Item 12 - Room 070 - Standard Workstation - 3D Drawing



Item 12 - Room 070 - Standard Workstation - Parts List

Item	Mfg	Part Number	Part Description	Qty
1	ALS	CEP3029F	Freestanding 30DX29-1/2H End Pnl Sup	1
		\$(COREPNT)	Core Clr Opts	
		.P01	CLR: Driftwood de-emph 4/12/09	
2	ALS	CSL2429F	Freestanding 24Dx29-1/2H Sup Leg	1
		\$(COREPNT)	Core Clr Opts	
		.P01	CLR: Driftwood de-emph 4/12/09	
3	ALS	CS429	Full-Hgt 29-1/2Hx42W Mod Pnl	1
		\$(COREPNT)	Core Clr Opts	
		.P01	CLR: Driftwood de-emph 4/12/09	
4	ALS	801550	Permanent-Wall Hanger Kit 65H - Pair	2
		\$(COREPNT)	Core Clr Opts	
		.P01	CLR: Driftwood de-emph 4/12/09	
5	ALS	861836	Tackboard 36W 18H	1
		\$(1)	GRD 1 FAB	
		.ECH	FAB: Etch	
		903	CLR: Lithograph	
6	ALS	870830	Tasklight w/electronic Ballast for 30W	1
		.X	CLR: No Color Choice	
7	ALS	AWCDPC-4224	Altitude Corner 24Dx42W Flat Eg Dual Surface	1
		.GK	7-11/16" from either crner Edg	
		P	Plastic Grommet	
		\$(L1WDGR)	L1 Woodgrain Lam Opts	
		.LWD	Lam: Natural Maple-Former D	
		.E2	Edg: Warm Beige	
	.P01	CLR: Driftwood		
8	ALS	833072A	Primary 30Dx72W T-Mold Eg Lam w/Grommets	1
		\$(L1WDGR)	L1 Woodgrain Lam Opts	
		.LWD	Lam: Natural Maple-Former D	
		.E2	Edg: Warm Beige	
8		.P	Plastic Grommet	
	ALS	CDG	Gussets (1 Pr)	1
		\$(COREPNT)	Core Clr Opts	
	.P01	CLR: Driftwood de-emph 4/12/09		
9	ALS	832466A	Primary 24Dx66W T-Mold Eg Lam w/Grommets	1
		\$(L1WDGR)	L1 Woodgrain Lam Opts	
		.LWD	Lam: Natural Maple-Former D	
		.E2	Edg: Warm Beige	
10		.P	Plastic Grommet	
	ALS	CSL2429P	Panel Mount 24Dx29-1/2H Support Leg	1
		\$(COREPNT)	Core Clr Opts	

Item 12 - Room 070 - Standard Workstation - Parts List

		.P01	CLR: Driftwood de-emph 4/12/09	
11	ALS	CEP2429P	Panel Mount 24DX29-1/2H End Panel Support	1
		\$(COREPNT)	Core Clr Opts	
		.P01	CLR: Driftwood de-emph 4/12/09	
12	ALS	861830	Tackboard 30W 18H	1
		\$(1)	GRD 1 FAB	
		.ECH	FAB: Etch	
		903	CLR: Lithograph	
13	ALS	CDL29	Corner Desk Leg 29-1/2H	1
		\$(COREPNT)	Core Clr Opts	
		.P01	CLR: Driftwood de-emph 4/12/09	
14	ALS	8363024A	Wave W/S 36Wx30L/24R T-Mold Eg Lam w/Grom	1
		\$(L1WDGR)	L1 Woodgrain Lam Opts	
		.LWD	Lam: Natural Maple-Former D	
		.E2	Edg: Warm Beige	
		.P	Plastic Grommet	
15	ALS	CS369	Full-Hgt 29-1/2Hx36W Mod Pnl	1
		\$(COREPNT)	Core Clr Opts	
		.P01	CLR: Driftwood de-emph 4/12/09	
16	ALS	CE1636FDN	Ess OH Stg Cab 36W/Sq Pntd Flip Door No Pull	1
		\$(COREPNT)	Core Clr Opts	
		.P01	CLR: Driftwood de-emph 4/12/09	
		.STD	Standard Random key	
17	ALS	CE1630FDN	Ess OH Stg Cab 30W/Sq Pntd Flip Door No Pull	1
		\$(COREPNT)	Core Clr Opts	
		.P01	CLR: Driftwood de-emph 4/12/09	
		.STD	Standard Random key	
18	ALS	PM137-233I	Ess Mobile Ped BBF 26-7/8H 22-7/8D Int Pull	1
		\$(CORE)	Core Clr Opts	
		.P01	CLR: Driftwood de-emph 4/12/09	
		.STD	Standard Random key	
19	ALS	ELF236NI	Ess Lat 36W 27-1/4H 2-12" Drws Int Pull	1
		\$(CORE)	Core Clr Opts	
		.P01	CLR: Driftwood de-emph 4/12/09	
		.STD	Standard Random key	
20	ALS	CEP2429F	Freestanding 24DX29-1/2H End Pnl Sup	1
		\$(COREPNT)	Core Clr Opts	
		.P01	CLR: Driftwood de-emph 4/12/09	
21	ALS	CSL2429F	Freestanding 24Dx29-1/2H Sup Leg	1
		\$(COREPNT)	Core Clr Opts	
22		.P01	CLR: Driftwood de-emph 4/12/09	