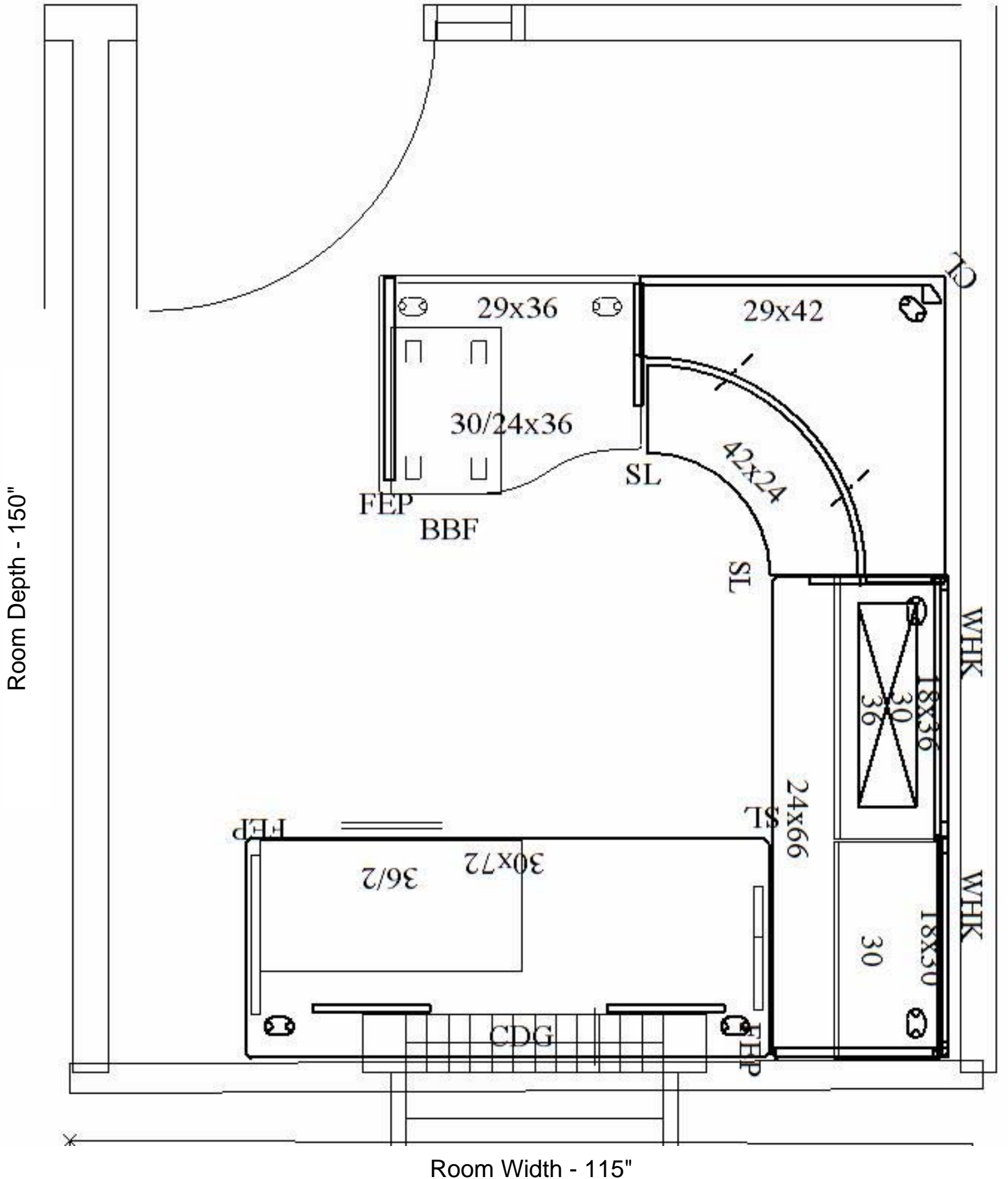


Item 16 - Room 047 - Standard Workstation - 2D Drawing



Item 16 - Room 047 - Standard Workstation - 3D Drawing



Item 16 - Room 047 - Standard Workstation - Parts List

| Item | Mfg | Part Number | Part Description | Qty |
|------|-----|-------------|--|-----|
| 1 | ALS | CEP3029F | Freestanding 30DX29-1/2H End Pnl Sup | 1 |
| | | \$(COREPNT) | Core Clr Opts | |
| | | .P01 | CLR: Driftwood de-emph 4/12/09 | |
| 2 | ALS | CSL2429F | Freestanding 24Dx29-1/2H Sup Leg | 1 |
| | | \$(COREPNT) | Core Clr Opts | |
| | | .P01 | CLR: Driftwood de-emph 4/12/09 | |
| 3 | ALS | CS429 | Full-Hgt 29-1/2Hx42W Mod Pnl | 1 |
| | | \$(COREPNT) | Core Clr Opts | |
| | | .P01 | CLR: Driftwood de-emph 4/12/09 | |
| 4 | ALS | 801550 | Permanent-Wall Hanger Kit 65H - Pair | 2 |
| | | \$(COREPNT) | Core Clr Opts | |
| | | .P01 | CLR: Driftwood de-emph 4/12/09 | |
| 5 | ALS | 861836 | Tackboard 36W 18H | 1 |
| | | \$(1) | GRD 1 FAB | |
| | | .ECH | FAB: Etch | |
| | | 903 | CLR: Lithograph | |
| 6 | ALS | 870830 | Tasklight w/electronic Ballast for 30W | 1 |
| | | .X | CLR: No Color Choice | |
| 7 | ALS | AWCDPC-4224 | Altitude Corner 24Dx42W Flat Eg Dual Surface | 1 |
| | | .GK | 7-11/16" from either crner Edg | |
| | | P | Plastic Grommet | |
| | | \$(L1WDGR) | L1 Woodgrain Lam Opts | |
| | | .LWD | Lam: Natural Maple-Former D | |
| | | .E2 | Edg: Warm Beige | |
| 8 | ALS | 833072A | Primary 30Dx72W T-Mold Eg Lam w/Grommets | 1 |
| | | \$(L1WDGR) | L1 Woodgrain Lam Opts | |
| | | .LWD | Lam: Natural Maple-Former D | |
| | | .E2 | Edg: Warm Beige | |
| 8 | | .P | Plastic Grommet | |
| | ALS | CDG | Gussets (1 Pr) | 1 |
| | | \$(COREPNT) | Core Clr Opts | |
| 9 | | .P01 | CLR: Driftwood de-emph 4/12/09 | |
| | ALS | 832466A | Primary 24Dx66W T-Mold Eg Lam w/Grommets | 1 |
| | | \$(L1WDGR) | L1 Woodgrain Lam Opts | |
| | | .LWD | Lam: Natural Maple-Former D | |
| | | .E2 | Edg: Warm Beige | |
| 10 | | .P | Plastic Grommet | |
| | ALS | CSL2429P | Panel Mount 24Dx29-1/2H Support Leg | 1 |
| | | \$(COREPNT) | Core Clr Opts | |

Item 16 - Room 047 - Standard Workstation - Parts List

| | | | | |
|----|-----|-------------|--|---|
| | | .P01 | CLR: Driftwood de-emph 4/12/09 | |
| 11 | ALS | CEP2429P | Panel Mount 24DX29-1/2H End Panel Support | 1 |
| | | \$(COREPNT) | Core Clr Opts | |
| | | .P01 | CLR: Driftwood de-emph 4/12/09 | |
| 12 | ALS | 861830 | Tackboard 30W 18H | 1 |
| | | \$(1) | GRD 1 FAB | |
| | | .ECH | FAB: Etch | |
| | | 903 | CLR: Lithograph | |
| 13 | ALS | CDL29 | Corner Desk Leg 29-1/2H | 1 |
| | | \$(COREPNT) | Core Clr Opts | |
| | | .P01 | CLR: Driftwood de-emph 4/12/09 | |
| 14 | ALS | 8363024A | Wave W/S 36Wx30L/24R T-Mold Eg Lam w/Grom | 1 |
| | | \$(L1WDGR) | L1 Woodgrain Lam Opts | |
| | | .LWD | Lam: Natural Maple-Former D | |
| | | .E2 | Edg: Warm Beige | |
| | | .P | Plastic Grommet | |
| 15 | ALS | CS369 | Full-Hgt 29-1/2Hx36W Mod Pnl | 1 |
| | | \$(COREPNT) | Core Clr Opts | |
| | | .P01 | CLR: Driftwood de-emph 4/12/09 | |
| 16 | ALS | CE1636FDN | Ess OH Stg Cab 36W/Sq Pntd Flip Door No Pull | 1 |
| | | \$(COREPNT) | Core Clr Opts | |
| | | .P01 | CLR: Driftwood de-emph 4/12/09 | |
| | | .STD | Standard Random key | |
| 17 | ALS | CE1630FDN | Ess OH Stg Cab 30W/Sq Pntd Flip Door No Pull | 1 |
| | | \$(COREPNT) | Core Clr Opts | |
| | | .P01 | CLR: Driftwood de-emph 4/12/09 | |
| | | .STD | Standard Random key | |
| 18 | ALS | PM137-233I | Ess Mobile Ped BBF 26-7/8H 22-7/8D Int Pull | 1 |
| | | \$(CORE) | Core Clr Opts | |
| | | .P01 | CLR: Driftwood de-emph 4/12/09 | |
| | | .STD | Standard Random key | |
| 19 | ALS | ELF236NI | Ess Lat 36W 27-1/4H 2-12" Drws Int Pull | 1 |
| | | \$(CORE) | Core Clr Opts | |
| | | .P01 | CLR: Driftwood de-emph 4/12/09 | |
| | | .STD | Standard Random key | |
| 20 | ALS | CEP2429F | Freestanding 24DX29-1/2H End Pnl Sup | 1 |
| | | \$(COREPNT) | Core Clr Opts | |
| | | .P01 | CLR: Driftwood de-emph 4/12/09 | |
| 21 | ALS | CSL2429F | Freestanding 24Dx29-1/2H Sup Leg | 1 |
| | | \$(COREPNT) | Core Clr Opts | |
| 22 | | .P01 | CLR: Driftwood de-emph 4/12/09 | |