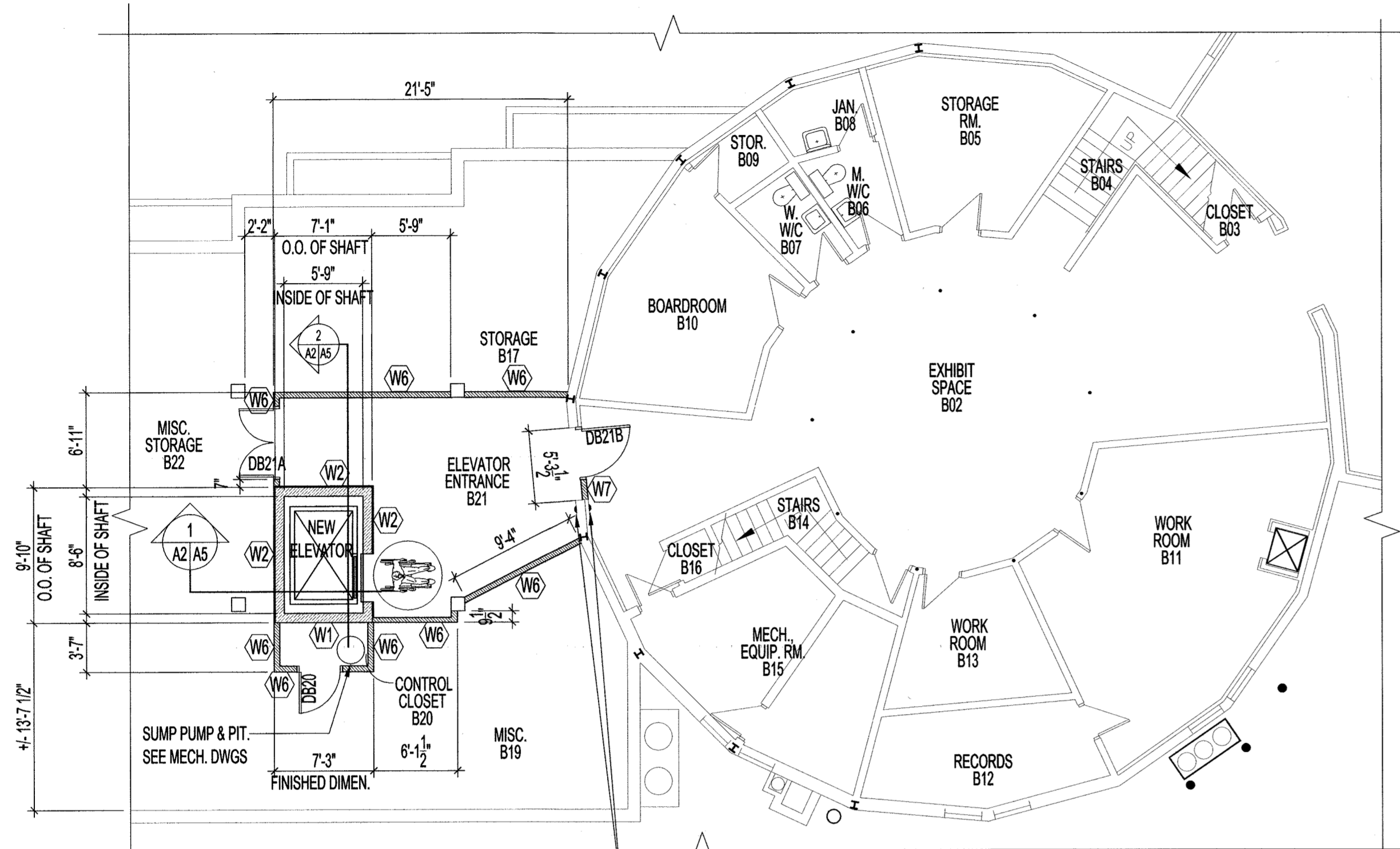


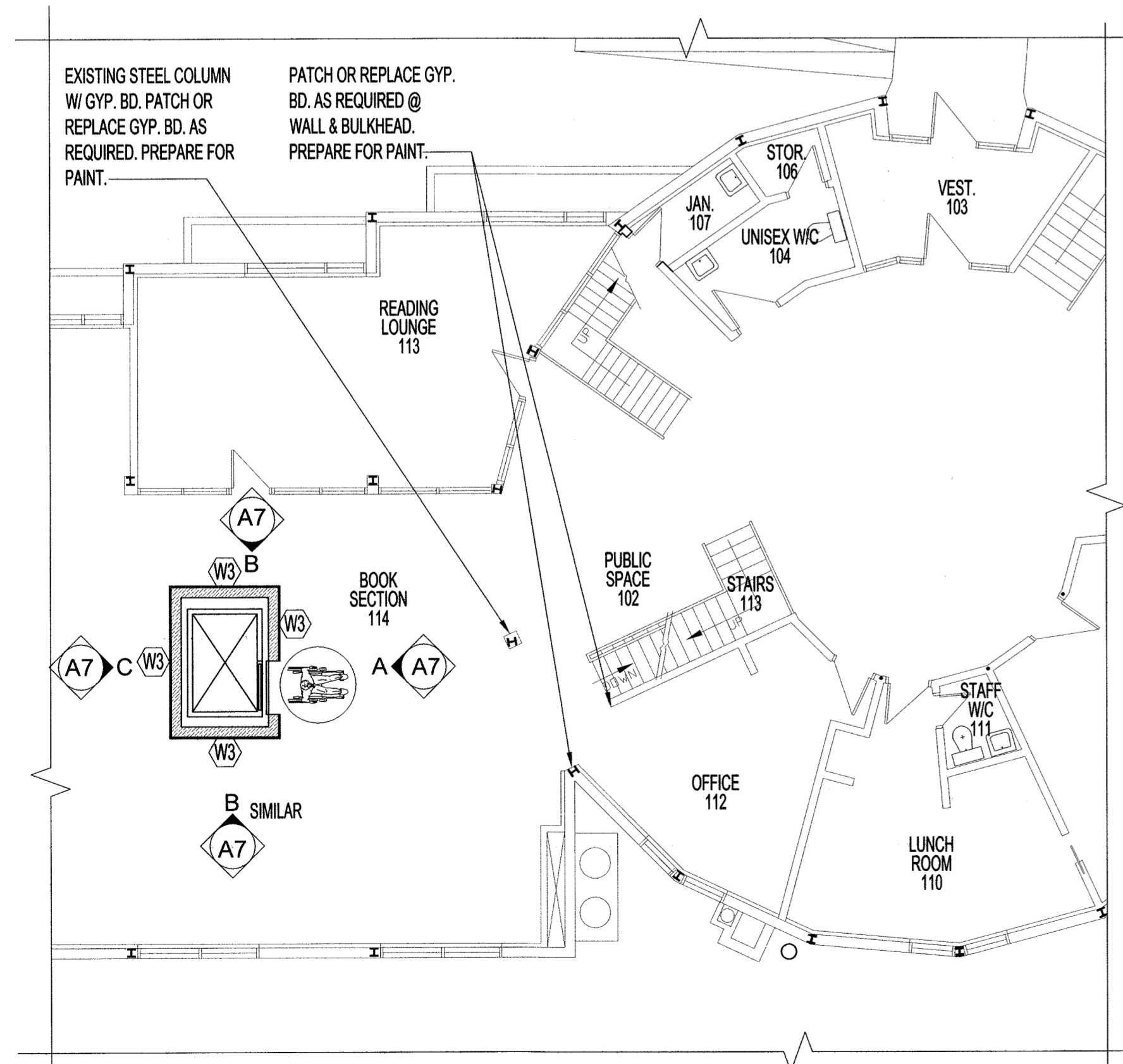
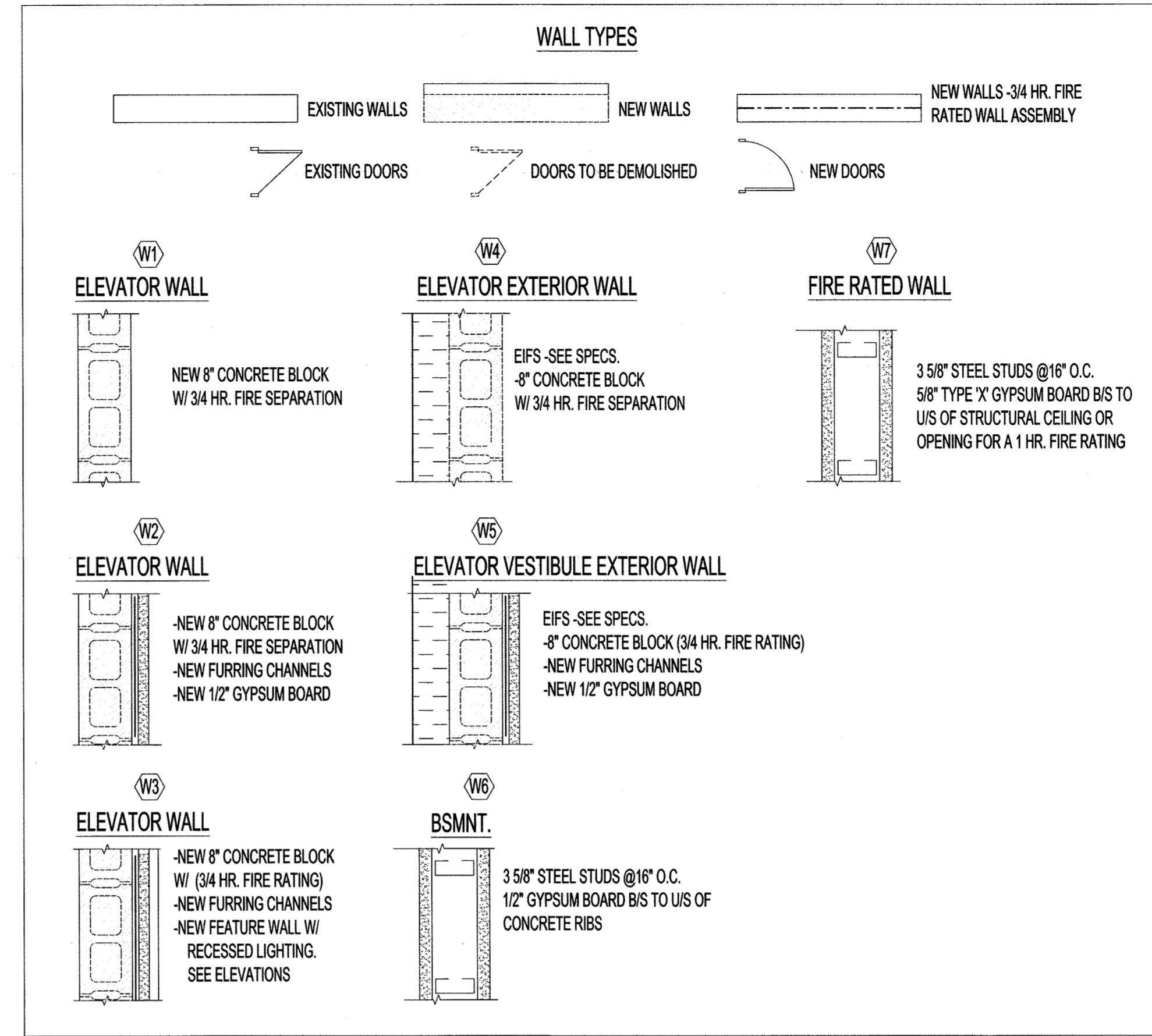
NOTES:

SEE SPECS FOR EIFS WALL SYSTEMS. WALL SYSTEM TO BE INSTALLED ACCORDING TO SPECIFICATIONS OUTLINED AND MANUFACTURERS RECOMMENDATIONS.

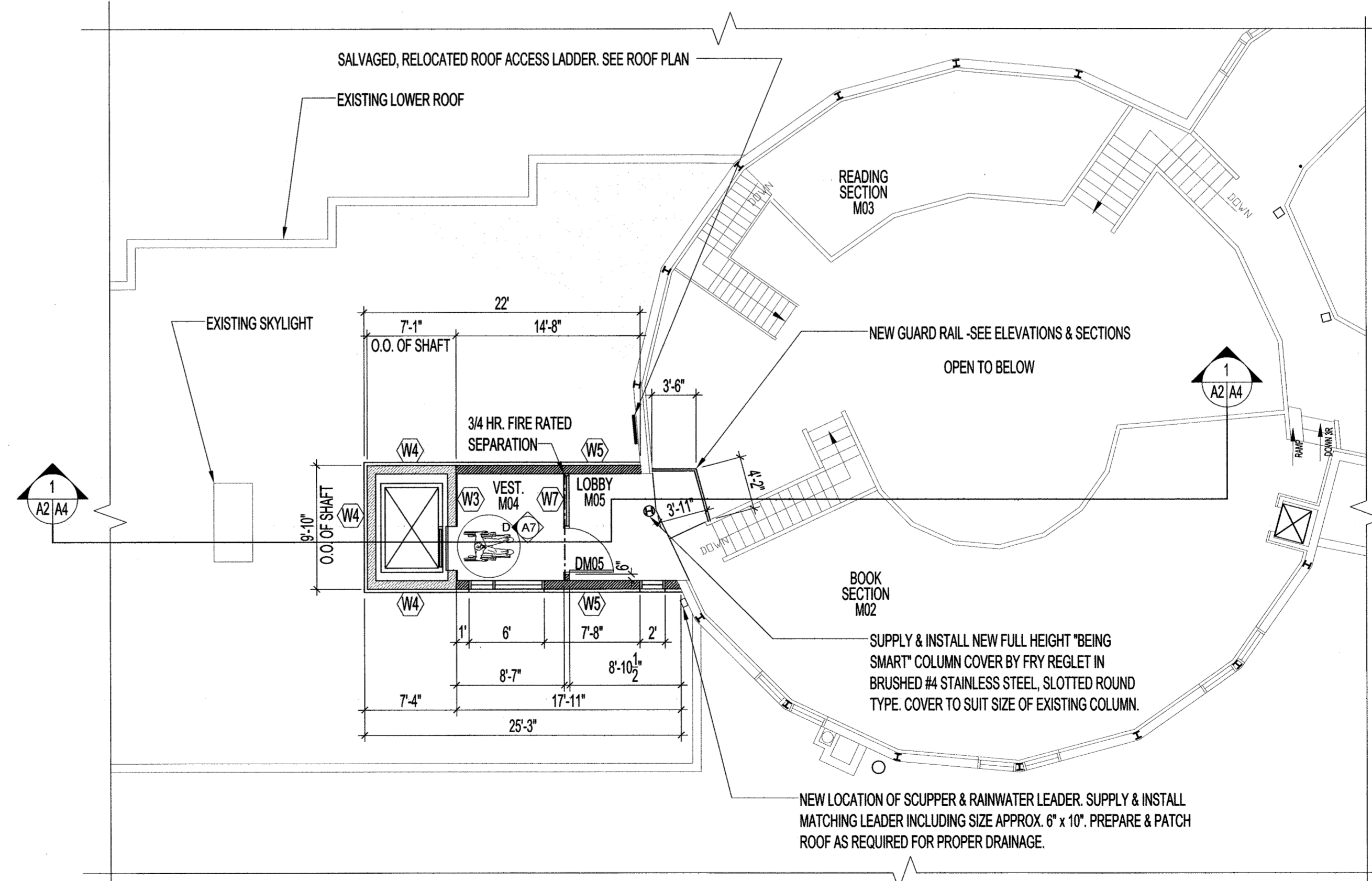


1 BASEMENT PLAN -RENOVATION
SCALE 1/4" = 1'-0"

(2) AUTOMATIC DOOR ACTUATION SWITCH, 36" VERTICAL ALUMINIUM COLUMN OF TOUCH ACTIVATION 'THE INGRESS'. INSTALLED 4" FROM FINISHED FLOOR.

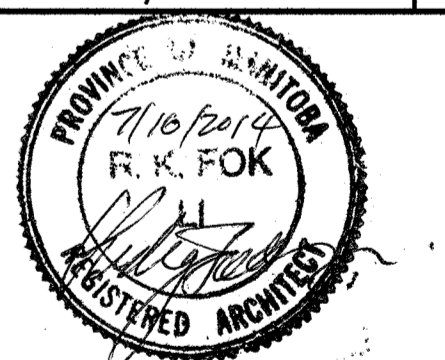


1 MAIN FLOOR PLAN -RENOVATION
SCALE 1/4" = 1'-0"



1 MEZZANINE FLOOR PLAN -RENOVATION
SCALE 1/4" = 1'-0"

No.	REVISION/DESCRIPTION	BY	DATE
SEAL			



DRAWN	CHKD	DESIGNED	APPROVED
DATE 2014.07.11	USER APPROVAL		

THE CITY OF WINNIPEG
PLANNING, PROPERTY AND
DEVELOPMENT DEPARTMENT
MUNICIPAL ACCOMMODATIONS DIVISION
3-65 GARRY STREET, R3C 4K4

PROJECT
**ST. VITAL LIBRARY
NEW ELEVATOR INSTALLATION**

6 FERMOR AVENUE
SHEET TITLE

PARTIAL BASEMENT, MAIN
& MEZZANINE FLOOR PLANS
-RENOVATION

SCALE	PROJECT No:	SHEET No:
AS SHOWN		A2