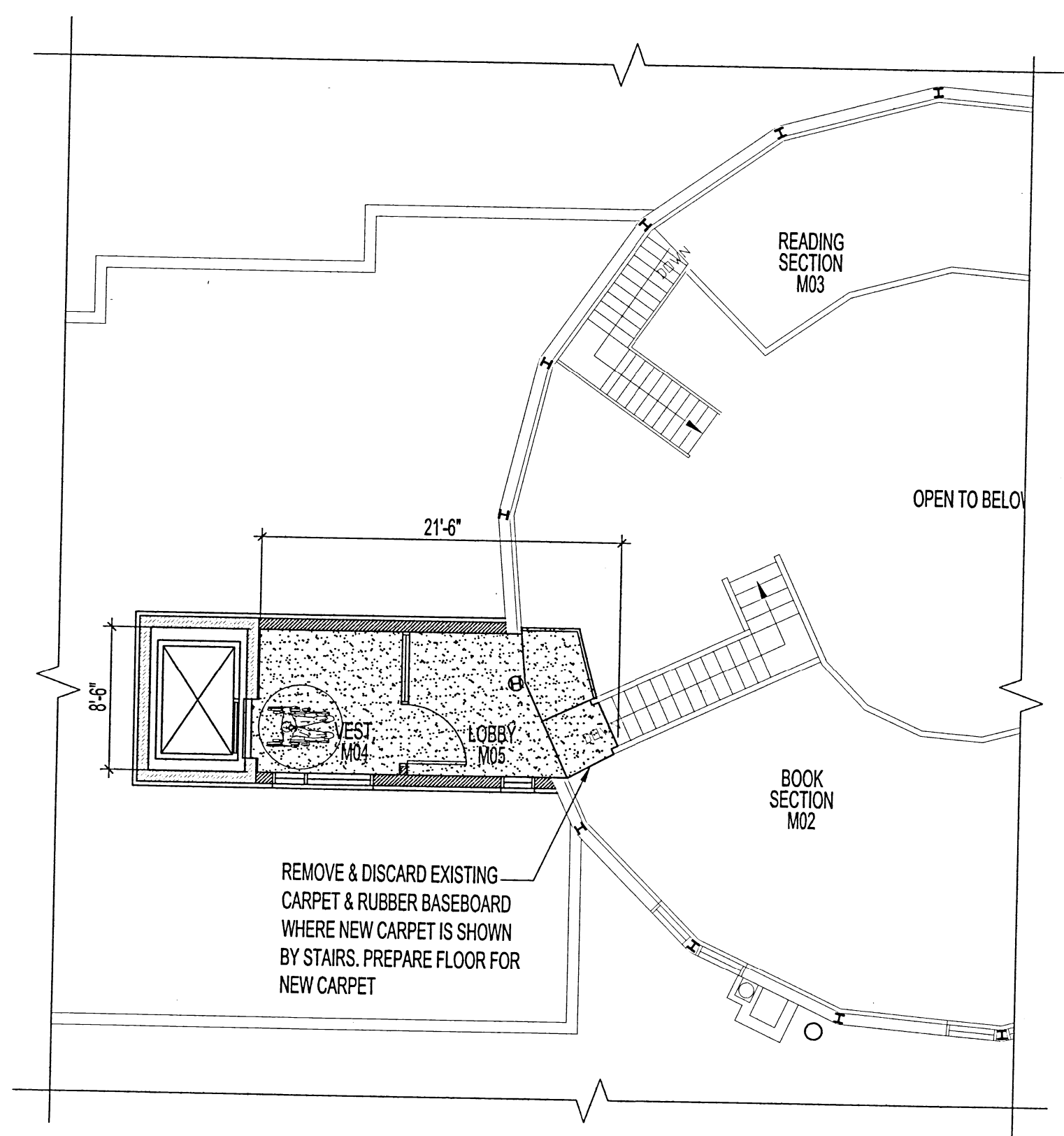


1 MAIN FLOOR FINISH PLAN
SCALE 1/4" = 1'-0"



2 MEZZANINE FLOOR FINISH PLAN
SCALE 1/4" = 1'-0"

FLOOR FINISH
NOTE: SUPPLY & INSTALL NEW TRANSITION STRIPS BETWEEN NEW & EXISTING CARPETING

NEW 24" x 24" CARPET TILES BY J + J FLOORING GROUP, KINETIX TEXTILE COMPOSITE FLOORING W/ QUARTER TURN INSTALLATION, FREE LAY, NO GLUE. COLOUR & SELECTION TO BE DETERMINED BY CONTRACT ADMINISTRATOR

RUBBER BASEBOARD:
JOHNSONITE 4" HEIGHT COLOUR BLACK CB40

ROOM NO.	ROOM NAME	FLOOR	BASEBOARD	NORTH WALL	SOUTH WALL	EAST WALL	WEST WALL	CEILING	CEILING HEIGHT	NOTES
9-12	EXHIBIT SPACE	EXIST	4" R.B.B. (SOUTH WALL ONLY)		PT.					
9-17	STORAGE							EXIST		
9-19	MISC.		4" R.B.B. (WEST WALLS ONLY)							
9-20	CONTROL CLOSET		4" R.B.B.	PT.	PT.	PT.	PT.			
9-21	ELEVATOR ENTRANCE		4" R.B.B.	PT.	PT.	PT.	PT.			
9-22	MISC. STORAGE		4" R.B.B.	PT.						
102	PUBLIC SPACE	CP. T.	4" R.B.B. (SOUTH WALL ONLY)		PT.					
114	BOOK SECTION	CP. T.	4" R.B.B. - SEE NOTES	PT.				EXIST WOOD NEW GYP. BD	EXIST 11'-11" NEW 8'-7"	PAINT NEW BULKHEADS & US OF NEW BALCONY
M04	VESTIBULE	CP. T.	4" R.B.B.	PT.	PT.	PT.	PT.	AC. T.	9'-5"	ELEVATOR EXTERIOR HAS SPECIAL PANEL FINISHES - SEE AT 4" R.B.B. @ NEW CARPET AREAS & AROUND ELEVATOR ENCLOSURE.
M05	LOBBY	CP. T.						AC. T.	9'-5"	PAINT NEW BULKHEADS OUTSIDE OF LOBBY @ STAIRS

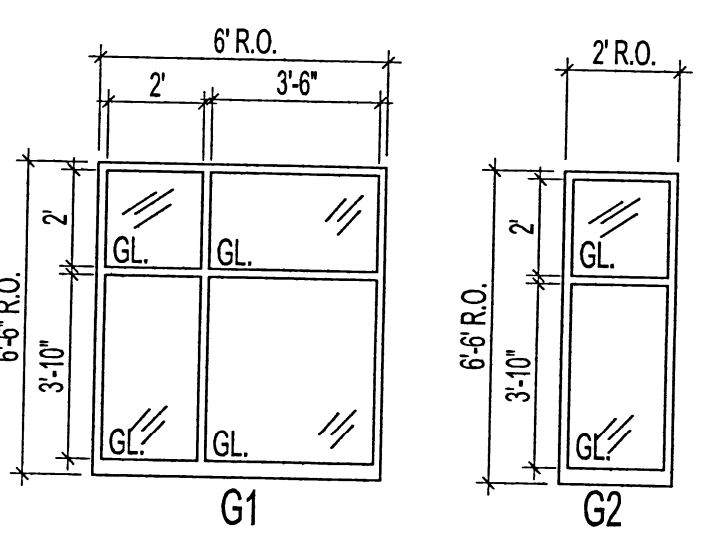
ABBREVIATIONS
ACT. ACOUSTIC TILE CP. T. - 2" CARPET TILE PT. - PAINT GYP. BD. - GYPSUM BOARD R.B.B. - 4" RUBBER BASEBOARD

DOOR NO.	DOOR				FRAME			RATING	HARDWARE GROUP	NOTES
	TYPE	WIDTH	HEIGHT	THICK	TYPE	MAT'L	FINISH			
DB20	D1	3'-0"	7'-0"	1 3/4"	HM	PT	F1 PS PT		1	
DB21A	EXISTING DOOR PAIR	RELOCATED			PT					SALVAGED DOORS, FRAME & HARDWARE
DB21B	D2	3'-6"	7'-0"	1 3/4"	HM	PT	F1 PS PT		2	
DM05	D3	3'-6"	7'-0"	1 3/4"	HM	PT	F2 PS PT	3/4HR	3	

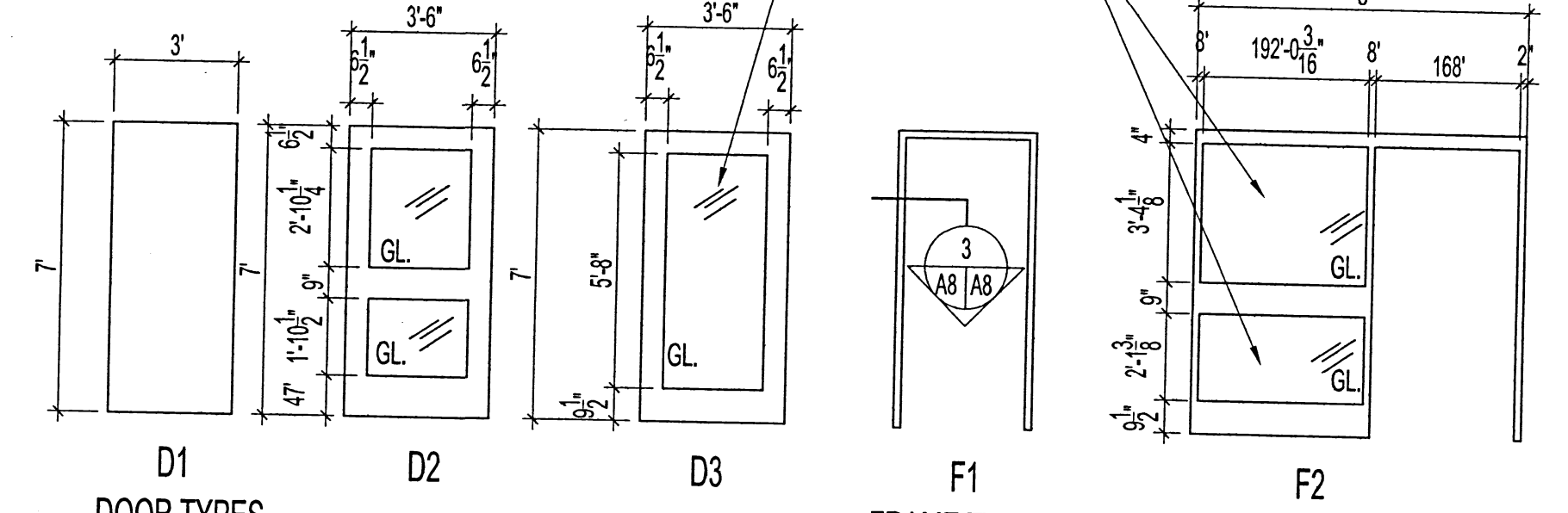
ABBREVIATIONS
HM - HOLLOW METAL PS - PRESSED STEEL PT. - PAINT

- HARDWARE GROUPS**
- GROUP #1**
- 1 1/2 PR. MCKINNEY TA 714 STEEL HINGES 4 1/2" x 4"
- SCHLAGE JUNIPER LEVER HANDLES 626 FINISH
- SCHLAGE STORAGE LOCK S80PD F86
- GROUP #2**
- 2 PR. MCKINNEY TA 714 STEEL HINGES 4 1/2" x 4"
- PASSAGE SET LEVER HANDLES 626 FINISH
- AUTOMATIC POWER DOOR OPERATOR (LOW-ENERGY DOOR OPERATOR) LCN 4631 & 4642, 695.
- KICKPLATES STANDARD METAL MFG. B/S K12A 12" x 40" 32D
- FLOOR STOP RICHELIEU 471-175 626 FINISH (CONCRETE FLOORS)
- GROUP #3**
- PASSAGE SET LEVER HANDLES 626 FINISH
- LOW ENERGY POWER DOOR OPERATOR, NORTON ASSA-ABLOY MODEL 6910, HES 5000 SERIES
- ELECTRIC STRIKE FIELD SET TO FAIL-SAFE, 630 SATIN STAINLESS STEEL FINISH, & WHEELCHAIR SYMBOL, ACUVISION SENSOR SYSTEM
- KICKPLATES STANDARD METAL MFG. B/S K12A 12" x 40" 40D
- FLOOR STOP RICHELIEU 471-175 626 FINISH (CONCRETE FLOORS)
- SMOKE SEAL K.N. CROWDER INC. W21 BLACK
- DOOR SWEEP K.N. CROWDER INC. W13S 42"

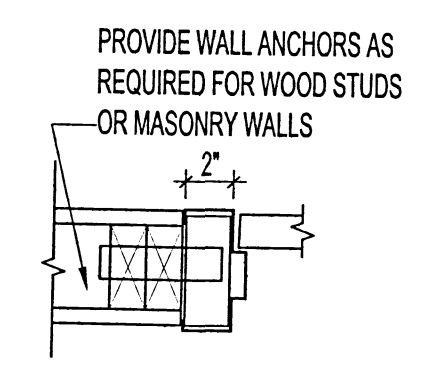
WINDOWS G1 & G2
ALL WINDOW UNITS ARE FROM SILEX FIBERGLAS WINDOWS, 2100 SERIES FIXED GLAZING PANELS, DOUBLE PANE, & WHITE FINISH.



FIXED GLAZING UNITS
WINDOW TYPES SCALE: 1/4" = 1'-0"



DOOR TYPES SCALE: 1/4" = 1'-0"
FRAME TYPES



3 DOOR JAMB DETAIL
SCALE: 1 1/2" = 1'-0"

5mm CLEAR PYRAN PLATINUM CERAMIC-F GLAZING W/ 45 MIN. FIRE RATING

No.	REVISION/DESCRIPTION	BY	DATE
SEAL			



DRAWN	CHECKED	DESIGNED	APPROVED
MMK			

DATE 2014.09.05
USER APPROVAL

THE CITY OF WINNIPEG
PLANNING, PROPERTY AND DEVELOPMENT DEPARTMENT
MUNICIPAL ACCOMMODATIONS DIVISION
3-65 GARRY STREET, R3C 4K4

PROJECT
ST. VITAL LIBRARY
NEW ELEVATOR INSTALLATION

6 FERMOR AVENUE
SHEET TITLE

PARTIAL MAIN & MEZZANINE FLOOR PLANS
FLOOR FINISHES - DEMO. & RENO.
DOOR & ROOM SCHEDULES