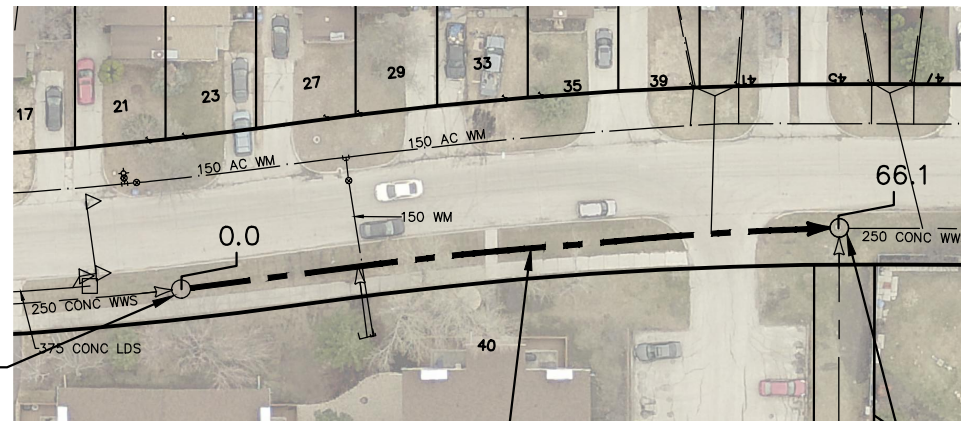


SPARROW ROAD



SEWER JUNCTION INFORMATION FROM SEWER VIDEO INSPECTION		
SEWER ID S-MA60001302		
DISTANCE FROM MH ID S-MH60000944		
DISTANCE	DIAMETER	CLOCK
15.2	150	9
18.3	150	2
34.0	150	9
52.7	150	10



S-MH60000944
RIM 237.38
INV S 233.95
INV N 233.95

66.1 OF 250 WWS TO BE LINED
S-MA60001302.
(PARTIALLY DETERIORATED)

S-MH60000943
RIM 237.64
INV S 233.21
INV N 233.36
INV W 233.21

WARNING

IF POWER EQUIPMENT OR EXPLOSIVES ARE TO BE USED FOR EXCAVATION ON THIS PROJECT THE CONTRACTOR MUST:

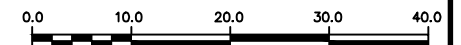
- 1) NOTIFY THE GAS COMPANY OF THE PROPOSED LOCATION OF EXCAVATION.
- 2) TAKE PRECAUTION TO AVOID DAMAGE TO GAS COMPANY INSTALLATIONS.

SEE PROVINCIAL REGULATION 210/72 FOR DETAILS

FOR INDEX SEE
11697

METRIC

WHOLE NUMBERS INDICATE MILLIMETRES
DECIMALIZED NUMBERS INDICATE METRES



LOCATION APPROVED UNDERGROUND STRUCTURES

SUPV. U/G STRUCTURES COMMITTEE DATE

NOTE:

LOCATION OF UNDERGROUND STRUCTURES AS SHOWN ARE BASED ON THE BEST INFORMATION AVAILABLE BUT NO GUARANTEE IS GIVEN THAT ALL EXISTING UTILITIES ARE SHOWN OR THAT THE GIVEN LOCATIONS ARE EXACT. CONFIRMATION OF EXISTENCE AND EXACT LOCATION OF ALL SERVICES MUST BE OBTAINED FROM THE INDIVIDUAL UTILITIES BEFORE PROCEEDING WITH CONSTRUCTION.

B.M. ELEV.			
NO.	REVISIONS	DATE	BY

DESIGNED BY	SC	CHECKED BY	SC
DRAWN BY	RS	APPROVED BY	KZ
SCALE:	1:750	RELEASED FOR CONSTRUCTION	K.ZUREK
HORIZONTAL		DATE	
VERTICAL	DATE	2018 05 16	

ENGINEER'S SEAL
ORIGINAL SIGNED BY S.R.J COURNOYER 18/05/14
CONSULTANT DRAWING NUMBER
-

THE CITY OF WINNIPEG
WATER AND WASTE DEPARTMENT
ENGINEERING DIVISION

2017 SEWER MAIN RENEWALS
BY CIPP LINING

SPARROW ROAD

2ND MH S OF ROBLIN BOULEVARD TO
3RD MH S OF ROBLIN BOULEVARD

SHEET 43 OF 53

CITY DRAWING NUMBER

11737

PLOT DATE: 2018 05 16

BID OPPORTUNITY: 112-2018
CONTRACT NUMBER: 5

FILE PATH: R:\DRAWINGS\SEWER\2017 RENEWALS\CIPP-FSR-EPR\Cont. 5\CONSTRUCTION DWGS\
FILE NAME: SPARROW.dwg