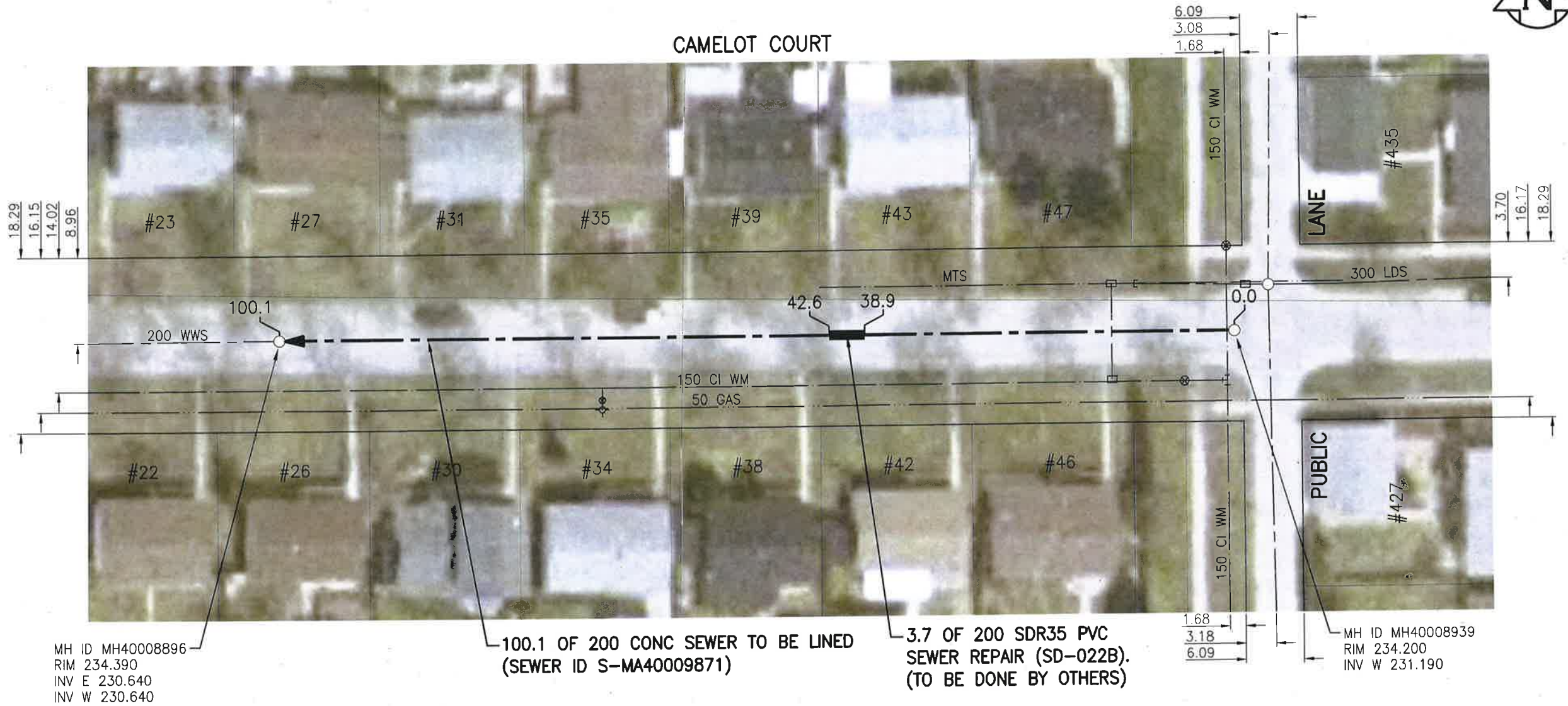


SEWER JUNCTION INFORMATION FROM SEWER VIDEO INSPECTION

SEWER ID S-MA40009871		
DISTANCE FROM MH40008939		
DISTANCE	DIAMETER	CLOCK
19.4	150	3
20.7	150	9
35.4	150	2
36.7	150	9
51.4	150	3
59.3	150	9
66.2	150	9
66.7	150	9
67.4	150	3
68.0	150	3
69.8	150	10
83.4	150	2
83.8	150	10
84.6	150	9
96.8	150	2
98.1	150	9



MH ID MH40008896
RIM 234.390
INV E 230.640
INV W 230.640

100.1 OF 200 CONC SEWER TO BE LINED
(SEWER ID S-MA40009871)

3.7 OF 200 SDR35 PVC
SEWER REPAIR (SD-022B).
(TO BE DONE BY OTHERS)

MH ID MH40008939
RIM 234.200
INV W 231.190

WARNING

IF POWER EQUIPMENT OR EXPLOSIVES ARE TO BE USED FOR EXCAVATION ON THIS PROJECT THE CONTRACTOR MUST:
1) NOTIFY THE GAS COMPANY OF THE PROPOSED LOCATION OF EXCAVATION.
2) TAKE PRECAUTION TO AVOID DAMAGE TO GAS COMPANY INSTALLATIONS.
SEE PROVINCIAL REGULATION 140/92 FOR DETAILS

**ENGINEERS
GEOSCIENTISTS
MANITOBA**
Certificate of Authorization
Stantec Consulting Ltd.
No. 1301

METRIC
WHOLE NUMBERS INDICATE MILLIMETRES
DECIMALIZED NUMBERS INDICATE METRES

1:500

BID OPPORTUNITY NO. 1167-2018

LOCATION APPROVED UNDERGROUND STRUCTURES

SUPV. U/G STRUCTURES COMMITTEE	DATE

NOTE:
LOCATION OF UNDERGROUND STRUCTURES AS SHOWN ARE BASED ON THE BEST INFORMATION AVAILABLE BUT NO GUARANTEE IS GIVEN THAT ALL EXISTING UTILITIES ARE SHOWN OR THAT THE GIVEN LOCATIONS ARE EXACT. CONFIRMATION OF EXISTENCE AND EXACT LOCATION OF ALL SERVICES MUST BE OBTAINED FROM THE INDIVIDUAL UTILITIES BEFORE PROCEEDING WITH CONSTRUCTION.

NO.	REVISIONS	DATE	BY
1	ISSUED FOR TENDER	19.01.02	RS

Stantec
905 Waverley Street, Winnipeg, Manitoba
Tel 204-489-5900 Fax 204-453-9012

DESIGNED BY RS	CHECKED BY RS
DRAWN BY SC	APPROVED BY RS
HOR. SCALE: 1:500	RELEASED FOR CONSTRUCTION:
VERTICAL:	DATE <i>18/10/29</i>

ENGINEER'S SEAL
**PROVINCE OF MANITOBA
REGISTERED PROFESSIONAL ENGINEER**
JAN 2/19
R.M. SHERLOCK
MEMBER 24045
CONSULTANT DRAWING NO. C-106

Winnipeg THE CITY OF WINNIPEG WATER AND WASTE DEPARTMENT

2018 SEWER RENEWALS BY CIPP LINING
CONTRACT 7

CAMELOT COURT
1ST MH W OF REDONDA ST TO
2ND MH W OF REDONDA ST

SHEET OF 07 OF 48
CAD FILE DRAWING NUMBER 18120c-101-922.dwg
CITY DRAWING NUMBER 11842

V:\1112\active\111218120\0300_drawing\0302_sheet_files\02_civil\18120c-101-922.dwg