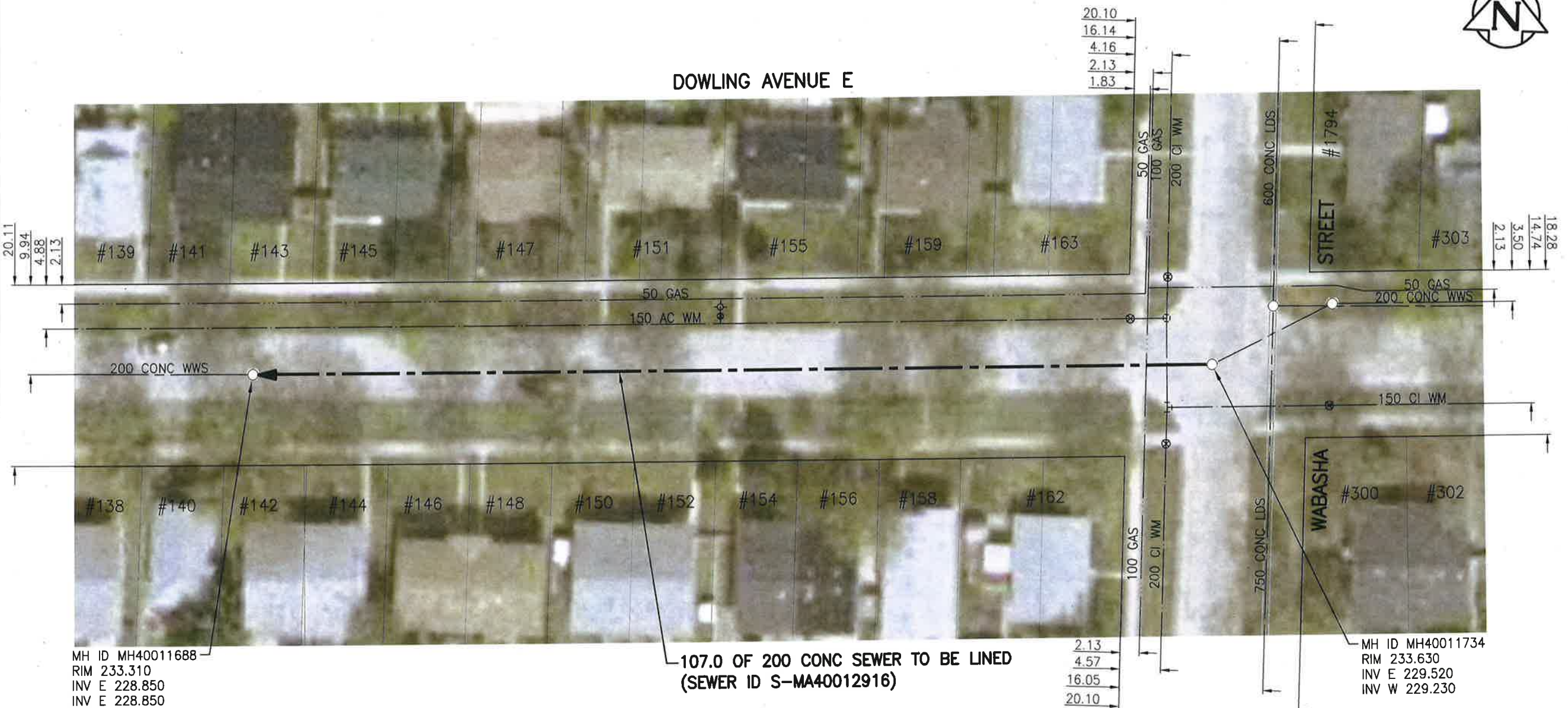


SEWER JUNCTION INFORMATION FROM SEWER VIDEO INSPECTION

SEWER ID S-MA40012916		
DISTANCE FROM MH40011734		
DISTANCE	DIAMETER	CLOCK
15.4	150	2
18.4	150	11
28.4	150	12
32.3	150	10
46.8	150	2
47.7	150	11
48.5	150	12
56.9	150	12
65.6	150	2
66.1	150	10
67.7	150	12
81.4	150	1
83.0	50	10
86.0	150	12
96.8	150	2
101.4	150	12



**WARNING**

IF POWER EQUIPMENT OR EXPLOSIVES ARE TO BE USED FOR EXCAVATION ON THIS PROJECT THE CONTRACTOR MUST:  
 1) NOTIFY THE GAS COMPANY OF THE PROPOSED LOCATION OF EXCAVATION.  
 2) TAKE PRECAUTION TO AVOID DAMAGE TO GAS COMPANY INSTALLATIONS.  
 SEE PROVINCIAL REGULATION 140/92 FOR DETAILS

**ENGINEERS GEOSCIENTISTS MANITOBA**  
 Certificate of Authorization  
 Stantec Consulting Ltd.  
 No. 1301

**METRIC**  
 WHOLE NUMBERS INDICATE MILLIMETRES  
 DECIMALIZED NUMBERS INDICATE METRES  
  
 1:500  
 BID OPPORTUNITY NO. 1167-2018

**LOCATION APPROVED UNDERGROUND STRUCTURES**

SUPV. U/G STRUCTURES COMMITTEE	DATE

NOTE:  
 LOCATION OF UNDERGROUND STRUCTURES AS SHOWN ARE BASED ON THE BEST INFORMATION AVAILABLE BUT NO GUARANTEE IS GIVEN THAT ALL EXISTING UTILITIES ARE SHOWN OR THAT THE GIVEN LOCATIONS ARE EXACT. CONFIRMATION OF EXISTENCE AND EXACT LOCATION OF ALL SERVICES MUST BE OBTAINED FROM THE INDIVIDUAL UTILITIES BEFORE PROCEEDING WITH CONSTRUCTION.

B.M.	ELEV.

NO.	REVISIONS	DATE	BY
1	ISSUED FOR TENDER	19.01.02	RS

**Stantec**  
 905 Waverley Street, Winnipeg, Manitoba  
 Tel 204-489-5900 Fax 204-453-9012

DESIGNED BY	RS	CHECKED BY	RS
DRAWN BY	SC	APPROVED BY	RS
HOR. SCALE:	1:500	RELEASED FOR CONSTRUCTION:	
VERTICAL:		DATE	20/02/19

DATE 18.10.29

ENGINEER'S SEAL  
  
 CONSULTANT DRAWING NO. C-109

**THE CITY OF WINNIPEG**  
 WATER AND WASTE DEPARTMENT

2018 SEWER RENEWALS BY CIPP LINING  
 CONTRACT 7  
**DOWLING AVENUE E**  
 MH AT WABASHA ST TO  
 1ST MH W OF WABASHA ST

SHEET	OF
10	48
CAD FILE DRAWING NUMBER	
18120c-101-922.dwg	
CITY DRAWING NUMBER	
11845	

V:\1112\active\111218120\0300\_drawing\0302\_sheet\_files\02\_civil\18120c-101-922.dwg