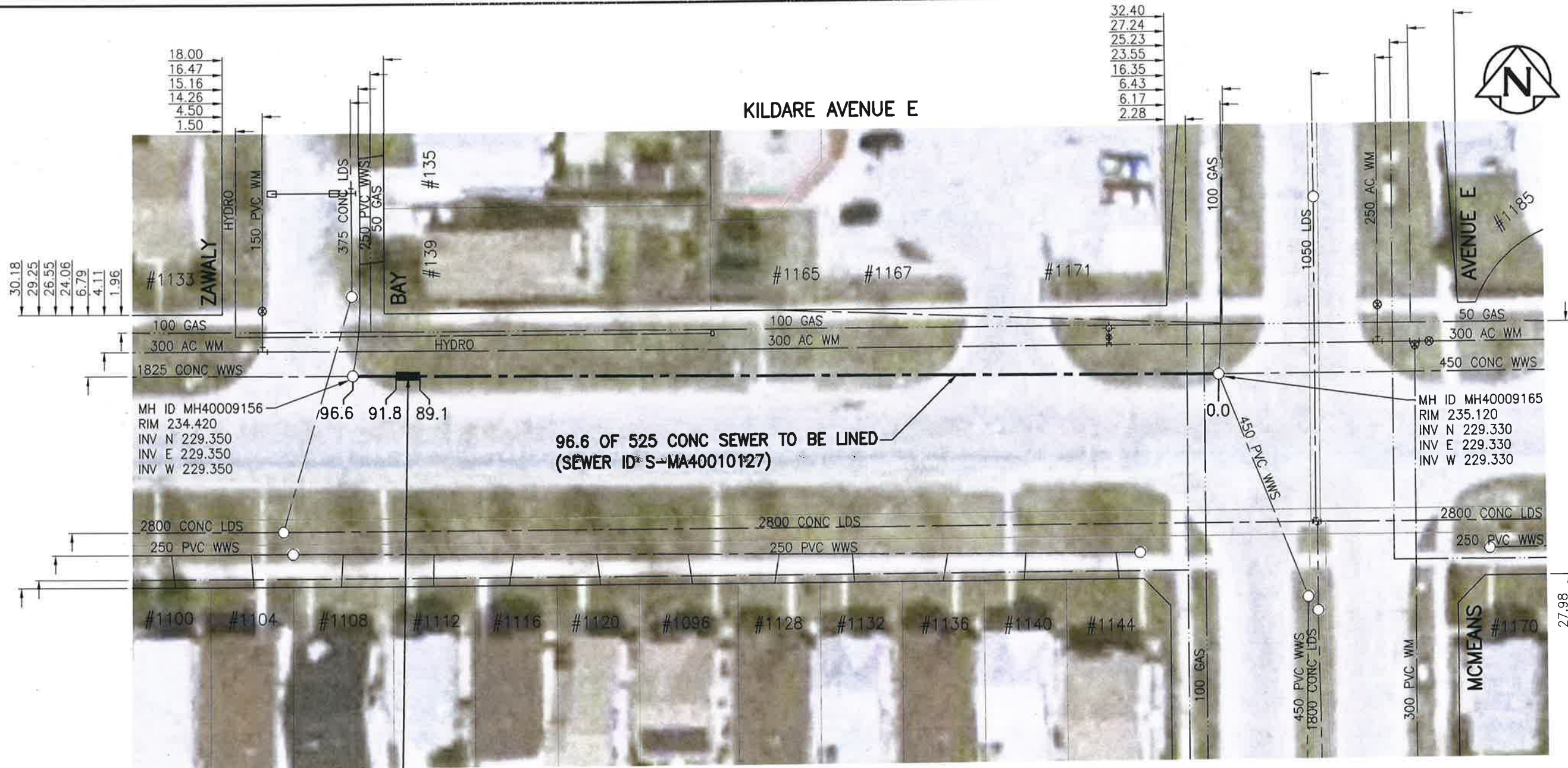


SEWER JUNCTION INFORMATION FROM SEWER VIDEO INSPECTION

SEWER ID S-MA40010127		
DISTANCE FROM MH40009165		
DISTANCE	DIAMETER	CLOCK
48.9	150	12



WARNING

IF POWER EQUIPMENT OR EXPLOSIVES ARE TO BE USED FOR EXCAVATION ON THIS PROJECT THE CONTRACTOR MUST:
 1) NOTIFY THE GAS COMPANY OF THE PROPOSED LOCATION OF EXCAVATION.
 2) TAKE PRECAUTION TO AVOID DAMAGE TO GAS COMPANY INSTALLATIONS.
 SEE PROVINCIAL REGULATION 140/92 FOR DETAILS

2.7 OF 525 SDR35 PVC SEWER REPAIR (SD-022A). (TO BE DONE BY OTHERS)

96.6 OF 525 CONC SEWER TO BE LINED (SEWER ID S-MA40010127)

ENGINEERS GEOSCIENTISTS MANITOBA
 Certificate of Authorization
 Stantec Consulting Ltd.
 No. 1301

METRIC
 WHOLE NUMBERS INDICATE MILLIMETRES
 DECIMALIZED NUMBERS INDICATE METRES
 1:500
 BID OPPORTUNITY NO. 1167-2018

LOCATION APPROVED UNDERGROUND STRUCTURES

SUPV. U/G STRUCTURES COMMITTEE DATE

NOTE:
 LOCATION OF UNDERGROUND STRUCTURES AS SHOWN ARE BASED ON THE BEST INFORMATION AVAILABLE BUT NO GUARANTEE IS GIVEN THAT ALL EXISTING UTILITIES ARE SHOWN OR THAT THE GIVEN LOCATIONS ARE EXACT. CONFIRMATION OF EXISTENCE AND EXACT LOCATION OF ALL SERVICES MUST BE OBTAINED FROM THE INDIVIDUAL UTILITIES BEFORE PROCEEDING WITH CONSTRUCTION.

NO.	REVISIONS	DATE	BY
1	ISSUED FOR TENDER	19.01.02	RS

Stantec
 905 Waverley Street, Winnipeg, Manitoba
 Tel 204-489-5900 Fax 204-453-9012

DESIGNED BY	RS	CHECKED BY	RS
DRAWN BY	SC	APPROVED BY	RS
HOR. SCALE:	1:500	RELEASED FOR CONSTRUCTION	
VERTICAL:			
DATE	18.10.29	DATE	02/02/19

ENGINEER'S SEAL

 CONSULTANT DRAWING NO. C-117

THE CITY OF WINNIPEG WATER AND WASTE DEPARTMENT

2018 SEWER RENEWALS BY CIPP LINING
 CONTRACT 7
KILDARE AVENUE E
 MH AT MCMEANS AVE E TO
 MH AT ZAWALY BAY E LEG

SHEET OF	18 OF 48
CAD FILE DRAWING NUMBER	18120c-III-922.dwg
CITY DRAWING NUMBER	11853

V:\112\active\11218120\0300_drawing\0302_sheet_files\02_civil\18120c-111-922.dwg