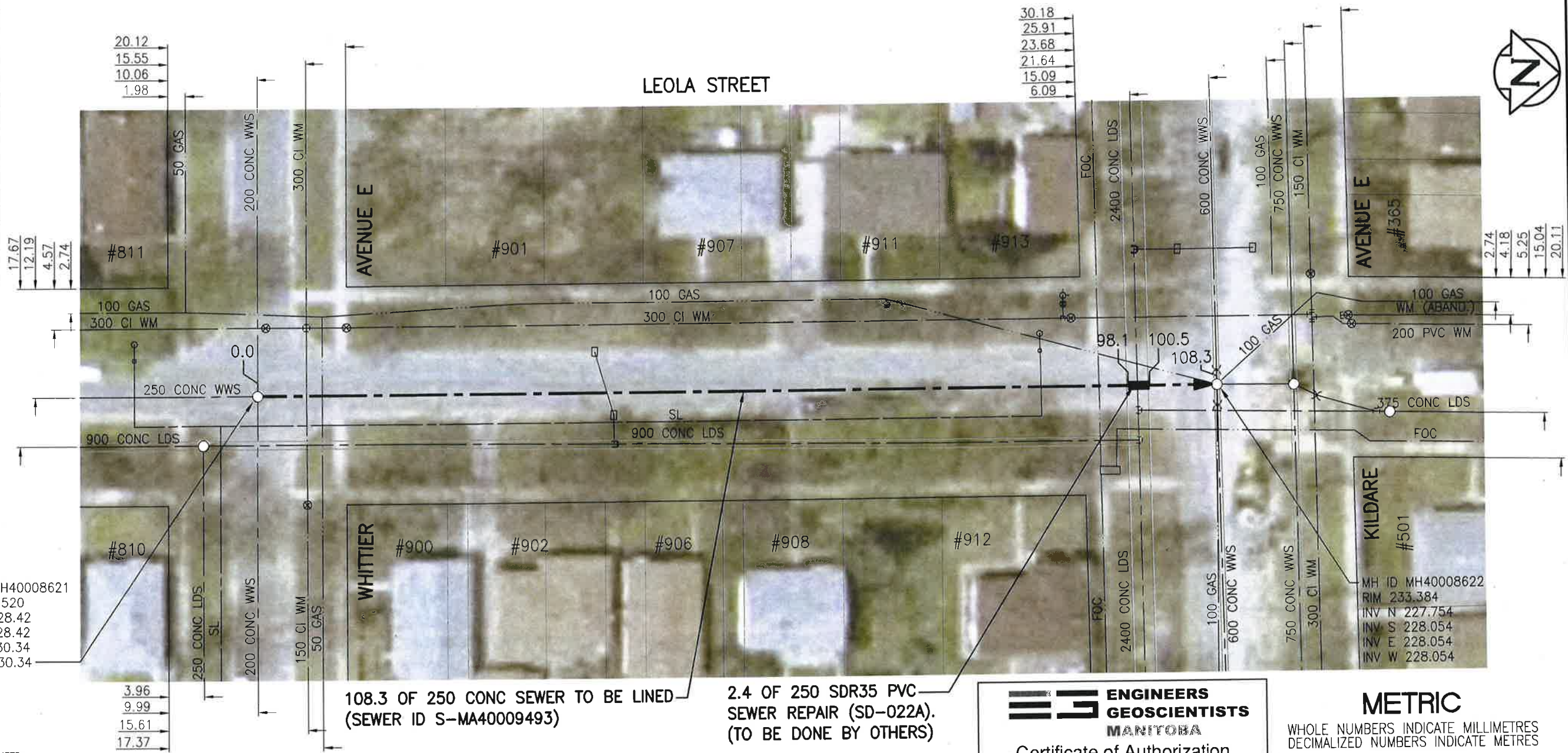


SEWER JUNCTION INFORMATION FROM SEWER VIDEO INSPECTION

SEWER ID S-MA40009493		
DISTANCE FROM MH40008621		
DISTANCE	DIAMETER	CLOCK
15.9	150	2
21.0	150	12
32.0	150	12
32.8	150	1
42.9	150	12
44.3	150	1
54.8	150	12
57.3	150	12
65.8	150	12
80.6	150	12
84.1	150	1
94.3	150	12



MH ID MH40008621  
RIM 233.520  
INV N 228.42  
INV S 228.42  
INV E 230.34  
INV W 230.34

MH ID MH40008622  
RIM 233.384  
INV N 227.754  
INV S 228.054  
INV E 228.054  
INV W 228.054

**WARNING**

IF POWER EQUIPMENT OR EXPLOSIVES ARE TO BE USED FOR EXCAVATION ON THIS PROJECT THE CONTRACTOR MUST:

- 1) NOTIFY THE GAS COMPANY OF THE PROPOSED LOCATION OF EXCAVATION.
  - 2) TAKE PRECAUTION TO AVOID DAMAGE TO GAS COMPANY INSTALLATIONS.
- SEE PROVINCIAL REGULATION 140/92 FOR DETAILS

108.3 OF 250 CONC SEWER TO BE LINED (SEWER ID S-MA40009493)

2.4 OF 250 SDR35 PVC SEWER REPAIR (SD-022A). (TO BE DONE BY OTHERS)

**ENGINEERS  
GEOSCIENTISTS  
MANITOBA**  
Certificate of Authorization  
Stantec Consulting Ltd.  
No. 1301

**METRIC**  
WHOLE NUMBERS INDICATE MILLIMETRES  
DECIMALIZED NUMBERS INDICATE METRES  
1:500  
0 5 15 25m  
BID OPPORTUNITY NO. 1167-2018

LOCATION APPROVED UNDERGROUND STRUCTURES

SUPV. U/G STRUCTURES COMMITTEE DATE

NOTE:  
LOCATION OF UNDERGROUND STRUCTURES AS SHOWN ARE BASED ON THE BEST INFORMATION AVAILABLE BUT NO GUARANTEE IS GIVEN THAT ALL EXISTING UTILITIES ARE SHOWN OR THAT THE GIVEN LOCATIONS ARE EXACT. CONFIRMATION OF EXISTENCE AND EXACT LOCATION OF ALL SERVICES MUST BE OBTAINED FROM THE INDIVIDUAL UTILITIES BEFORE PROCEEDING WITH CONSTRUCTION.

NO.	REVISIONS	DATE	BY
1	ISSUED FOR TENDER	19.01.02	RS

**Stantec**  
905 Waverley Street, Winnipeg, Manitoba  
Tel 204-489-5900 Fax 204-453-9012

DESIGNED BY	RS	CHECKED BY	RS
DRAWN BY	SC	APPROVED BY	RS
HOR. SCALE:	1:500	RELEASED FOR CONSTRUCTION	
VERTICAL:		DATE	21/10/19

ENGINEER'S SEAL  
PROVINCE OF MANITOBA  
R.M. SHERLOCK  
REGISTERED PROFESSIONAL ENGINEER  
MEMBER 24045  
CONSULTANT DRAWING NO. C-121

**THE CITY OF WINNIPEG**  
WATER AND WASTE DEPARTMENT

2018 SEWER RENEWALS BY CIPP LINING  
CONTRACT 7  
**LEOLA STREET**  
MH AT WHITTIER AVE E TO  
MH AT KILDARE AVE E

SHEET OF  
**22** OF **48**  
CAD FILE DRAWING NUMBER  
**18120c-121-922.dwg**  
CITY DRAWING NUMBER  
**11857**