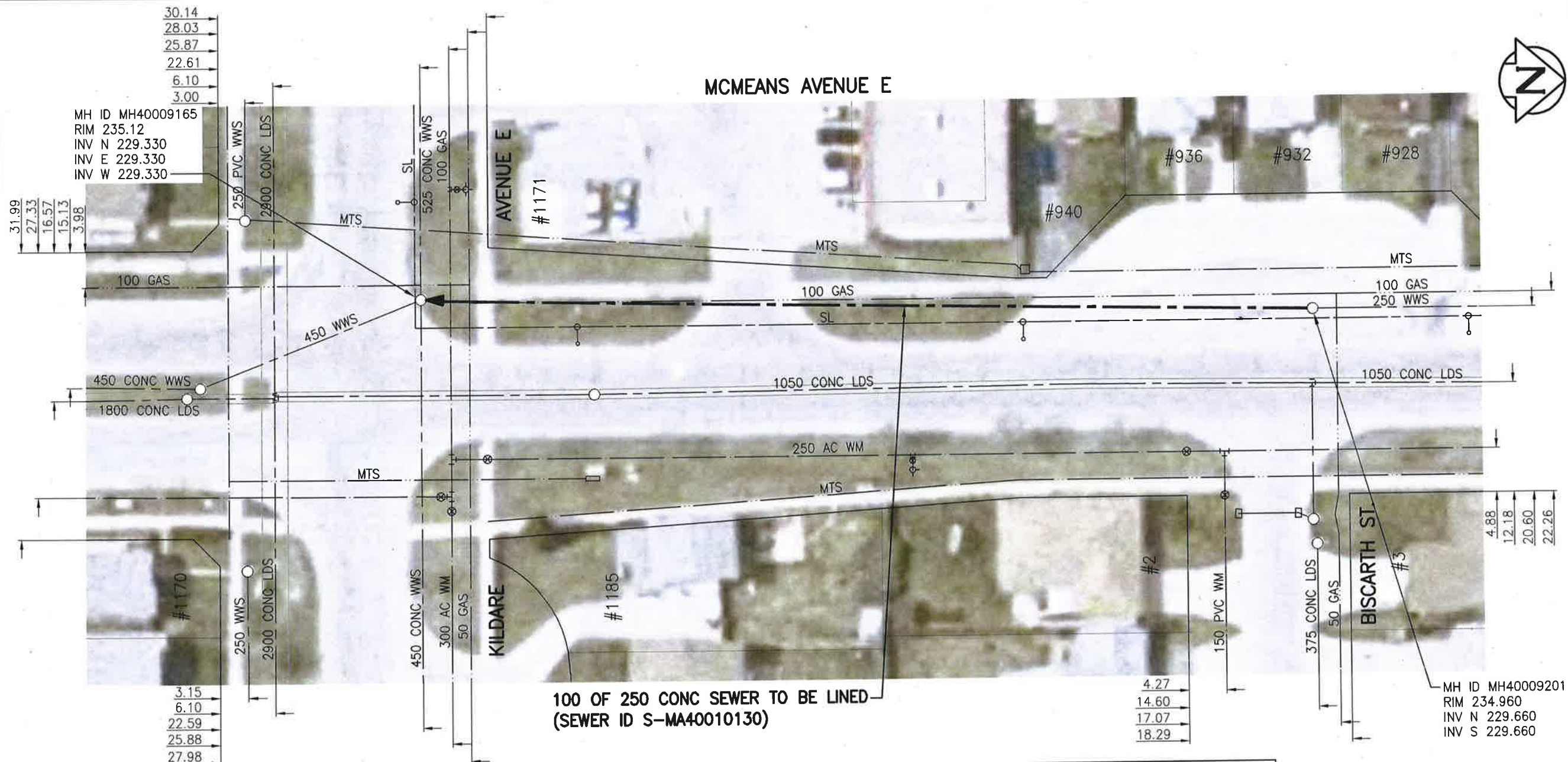


SEWER JUNCTION INFORMATION FROM SEWER VIDEO INSPECTION		
SEWER ID S-MA40010130		
DISTANCE FROM MH40009201		
DISTANCE	DIAMETER	CLOCK
18.7	150	12
20.6	150	12
41.6	150	12



MH ID MH40009165
RIM 235.12
INV N 229.330
INV E 229.330
INV W 229.330

MH ID MH40009201
RIM 234.960
INV N 229.660
INV S 229.660

100 OF 250 CONC SEWER TO BE LINED
(SEWER ID S-MA40010130)

WARNING

IF POWER EQUIPMENT OR EXPLOSIVES ARE TO BE USED FOR EXCAVATION ON THIS PROJECT THE CONTRACTOR MUST:
1) NOTIFY THE GAS COMPANY OF THE PROPOSED LOCATION OF EXCAVATION.
2) TAKE PRECAUTION TO AVOID DAMAGE TO GAS COMPANY INSTALLATIONS.
SEE PROVINCIAL REGULATION 140/92 FOR DETAILS

**ENGINEERS
GEOSCIENTISTS
MANITOBA**

Certificate of Authorization
Stantec Consulting Ltd.
No. 1301

METRIC
WHOLE NUMBERS INDICATE MILLIMETRES
DECIMALIZED NUMBERS INDICATE METRES

1:500

BID OPPORTUNITY NO. 1167-2018

LOCATION APPROVED UNDERGROUND STRUCTURES

SUPV. U/G STRUCTURES COMMITTEE	DATE

NOTE:
LOCATION OF UNDERGROUND STRUCTURES AS SHOWN ARE BASED ON THE BEST INFORMATION AVAILABLE BUT NO GUARANTEE IS GIVEN THAT ALL EXISTING UTILITIES ARE SHOWN OR THAT THE GIVEN LOCATIONS ARE EXACT. CONFIRMATION OF EXISTENCE AND EXACT LOCATION OF ALL SERVICES MUST BE OBTAINED FROM THE INDIVIDUAL UTILITIES BEFORE PROCEEDING WITH CONSTRUCTION.

NO.	REVISIONS	DATE	BY
1	ISSUED FOR TENDER	19.01.02	RS

Stantec
905 Waverley Street, Winnipeg, Manitoba
Tel 204-489-5900 Fax 204-453-9012

DESIGNED BY	RS	CHECKED BY	RS
DRAWN BY	SC	APPROVED BY	RS
HOR. SCALE:	1:500	RELEASED FOR CONSTRUCTION:	
VERTICAL:		DATE	20/02/19

ENGINEER'S SEAL

CONSULTANT DRAWING NO.
C-123

THE CITY OF WINNIPEG
WATER AND WASTE DEPARTMENT

2018 SEWER RENEWALS BY CIPP LINING
CONTRACT 7
MCMEANS AVENUE E WPL
MH AT BISCARTH ST TO
MH AT KILDARE AVE E

SHEET	24	OF	48
CAD FILE DRAWING NUMBER 18120c-121-922.dwg			
CITY DRAWING NUMBER 11859			

V:\112\active\11218120\0300_drawing\0302_sheet_files\02_civil\18120c-121-922.dwg