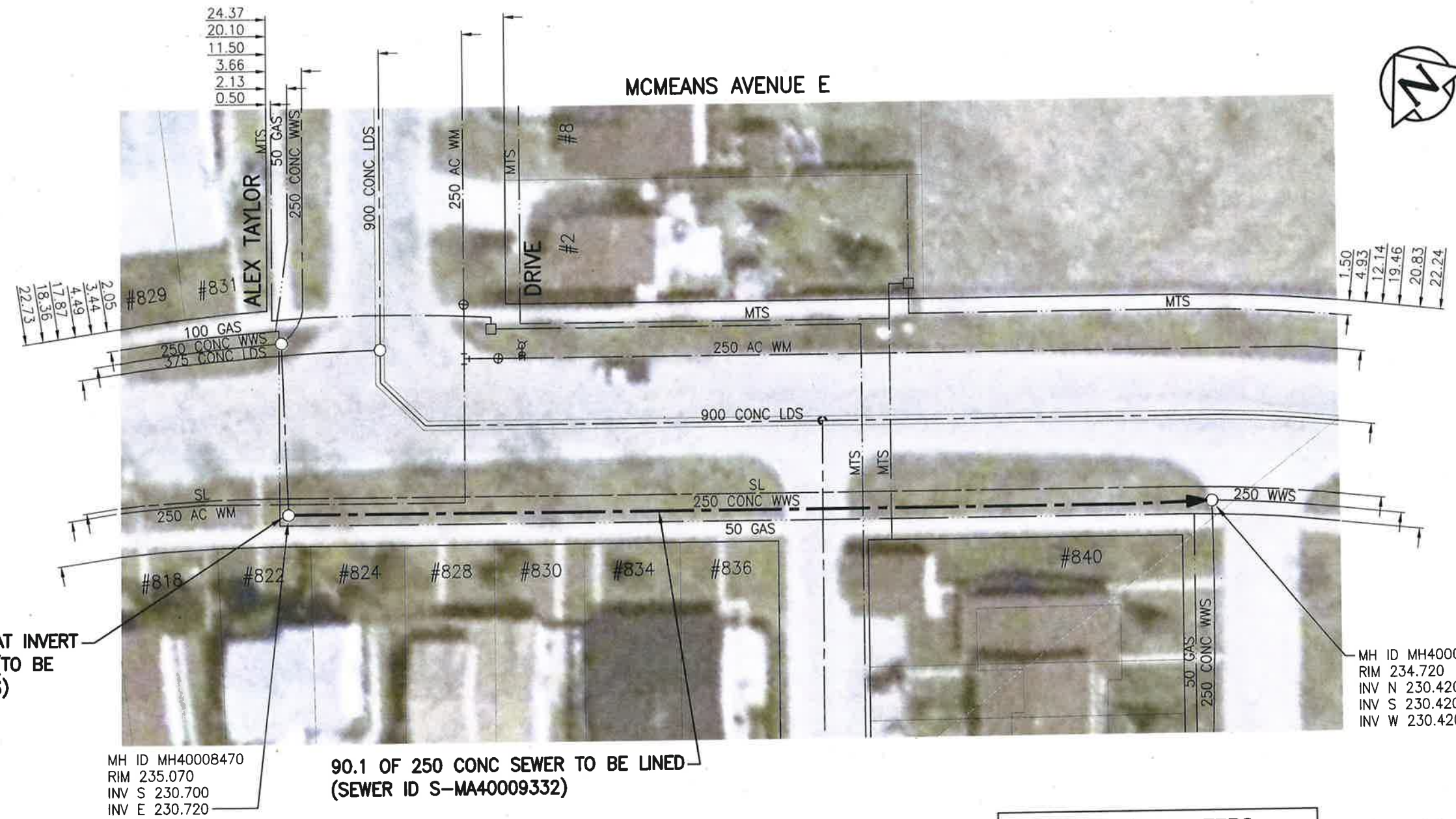


SEWER JUNCTION INFORMATION FROM SEWER VIDEO INSPECTION		
SEWER ID S-MA40009332		
DISTANCE FROM MH40008470		
DISTANCE	DIAMETER	CLOCK
2.7	150	2
19.6	150	2
42.3	150	2



STABILIZE HOLE AT INVERT BEFORE LINING. (TO BE DONE BY OTHERS)

MH ID MH40008470
RIM 235.070
INV S 230.700
INV E 230.720

90.1 OF 250 CONC SEWER TO BE LINED
(SEWER ID S-MA40009332)

MH ID MH40008474
RIM 234.720
INV N 230.420
INV S 230.420
INV W 230.420

WARNING

IF POWER EQUIPMENT OR EXPLOSIVES ARE TO BE USED FOR EXCAVATION ON THIS PROJECT THE CONTRACTOR MUST:
1) NOTIFY THE GAS COMPANY OF THE PROPOSED LOCATION OF EXCAVATION.
2) TAKE PRECAUTION TO AVOID DAMAGE TO GAS COMPANY INSTALLATIONS.
SEE PROVINCIAL REGULATION 140/92 FOR DETAILS

**ENGINEERS
GEOSCIENTISTS
MANITOBA**
Certificate of Authorization
Stantec Consulting Ltd.
No. 1301

METRIC
WHOLE NUMBERS INDICATE MILLIMETRES
DECIMALIZED NUMBERS INDICATE METRES
1:500
BID OPPORTUNITY NO. 1167-2018

LOCATION APPROVED UNDERGROUND STRUCTURES

SUPV. U/G STRUCTURES COMMITTEE	DATE

NOTE:
LOCATION OF UNDERGROUND STRUCTURES AS SHOWN ARE BASED ON THE BEST INFORMATION AVAILABLE BUT NO GUARANTEE IS GIVEN THAT ALL EXISTING UTILITIES ARE SHOWN OR THAT THE GIVEN LOCATIONS ARE EXACT. CONFIRMATION OF EXISTENCE AND EXACT LOCATION OF ALL SERVICES MUST BE OBTAINED FROM THE INDIVIDUAL UTILITIES BEFORE PROCEEDING WITH CONSTRUCTION.

NO.	REVISIONS	DATE	BY
1	ISSUED FOR TENDER	19.01.02	RS

Stantec
905 Waverley Street, Winnipeg, Manitoba
Tel 204-489-5900 Fax 204-453-9012

DESIGNED BY	RS	CHECKED BY	RS
DRAWN BY	SC	APPROVED BY	RS
HOR. SCALE:	1:500	RELEASED FOR CONSTRUCTION:	
VERTICAL:		DATE	2/16/19

ENGINEER'S SEAL

CONSULTANT DRAWING NO.
C-124

THE CITY OF WINNIPEG
WATER AND WASTE DEPARTMENT

2018 SEWER RENEWALS BY CIPP LINING
CONTRACT 7
MCMEANS AVENUE E SPL
MH AT ALEX TAYLOR DR TO
MH AT MCMEANS SERVICE RD N

SHEET	OF
25	48
CAD FILE DRAWING NUMBER 18120c-121-922.dwg	
CITY DRAWING NUMBER 11860	

V:\112\active\111218120\0300_drawing\0302_sheet_files\02_civil\18120c-121-922.dwg