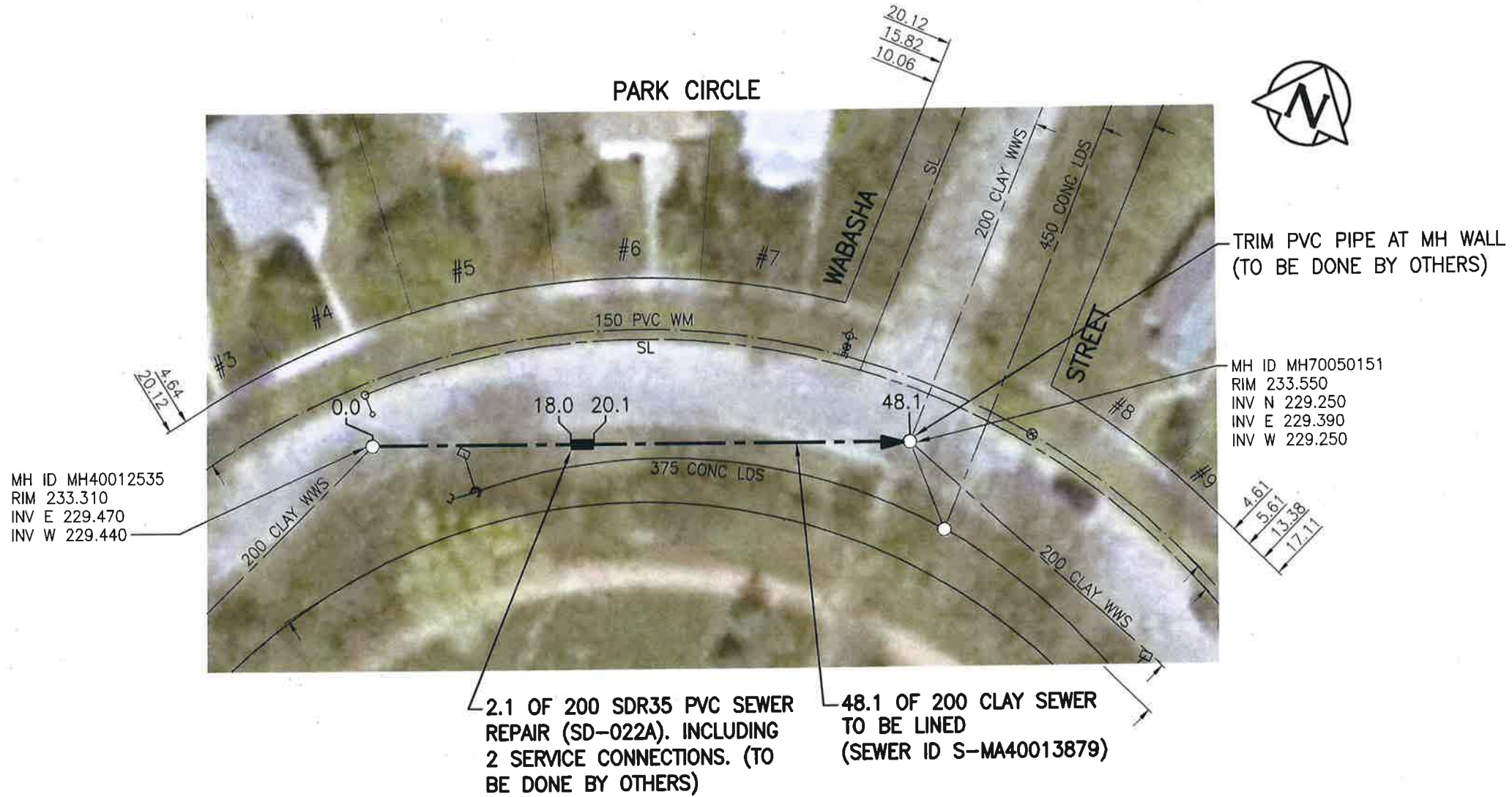


SEWER JUNCTION INFORMATION FROM SEWER VIDEO INSPECTION		
SEWER ID S-MA40013879		
DISTANCE FROM MH40013879		
DISTANCE	DIAMETER	CLOCK
1.4	150	1
7.7	150	12
9.1	150	1
16.0	150	10
18.0	150	10
19.4	150	10
28.5	150	12
29.9	150	12



**WARNING**

IF POWER EQUIPMENT OR EXPLOSIVES ARE TO BE USED FOR EXCAVATION ON THIS PROJECT THE CONTRACTOR MUST:  
 1) NOTIFY THE GAS COMPANY OF THE PROPOSED LOCATION OF EXCAVATION.  
 2) TAKE PRECAUTION TO AVOID DAMAGE TO GAS COMPANY INSTALLATIONS.  
 SEE PROVINCIAL REGULATION 140/92 FOR DETAILS

**ENGINEERS GEOSCIENTISTS MANITOBA**  
 Certificate of Authorization  
 Stantec Consulting Ltd.  
 No. 1301

**METRIC**  
 WHOLE NUMBERS INDICATE MILLIMETRES  
 DECIMALIZED NUMBERS INDICATE METRES  
 1:500 [Scale Bar]  
 BID OPPORTUNITY NO. 1167-2018

**LOCATION APPROVED UNDERGROUND STRUCTURES**

SUPV. U/G STRUCTURES COMMITTEE	DATE

NOTE:  
 LOCATION OF UNDERGROUND STRUCTURES AS SHOWN ARE BASED ON THE BEST INFORMATION AVAILABLE BUT NO GUARANTEE IS GIVEN THAT ALL EXISTING UTILITIES ARE SHOWN OR THAT THE GIVEN LOCATIONS ARE EXACT. CONFIRMATION OF EXISTENCE AND EXACT LOCATION OF ALL SERVICES MUST BE OBTAINED FROM THE INDIVIDUAL UTILITIES BEFORE PROCEEDING WITH CONSTRUCTION.

NO.	REVISIONS	DATE	BY
1	ISSUED FOR TENDER	19.01.02	RS

**Stantec**  
 905 Waverley Street, Winnipeg, Manitoba  
 Tel 204-489-5900 Fax 204-453-9012

DESIGNED BY	RS	CHECKED BY	RS
DRAWN BY	SC	APPROVED BY	RS
HOR. SCALE:	1:500	RELEASED FOR CONSTRUCTION:	[Signature]
VERTICAL:		DATE	01/10/20

ENGINEER'S SEAL  
  
 CONSULTANT DRAWING NO.  
**C-130**

**THE CITY OF WINNIPEG**  
 WATER AND WASTE DEPARTMENT

2018 SEWER RENEWALS BY CIPP LINING  
 CONTRACT 7  
**PARK CIRCLE**  
 1ST MH N OF RAVELSTON AVE E TO  
 MH AT WABASHA ST

SHEET	OF
31	48
CAD FILE DRAWING NUMBER	
18120c-121-922.dwg	
CITY DRAWING NUMBER	
11866	

V:\1112\active\111218120\0300\_drawing\0302\_sheet\_files\02\_civil\18120c-121-922.dwg