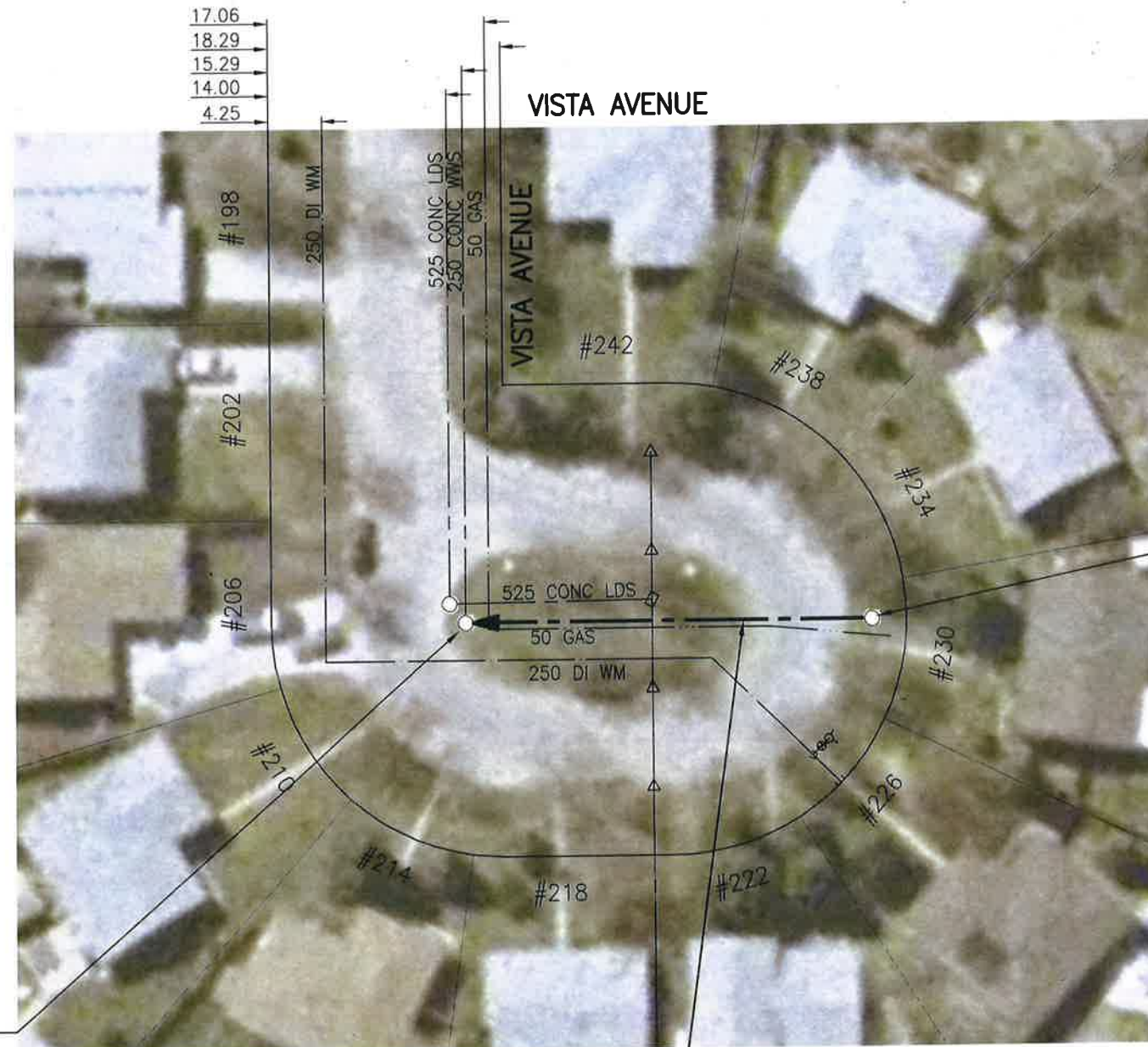


SEWER JUNCTION INFORMATION FROM SEWER VIDEO INSPECTION		
SEWER ID S-MA50013956		
DISTANCE FROM MH50011145		
DISTANCE	DIAMETER	CLOCK
1.3	150	3
1.5	150	9
14.5	150	9
20.6	150	9
28.2	150	9



MH ID MH50010124
RIM 232.120
INV N 228.920
INV S 228.910

MH ID MH50011145
RIM 232.080
INV N 229.120

31.6 OF 250 CONC SEWER TO BE LINED
(SEWER ID S-MA50013956)

WARNING

IF POWER EQUIPMENT OR EXPLOSIVES ARE TO BE USED FOR EXCAVATION ON THIS PROJECT THE CONTRACTOR MUST:
1) NOTIFY THE GAS COMPANY OF THE PROPOSED LOCATION OF EXCAVATION.
2) TAKE PRECAUTION TO AVOID DAMAGE TO GAS COMPANY INSTALLATIONS.
SEE PROVINCIAL REGULATION 140/92 FOR DETAILS

**ENGINEERS
GEOSCIENTISTS
MANITOBA**
Certificate of Authorization
Stantec Consulting Ltd.
No. 1301

METRIC
WHOLE NUMBERS INDICATE MILLIMETRES
DECIMALIZED NUMBERS INDICATE METRES

1:500

BID OPPORTUNITY NO. 1167-2018

LOCATION APPROVED UNDERGROUND STRUCTURES

SUPV. U/G STRUCTURES COMMITTEE DATE

NOTE:
LOCATION OF UNDERGROUND STRUCTURES AS SHOWN ARE BASED ON THE BEST INFORMATION AVAILABLE BUT NO GUARANTEE IS GIVEN THAT ALL EXISTING UTILITIES ARE SHOWN OR THAT THE GIVEN LOCATIONS ARE EXACT. CONFIRMATION OF EXISTENCE AND EXACT LOCATION OF ALL SERVICES MUST BE OBTAINED FROM THE INDIVIDUAL UTILITIES BEFORE PROCEEDING WITH CONSTRUCTION.

		B.M. ELEV.	
1	ISSUED FOR TENDER	19.01.02	RS
NO.	REVISIONS	DATE	BY

Stantec
905 Waverley Street, Winnipeg, Manitoba
Tel 204-489-5900 Fax 204-453-9012

DESIGNED BY	RS	CHECKED BY	RS
DRAWN BY	SC	APPROVED BY	RS
HOR. SCALE:	1:500	RELEASED FOR CONSTRUCTION:	
VERTICAL:		DATE	18.10.29

ENGINEER'S SEAL
PROVINCE OF MANITOBA
R.M. SHERLOCK
REGISTERED PROFESSIONAL ENGINEER
MEMBER 24045
CONSULTANT DRAWING NO. C-140

THE CITY OF WINNIPEG
WATER AND WASTE DEPARTMENT

2018 SEWER RENEWALS BY CIPP LINING
CONTRACT 7
VISTA AVENUE
MH NE CUL DE SAC TO
10TH MH E OF ST. MARY'S RD

SHEET	OF
41	48
CAD FILE DRAWING NUMBER 18120c-131-922.dwg	
CITY DRAWING NUMBER 11876	

V:\112\active\11218120\0302_drawing\0302_sheet_files\02_civil\18120c-131-922.dwg