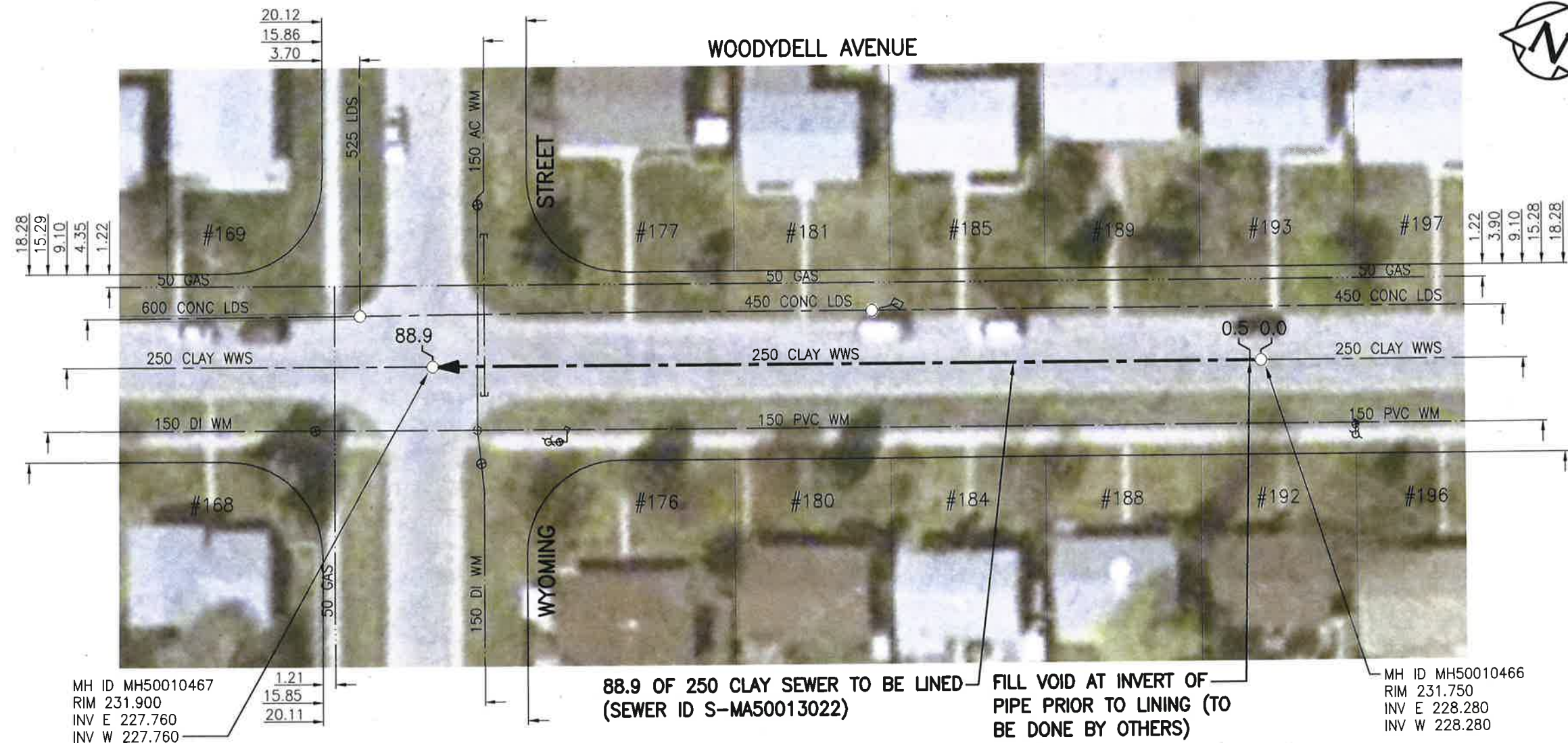


SEWER JUNCTION INFORMATION FROM SEWER VIDEO INSPECTION

SEWER ID S-MA50013022		
DISTANCE FROM MH50010466		
DISTANCE	DIAMETER	CLOCK
5.6	150	10
6.1	150	2
7.1	150	2
8.7	150	10
21.3	150	10
21.8	150	2
22.6	150	3
24.2	150	10
35.4	150	10
36.0	150	10
36.5	150	1
38.0	150	2
39.6	150	10
51.9	150	2
52.8	150	10
69.5	150	2
70.4	150	10



MH ID MH50010467
RIM 231.900
INV E 227.760
INV W 227.760

88.9 OF 250 CLAY SEWER TO BE LINED
(SEWER ID S-MA50013022)

FILL VOID AT INVERT OF PIPE PRIOR TO LINING (TO BE DONE BY OTHERS)

MH ID MH50010466
RIM 231.750
INV E 228.280
INV W 228.280

WARNING

IF POWER EQUIPMENT OR EXPLOSIVES ARE TO BE USED FOR EXCAVATION ON THIS PROJECT THE CONTRACTOR MUST:
1) NOTIFY THE GAS COMPANY OF THE PROPOSED LOCATION OF EXCAVATION.
2) TAKE PRECAUTION TO AVOID DAMAGE TO GAS COMPANY INSTALLATIONS.
SEE PROVINCIAL REGULATION 140/92 FOR DETAILS

ENGINEERS GEOSCIENTISTS MANITOBA
Certificate of Authorization
Stantec Consulting Ltd.
No. 1301

METRIC
WHOLE NUMBERS INDICATE MILLIMETRES
DECIMALIZED NUMBERS INDICATE METRES

BID OPPORTUNITY NO. 1167-2018

LOCATION APPROVED UNDERGROUND STRUCTURES

SUPV. U/G STRUCTURES COMMITTEE	DATE

NOTE:
LOCATION OF UNDERGROUND STRUCTURES AS SHOWN ARE BASED ON THE BEST INFORMATION AVAILABLE BUT NO GUARANTEE IS GIVEN THAT ALL EXISTING UTILITIES ARE SHOWN OR THAT THE GIVEN LOCATIONS ARE EXACT. CONFIRMATION OF EXISTENCE AND EXACT LOCATION OF ALL SERVICES MUST BE OBTAINED FROM THE INDIVIDUAL UTILITIES BEFORE PROCEEDING WITH CONSTRUCTION.

NO.	REVISIONS	DATE	BY
1	ISSUED FOR TENDER	19.01.02	RS

Stantec
905 Waverley Street, Winnipeg, Manitoba
Tel 204-489-5900 Fax 204-453-9012

DESIGNED BY	RS	CHECKED BY	RS
DRAWN BY	SC	APPROVED BY	RS
HOR. SCALE:	1:500	RELEASED FOR CONSTRUCTION:	
VERTICAL:		DATE	18.10.29

ENGINEER'S SEAL
PROVINCE OF MANITOBA
REGISTERED PROFESSIONAL ENGINEER
R.M. SHERLOCK
MEMBER 24045
CONSULTANT DRAWING NO. C-145

THE CITY OF WINNIPEG
WATER AND WASTE DEPARTMENT

2018 SEWER RENEWALS BY CIPP LINING
CONTRACT 7
WOODYDELL AVENUE
2ND MH W OF DAKOTA ST TO
3RD MH W OF DAKOTA ST

SHEET OF	46 OF 48
CAD FILE DRAWING NUMBER	18120c-141-922.dwg
CITY DRAWING NUMBER	11881

V:\112\active\11218120\0300_drawing\0302_sheet_files\02_civil\18120c-141-922.dwg