

- GENERAL NOTES**
- A. PAVEMENT DIMENSIONS ARE TO BACK OF CURB
  - B. ALL CURB RADII UNDER 15.0m SHALL BE MODIFIED
  - C. ADD 200.000m TO ALL DESIGN ELEVATION TO OBTAIN GEODETIC ELEVATIONS
  - D. CURB REPLACEMENT AS DIRECTED BY CONTRACT ADMINISTRATOR
  - E. CONTRACTOR TO CONFIRM THE LOCATION OF ALL UTILITIES/SERVICES IN THE FIELD PRIOR TO CONSTRUCTION

**PRELIMINARY**  
NOT TO BE USED FOR CONSTRUCTION

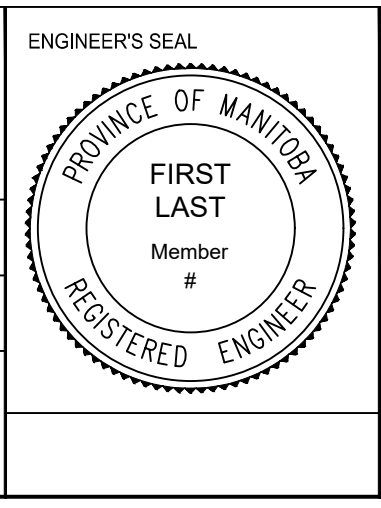
BID OPPORTUNITY NO. 101-2019

**METRIC**  
WHOLE NUMBERS INDICATE MILLIMETRES  
DECIMALIZED NUMBERS INDICATE METRES

EXISTING	LEGEND - PLAN	PROPOSED	EXISTING	LEGEND - PLAN	PROPOSED	EXISTING	LEGEND - PROFILE	PROPOSED
⊕	HYDRANT	◆	---	LDS/WWS	---	▒	CONCRETE	▒
⊗	VALVE	●	---	WATERMAIN	---	▒	CONCRETE SIDEWALK	▒
⊕	CURB STOP	●	---	GAS	---	▒	ASPHALT	▒
○	MANHOLE	●	---	TRAFFIC SIGNALS	---			
□	CATCH BASIN	■	---	HYDRO/STREET LIGHT	---	EXISTING	LEGEND - PLAN	PROPOSED
△	CURB INLET	▲	---	MTS	---			
○	HYDRO POLE	●	---	CURB RENEWAL	---			
○	LIGHT STANDARD	●	---	PROPERTY LINE	---			
○	TRAFFIC SIGNAL POLE	●	---	RAMP CURB	---			
⊕	SURVEY BAR	◆	---	ELEVATIONS	(231.000)			
⊕	GEODETIC BENCH MARK	⊕	---	TREE	---			

NO.	REVISIONS	DATE	BY
1.	SUBMIT FOR PLAN APPROVAL	19/03/08	M.S.

DESIGNED BY	M.S.	CHECKED BY	C.H.



**THE CITY OF WINNIPEG**  
PUBLIC WORKS DEPARTMENT

**STAFFORD STREET**  
FROM McMILLAN AVE TO CORYDON AVE  
REGIONAL SIDEWALK RENEWAL AND ASSOCIATED WORKS  
FROM STA. 1+00 TO STA. 2+65

CITY DRAWING NUMBER  
SE-19-04  
SHEET 4 OF 5  
**4**