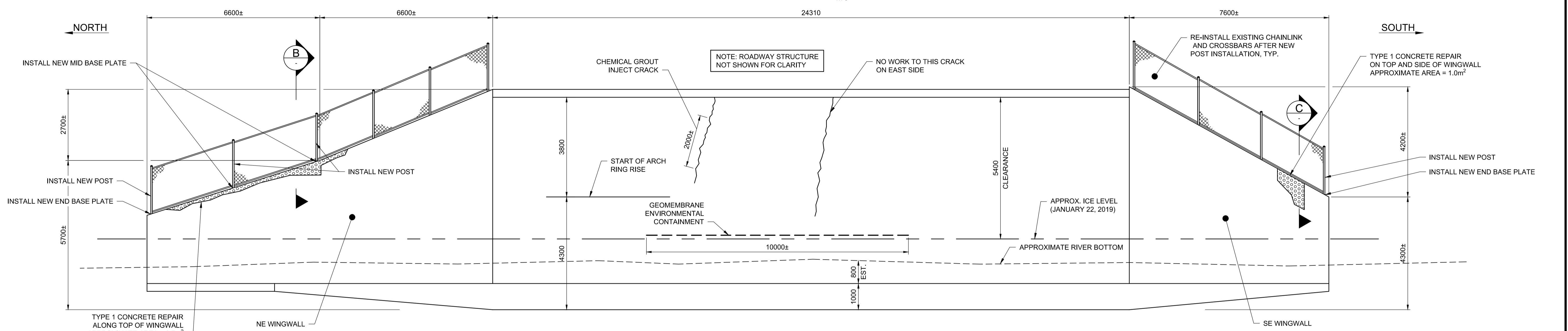


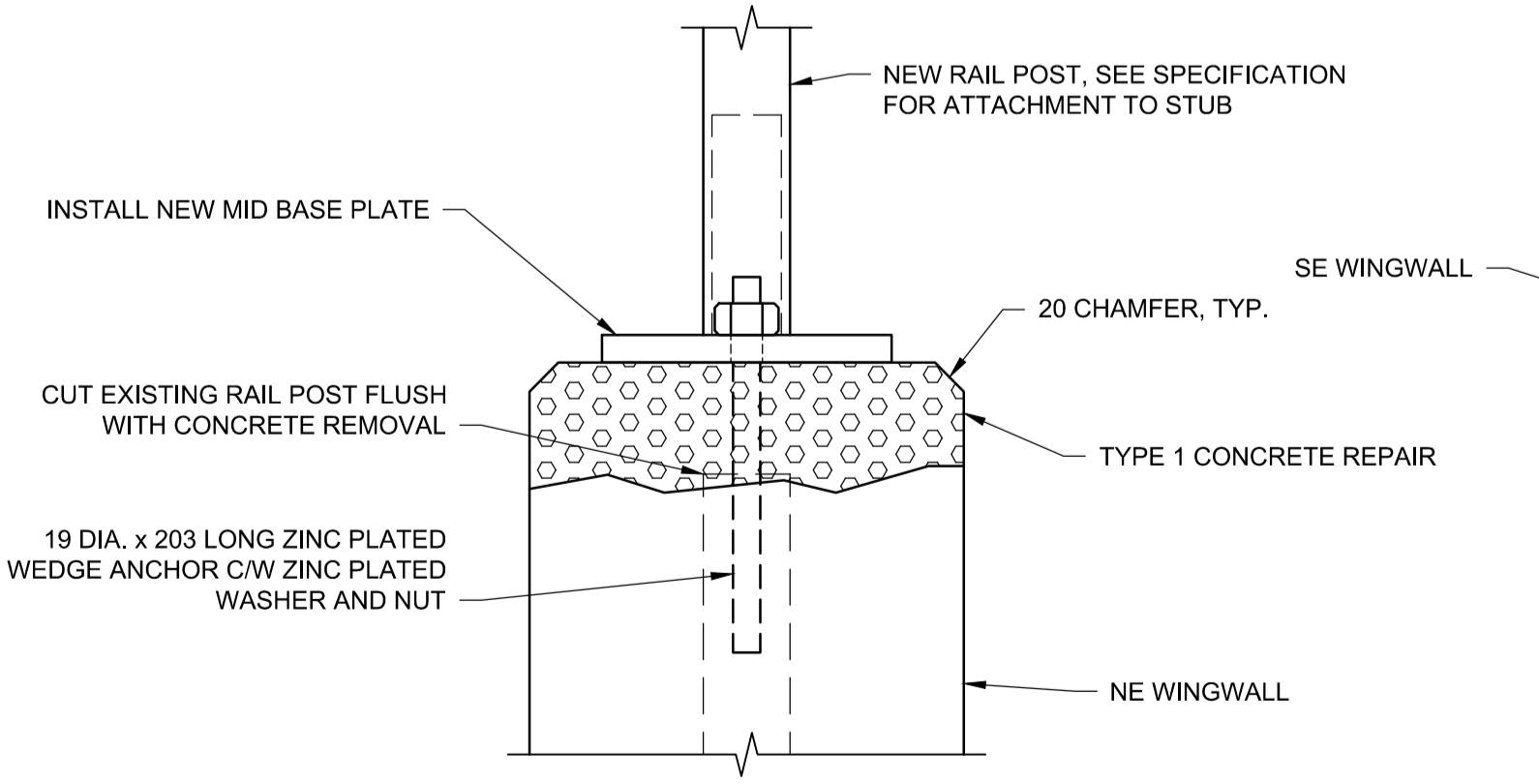
INTERIOR ELEVATION (LOOKING WEST)
1:75



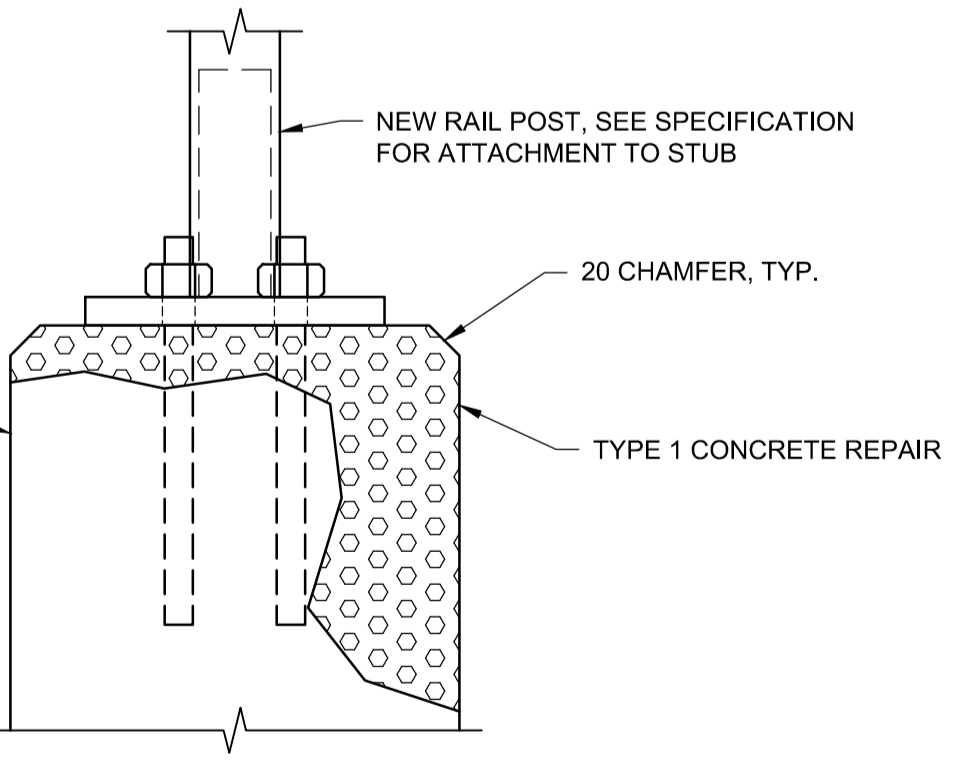
INTERIOR ELEVATION (LOOKING EAST)
1:75

- LEGEND:**
- TYPE 1 CONCRETE REPAIR
 - TYPE 2 CONCRETE REPAIR

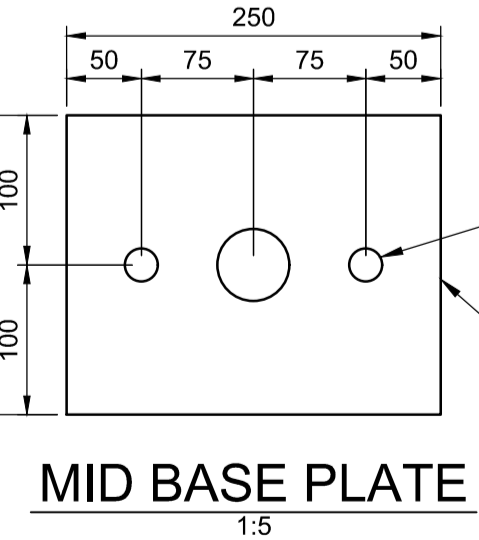
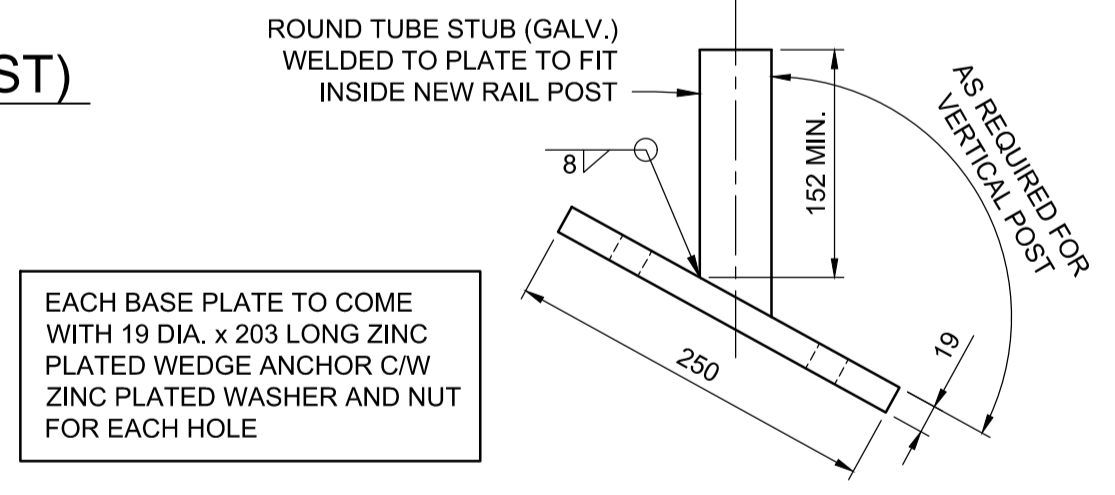
- TYPE 1 CONCRETE REPAIR METHOD**
1. MIN. 20 mm SAWCUT AROUND PERIMETER OF REPAIR AREA.
 2. REMOVE ALL FRACTURED OR DETERIORATED CONCRETE TO:
 - 2.1. SOUND CONCRETE.
 - 2.2. MIN. 30 mm DEEP, AND
 - 2.3. IF REMOVALS EXCEED HALF DEPTH OF REINFORCING BARS, THEN CONTINUE MIN. 20 mm PAST REINFORCING BARS.
 3. CLEAN CONCRETE REPAIR AREA AS SPECIFIED.
 4. INSTALL GALVASHIELD XPT - ANODE TYPE 1A CLASS P*:
 - 4.1. IN ACCORDANCE WITH MANUFACTURER'S GUIDELINES.
 - 4.2. MAX 400 mm O/C AROUND PERIMETER OF REPAIR AREA.
 - 4.3. MAX 400 mm O/C GRID PATTERN FOR INTERIOR OF REPAIR AREA.
 5. PLACE REPAIR MATERIAL.
- *CONFIRM GALVANIC ANODE LAYOUT WITH CONTRACT ADMINISTRATOR PRIOR TO PLACEMENT OF REPAIR MATERIAL.



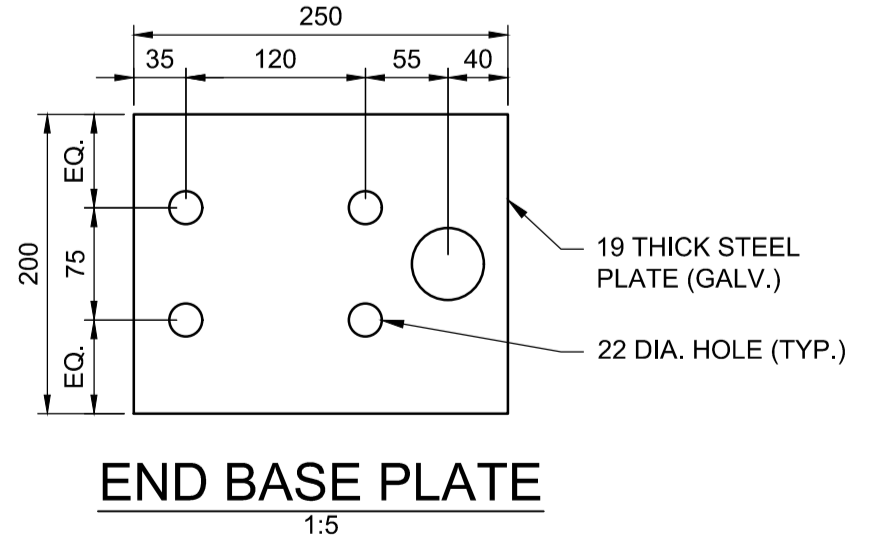
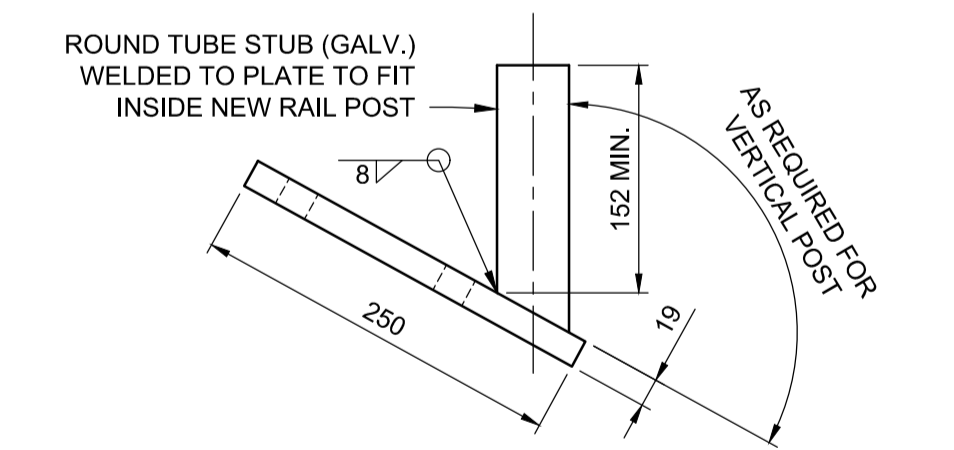
B SECTION
1:5



C SECTION
1:5



MID BASE PLATE
1:5



END BASE PLATE
1:5

- NOTES:**
1. DIMENSIONS SHOWN OF EXISTING CONCRETE IS APPROXIMATE.
 2. DIMENSIONS SHOWN OF REPAIR AREAS ARE APPROXIMATE. LAYOUT ACTUAL REPAIR AREAS WITH CONTRACT ADMINISTRATOR ON SITE.
 3. SEE SPECIFICATION FOR REPAIR PREPARATION & CONCRETE REPLACEMENT DETAILS.
 4. ALL REINFORCING BARS MARKED WITH 'X' FOR CONCRETE REPAIR WORKS SHALL CONFORM TO THE REQUIREMENTS OF ASTM A1035 CS GRADE 100 LOW-CARBON CHROMIUM STEEL.

METRIC

WHOLE NUMBERS INDICATE MILLIMETRES
DECIMALIZED NUMBERS INDICATE METRES

APEGN
Certificate of Authorization
Dillon Consulting Limited (MB)
No. 1789 Date: 2019/04/17

B.M. ELEV.	DESIGNED BY	KB
	DRAWN BY	MDG
	CHECKED BY	DRA
	APPROVED BY	RJT
	HOR. SCALE	-
	VERTICAL	-
	DATE	2019/04/17
1	ISSUED FOR CONSTRUCTION	19/04/17 KB
NO.	REVISIONS	DATE BY

DILLON CONSULTING

ENGINEER'S SEAL
PROVINCE OF MANITOBA
D.R.C. AMORIM
2019/04/17
Member 33215
REGISTERED PROFESSIONAL ENGINEER

THE CITY OF WINNIPEG
PUBLIC WORKS DEPARTMENT

2019 BRIDGE MAINTENANCE
C302 PROVENCHER CULVERT

CITY DRAWING NUMBER
C302-19-02

SHEET 06 OF 07

CONSULTANT PROJECT NUMBER
19-9109

CONCRETE REPAIRS 1

CONSULTANT DRAWING NUMBER
--