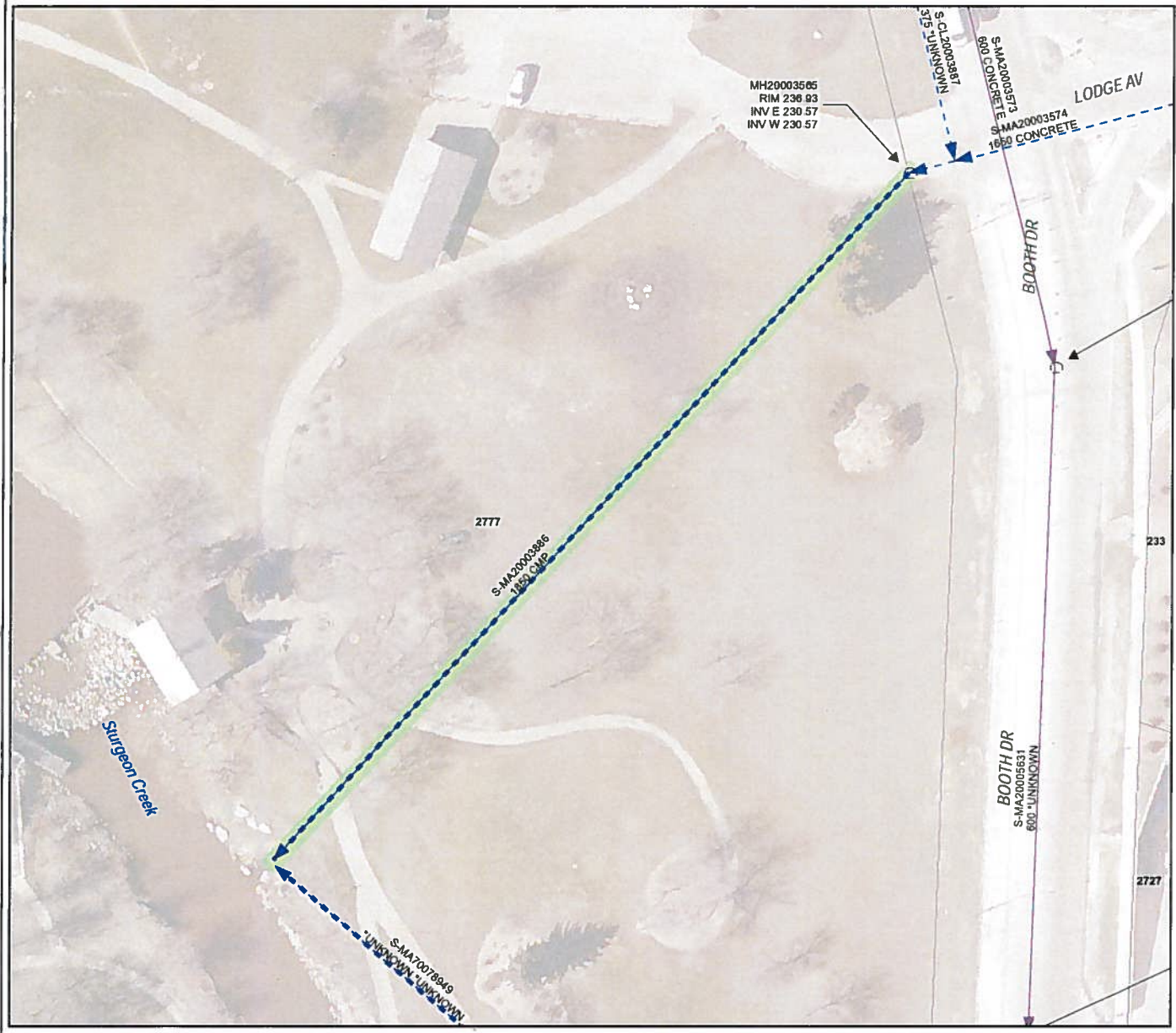


APPENDIX B – LODGE AVENUE OUTFALL GENERAL LOCATION MAP AND SITE SPECIFIC SUPPORTING DOCUMENTATION



MH20003505
RIM 236.93
INV E 230.57
INV W 230.57

S-MA20003574
600 CONCRETE
S.C. 20003687
375 UNKNOWN

S-MA20003574
600 CONCRETE
S-MA20003574
1600 CONCRETE

2777
S-MA20003886
1850 CONCRETE

BOOTH DR
S-MA20005631
600 UNKNOWN

LODGE AV

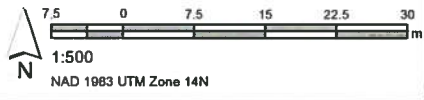
Surgeon Creek

233

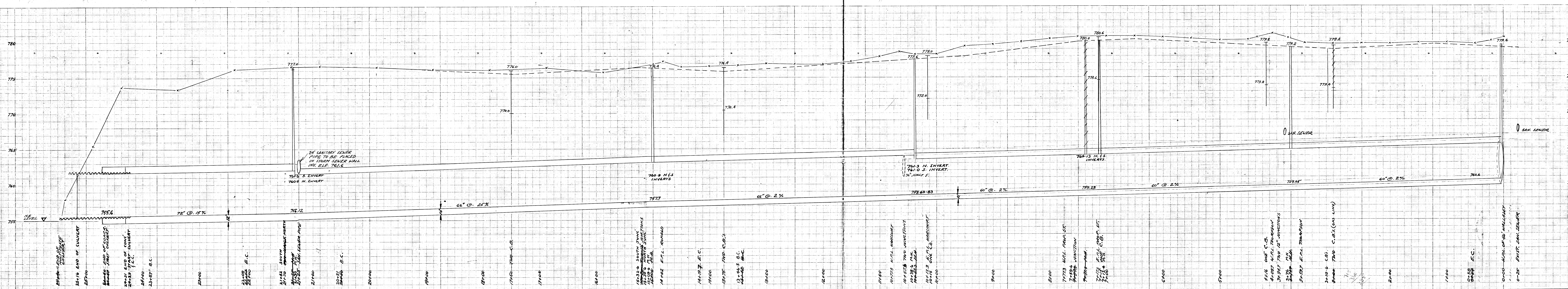
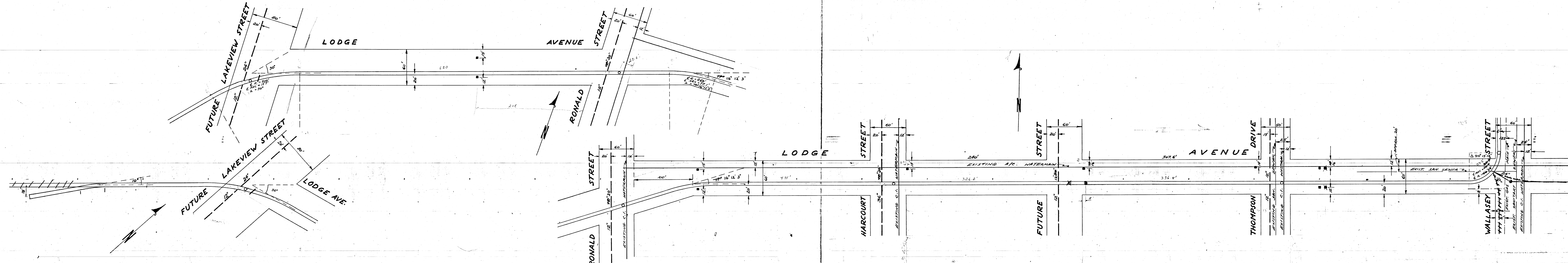
2727

- LEGEND**
- LDS
 - WWS
 - SEWER MANHOLE

SITE CONSIDERATIONS:
LAND ENTRY REQUIREMENTS



Outfall Asset Number: S-MA20003886 - 116.83m
 Upstream Sewer Asset Number: None - 0m
 Upstream Manhole Coordinates: 623996.9375E, 5626700.7238N
 Location: 633 LODGE



NOTES:
ALL M.M.'S PLACED @ NORTH SIDE OF SEWER.

LEGEND:
 - - - PROPOSED STORM SEWER (M.M.)
 - - - PROPOSED FUTURE SEWER
 - - - PROPOSED C.B.
 - - - EXISTING WATERMAIN
 - - - EXISTING SEWER
 - - - EXISTING GAS MAIN

BENCH MARK: 782.43 NYOR @ WALLASEY / LODGE

NO.	REVISIONS:	DATE BY:
	AS BUILT	MAY 24, 1959

**THE CITY OF ST. JAMES
ENGINEERING DEPARTMENT**

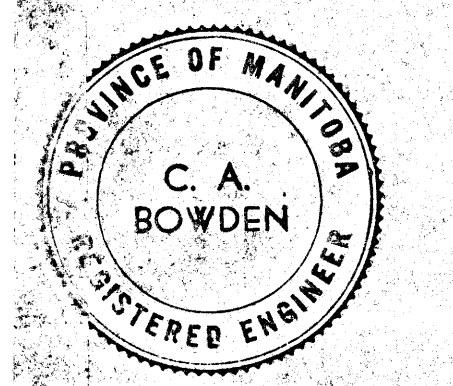
TITLE: LODGE AVENUE
60" 66" 72" STORM SEWER IN TUNNEL
WALLASEY ST - STURGEON CR.

DESIGNED BY: J. Bowden
DATE: 22ND DEC 1959

APPROVED: [Signature]
CITY ENGINEER

SCALE: HOR. 1" = 50'
VERT. 1" = 2'

FILE: 433-B



WC-0429

WC-0429

FILE # SE10243

WC-429