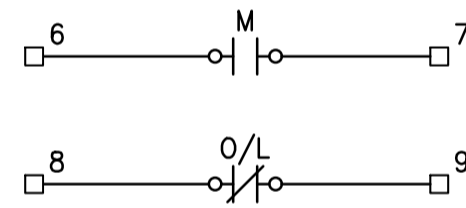
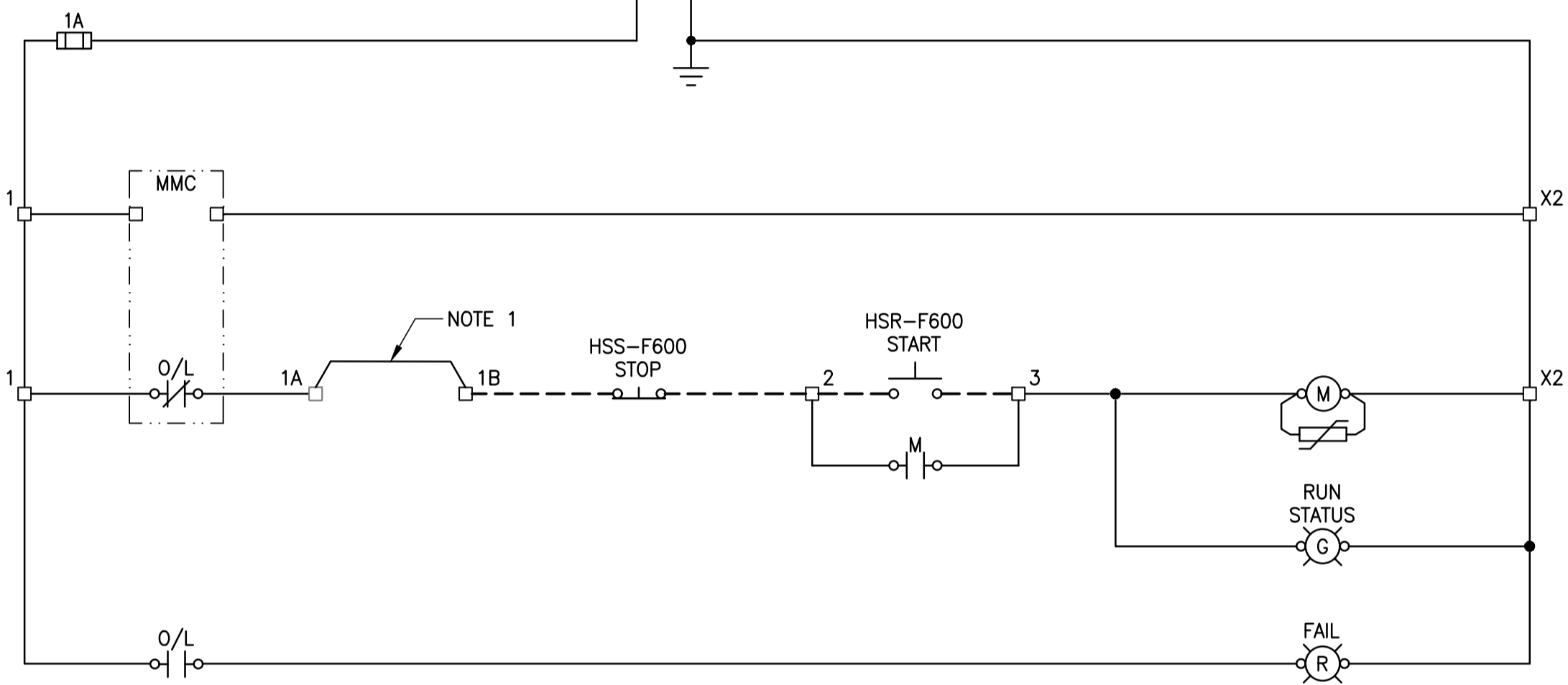
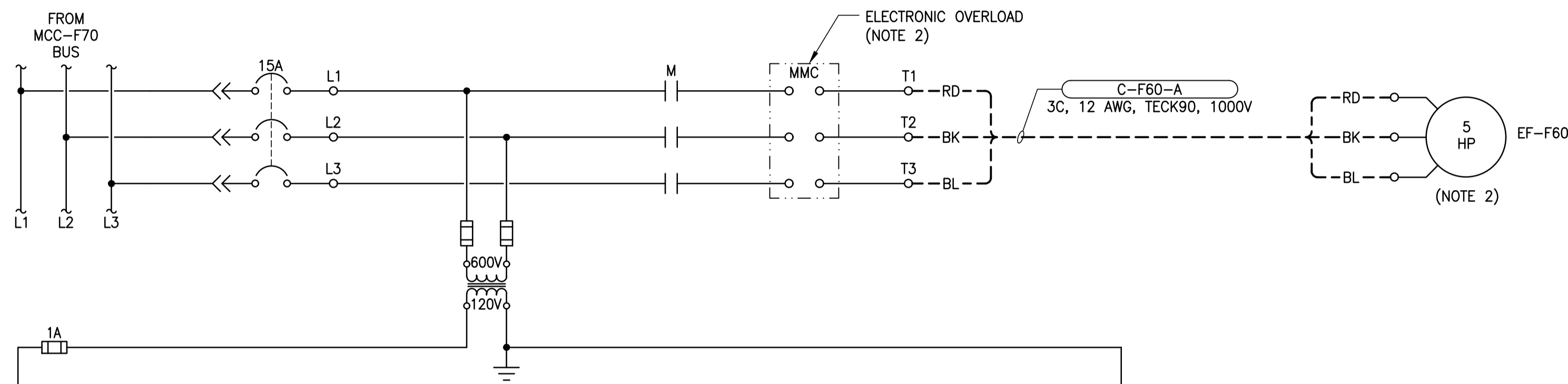


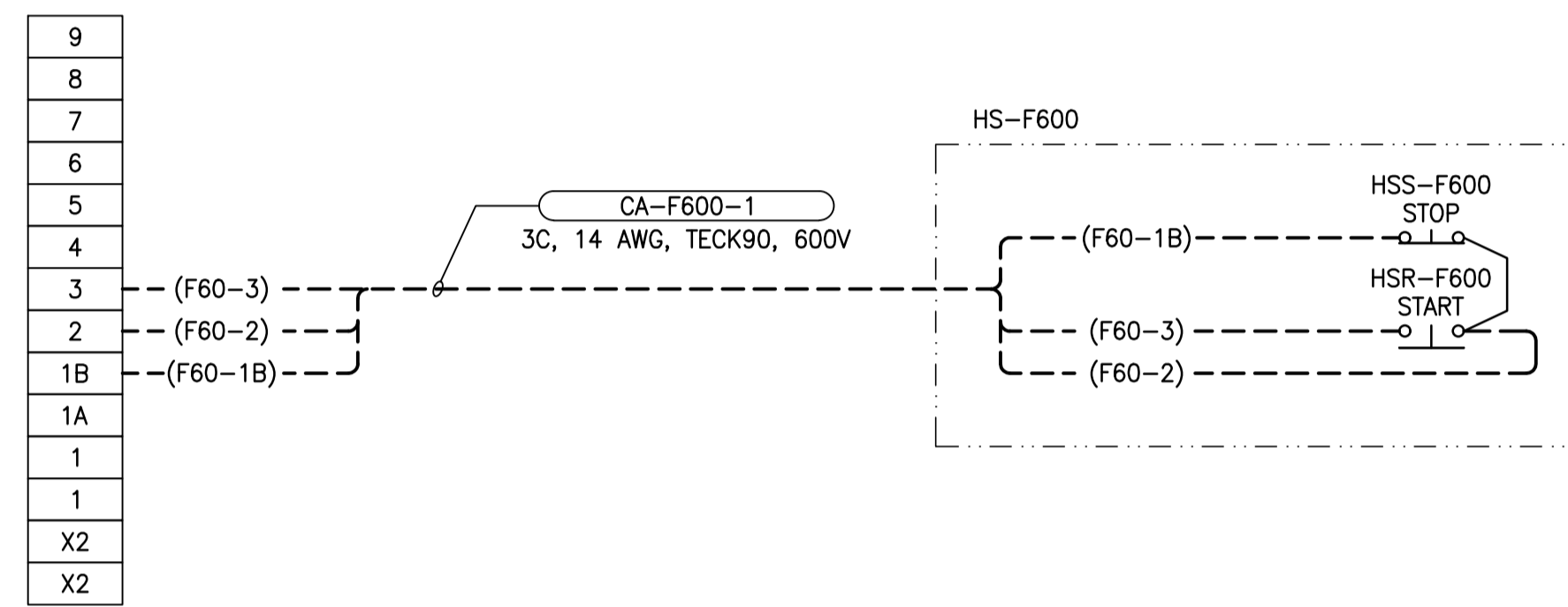
**NOTES:**

1. REMOVE JUMPER AND CONNECT FIELD INTERLOCK AS REQUIRED.
2. CONTRACTOR SHALL CONFIRM MOTOR HORSEPOWER AND FULL LOAD AMP RATINGS, PROVIDE SUITABLE ELECTRONIC OVERLOAD AND ADJUST OVERLOAD SETTING TO SUIT.



**SCHEMATIC DIAGRAM**

SCALE: N.T.S.



**WIRING DIAGRAM**

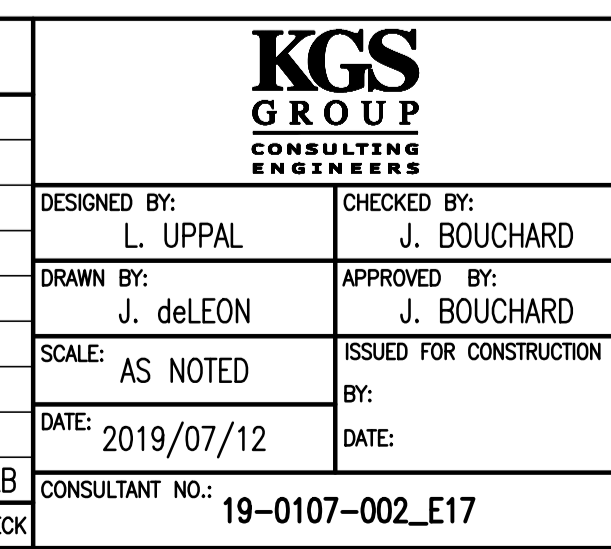
SCALE: N.T.S.

**LEGEND**

- STARTER TERMINALS
- ▭ FUSE
- FIELD WIRING
- MANUFACTURER WIRING
- (M) CONTACTOR COIL
- (R) RED PILOT
- /|/ normally OPEN
- /|/ normally CLOSED



B.M.	-			
ELEV.	-			
DESIGNED BY:	L. UPPAL			
CHECKED BY:	J. BOUCHARD			
DRAWN BY:	J. deLEON			
APPROVED BY:	J. BOUCHARD			
SCALE:	AS NOTED			
ISSUED FOR CONSTRUCTION BY:				
DATE:	2019/07/12			
DATE:				
CONSULTANT NO.:	19-0107-002_E17			
NO.	REVISIONS	DATE	DESIGN	CHECK
00	ISSUED FOR TENDER AND CONSTRUCTION	2019/07/12	LU	JAB



ENGINEER'S SEAL

**THE CITY OF WINNIPEG**  
WATER AND WASTE DEPARTMENT

**CLIFTON FLOOD PUMPING STATION UPGRADES**  
ELECTRICAL  
MOTOR STARTER SCHEMATIC  
EF-F60  
EXHAUST FAN

CITY DRAWING NUMBER: 1-0125F-E0023-001

SHEET	REV.	SIZE
00	00	A1