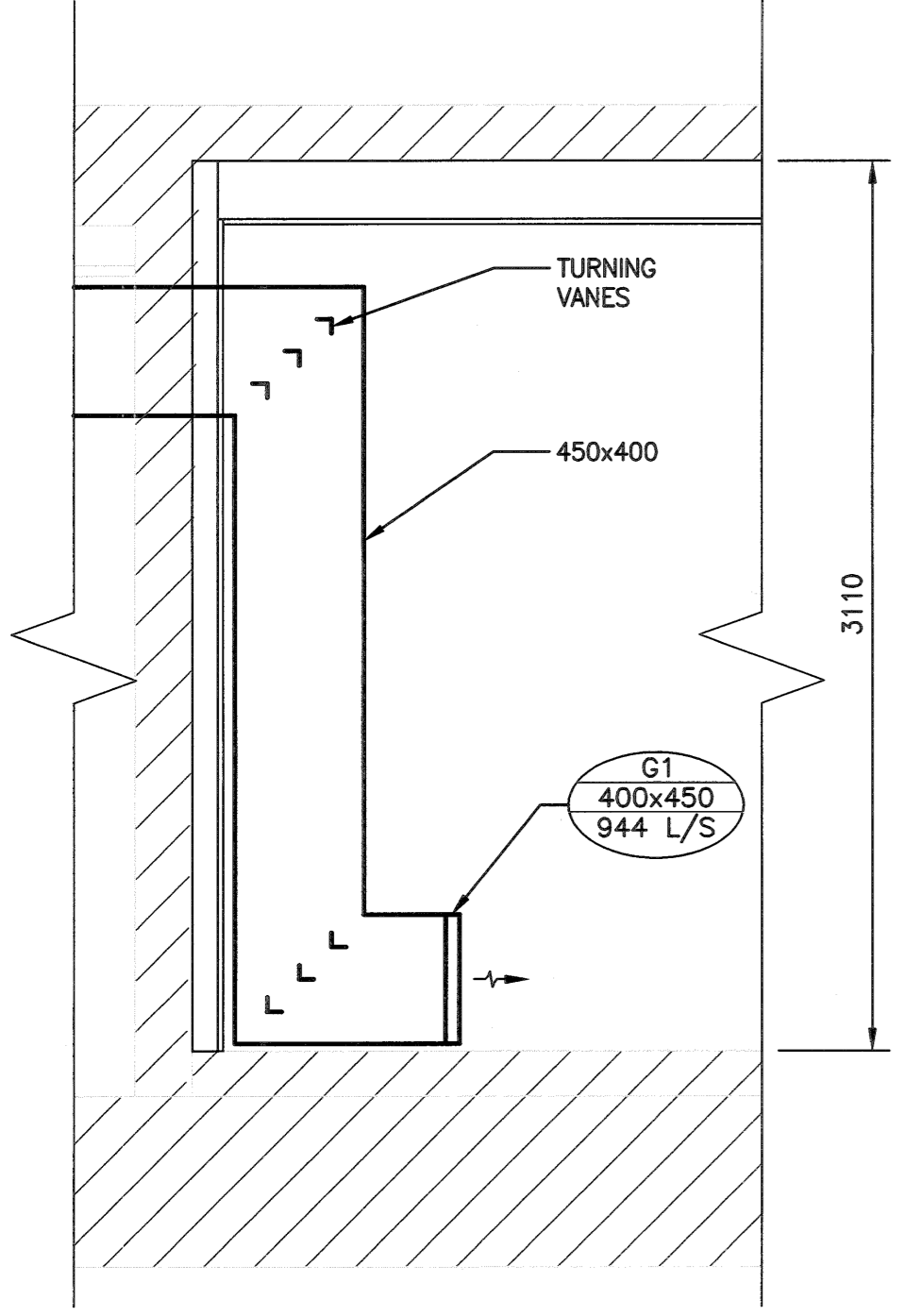
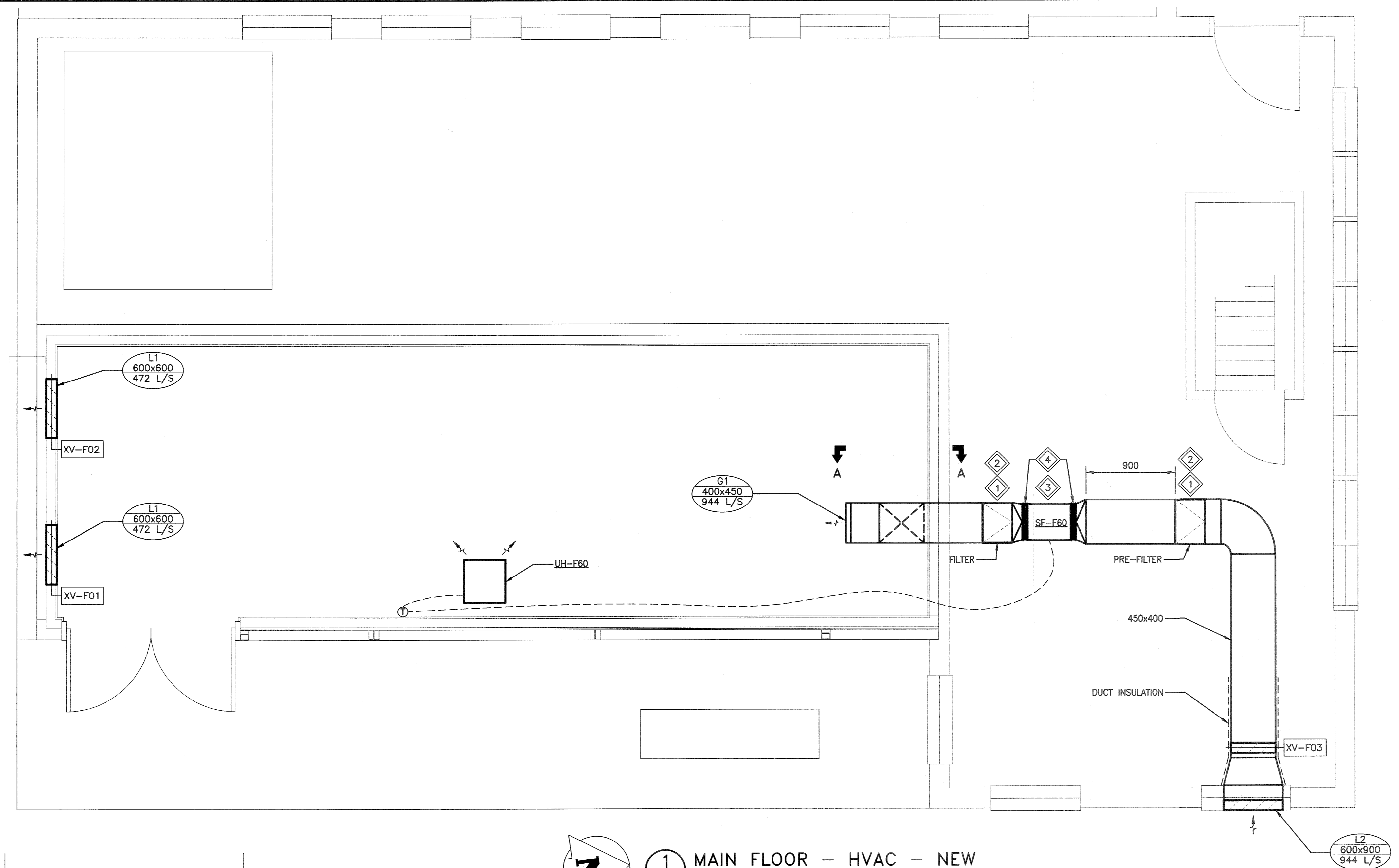


- KEYNOTES:**
- 1 SUPPLY AND INSTALL FILTERS AS SHOWN COMPLETE WITH ACCESS DOOR FOR FILTER REPLACEMENT.
  - 2 PROVIDE 2 SETS OF SPARE FILTERS FOR THE OWNERS FUTURE USE.
  - 3 THE SUPPLY FAN SHALL BE INSTALLED ON SPRING VIBRATION ISOLATORS.
  - 4 SUPPLY AND INSTALL FLEXIBLE CONNECTION BETWEEN DUCTWORK AND SUPPLY FAN.



**FAN SCHEDULE**

TAG No.	CAPACITY	E.S.P.	FRPM	VOLTAGE	MOTOR			ACCESSORIES	MAKE/MODEL
					HP	ENCL	RPM		
SF-F60	944 L/s	374 Pa	1725	575/3ø/60	1.0	ODP	1800	SPRING HANGING ISOLATORS AND BRACKETS	"GREENHECK"/TBI-CA-5H18-15

**ELECTRIC UNIT HEATER SCHEDULE**

TAG No.	CAPACITY	VOLTAGE	CONTROLS	ACCESSORIES	MAKE/MODEL
UH-F60	3.0 kW	600/3/60	REMOTE SPACE THERMOSTAT	MOUNTING BRACKET AND SPACE THERMOSTAT	"CALORITECH"/GE058C

**MOTORIZED DAMPER SCHEDULE**

LOUVRE No.	SIZE (WxH)	ACCEPTABLE PRODUCT	ACTUATOR
XV-F01	600x600	TAMCO 9000/PARALLEL BLADE/FLANGED	BELIMO/NFBUP-S ACT-SPRING/2POS/90 IN-LB/SW
XV-F02	600x600	TAMCO 9000/PARALLEL BLADE/FLANGED	BELIMO/NFBUP-S ACT-SPRING/2POS/90 IN-LB/SW
XV-F03	400x450	TAMCO 9000/PARALLEL BLADE/FLANGED	BELIMO/NFBUP-S ACT-SPRING/2POS/90 IN-LB/SW

**GRILLE SCHEDULE**

GRILLE No.	SIZE	ACCEPTABLE RPRODUCT
G1	400x450	E.H.PRICE/MODEL 151/SINGLE DEFLECTION/LOUVERED FACE SUPPLY

**LOUVRE SCHEDULE**

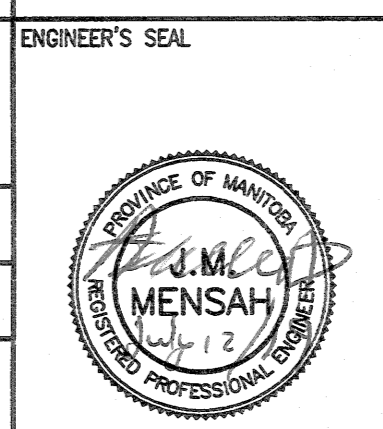
LOUVRE No.	SIZE (WxH)	ACCEPTABLE PRODUCT
L1	600x600	E.H.PRICE/DE439
L2	600x900	E.H.PRICE/DE439

**ENGINEERS GEOSCIENTISTS MANITOBA**  
 Certificate of Authorization  
 KGS Group  
 No. 245

B.M. -	
ELEV. -	
DESIGNED BY: J. MENSAH	CHECKED BY: [Signature]
DRAWN BY: M. LOCCQUIAO	APPROVED BY: [Signature]
SCALE: AS NOTED	ISSUED FOR CONSTRUCTION BY: [Signature]
DATE: 2019/07/12	DATE:
CONSULTANT NO.: 19-0107-002_M01	
NO. REVISIONS	DATE DESIGN CHECK
00	ISSUED FOR TENDER CONSTRUCTION 2019/07/12

**KGS GROUP CONSULTING ENGINEERS**

DESIGNED BY: J. MENSAH  
 CHECKED BY: [Signature]  
 DRAWN BY: M. LOCCQUIAO  
 APPROVED BY: [Signature]  
 SCALE: AS NOTED  
 ISSUED FOR CONSTRUCTION BY: [Signature]  
 DATE: 2019/07/12  
 DATE:  
 CONSULTANT NO.: 19-0107-002\_M01



**THE CITY OF WINNIPEG**  
 WATER AND WASTE DEPARTMENT

CLIFTON FLOOD PUMPING STATION UPGRADES

MECHANICAL  
 MAIN FLOOR  
 HVAC NEW

CITY DRAWING NUMBER: 1-0125F-M0001-001  
 SHEET: 00  
 REV: 00  
 SIZE: A1