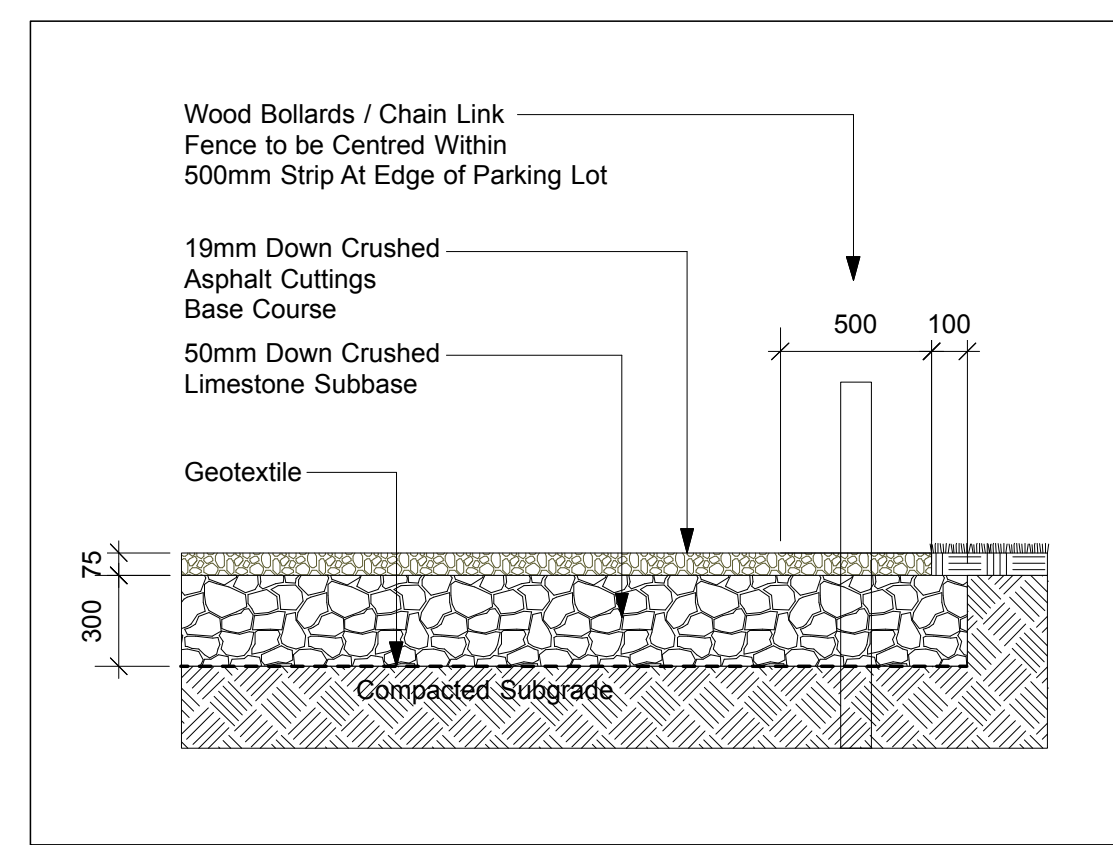


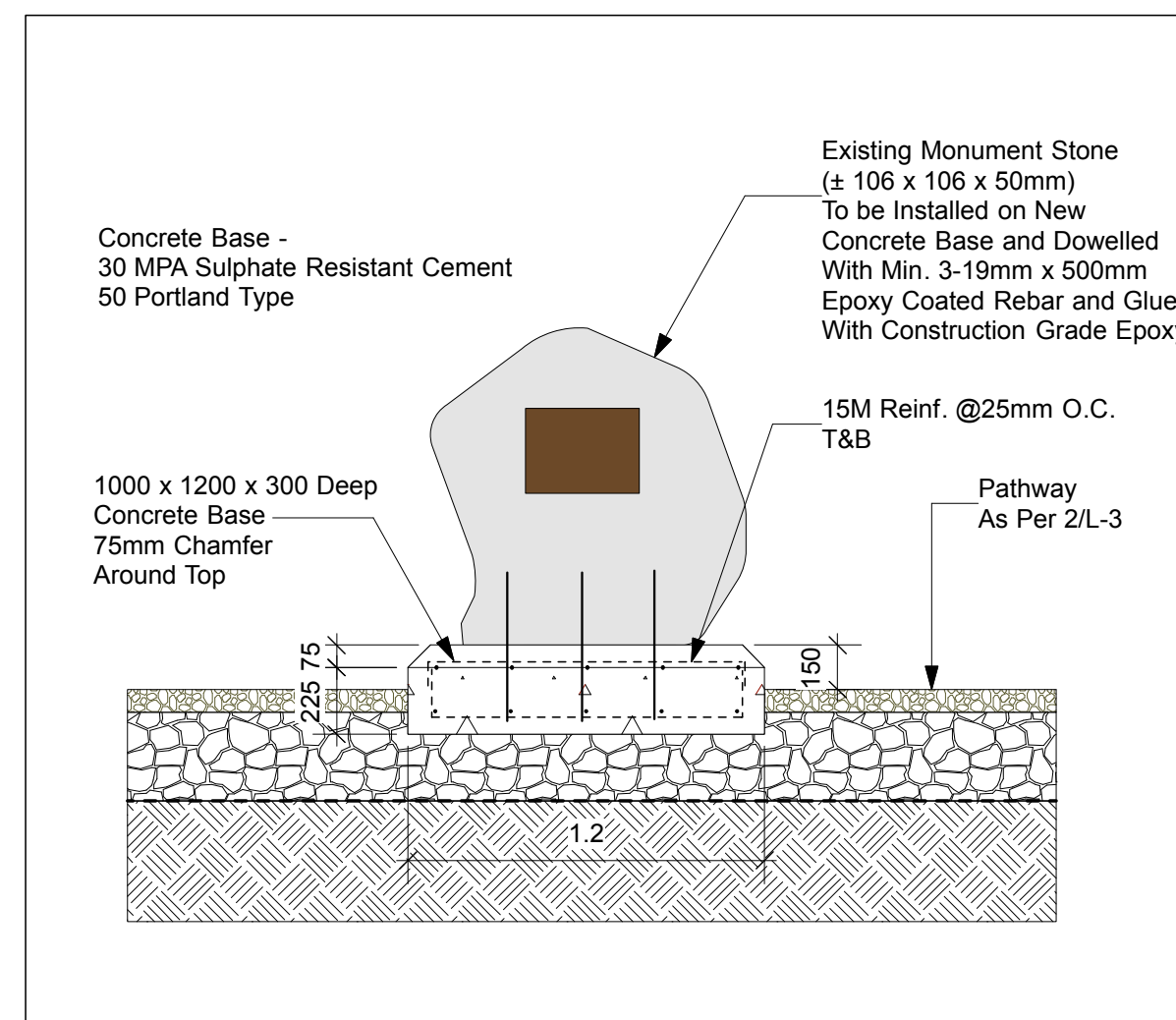
1 GRADING PLAN
L-3 Scale: 1:500



2 PARKING LOT / PATHWAY DETAIL
L-3 Scale: 1:25



Existing Monument Stone as located in SW corner of Optimist Park, near old entrance road.

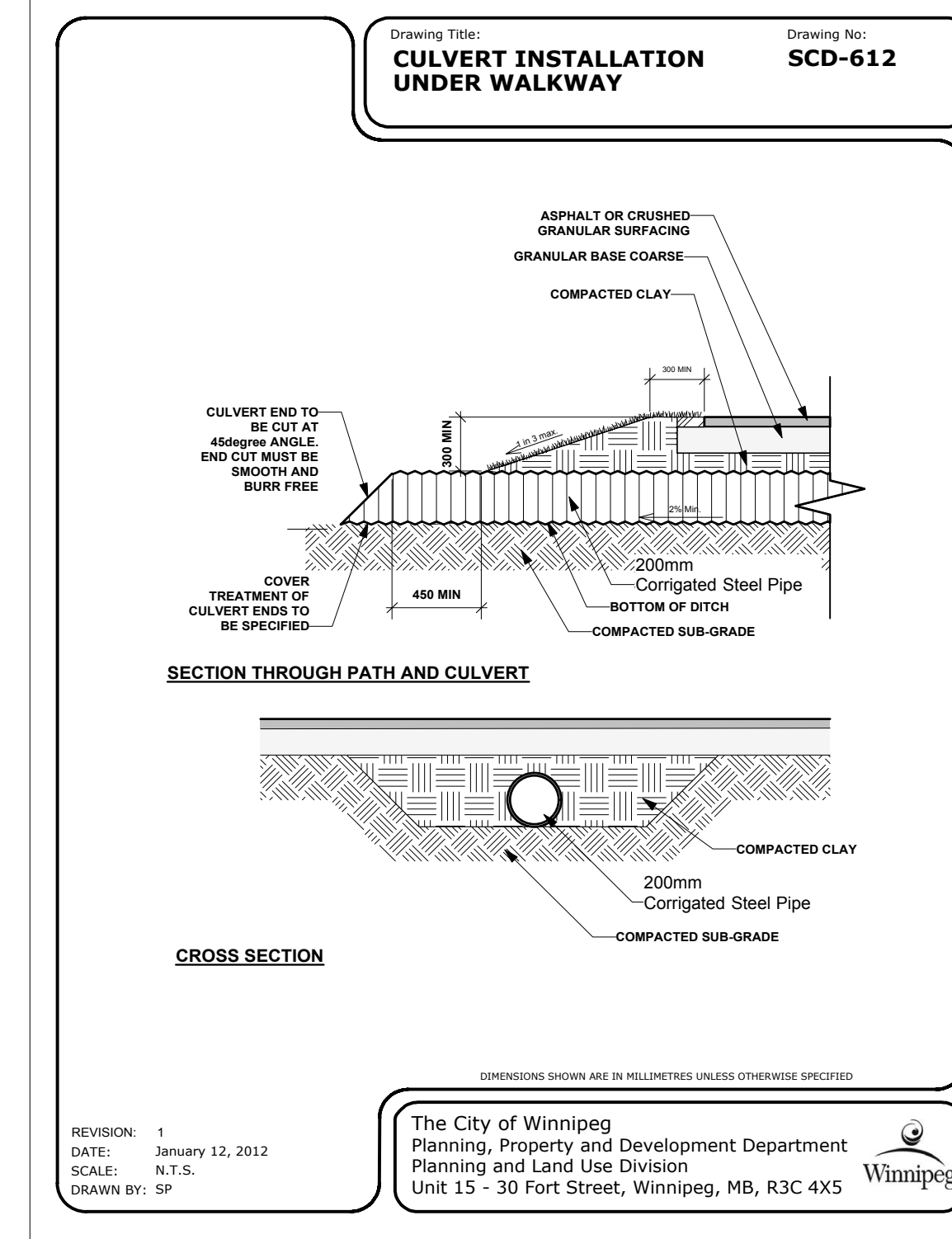


3 MEMORIAL STONE DETAIL
L-3 Scale: 1:25

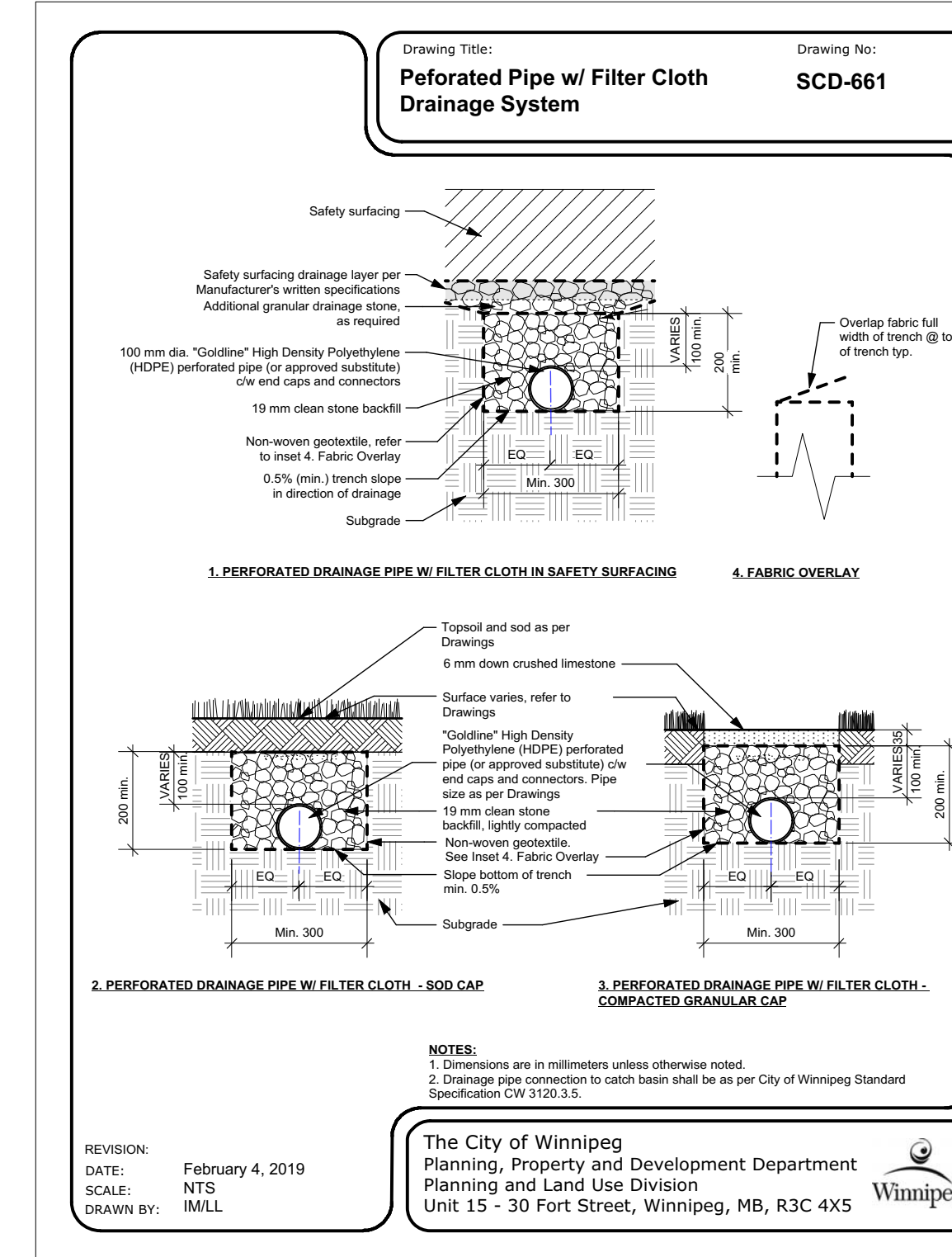
LEGEND AND NOTES

- 238.49+ Existing Grades (metric)
Refer to L-1 for Complete Site Survey
- +238.45 Proposed Grades (metric)
- BS/BD Bottom of Swale/Ditch
- TS Top of Swale/Ditch
- TTC Top of Timber Cap
- INV Invert
- RD Road
- 2% Direction and % Slope

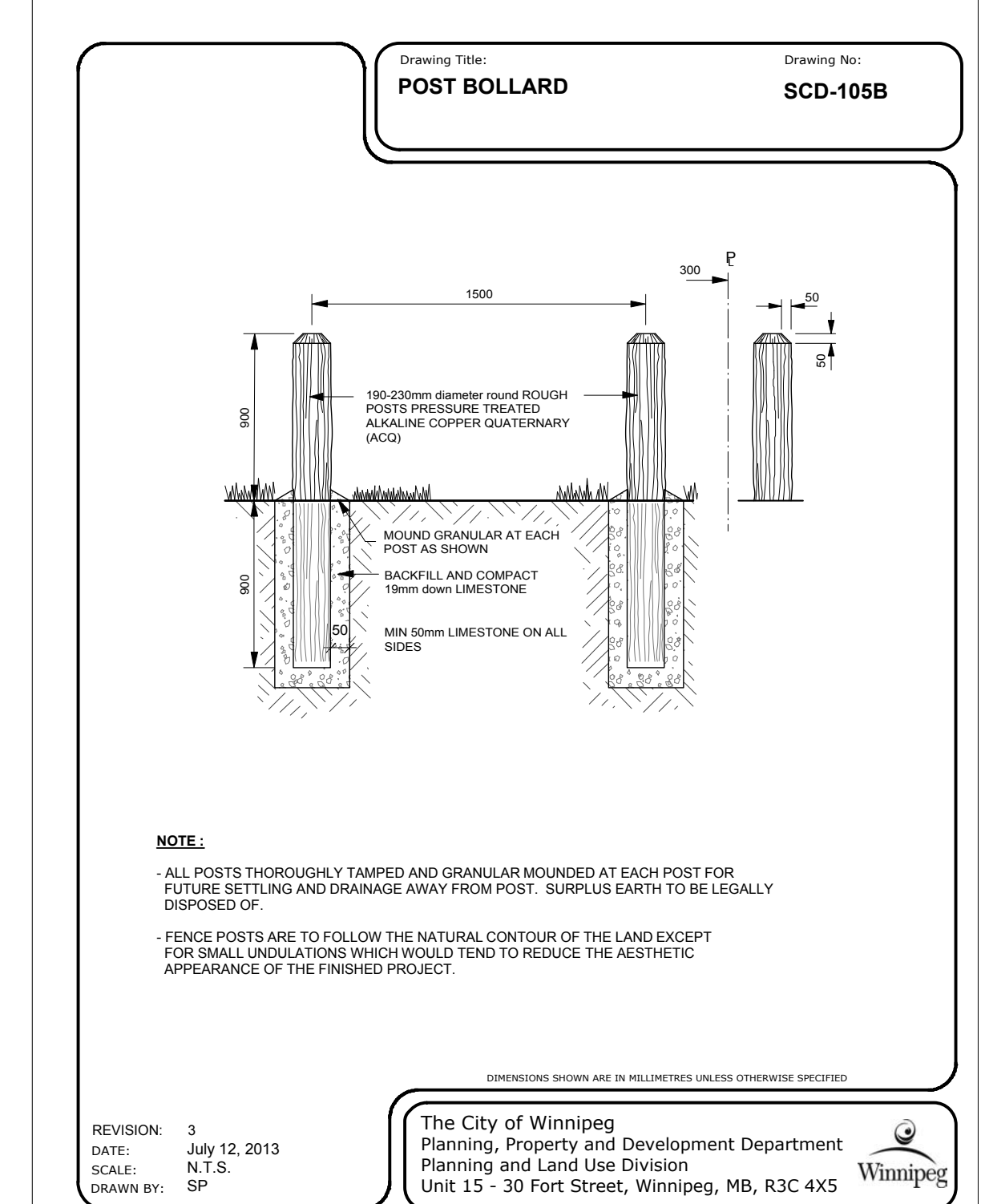
Ditch/Swale Bottoms to be Minimum 1m Wide
Site Grading to be Within Construction Boundary



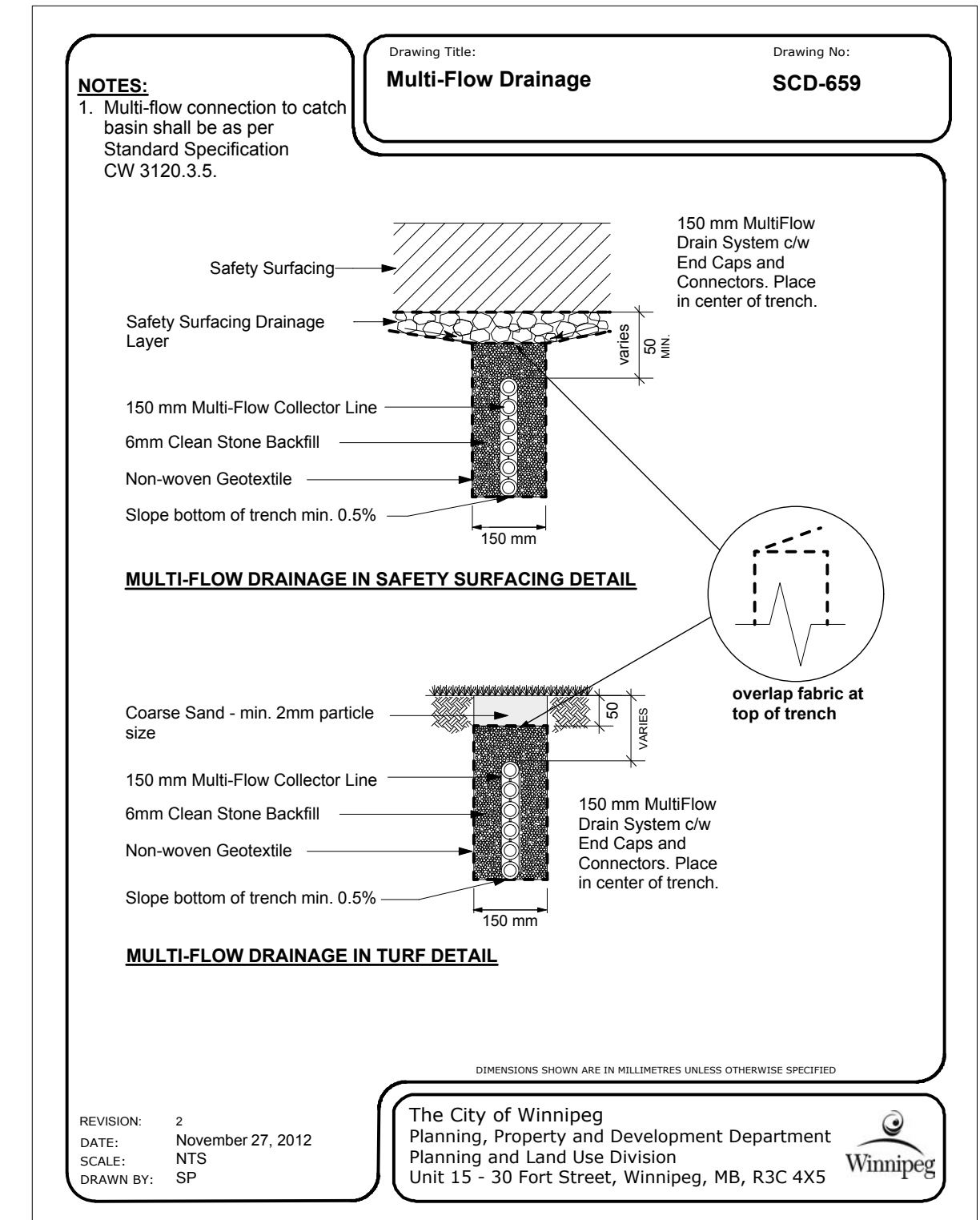
The City of Winnipeg
Planning, Property and Development Department
Unit 15 - 30 Fort Street, Winnipeg, MB, R3C 4X5



The City of Winnipeg
Planning, Property and Development Department
Unit 15 - 30 Fort Street, Winnipeg, MB, R3C 4X5

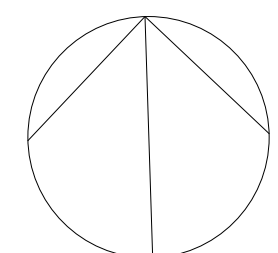


The City of Winnipeg
Planning, Property and Development Department
Unit 15 - 30 Fort Street, Winnipeg, MB, R3C 4X5



The City of Winnipeg
Planning, Property and Development Department
Unit 15 - 30 Fort Street, Winnipeg, MB, R3C 4X5

Location of underground structures as shown are based on the best information available but no guarantee is given that all existing utilities are shown or that the given locations are exact. Confirmation of existence and exact location of all services must be obtained from the individual utilities before proceeding with construction.
DO NOT SCALE DRAWING - PLOT MAY NOT BE AT 100%



NO.	REVISION / NOTE	DATE	BY
9			
8			
7			
6			
5			
4			
3			
2			
1			

PROJECT
OPTIMIST PARK
EAST SOCCER FIELD AND
ASSOCIATED FACILITIES
1600 SUMMIT ROAD
WINNIPEG

SCALE	AS SHOWN
DATE	JULY 23, 2019
DRAWN BY	JP/LLW
CHECKED BY	DW
PROJECT NO.	1906

DRAWING TITLE
GRADING PLAN AND
DETAILS
SHEET NO.