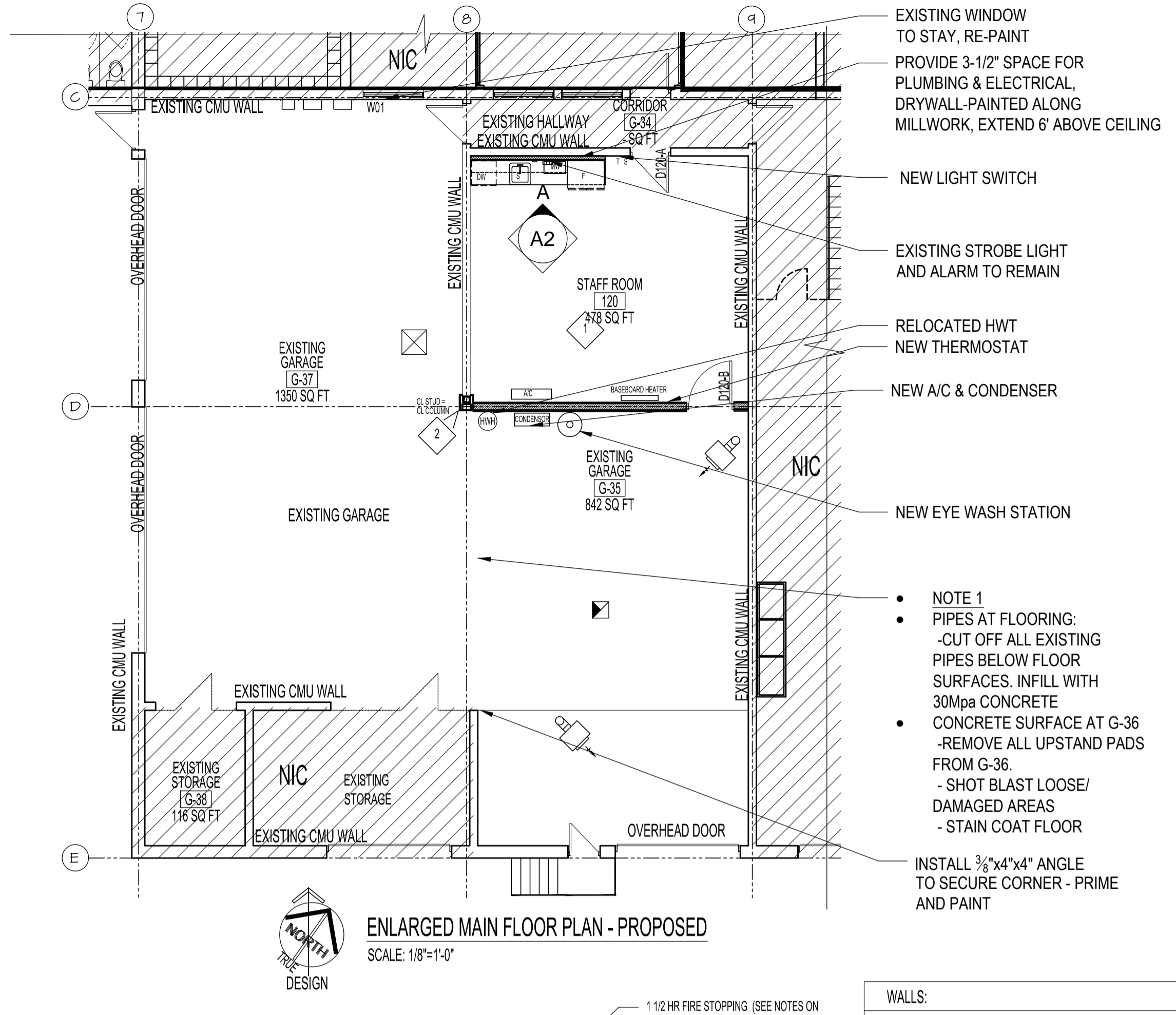
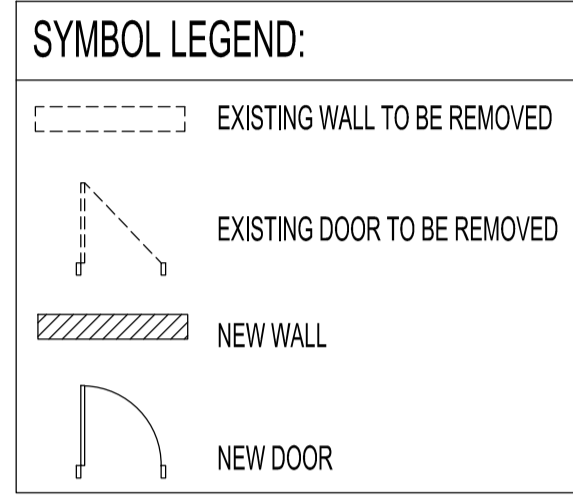
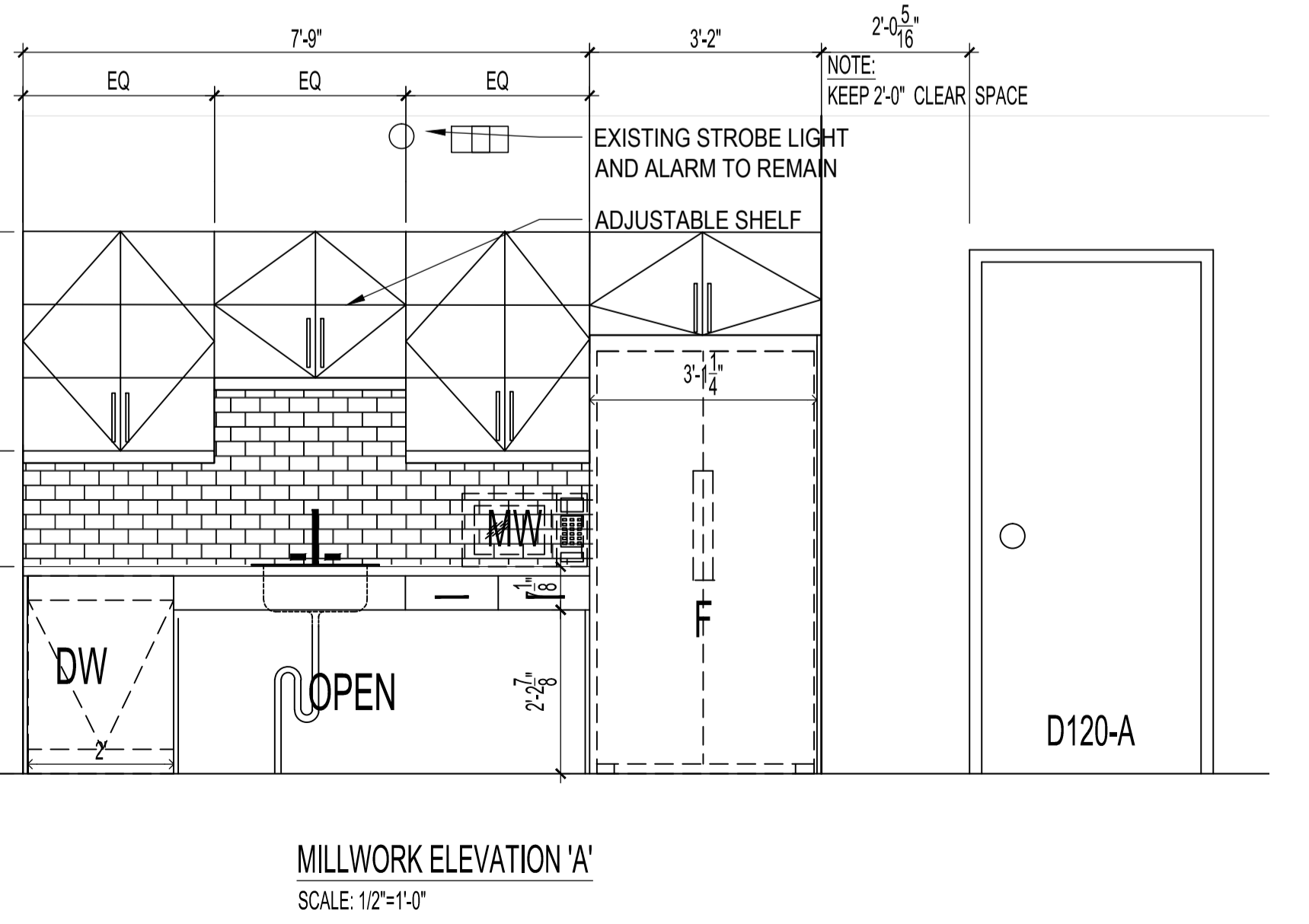
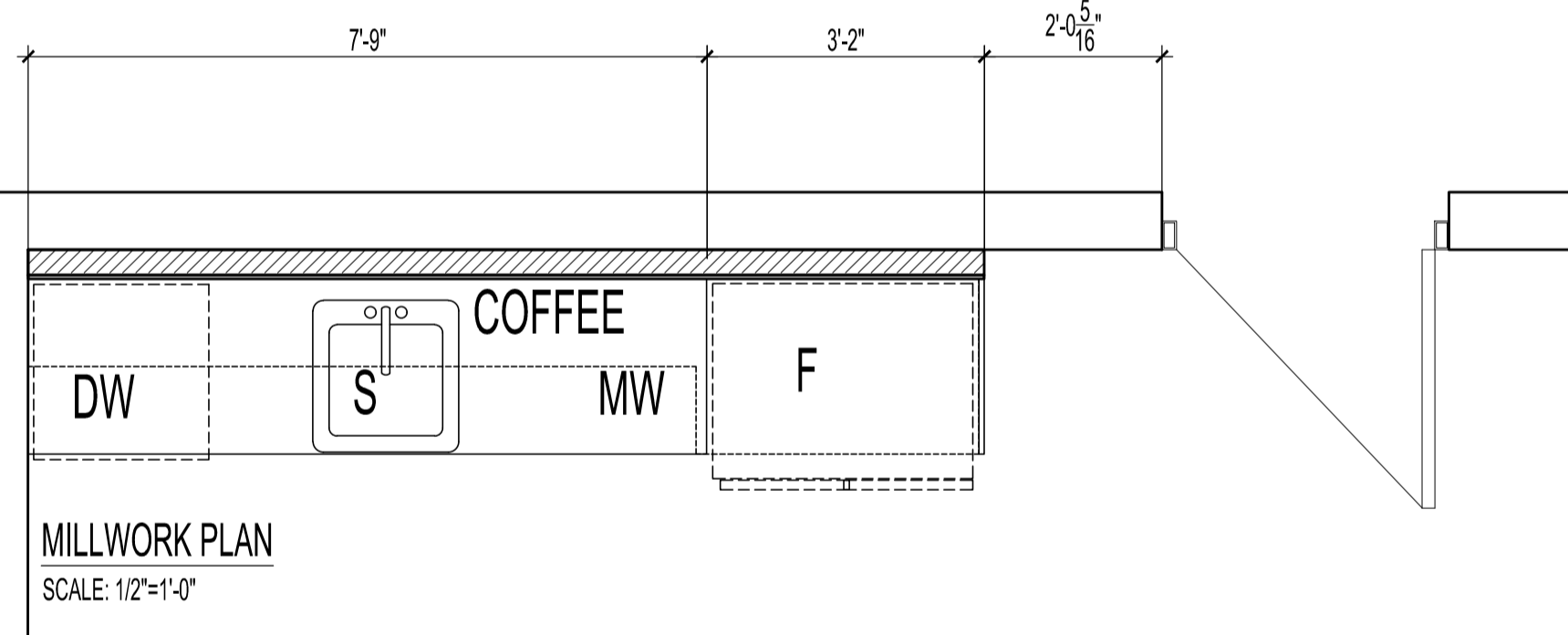


**DEMOLITION NOTES:**

- 1 REMOVE SINK
- 2 SEE PROPOSED NOTE 1
- 3 REMOVE EXISTING LIGHTS
- 4 RELOCATE THERMOSTAT
- 5 RELOCATE EXISTING HWT
- 6 EXISTING LIGHTS TO REMAIN IN THE GARAGE AREA



- NOTES:**
- EXISTING WINDOW TO STAY, RE-PAINT
  - PROVIDE 3-1/2" SPACE FOR PLUMBING & ELECTRICAL, DRYWALL-PAINTED ALONG MILLWORK, EXTEND 6' ABOVE CEILING
  - NEW LIGHT SWITCH
  - EXISTING STROBE LIGHT AND ALARM TO REMAIN
  - RELOCATED HWT NEW THERMOSTAT
  - NEW A/C & CONDENSER
  - NEW EYE WASH STATION
  - NOTE 1
  - PIPES AT FLOORING:
    - CUT OFF ALL EXISTING PIPES BELOW FLOOR SURFACES. INFILL WITH 30MPA CONCRETE
    - CONCRETE SURFACE AT G-36
    - REMOVE ALL UPSTAND PADS FROM G-36
    - SHOT BLAST LOOSE/DAMAGED AREAS
    - STAIN COAT FLOOR
  - INSTALL 3/8"x4"x4" ANGLE TO SECURE CORNER - PRIME AND PAINT



**PLASTIC LAMINATE**  
 PL #1 ARBORITE  
 ELEGANT WHITE S550 (SIDES AND FRONTS)  
 PL #2 ARBORITE  
 TATAMI NIKKI P298(SIDES AND FRONTS)

**MELAMINE**  
 ALL INTERIOR CABINETS TO BE WHITE MELAMINE

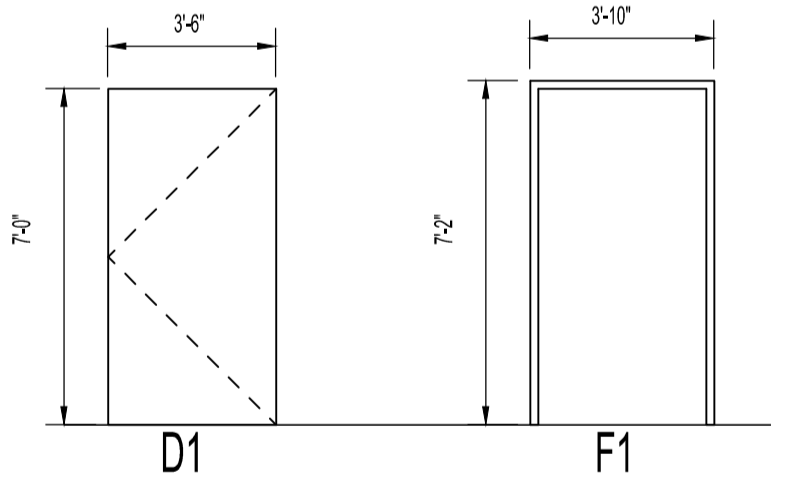
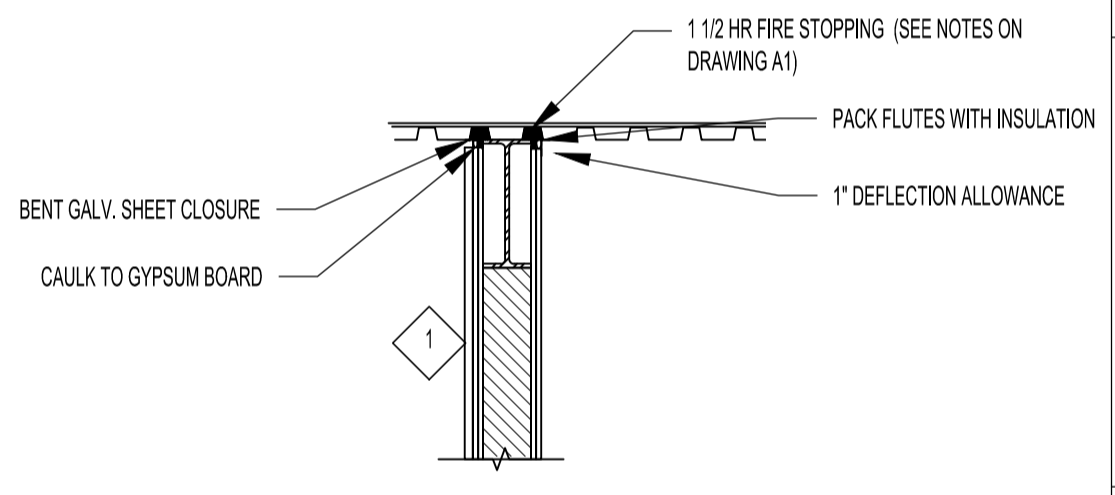
**HARDWARE**  
 DRAWER & DOOR PULLS: HAFELE 101.20.701 STEEL NICKEL MATTE @ 226MM LENGTHS  
 DRAWER SLIDES: ACCURIDE #3832 FULL EXTENSION SIDE MOUNT  
 HINGES: BLUM CLIP 170° SELF CLOSING NICKEL FINISH  
 RECESSED SHELF SUPPORTS: K&V PILASTER ZINC

**SINK**  
 QSL2020/7 - 3 HOLE - 1-1/2" DIAMETER, 4" CENTER-TO-CENTER FUN #101.0045.226  
 SIZE: 20 1/2" X 20" X 7"

**COUNTERTOP**  
 CEASARSTONE 1-1/4" INTENSE WHITE 6011

**BACKSPLASH**  
 MEROLA TILE 3"x6" TESSERA BLUE SMOLE

**NOTE:**  
 CONFIRM APPLIANCE DIMENSION



DOOR NO.	DOOR			FRAME			HARDWARE		GROUP	NOTES	
	TYPE	WIDTH	HEIGHT	THICK.	MATL.	FINISH	TYPE	FINISH			
D120-B	D1	3'-6"	7'-0"	1 1/2"	H.M.	PT	F1	P.S.	PT	1	1.0H FRR

**ABBREVIATIONS**  
 H.M.-HOLLOW METAL PT.-PAINT P.S.-PRESSED STEEL

**HARDWARE STANDARD:**  
 SHLAGE, LEVER TYPE, SATIN NICKEL FINISH

**GROUP # 1**  
 1.0 HR FIRE RATED DOOR  
 3 - HINGES NRP  
 1 - LOCKSET (PASSAGE)  
 1 - CLOSER  
 1 - KICKPLATE  
 2 - SMOKE SEAL W21 x 84 BLK  
 1 - SMOKE SEAL W21 x 42 BLK  
 1 - DOOR SWEEP  
 1 - FLOOR STOP

**WALLS:**

1 NBC Table A-9.10.3.1.A S9b 1.5H FRR  
 (2) LAYERS 1/2" TYPE "X" GWB  
 -HIGH IMPACT DW  
 6" STEEL STUDS 20Ga @12" O.C.  
 150MM THK. MINERAL FIBRE ABSORPTIVE MATERIALS  
 (2) LAYERS 1/2" TYPE "X" GWB  
 -HIGH IMPACT DW  
 METAL LINER 22Ga(GARAGE SIDE ONLY)  
 UP TO U/S OF DECK

2 ULC X518 2HR FRR  
 (2) LAYER 1/2" TYPE "X" GWB  
 -HIGH IMPACT  
 1-5/8" STEEL STUDS  
 ALL AROUND STEEL COLUMN  
 UP TO UIS DECK  
 METAL LINER 22Ga(GARAGE SIDE ONLY)

ORIGINAL STAMPED BY: NEIL COOPER, NCA  
 DATE: 2019.09.18

No.	REVISION/DESCRIPTION	BY	DATE
0	ISSUED FOR CONSTRUCTION	AR	SEPT 26 2019

**DRAWN** AR **CHECKED** NC **DESIGNED** NC **APPROVED** NC  
 DATE 2019.09.18 **USER APPROVAL**

THE CITY OF WINNIPEG  
 PLANNING, PROPERTY AND  
 DEVELOPMENT DEPARTMENT  
 MUNICIPAL ACCOMMODATIONS DIVISION  
 3-65 GARRY STREET, R3C 4K4

**PROJECT**  
 PUBLIC WORKS SOUTH YARD  
 INTERIOR RENOVATIONS

1539 WAVERLEY STREET BID OPP: 944-2019

**SHEET TITLE**  
 DEMO PLAN, PROPOSED PLAN  
 SCHEDULES, DETAIL

**Neil Cooper Architect**  
 109-374 River Avenue, Winnipeg, Manitoba R3L 0E4

SCALE AS SHOWN PROJECT No: 2018-018 SHEET No: A2