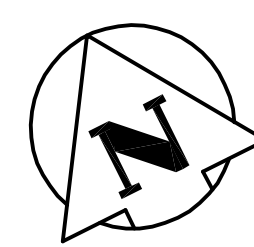
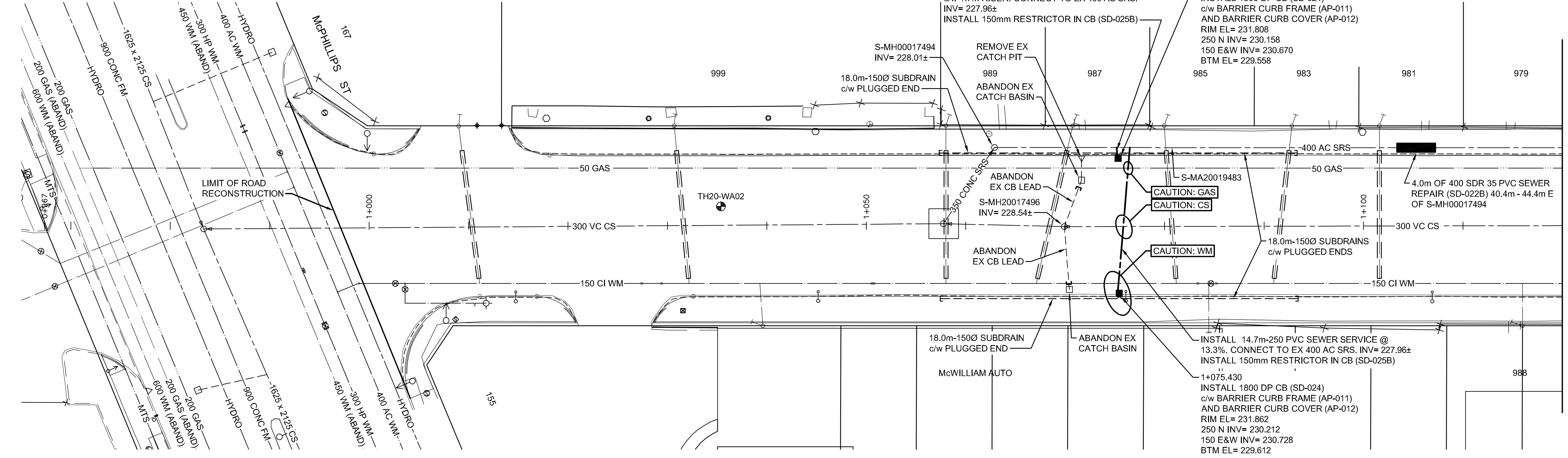
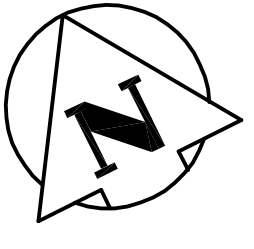
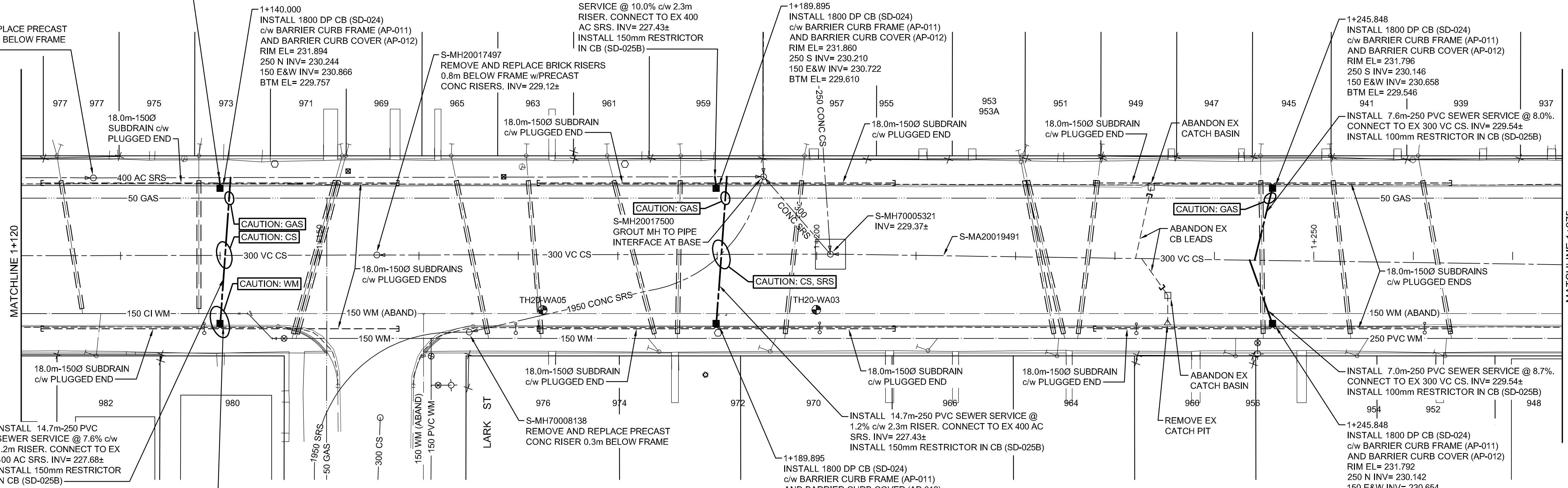


WILLIAM AVENUE



MATCHLINE 1+120

INSTALL 1.1m-250 PVC SEWER SERVICE @ 10.0%
c/w 2.1m RISER. CONNECT TO EX 400 AC SRS.
INV= 227.68±
INSTALL 150mm RESTRICTOR IN CB (SD-025B)



MATCHLINE 1+275
SEE DWG U-113

- NOTES:**
- ADJUST MANHOLE RIMS, VALVES AND HYDRANTS TO NEW GRADES WHERE REQUIRED.
 - EXISTING MANHOLE FRAMES AND COVERS TO BE REPLACED WITH NEW FRAMES AND COVERS WITHIN THE RECONSTRUCTION LIMITS. CONTRACTOR TO CONFIRM THE LOCATIONS OF ALL UTILITIES/SERVICES IN THE FIELD PRIOR TO CONSTRUCTION.
 - ALL NEW SEWER SERVICE PIPE TO BE TRENCHLESS INSTALLATION.
 - PROTECT INSULATION DURING INSTALLATION, TAKING CARE NOT TO DAMAGE DURING BACKFILL OPERATIONS.

ALL LONG SIDE WATER SERVICES WITHIN THE LIMITS OF THE RECONSTRUCTION SHALL BE INSULATED AS PER SPEC E-19

PLAN:

METRIC

WHOLE NUMBERS INDICATE MILLIMETRES
DECIMALIZED NUMBERS INDICATE METRES

WARNING

IF POWER EQUIPMENT OR EXPLOSIVES ARE TO BE USED FOR EXCAVATION ON THIS PROJECT THE CONTRACTOR MUST:
1) NOTIFY THE GAS COMPANY OF THE PROPOSED LOCATION OF EXCAVATION.
2) TAKE PRECAUTION TO AVOID DAMAGE TO GAS COMPANY INSTALLATIONS.
SEE PROVINCIAL REGULATION 140/92 FOR DETAILS

ENGINEERS GEOSCIENTISTS MANITOBA
Certificate of Authorization
Stantec Consulting Ltd.
No. 1301

EXISTING	LEGEND-PLAN	PROPOSED	EXISTING	LEGEND-PLAN	PROPOSED	EXISTING	LEGEND-PROFILE	PROPOSED
	WATERMAIN			HYDRO			PROFILE	
	HYDRANT			M.T.S.			NORTH OR WEST GUTTER	
	VALVE			CONCRETE			SOUTH OR EAST GUTTER	
	LAND DRAINAGE SEWER			ASPHALT			NORTH MEDIAN GUTTER	
	WASTE WATER SEWER			SIDEWALK			SOUTH MEDIAN GUTTER	
	MANHOLE			ASPHALT MILL & FILL			NORTH OR WEST P.L.	
	CATCH BASIN			STREET LIGHT			SOUTH OR EAST P.L.	
	CURB INLET/CATCH PIT			HYDRO POLE				
	TRANSIT STOP			SURVEY BAR				
	GAS			ELEVATION				
	PROPERTY LINE			SIDEWALK RAMP				

LOCATION APPROVED UNDERGROUND STRUCTURES

SUPV. U/G STRUCTURES COMMITTEE	DATE

NOTE:
LOCATION OF UNDERGROUND STRUCTURES AS SHOWN ARE BASED ON THE BEST INFORMATION AVAILABLE BUT NO GUARANTEE IS GIVEN THAT ALL EXISTING UTILITIES ARE SHOWN OR THAT THE GIVEN LOCATIONS ARE EXACT. CONFIRMATION OF EXISTENCE AND EXACT LOCATION OF ALL SERVICES MUST BE OBTAINED FROM THE INDIVIDUAL UTILITIES BEFORE PROCEEDING WITH CONSTRUCTION.

B.M. ELEV.	NO.	REVISIONS	DATE	BY

Stantec
500 - 311 Portage Avenue, Winnipeg MB Canada
www.stantec.com

DESIGNED BY	R.S.	CHECKED BY	R.S.
DRAWN BY	W.A.	APPROVED BY	S.R.S.
HOR. SCALE:	1:250	RELEASED FOR CONSTRUCTION:	
VERTICAL:	-	DATE	20/05/15

PRELIMINARY DRAWING

NOT TO BE USED FOR CONSTRUCTION

CONSULTANT DRAWING NO. U-112

THE CITY OF WINNIPEG
PUBLIC WORKS DEPARTMENT
ENGINEERING DIVISION

2021-2022 - SELKIRK AVE AND WILLIAM AVE
PAVEMENT RENEWALS
WILLIAM AVENUE
McPHILLIPS STREET TO STA 1+275
UNDERGROUND INFRASTRUCTURE

SHEET 23 OF 29
CAD FILE DRAWING NUMBER 08150u-112.dwg
CITY DRAWING NUMBER P-3534-6

N:\CADD\2021\2021-2022\113126150\0300_drawing\0302_sheet_112.dwg
 2021/03/01 14:14 PM by: [Name]