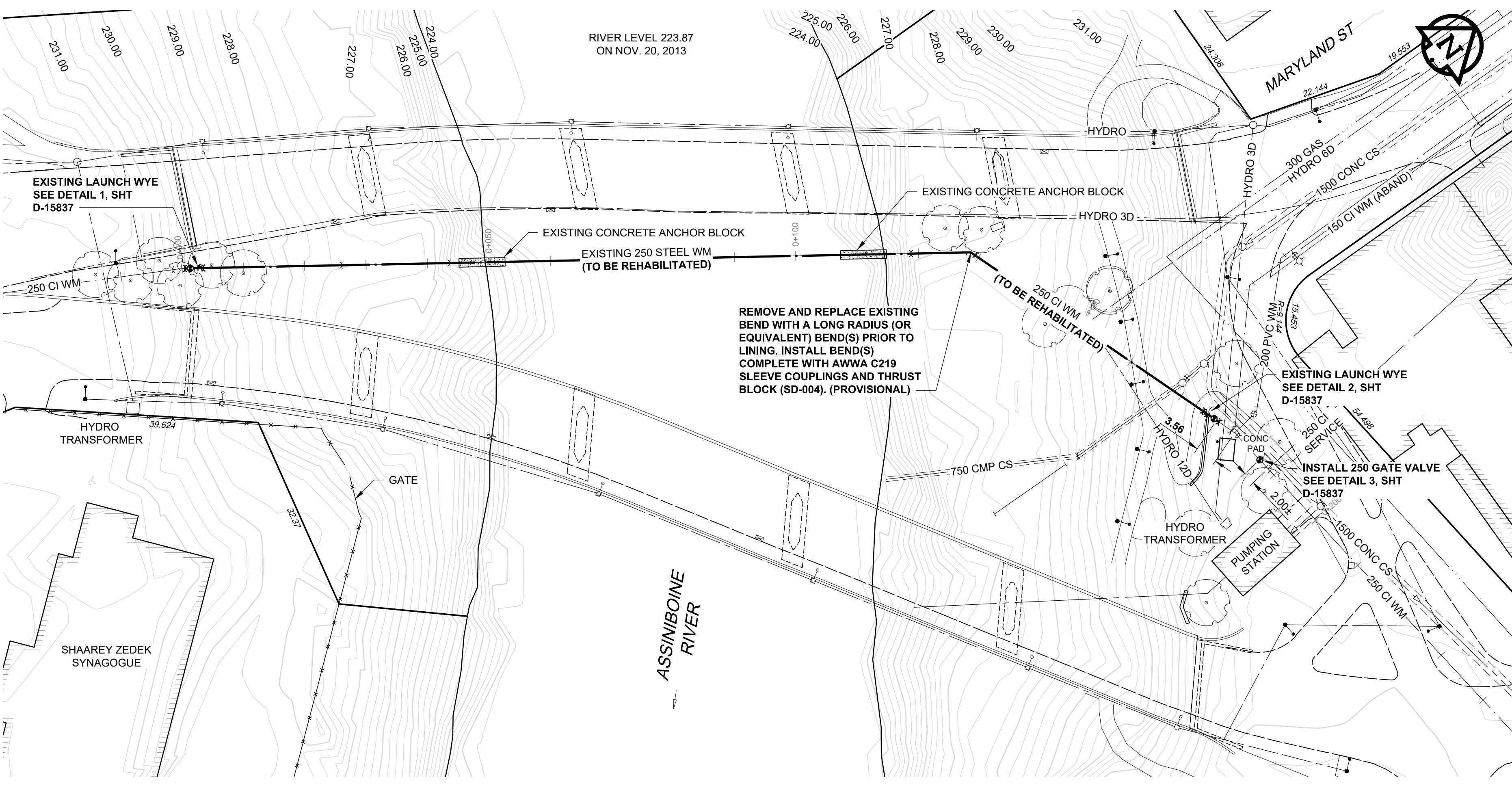
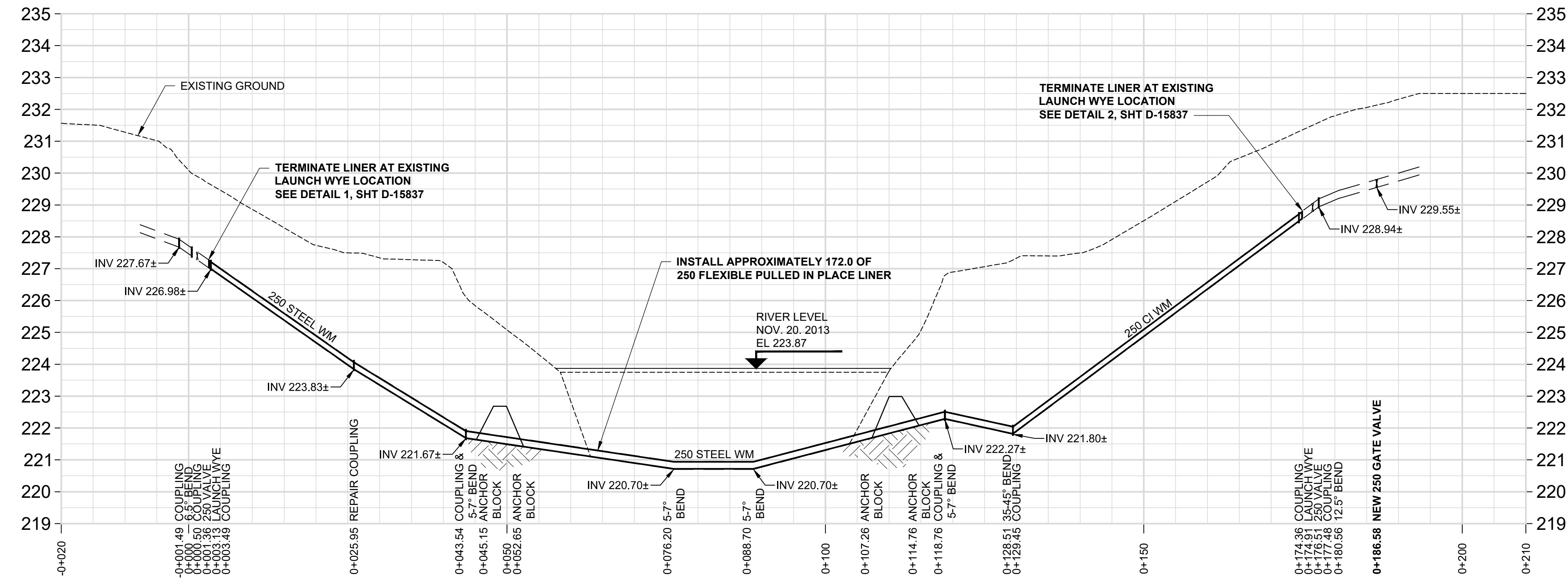


D SIZE 22" x 34" (559mm x 864mm)

PLOT: 4/8/2021 9:57:02 AM

AECOM FILE NAME: 60644615-SHT-30-0000-C-1001.dwg Saved By: ccooper@k

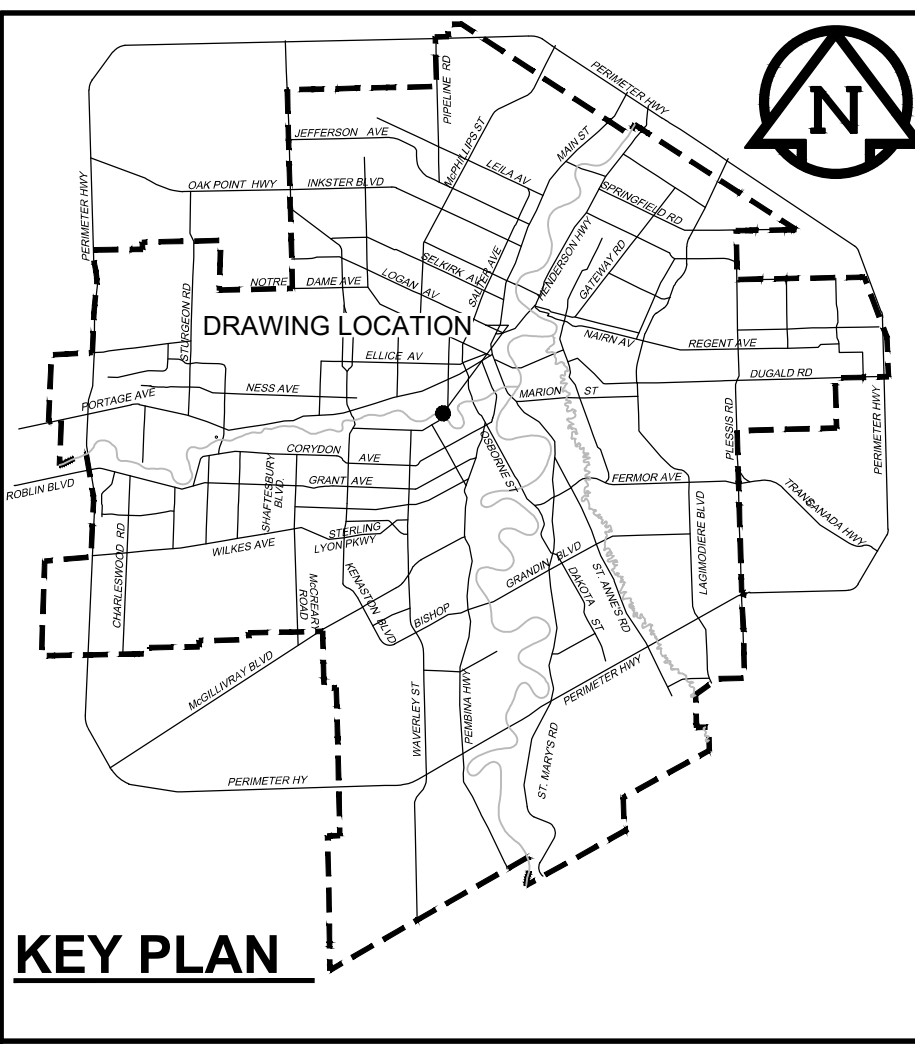


PLAN
Scale 1:500
0 12.5 25 mm

METRIC
WHOLE NUMBERS INDICATE MILLIMETRES
DECIMALIZED NUMBERS INDICATE METRES



SITE PLAN
Scale 1:1500
0 37.5 75 m



- CONSTRUCTION NOTES:**
- GATE VALVE INSTALLATION REQUIRED PRIOR TO ISOLATION OF THE CROSSING AND COMMENCEMENT OF WORK
 - COORDINATE GATE VALVE INSTALLATION AS PER SPECIFICATIONS
 - RESTORE SITE UPON COMPLETION OF WORK
 - REPAIR THE EXISTING CONCRETE SIDEWALK IN ACCORDANCE WITH SD-228A
 - PLACE SOD ON ALL DISTURBED GRASSED AREAS ABOVE NORMAL HIGH WATER MARK ON BOTH SIDES OF THE RIVER
 - SOUTH PIPELINE ACCESS THROUGH THE SHAAREY ZEDEK SYNAGOGUE PARKING LOT AND GATE. CONTRACTOR TO COORDINATE WITH THE CONTRACT ADMINISTRATOR FOR ACCESS.

ENGINEERS GEOSCIENTISTS MANITOBA
Certificate of Authorization
AECOM Canada Ltd.
No. 4671 Date: April 6, 2021

BID OPPORTUNITY NO. 114-2021

150 WM	WATERMAIN	150 WM	150 WM	CURB STOP	150 WM	WATERMAIN	150 WM
HYDRANT	VALVE	300 LDS	250 WWS	REDUCER	HYDRANT	HYDRANT	HYDRANT
LAND DRAINAGE SEWER	WASTE WATER SEWER	MANHOLE	CATCH BASIN	ANODE	LAND DRAINAGE SEWER	WASTE WATER SEWER	LAND DRAINAGE SEWER
WASTE WATER SEWER	MANHOLE	CATCH BASIN	CURB INLET	MTS	WASTE WATER SEWER	WASTE WATER SEWER	WASTE WATER SEWER
MANHOLE	CATCH BASIN	CURB INLET	CULVERT	GAS	PAVEMENT CROWN	N/W PROPERTY LINE	N/W PROPERTY LINE
CURB INLET	CULVERT	PIPE ABANDONMENTS	PIPE ABANDONMENTS	TESTHOLE	N/W PROPERTY LINE	S/E PROPERTY LINE	S/E PROPERTY LINE
CULVERT	PIPE ABANDONMENTS	PIPE ABANDONMENTS	PIPE ABANDONMENTS	LAMP STANDARD	N/W GUTTER	N/W GUTTER	N/W GUTTER
PIPE ABANDONMENTS	PIPE ABANDONMENTS	PIPE ABANDONMENTS	PIPE ABANDONMENTS	TREE	S/E GUTTER	S/E GUTTER	S/E GUTTER
PIPE ABANDONMENTS	PIPE ABANDONMENTS	PIPE ABANDONMENTS	PIPE ABANDONMENTS				
EXISTING	LEGEND - PLAN	NEW	EXISTING	LEGEND - PLAN	NEW	EXISTING	LEGEND - PROFILE

LOCATION APPROVED
UNDERGROUND STRUCTURES

SUPR. U/G STRUCTURES DATE COMMITTEE

NOTE:
LOCATION OF UNDERGROUND STRUCTURES AS SHOWN ARE BASED ON THE BEST INFORMATION AVAILABLE. BUT NO GUARANTEE IS GIVEN THAT ALL EXISTING UTILITIES ARE SHOWN OR THAT THE GIVEN LOCATIONS ARE EXACT. CONFIRMATION OF EXISTENCE AND EXACT LOCATION OF ALL SERVICES MUST BE OBTAINED FROM THE INDIVIDUAL UTILITIES BEFORE PROCEEDING WITH CONSTRUCTION.

NO.	ISSUED FOR CONSTRUCTION	21/04/06	KLC
NO.	REVISIONS	YYMMDD	BY

AECOM

DESIGNED BY: ADB
CHECKED BY: CCM
DRAWN BY: KLC
APPROVED BY: KWF

HOR. SCALE: 1:500
VERT. SCALE: 1:100

RELEASSED FOR CONSTRUCTION: [Signature]
DATE: April 7, 2021

PROFESSIONAL'S SEAL
PROVINCE OF MANITOBA
A.D. BRAUN
Member
24453
April 6, 2021
CONSULTANT DRAWING NO.
60644615-SHT-30-0000-C-1001

THE CITY OF WINNIPEG
WATER AND WASTE DEPARTMENT

MARYLAND WATER MAIN CROSSING REHABILITATION BY PULLED IN PLACE FLEXIBLE LINER

PLAN / PROFILE

SHEET 2 OF 3
CITY DRAWING NUMBER
D-15836
REV 0