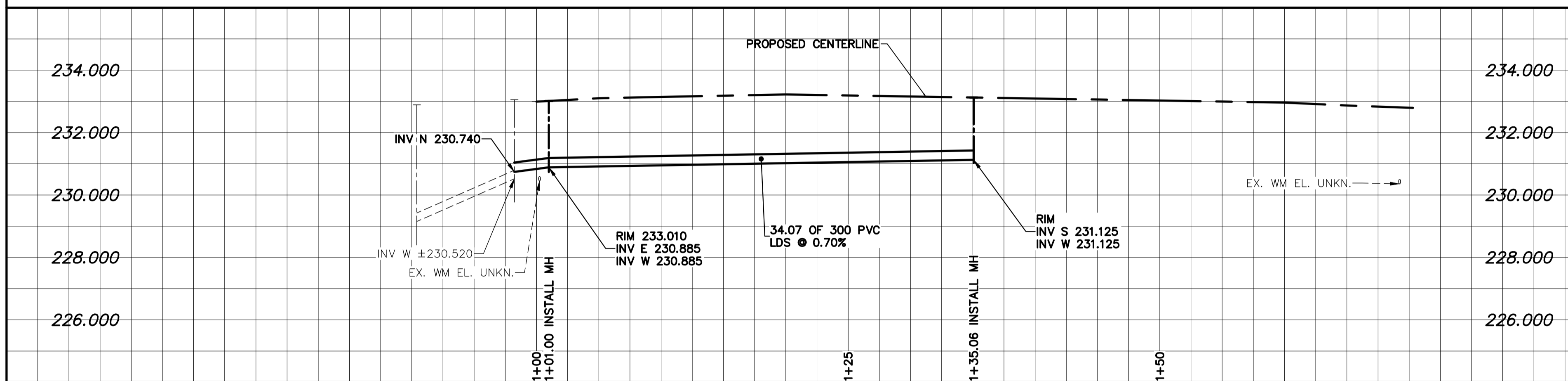


- NOTES:**
1. ALL WORK AND MATERIALS TO BE IN ACCORDANCE WITH THE LATEST REVISION OF THE CITY OF WINNIPEG STANDARD CONSTRUCTION SPECIFICATION.
 2. CONTRACTOR TO CONFIRM THE LOCATION OF ALL UTILITIES/SERVICES IN THE FIELD PRIOR TO CONSTRUCTION.
 3. CONTRACTOR TO AVOID DAMAGE TO EXISTING TREES WITHIN THE LIMITS OF THE ALLEY RIGHT OF WAY AS OUTLINED IN THE BID OPPORTUNITY.
 4. HYDRO POLES AND ANCHORS REQUIRING TEMPORARY SUPPORT TO BE DONE AT THE EXPENSE OF THE CONTRACTOR AS REQUIRED.
 5. WHERE UNSTABLE SUB-GRADES ARE ENCOUNTERED, ADDITIONAL EXCAVATION/SUB-BASE AND INSTALLATION OF GEOGRID TO BE DETERMINED BY THE CONTRACT ADMINISTRATOR AND CONSTRUCTED IN ACCORDANCE W/ CW-3110.
 6. PROPOSED ELEVATIONS GIVEN ARE FOR EDGE OF PAVEMENT.
 7. ISOLATE EXISTING HYDRO POLES AS PER SD-228C.
 8. RENEW CURBS AND SIDEWALK AS DIRECTED BY THE CONTRACT ADMINISTRATOR.
 9. MODIFIED BARRIER CURB TO BE CONSTRUCTED AT ALL BACK LANE RADIUS.
 10. ALL EXISTING PRIVATE APPROACHES TO BE RENEWED AS DIRECTED BY THE CONTRACT ADMINISTRATOR.
 11. ADJUSTMENTS TO PROPOSED CROSSFALL, WHERE REQUIRED, ARE TO BE DETERMINED BY THE CONTRACT ADMINISTRATOR TO SUIT EXISTING DRIVEWAYS, APPROACHES, ETC.
 12. ALL BOULEVARD RESTORATION TO BE SODDED UNLESS OTHERWISE NOTED.
 13. INSTALLATION OF LP CURBS AND THEIR LIMITS THROUGH PRIVATE APPROACHES TO BE DETERMINED BY THE CONTRACT ADMINISTRATOR.
 14. REMOVE, ADJUST, AND SUPPLY PRECAST SIDEWALK BLOCKS AS DIRECTED BY THE CONTRACT ADMINISTRATOR.

ALLEY PAVEMENT PROFILE
SCALE: 1:250 HOR
1:10 VER

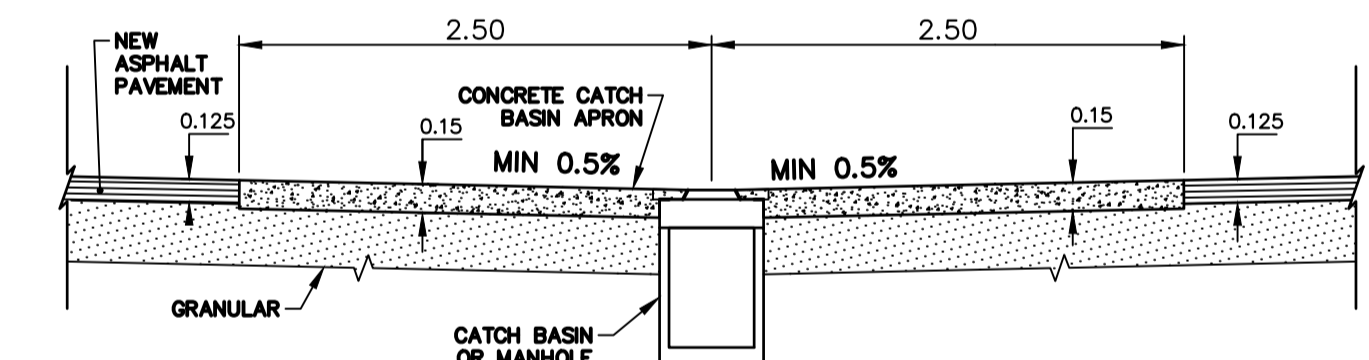
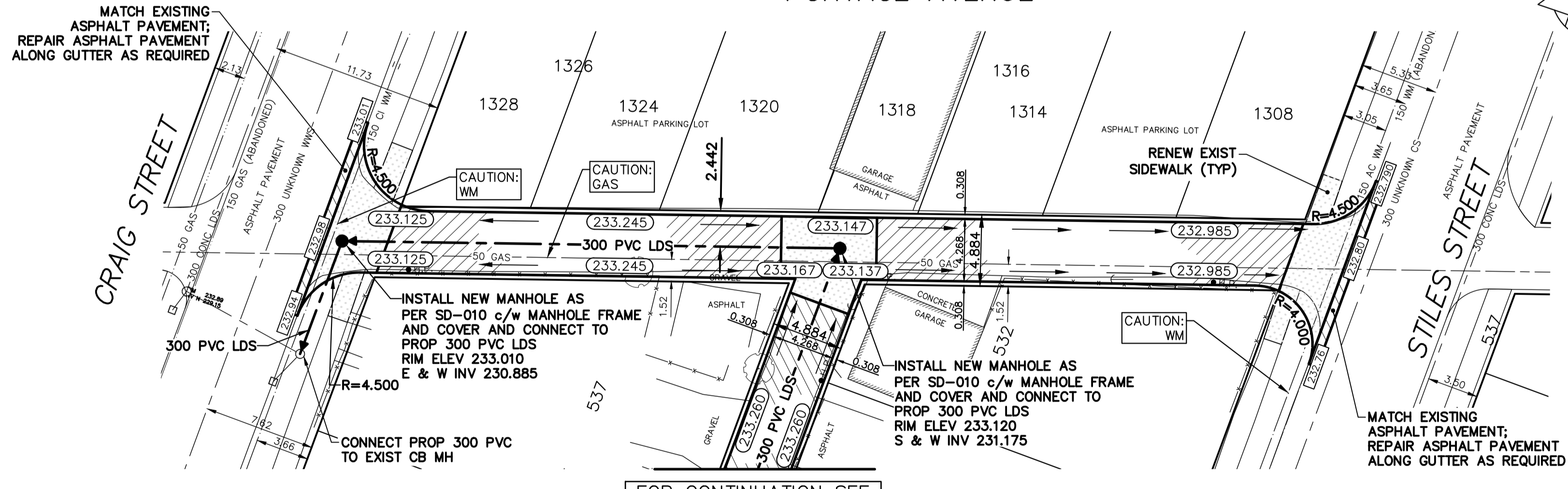


LAND DRAINAGE SEWER PROFILE
SCALE: 1:250 HOR
1:100 VER

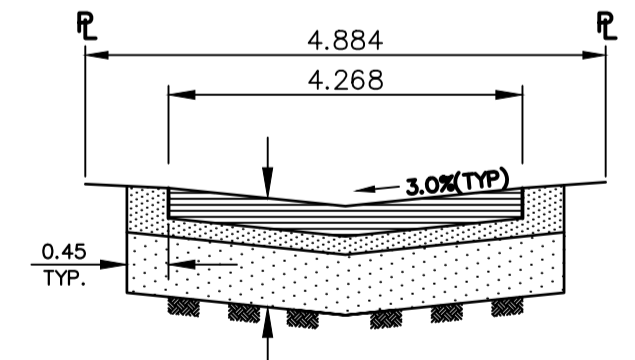
NOTE: CHAINAGES SHOWN ARE ALONG CL OF RIGHT-OF-WAY

THERE SHALL BE NO INCREASE IN CUMULATIVE PEAK FLOW ENTERING CS AND/OR SRS SYSTEMS AS A RESULT OF CONSTRUCTION WORKS SHOWN.

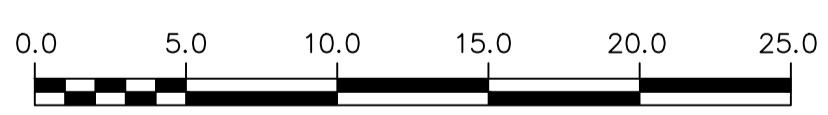
PORTAGE AVENUE



TYPICAL CATCHBASIN APRON DETAIL
SCALE: N.T.S.



TYPICAL ALLEY CROSS SECTION
SCALE: N.T.S.



FOR TENDER PURPOSES ONLY
NOT FOR CONSTRUCTION

FOR CONTINUATION SEE
DWG 20M-00885-00-26

WATERMAIN	CONCRETE/ASPHALT	M.T.S.	150 WM	WATERMAIN	150 WM	LOCATION APPROVED	B.M. TOP NUT HYDRANT AT THE SOUTH WEST CORNER OF THE PORTAGE AVENUE AND CRAIG STREET INTERSECTION ELEV. 233.665
HYDRANT	SIDEWALK	CONCRETE/ASPHALT	300 LDS	VALVE	300 LDS	UNDERGROUND STRUCTURES	
VALVE	CURB RAMP	CONCRETE/ASPHALT	250 WWS	LAND DRAINAGE SEWER	300 LDS		
CURB STOP	ELEVATIONS	CONCRETE/ASPHALT	(232.00)	WASTE WATER SEWER	250 WWS		
LAND DRAINAGE SEWER	PROPERTY LINE	CONCRETE/ASPHALT	(232.000)	CENTERLINE			
WASTE WATER SEWER	SURVEY BAR	CONCRETE/ASPHALT		SOUTH & EAST GUTTER			
CB LEAD	HYDRO POLE	CONCRETE/ASPHALT		NORTH & WEST GUTTER			
MANHOLE	STREET LIGHT	CONCRETE/ASPHALT		S & E GARAGE PAD			
CATCH BASIN	JOINTS	CONCRETE/ASPHALT		N & W GARAGE PAD			
GAS	ASPHALT REPAIR	CONCRETE/ASPHALT					
HYDRO		CONCRETE/ASPHALT					
EXISTING	LEGEND - PLAN	PROPOSED	EXISTING	LEGEND - PROFILE	PROPOSED		

3	ISSUED FOR TENDER	04/02/21	A.B.
2	WSP INTERNAL REVIEW	11/01/21	A.B.
1	PRELIMINARY DESIGN REVIEW	11/12/20	D.R.
NO	REVISIONS	DATE	BY

DESIGNED BY	A.B.	CHECKED BY	S.M.
DRAWN BY	D.R.	APPROVED BY	S.M.
HOR. SCALE:	1:250	RELEASED FOR CONSTRUCTION	
VERT. SCALE:	AS SHOWN		
DATE	DECEMBER 2020		

wsp

WSP Canada Incorporated
Suite 111 - 93 Lombard Ave
Winnipeg, MB R3B 3B1
t. 204.943.3178
f. 204.943.4948
www.wsp.com

NOT FOR CONSTRUCTION

CONSULTANT DRAWING NO.
20M-00885-00-27

THE CITY OF WINNIPEG
PUBLIC WORKS DEPARTMENT

2021 ALLEY RENEWALS
CRAIG ST / STILES ST ALLEY
FROM CRAIG ST TO STILES ST

ASPHALT PAVEMENT

CITY DRAWING NO.
LD-----

SHEET 1 OF 4

BID OPPORTUNITY
17-2021

ENGINEERS GEOSCIENTISTS MANITOBA

Certificate of Authorization
WSP Canada Inc.
No. 5750