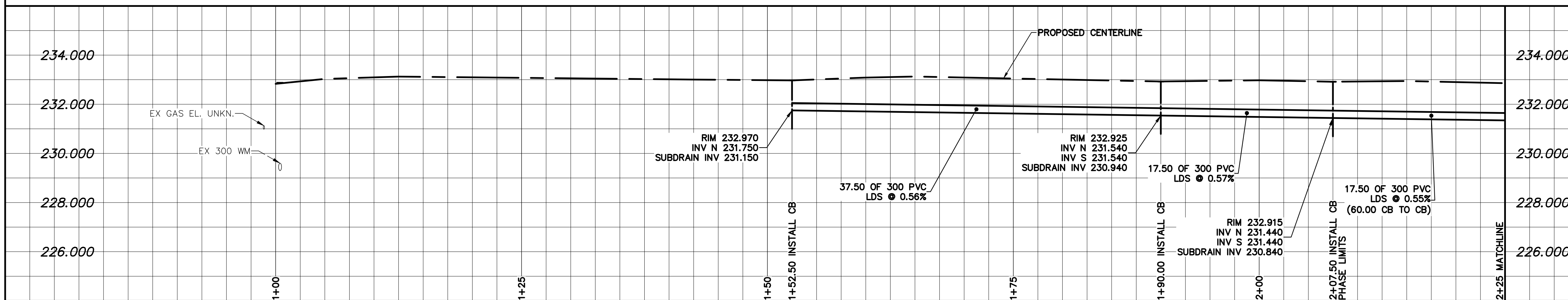
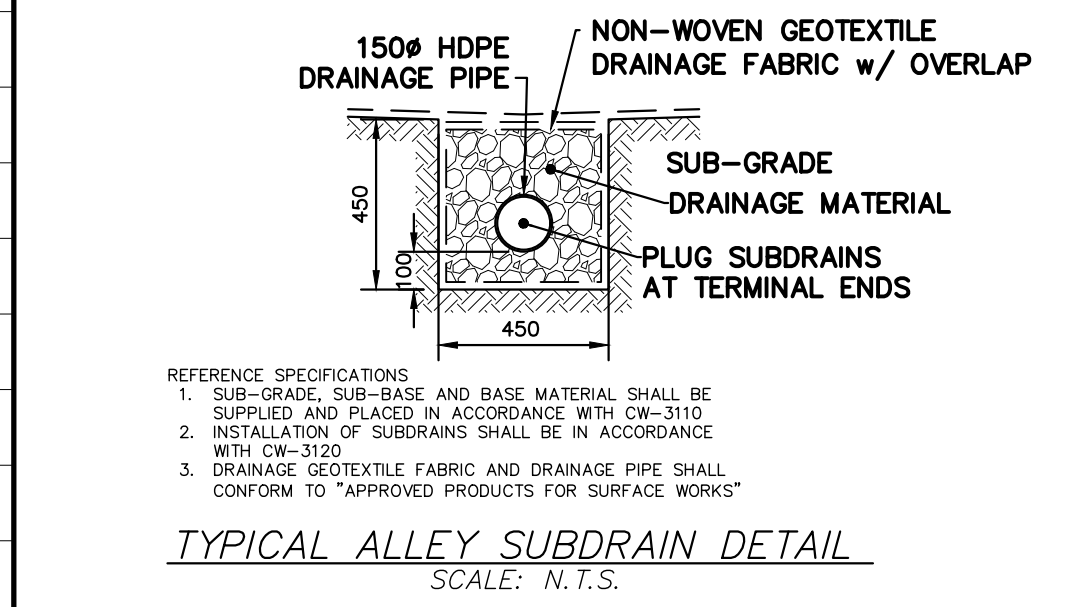


**ALLEY PAVEMENT PROFILE**  
SCALE: 1:250 HOR  
1:10 VER

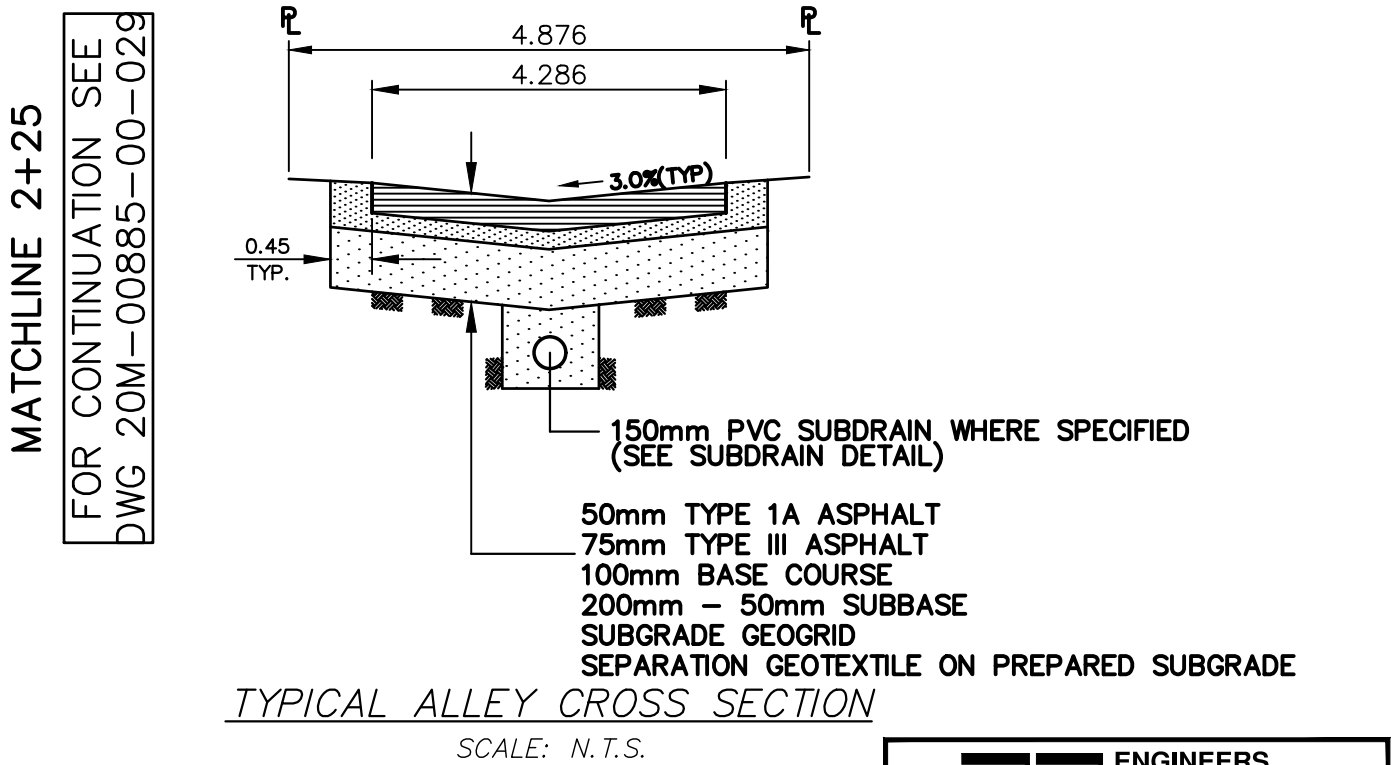
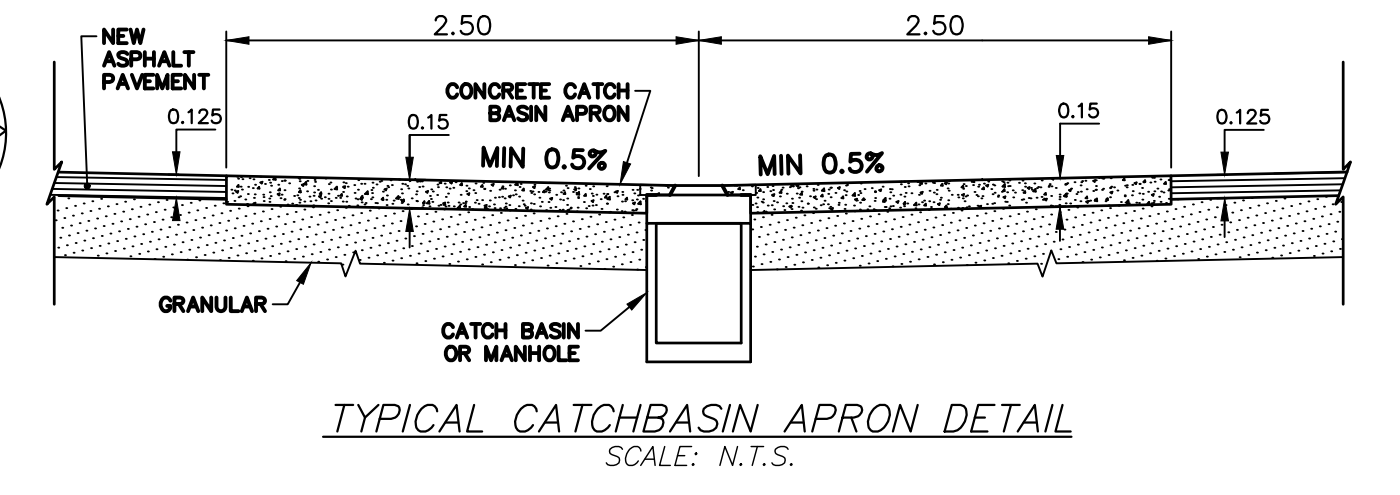
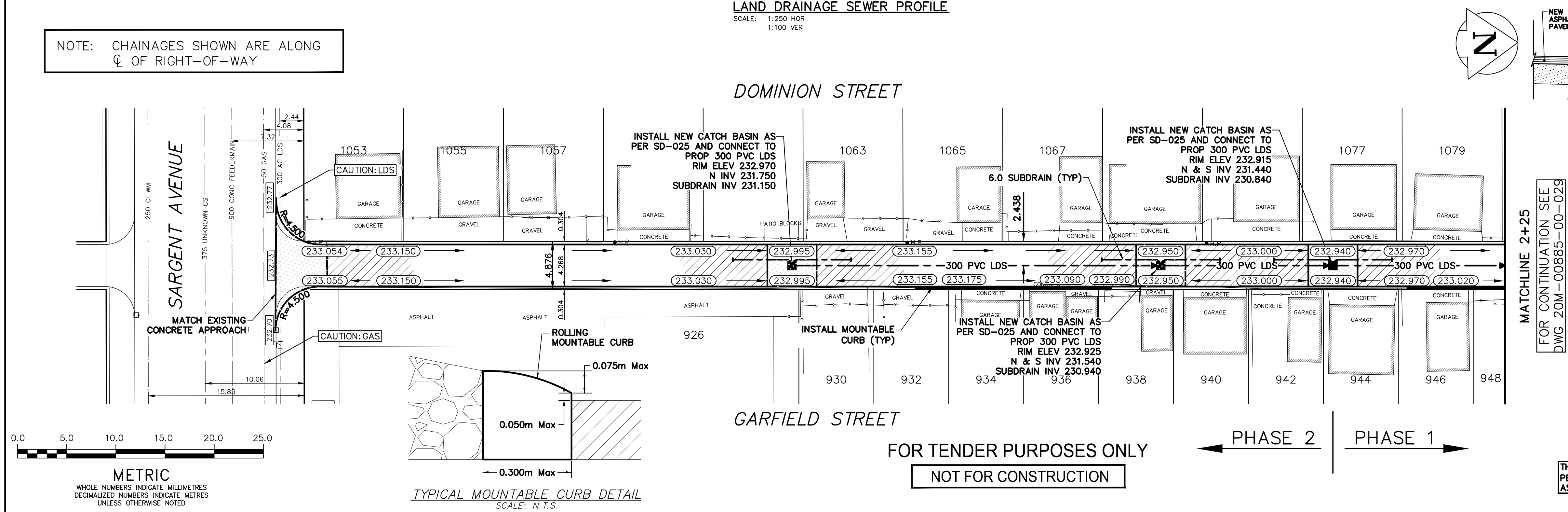
- NOTES:**
1. ALL WORK AND MATERIALS TO BE IN ACCORDANCE WITH THE LATEST REVISION OF THE CITY OF WINNIPEG STANDARD CONSTRUCTION SPECIFICATION.
  2. CONTRACTOR TO CONFIRM THE LOCATION OF ALL UTILITIES/SERVICES IN THE FIELD PRIOR TO CONSTRUCTION.
  3. CONTRACTOR TO AVOID DAMAGE TO EXISTING TREES WITHIN THE LIMITS OF THE ALLEY RIGHT OF WAY AS OUTLINED IN THE BID OPPORTUNITY.
  4. HYDRO POLES AND ANCHORS REQUIRING TEMPORARY SUPPORT TO BE DONE AT THE EXPENSE OF THE CONTRACTOR AS REQUIRED.
  5. WHERE UNSTABLE SUB-BASES ARE ENCOUNTERED, ADDITIONAL EXCAVATION/SUB-BASE AND INSTALLATION OF GEOGRID TO BE DETERMINED BY THE CONTRACT ADMINISTRATOR AND CONSTRUCTED IN ACCORDANCE W/ CW-3110.
  6. PROPOSED ELEVATIONS GIVEN ARE FOR EDGE OF PAVEMENT.
  7. ISOLATE EXISTING HYDRO POLES AS PER SD-228C.
  8. RENEW CURBS AND SIDEWALK AS DIRECTED BY THE CONTRACT ADMINISTRATOR.
  9. MODIFIED BARRIER CURBS TO BE CONSTRUCTED AT ALL BACK LANE RADI.
  10. ALL EXISTING PRIVATE APPROACHES TO BE RENEWED AS DIRECTED BY THE CONTRACT ADMINISTRATOR.
  11. ADJUSTMENTS TO PROPOSED CROSSFALL, WHERE REQUIRED, ARE TO BE DETERMINED BY THE CONTRACT ADMINISTRATOR TO SUIT EXISTING DRIVEWAYS, APPROACHES, ETC.
  12. ALL BOULEVARD RESTORATION TO BE SODDED UNLESS OTHERWISE NOTED.
  13. INSTALLATION OF LIP CURBS AND THEIR LIMITS THROUGH PRIVATE APPROACHES TO BE DETERMINED BY THE CONTRACT ADMINISTRATOR.
  14. REMOVE, ADJUST, AND SUPPLY PRECAST SIDEWALK BLOCKS AS DIRECTED BY THE CONTRACT ADMINISTRATOR.



**LAND DRAINAGE SEWER PROFILE**  
SCALE: 1:250 HOR  
1:100 VER



NOTE: CHAINAGES SHOWN ARE ALONG CL OF RIGHT-OF-WAY



**TYPICAL MOUNTABLE CURB DETAIL**  
SCALE: N.T.S.

FOR TENDER PURPOSES ONLY  
NOT FOR CONSTRUCTION

THERE SHALL BE NO INCREASE IN CUMULATIVE PEAK FLOW ENTERING CS AND/OR SRS SYSTEMS AS A RESULT OF CONSTRUCTION WORKS SHOWN.

**ENGINEERS GEOSCIENTISTS MANITOBA**  
Certificate of Authorization  
WSP Canada Inc.  
No. 5750

EXISTING	LEGEND - PLAN	PROPOSED	EXISTING	LEGEND - PLAN	PROPOSED	EXISTING	LEGEND - PROFILE	PROPOSED
---	WATERMAIN	---	---	M.T.S.	---	---	150 WM	---
---	HYDRANT	---	---	CONCRETE/ASPHALT	---	---	150 WM	---
---	VALVE	---	---	SIDEWALK	---	---	300 LDS	---
---	CURB STOP	---	---	CURB RAMP	---	---	250 WWS	---
---	LAND DRAINAGE SEWER	---	---	ELEVATIONS	(232.000)	---	300 LDS	---
---	WASTE WATER SEWER	---	---	PROPERTY LINE	---	---	250 WWS	---
---	CB LEAD	---	---	HYDRO POLE	---	---	---	---
---	MANHOLE	---	---	STREET LIGHT	---	---	---	---
---	CATCH BASIN	---	---	JOINTS	---	---	---	---
---	GAS	---	---	ASPHALT REPAIR	---	---	---	---
---	HYDRO	---	---	---	---	---	---	---

**LOCATION APPROVED UNDERGROUND STRUCTURES**

SUPV. U/G COMMITTEE	STRUCTURES	DATE
---	---	---

NOTE:  
LOCATION OF UNDERGROUND STRUCTURES AS SHOWN ARE BASED ON THE BEST INFORMATION AVAILABLE BUT NO GUARANTEE IS GIVEN THAT ALL EXISTING UTILITIES ARE SHOWN OR THAT THE GIVEN LOCATIONS ARE EXACT. CONFIRMATION OF EXISTING AND EXACT LOCATION OF ALL SERVICES MUST BE OBTAINED FROM THE INDIVIDUAL UTILITIES BEFORE PROCEEDING WITH CONSTRUCTION.

**B.M. TOP NUT OF HYDRANT AT THE SOUTH EAST CORNER OF THE GARFIELD STREET AND SARGENT AVENUE INTERSECTION ELEV. 233.654**

NO.	ISSUED FOR TENDER	DATE	BY
3	ISSUED FOR TENDER	04/02/21	A.B.
2	WSP INTERNAL REVIEW	11/01/21	A.B.
1	PRELIMINARY DESIGN REVIEW	11/12/20	B.R.

**wsp**

DESIGNED BY	CHECKED BY
A.B.	S.M.
DRAWN BY	APPROVED BY
D.R.	S.M.

HOR. SCALE: 1:250  
VERT. SCALE: AS SHOWN  
DESIGNED 2020

**NOT FOR CONSTRUCTION**

CONSULTANT DRAWING NO.  
20M-00885-00-28

**THE CITY OF WINNIPEG**  
PUBLIC WORKS DEPARTMENT

2021 ALLEY RENEWALS  
DOMINION ST / GARFIELD ST ALLEY  
FROM SARGENT AVENUE TO STA 2+25

ASPHALT PAVEMENT

CITY DRAWING NO.  
LD-  
SHEET 1 OF 3

BID OPPORTUNITY  
17-2021