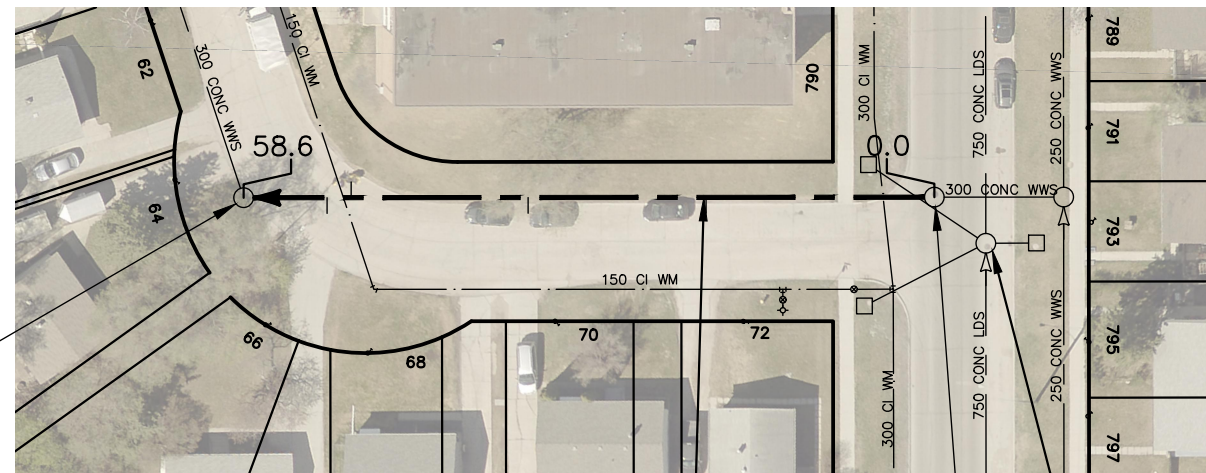
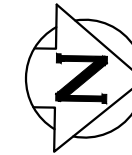


ARUNDEL ROAD

ELIZABETH RD



S-MH50005916  
RIM 231.19  
INV W 227.60  
INV N 227.60

58.6 OF 300 CONC WWS TO BE LINED  
S-MA50006906

REPLACE BENCHING

S-MH70058395  
RIM  
INV S 227.70  
INV N 227.72

SEWER JUNCTION INFORMATION FROM SEWER VIDEO INSPECTION		
SEWER ID S-MA50006906		
DISTANCE FROM MH ID S-MH70058395		
DISTANCE	DIAMETER	CLOCK
21.8	150	11
38.8	150	11
55.7	150	2
58.0	150	11

**WARNING**

IF POWER EQUIPMENT OR EXPLOSIVES ARE TO BE USED FOR EXCAVATION ON THIS PROJECT THE CONTRACTOR MUST:

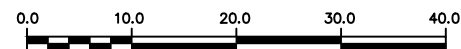
- 1) NOTIFY THE GAS COMPANY OF THE PROPOSED LOCATION OF EXCAVATION.
- 2) TAKE PRECAUTION TO AVOID DAMAGE TO GAS COMPANY INSTALLATIONS.

SEE PROVINCIAL REGULATION 210/72 FOR DETAILS

FOR INDEX SEE  
12674

**METRIC**

WHOLE NUMBERS INDICATE MILLIMETRES  
DECIMALIZED NUMBERS INDICATE METRES



LOCATION APPROVED  
UNDERGROUND STRUCTURES

B.M.  
ELEV.

SUPV. U/G STRUCTURES COMMITTEE DATE

NOTE:

LOCATION OF UNDERGROUND STRUCTURES AS SHOWN ARE BASED ON THE BEST INFORMATION AVAILABLE BUT NO GUARANTEE IS GIVEN THAT ALL EXISTING UTILITIES ARE SHOWN OR THAT THE GIVEN LOCATIONS ARE EXACT. CONFIRMATION OF EXISTENCE AND EXACT LOCATION OF ALL SERVICES MUST BE OBTAINED FROM THE INDIVIDUAL UTILITIES BEFORE PROCEEDING WITH CONSTRUCTION.

NO.	REVISIONS	DATE	BY

DESIGNED BY	SC	CHECKED BY	SC
DRAWN BY	AJ	APPROVED BY	KZ
SCALE:		RELEASED FOR CONSTRUCTION	
HORIZONTAL	1:750	<b>K.ZUREK</b>	
VERTICAL		DATE	2021-04-16
PLOT DATE: 2021 04 16			

ENGINEER'S SEAL

ORIGINAL  
SIGNED BY  
**S.R.J.  
COURNOYER**  
2021/04/16

CONSULTANT DRAWING NUMBER



**THE CITY OF WINNIPEG**

WATER AND WASTE DEPARTMENT  
ENGINEERING DIVISION

2021 SEWER RENEWALS by CIPP LINING  
CONTRACT No. 9

**ARUNDEL ROAD**

MH AT ELIZABETH ROAD TO  
MH AT ARUNDEL ROAD (S LEG)

SHEET 4 OF 57

CITY DRAWING NUMBER

12677