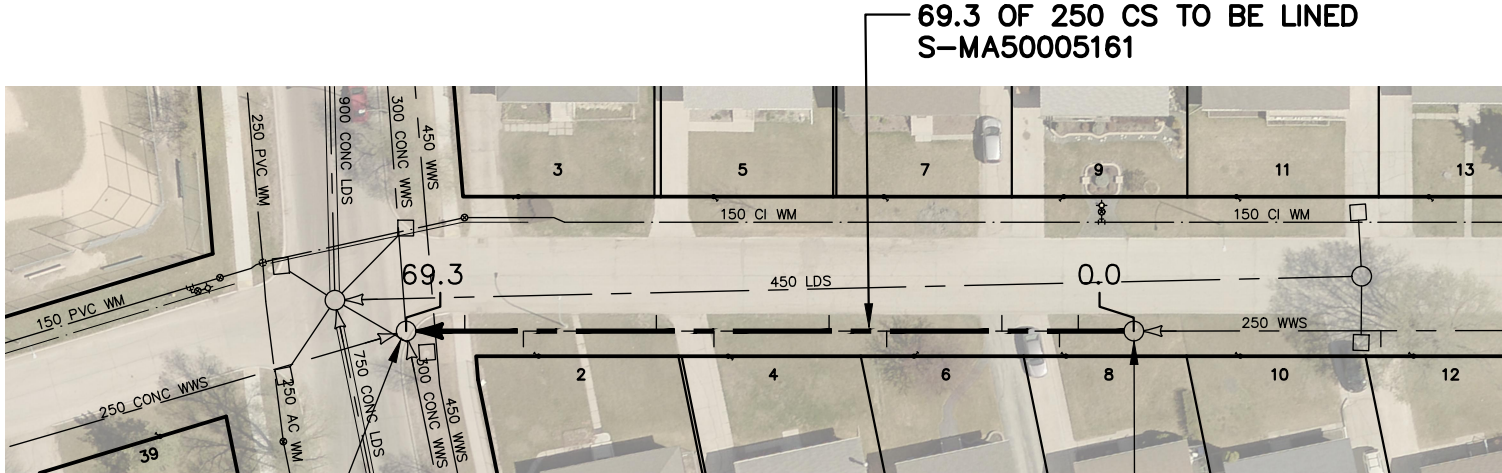


# CASCADE BAY



SEWER JUNCTION INFORMATION FROM SEWER VIDEO INSPECTION		
SEWER ID S-MA50005161		
DISTANCE FROM MH ID S-MH50004402		
DISTANCE	DIAMETER	CLOCK
5.3	150	1
7.1	150	10
12.6	150	2
23.6	150	11
29.1	150	2
40.1	150	11
45.6	150	2
58.3	150	11
63.9	150	1

S-MH50004396  
RIM 231.02  
INV N 225.80  
INV E 226.37  
INV S 225.80  
INV W 227.10

AUTUMNWOOD  
DR

S-MH50004402  
RIM 231.50  
INV E 227.60  
INV W 227.60

**WARNING**

IF POWER EQUIPMENT OR EXPLOSIVES ARE TO BE USED FOR EXCAVATION ON THIS PROJECT THE CONTRACTOR MUST:

- 1) NOTIFY THE GAS COMPANY OF THE PROPOSED LOCATION OF EXCAVATION.
- 2) TAKE PRECAUTION TO AVOID DAMAGE TO GAS COMPANY INSTALLATIONS.

SEE PROVINCIAL REGULATION 210/72 FOR DETAILS

FOR INDEX SEE 12674

**METRIC**

WHOLE NUMBERS INDICATE MILLIMETRES  
DECIMALIZED NUMBERS INDICATE METRES



LOCATION APPROVED  
UNDERGROUND STRUCTURES

SUPV. U/G STRUCTURES COMMITTEE DATE

NOTE:  
LOCATION OF UNDERGROUND STRUCTURES AS SHOWN ARE BASED ON THE BEST INFORMATION AVAILABLE BUT NO GUARANTEE IS GIVEN THAT ALL EXISTING UTILITIES ARE SHOWN OR THAT THE GIVEN LOCATIONS ARE EXACT. CONFIRMATION OF EXISTENCE AND EXACT LOCATION OF ALL SERVICES MUST BE OBTAINED FROM THE INDIVIDUAL UTILITIES BEFORE PROCEEDING WITH CONSTRUCTION.

B.M. ELEV.			
NO.	REVISIONS	DATE	BY

DESIGNED BY	SC	CHECKED BY	SC
DRAWN BY	AJ	APPROVED BY	KZ
SCALE:		RELEASED FOR CONSTRUCTION	
HORIZONTAL	1:750	<b>K.ZUREK</b>	
VERTICAL		DATE	2021-04-16
DATE		2021 04 16	
PLOT DATE: 2021 04 16			

ENGINEER'S SEAL	
ORIGINAL SIGNED BY <b>S.R.J. COURNOYER</b> 2021/04/16	
CONSULTANT DRAWING NUMBER	
-	

**THE CITY OF WINNIPEG**  
WATER AND WASTE DEPARTMENT  
ENGINEERING DIVISION

2021 SEWER RENEWALS BY CIPP LINING  
CONTRACT No.9  
**CASCADE BAY**  
2ND MH W OF CASCADE BAY (E LEG) TO  
MH AT AUTUMNWOOD DRIVE

SHEET **16** OF **57**  
CITY DRAWING NUMBER  
**12689**