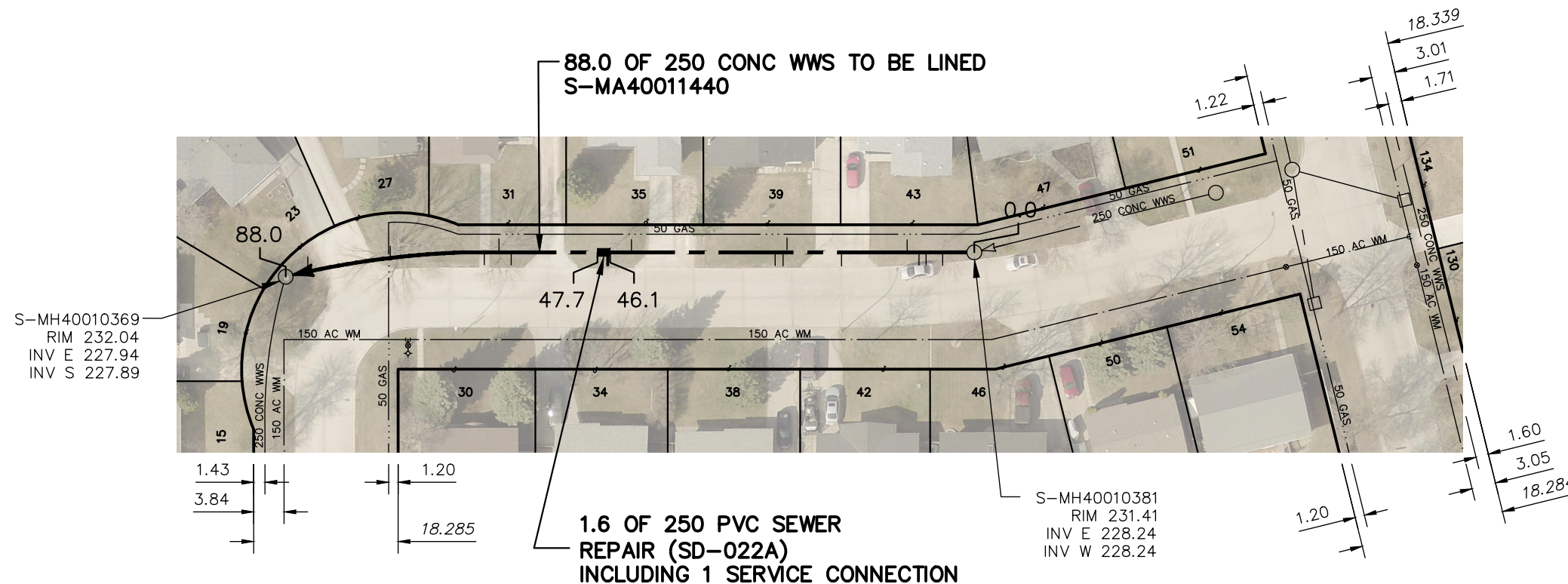


# GILLIES CRESCENT



SEWER JUNCTION INFORMATION FROM SEWER VIDEO INSPECTION  
SEWER ID S-MA40011440

DISTANCE FROM MH ID S-MH40010381		
DISTANCE	DIAMETER	CLOCK
4.0	100	10
6.1	100	10
7.0	100	10
8.5	100	2
16.8	100	10
23.7	100	2
24.2	100	10
25.2	100	10
43.4	100	2
45.9	100	10

\*\*\*\*REVERSAL REQUIRED\*\*\*\*

SEWER JUNCTION INFORMATION FROM SEWER VIDEO INSPECTION  
SEWER ID S-MA40011440

DISTANCE FROM MH ID S-MH40010369		
DISTANCE	DIAMETER	CLOCK
2.8	100	10
13.3	100	10
25.1	100	2
27.0	100	10
28.5	100	2

\*\*\*\*REVERSAL REQUIRED\*\*\*\*

## WARNING

IF POWER EQUIPMENT OR EXPLOSIVES ARE TO BE USED FOR EXCAVATION ON THIS PROJECT THE CONTRACTOR MUST:

- 1) NOTIFY THE GAS COMPANY OF THE PROPOSED LOCATION OF EXCAVATION.
- 2) TAKE PRECAUTION TO AVOID DAMAGE TO GAS COMPANY INSTALLATIONS.

SEE PROVINCIAL REGULATION 210/72 FOR DETAILS

FOR INDEX SEE  
12674

## METRIC

WHOLE NUMBERS INDICATE MILLIMETRES  
DECIMALIZED NUMBERS INDICATE METRES



LOCATION APPROVED  
UNDERGROUND STRUCTURES

B.M.  
ELEV.

SUPV. U/G STRUCTURES COMMITTEE DATE

NOTE:

LOCATION OF UNDERGROUND STRUCTURES AS SHOWN ARE BASED ON THE BEST INFORMATION AVAILABLE BUT NO GUARANTEE IS GIVEN THAT ALL EXISTING UTILITIES ARE SHOWN OR THAT THE GIVEN LOCATIONS ARE EXACT. CONFIRMATION OF EXISTENCE AND EXACT LOCATION OF ALL SERVICES MUST BE OBTAINED FROM THE INDIVIDUAL UTILITIES BEFORE PROCEEDING WITH CONSTRUCTION.

NO.	REVISIONS	DATE	BY

DESIGNED BY	SC	CHECKED BY	SC
DRAWN BY	AJ	APPROVED BY	KZ
SCALE:		RELEASED FOR CONSTRUCTION	
HORIZONTAL	1:750	K.ZUREK	
VERTICAL			
DATE	2021 04 16	DATE	2021-04-16

ENGINEER'S SEAL

ORIGINAL  
SIGNED BY  
S.R.J.  
COURNOYER  
2021/04/16

CONSULTANT DRAWING NUMBER



## THE CITY OF WINNIPEG

WATER AND WASTE DEPARTMENT  
ENGINEERING DIVISION

2021 SEWER RENEWALS BY CIPP LINING  
CONTRACT No.9

GILLIES CRESCENT  
2ND MH W OF HATCHER ROAD TO  
3RD MH W OF HATCHER ROAD

SHEET 30 OF 57

CITY DRAWING NUMBER

12705

PLOT DATE: 2021 04 16

BID OPPORTUNITY: 218-2021  
CONTRACT NUMBER: 9

FILE PATH: R:\DRAWINGS\SEWER\2021 RENEWALS\CIPP LINING\CONTRACT #9\Construction Dwg\  
FILE NAME: GILLIES CR.dwg