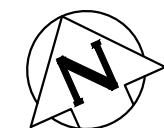
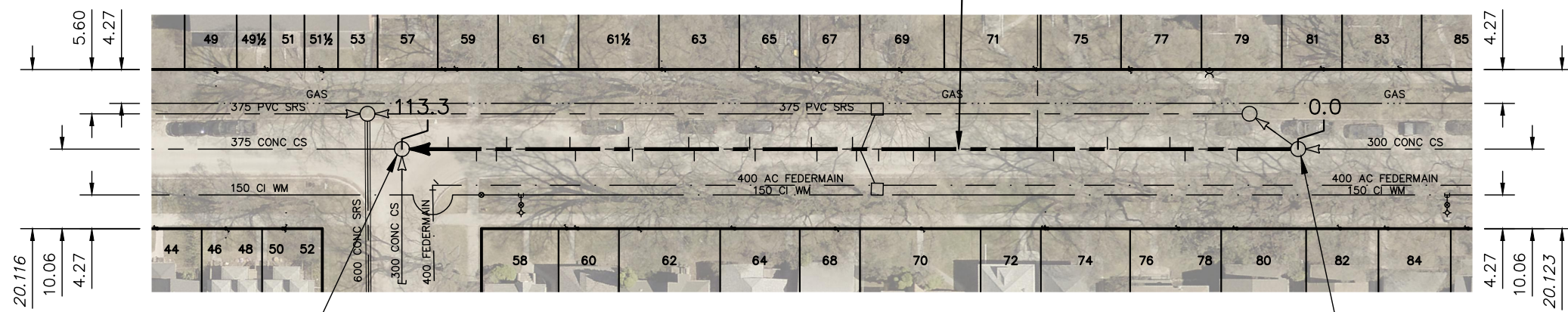


MARTIN AVENUE WEST



113.3 OF 375 CONC CS TO BE LINED
S-MA40005190



S-MH40004729
RIM 228.32
INV E 225.46
INV S 225.35
INV W 225.46

BEATRICE ST

S-MH40004697
RIM 228.26
INV E 225.91
INV W 225.91
INV N 225.65

SEWER JUNCTION INFORMATION FROM SEWER VIDEO INSPECTION		
SEWER ID S-MA40005190		
DISTANCE FROM MH ID S-MH40004697		
DISTANCE	DIAMETER	CLOCK
7.7	150	10
14.3	150	10
16.2	150	2
24.1	150	2
30.9	150	10
33.0	250	1
45.9	150	10
46.6	150	2
48.6	250	9
53.0	150	10
55.8	250	10
56.3	250	2
60.8	150	11
61.5	150	1
68.6	150	11
69.3	150	1
76.3	150	11
77.0	150	1
84.1	150	10
84.6	150	2
91.3	150	10
92.0	150	1
100.0	150	1
101.3	150	11
103.8	150	10
107.4	150	2

WARNING

IF POWER EQUIPMENT OR EXPLOSIVES ARE TO BE USED FOR EXCAVATION ON THIS PROJECT THE CONTRACTOR MUST:

- 1) NOTIFY THE GAS COMPANY OF THE PROPOSED LOCATION OF EXCAVATION.
- 2) TAKE PRECAUTION TO AVOID DAMAGE TO GAS COMPANY INSTALLATIONS.

SEE PROVINCIAL REGULATION 210/72 FOR DETAILS

FOR INDEX SEE 12674

METRIC

WHOLE NUMBERS INDICATE MILLIMETRES
DECIMALIZED NUMBERS INDICATE METRES



LOCATION APPROVED
UNDERGROUND STRUCTURES

B.M. ELEV.			
NO.	REVISIONS	DATE	BY

DESIGNED BY	SC	CHECKED BY	SC
DRAWN BY	AJ	APPROVED BY	KZ
SCALE:		RELEASED FOR CONSTRUCTION	
HORIZONTAL	1:750	K.ZUREK	
VERTICAL		DATE	2021-04-16
PLOT DATE: 2021 04 16			

ENGINEER'S SEAL

ORIGINAL SIGNED BY
S.R.J. COURNOYER
2021/04/16

CONSULTANT DRAWING NUMBER

-



THE CITY OF WINNIPEG
WATER AND WASTE DEPARTMENT
ENGINEERING DIVISION

2021 SEWER RENEWALS BY CIPP LINING
CONTRACT No.9
MARTIN AVENUE WEST
2ND MH W OF HENDERSON HIGHWAY TO
MH AT BEATRICE STREET

SHEET **39** OF **57**
CITY DRAWING NUMBER
12714

SUPV. U/G STRUCTURES COMMITTEE DATE

NOTE:
LOCATION OF UNDERGROUND STRUCTURES AS SHOWN ARE BASED ON THE BEST INFORMATION AVAILABLE BUT NO GUARANTEE IS GIVEN THAT ALL EXISTING UTILITIES ARE SHOWN OR THAT THE GIVEN LOCATIONS ARE EXACT. CONFIRMATION OF EXISTENCE AND EXACT LOCATION OF ALL SERVICES MUST BE OBTAINED FROM THE INDIVIDUAL UTILITIES BEFORE PROCEEDING WITH CONSTRUCTION.