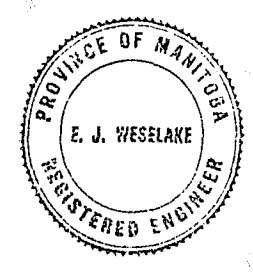


REVISION	DATE	DESCRIPTION	BY
1	FEB 9/51	TO INCLUDE ALL REVISIONS SHOWN ON 5-504 (SHEET 1) AND 5-505 (SHEET 2) DIMENSIONS FOR 4" STEEL BASE TO INCLUDE REVISIONS AT WALL TO THE WALL VERTICAL DIMENSIONS	84
2	MAY 5/51	CHANGES ADDED TO SECT 1-1 SECT 2-2 SECT B-B WALL STEEL REVISION IN ALL SECTIONS SECT H-H ADDED.	84



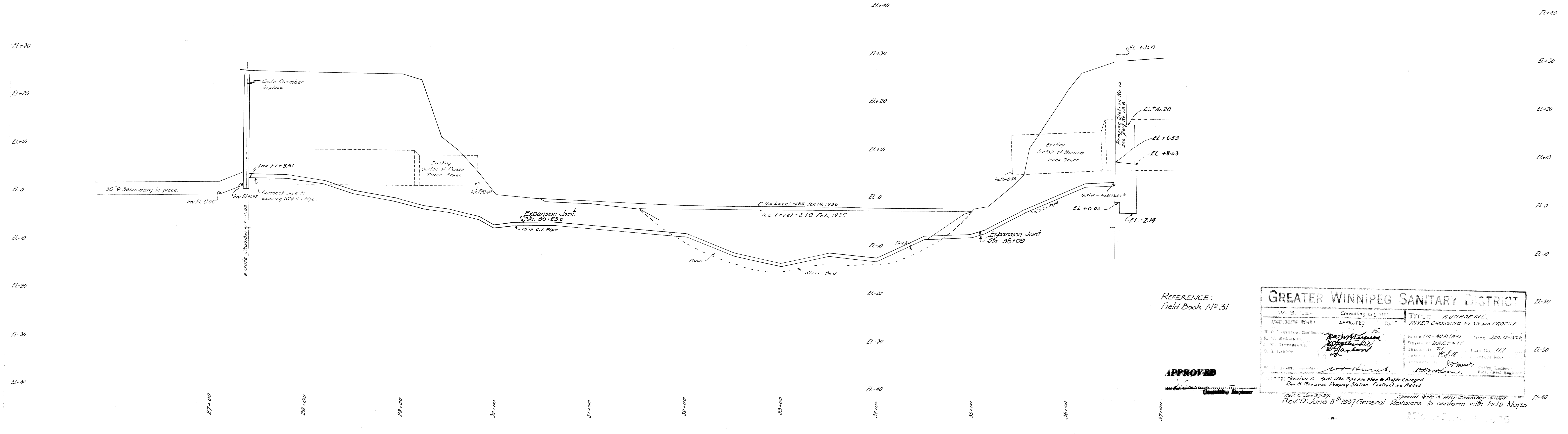
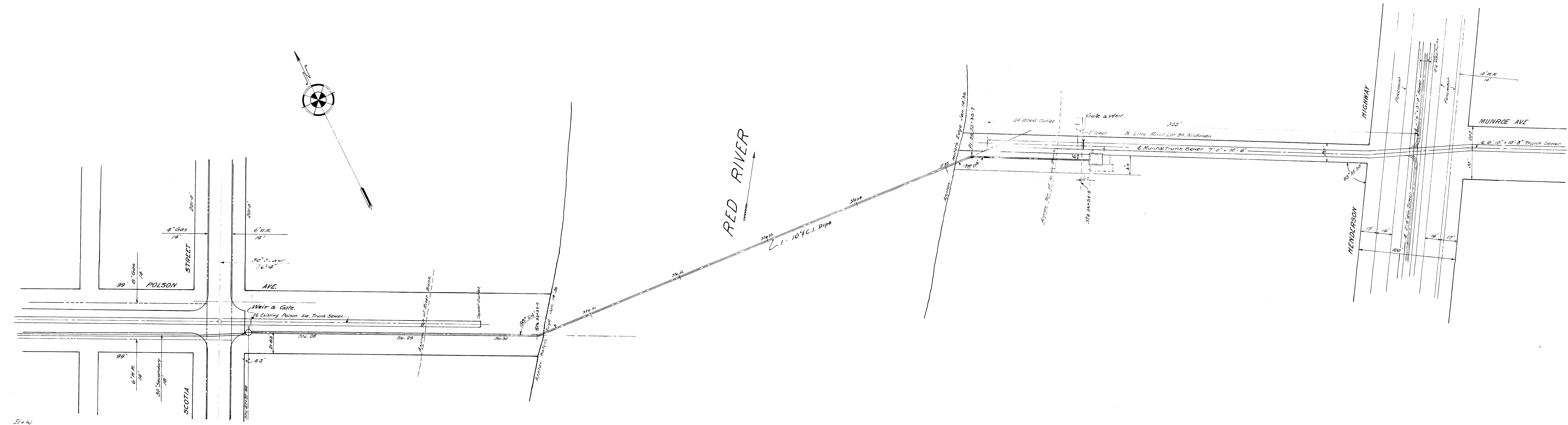
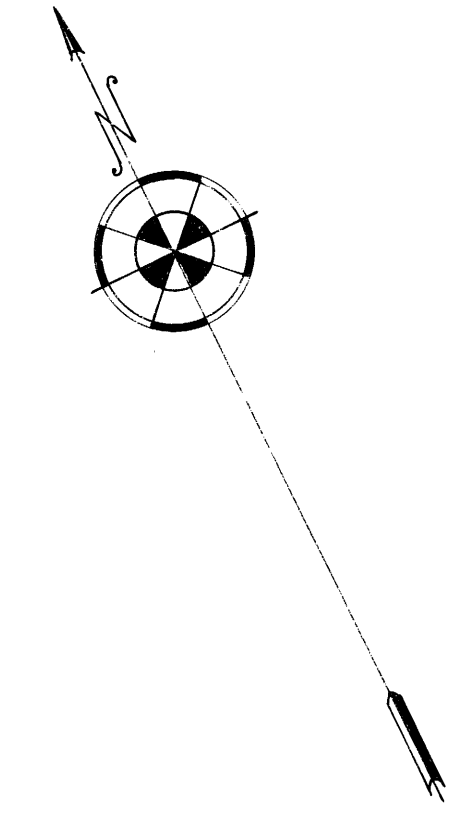
COWIN & CO. LTD.
REINFORCED CONCRETE ENGINEERS
WINNIPEG, MAN.

GREATER WINNIPEG DYKING BOARD
20 CUMBER ST. W. WINNIPEG, MANITOBA

POLSON AVE
PULPING STATION

SCALE: 1/4" = 1'-0"
SHEET No. 2 of 2
APPROVED: [Signature]
DRAWN BY: [Signature]
CHECKED BY: [Signature] DATE: []
DRG. No. 5-504

DETAILS



REFERENCE:
Field Book, No 31

GREATER WINNIPEG SANITARY DISTRICT W. S. TEELE Consulting Engineer CONSULTING ENGINEER APPROVED DATE		TITLE: MUNROE AVE. RIVER CROSSING PLAN AND PROFILE SCALE 1/4" = 40'-0" (80') DRAWN BY W.A.C. & T.F. CHECKED BY T.F. DATE NO. 117	
R. P. BURNETT, Chief Engineer R. W. BICKELSON, District Engineer J. W. BATHURST, District Engineer C. S. LARSON, District Engineer	<i>[Signature]</i> <i>[Signature]</i> <i>[Signature]</i>	Jan. 15, 1936 117	Office Engineer R. W. BICKELSON

APPROVED
Consulting Engineer

Revision A April 30/36 Pipe line Plan & Profile Changed
Rev B May 20/36 Pumping Station Contract so Added
Rev C Jan 27/37
Rev D June 8/1937 General Revisions to conform with FIELD NOTES
Special Gate & Weir Chamber added
MUNROE AVE. 1935

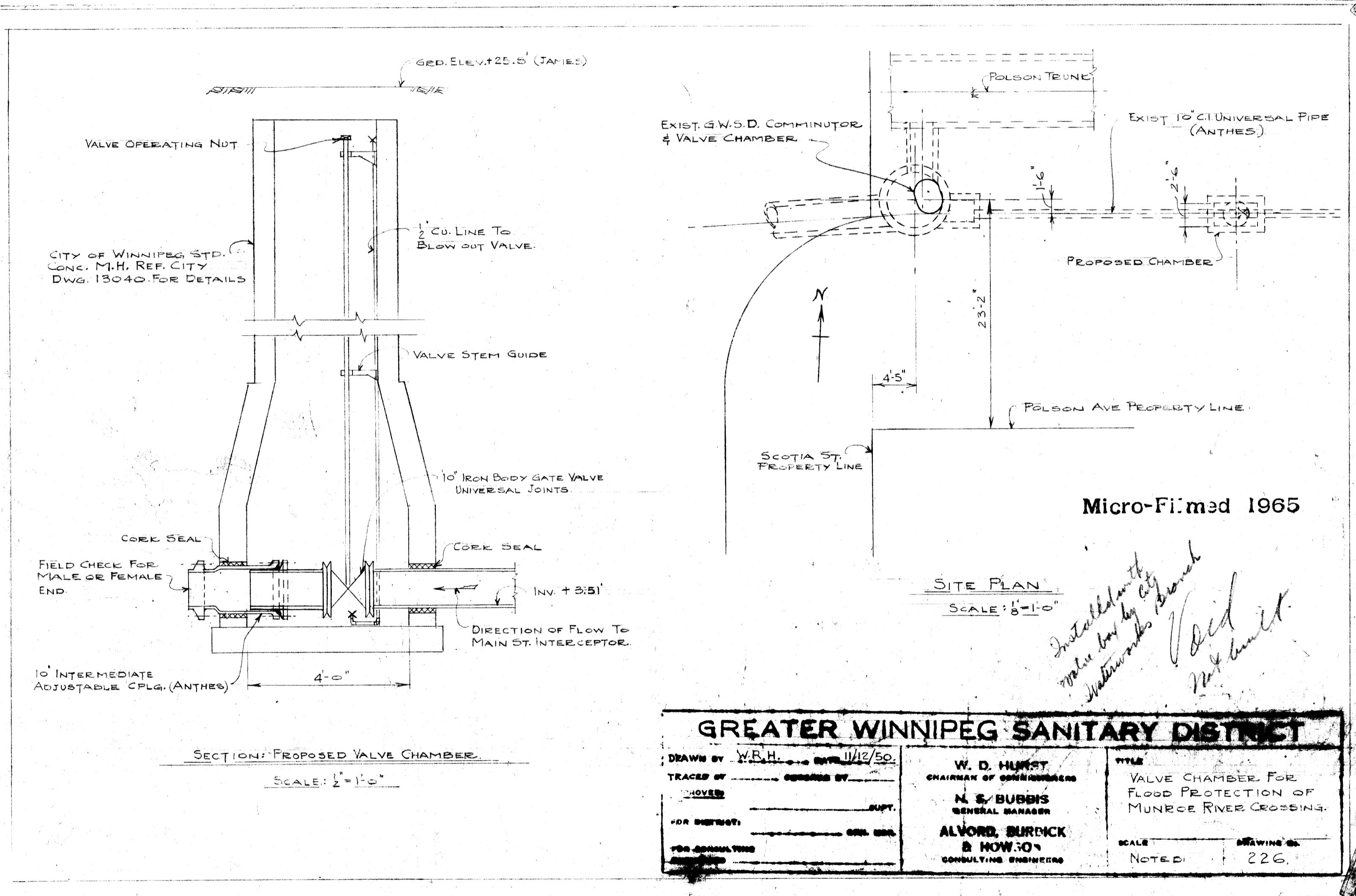
file #

FM10010

226

REF. or DRAWING NO.

DETAILS



GRD. ELEV. +25.5' (JAMES)

VALVE OPERATING NUT

CITY OF WINNIPEG STD. CONC. M.H. REF. CITY DWG. 13040 FOR DETAILS

1/2" CU. LINE TO BLOW OUT VALVE

VALVE STEM GUIDE

10" IRON BODY GATE VALVE UNIVERSAL JOINTS

CORK SEAL

FIELD CHECK FOR MALE OR FEMALE END.

10" INTERMEDIATE ADJUSTABLE CPLG. (ANTHES)

4'-0"

DIRECTION OF FLOW TO MAIN ST. INTERCEPTOR.

INV. +3.51'

EXIST. G.W.S.D. COMMINUTOR & VALVE CHAMBER

POLSON TRUNK

EXIST. 10" CI UNIVERSAL PIPE (ANTHES)

PROPOSED CHAMBER

1'-6"

23'-2"

4'-5"

POLSON AVE PROPERTY LINE

SCOTIA ST. PROPERTY LINE

N

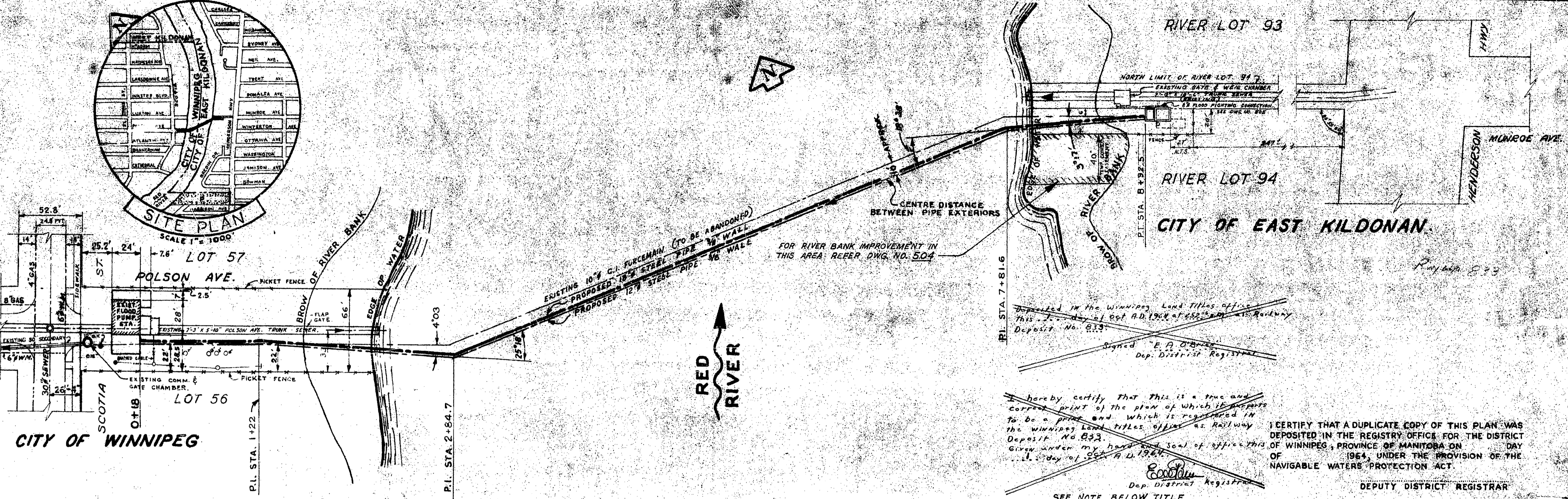
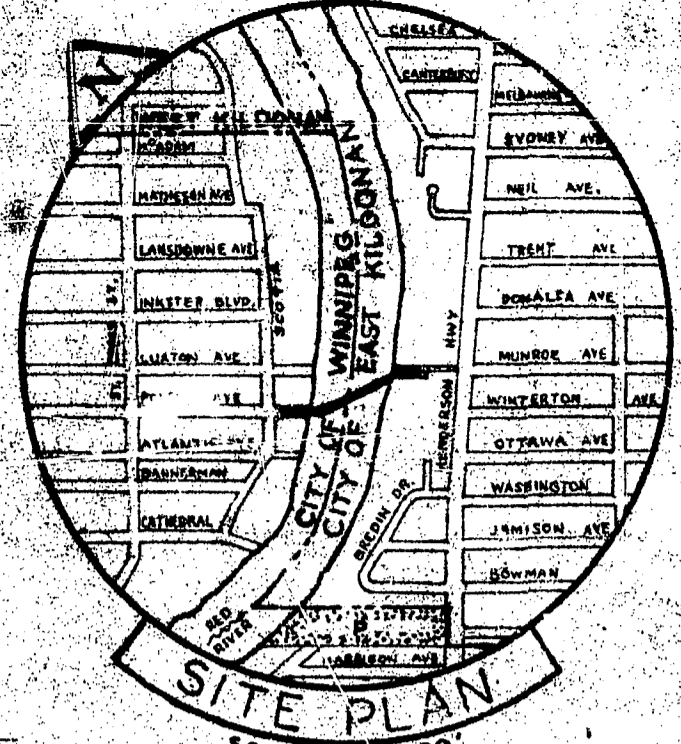
Micro-Filmed 1965

Installed with valve box by City Waterworks Branch

Old not built.

GREATER WINNIPEG SANITARY DISTRICT		
DRAWN BY W.B.H.	DATE 11/12/50	TITLE VALVE CHAMBER FOR FLOOD PROTECTION OF MUNROE RIVER CROSSING.
TRACES BY	DESIGNED BY	SCALE
APPROVED	SUPT.	NOTED
FOR DISTRICT	CON. ENG.	DRAWING NO. 226
FOR CONSULTING		
W. D. HURST CHAIRMAN OF COMMISSIONERS N. S. BUBBIS GENERAL MANAGER ALVORD, BURDICK & HOWSON CONSULTING ENGINEERS		

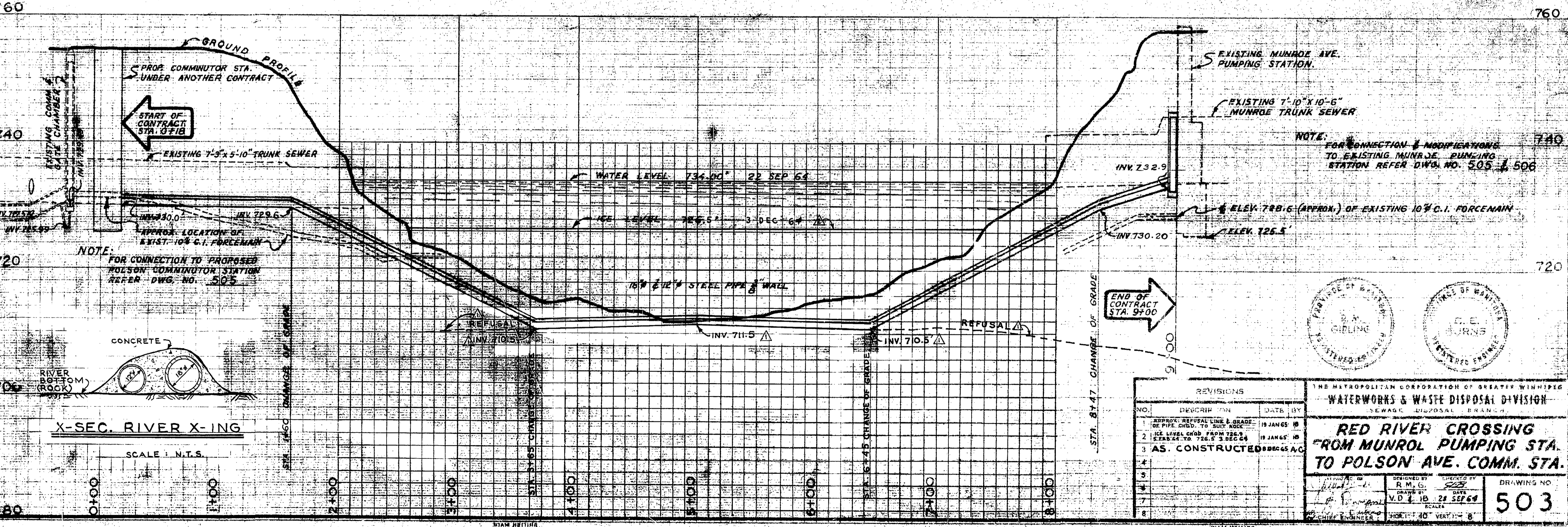
Doc. 665



Deposited in the Winnipeg Land Titles office
 this 1st day of Oct. A.D. 1964 at 4:50 o'clock p.m.
 Deposit No. 833
 Signed: E. A. O'Brien
 Dep. District Registrar

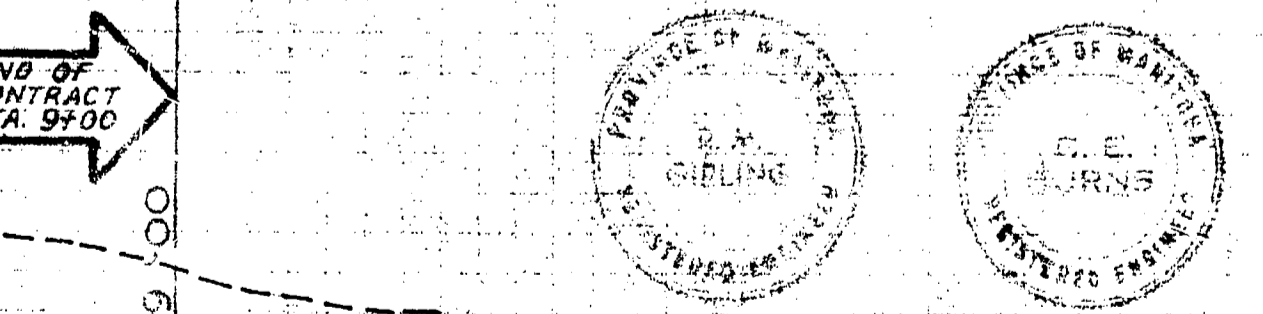
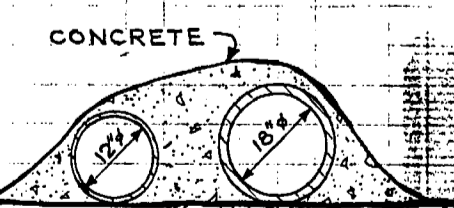
I hereby certify that this is a true and correct print of the plan of which it purports to be a print and which is registered in the Winnipeg Land Titles office as Railway Deposit No. 833.
 Given under my hand and seal of office this 1st day of Oct. A.D. 1964.
 E. A. O'Brien
 Dep. District Registrar

I CERTIFY THAT A DUPLICATE COPY OF THIS PLAN WAS DEPOSITED IN THE REGISTRY OFFICE FOR THE DISTRICT OF WINNIPEG, PROVINCE OF MANITOBA ON DAY OF 1964, UNDER THE PROVISION OF THE NAVIGABLE WATERS' PROTECTION ACT.
 DEPUTY DISTRICT REGISTRAR



NOTE:
 FOR CONNECTION & MODIFICATIONS TO EXISTING MUNROE PUMPING STATION REFER DWG. NO. 505 & 506

NOTE:
 FOR CONNECTION TO PROPOSED POLSON COMMUNICATOR STATION REFER DWG. NO. 505



REVISIONS		
NO.	DESCRIPTION	DATE BY
1	APPROX. REFUSAL LINE & GRADE OF PIPE CHGD. TO SUIT REQ.	19 JAN 65 JB
2	ICE LEVEL CHGD FROM 726.9 TO 726.5 3 DEC 64	19 JAN 65 JB
3	AS. CONSTRUCTED	08 DEC 65 A.C.
4		
5		
6		
7		
8		

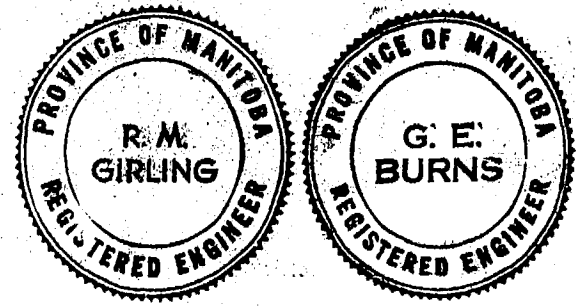
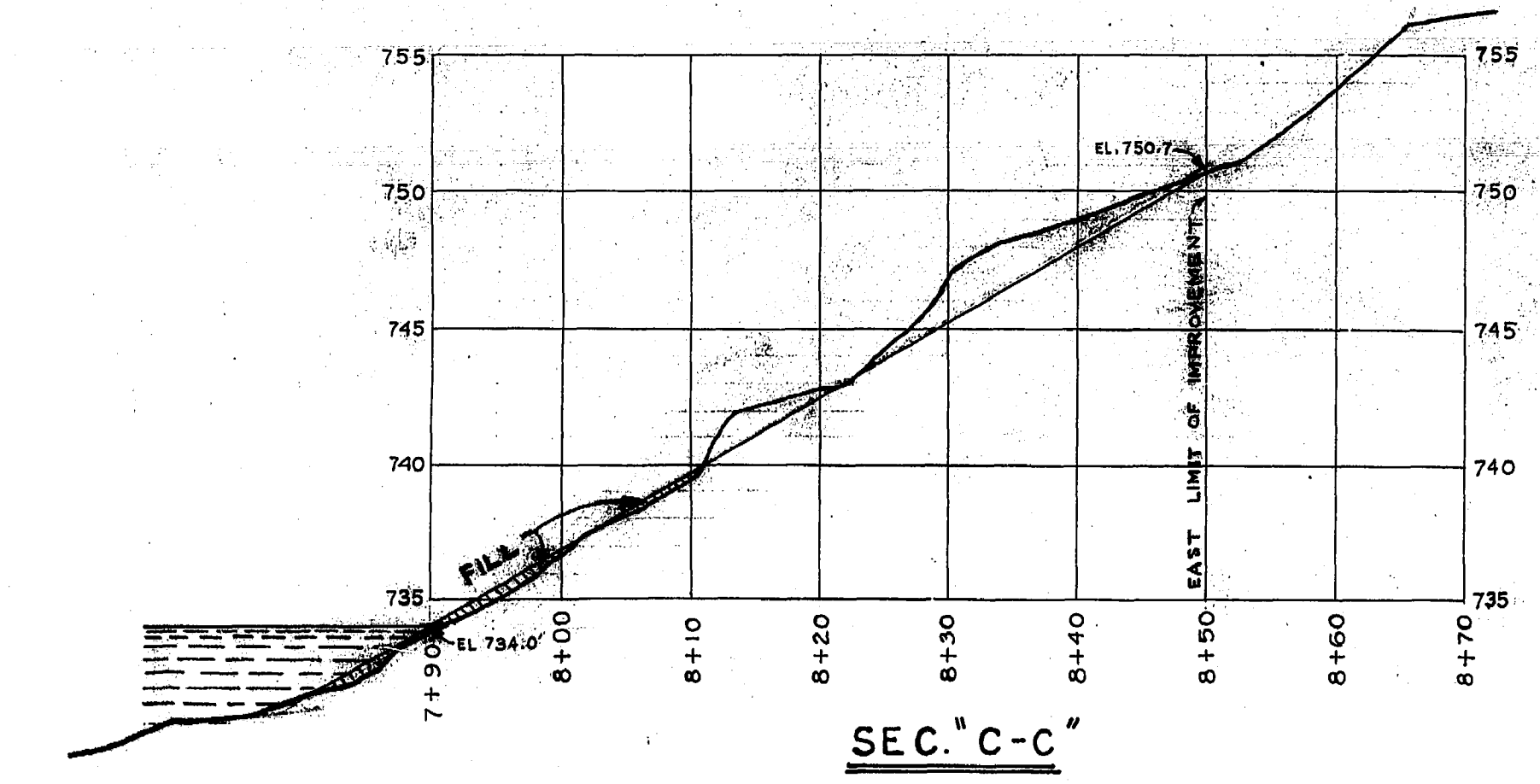
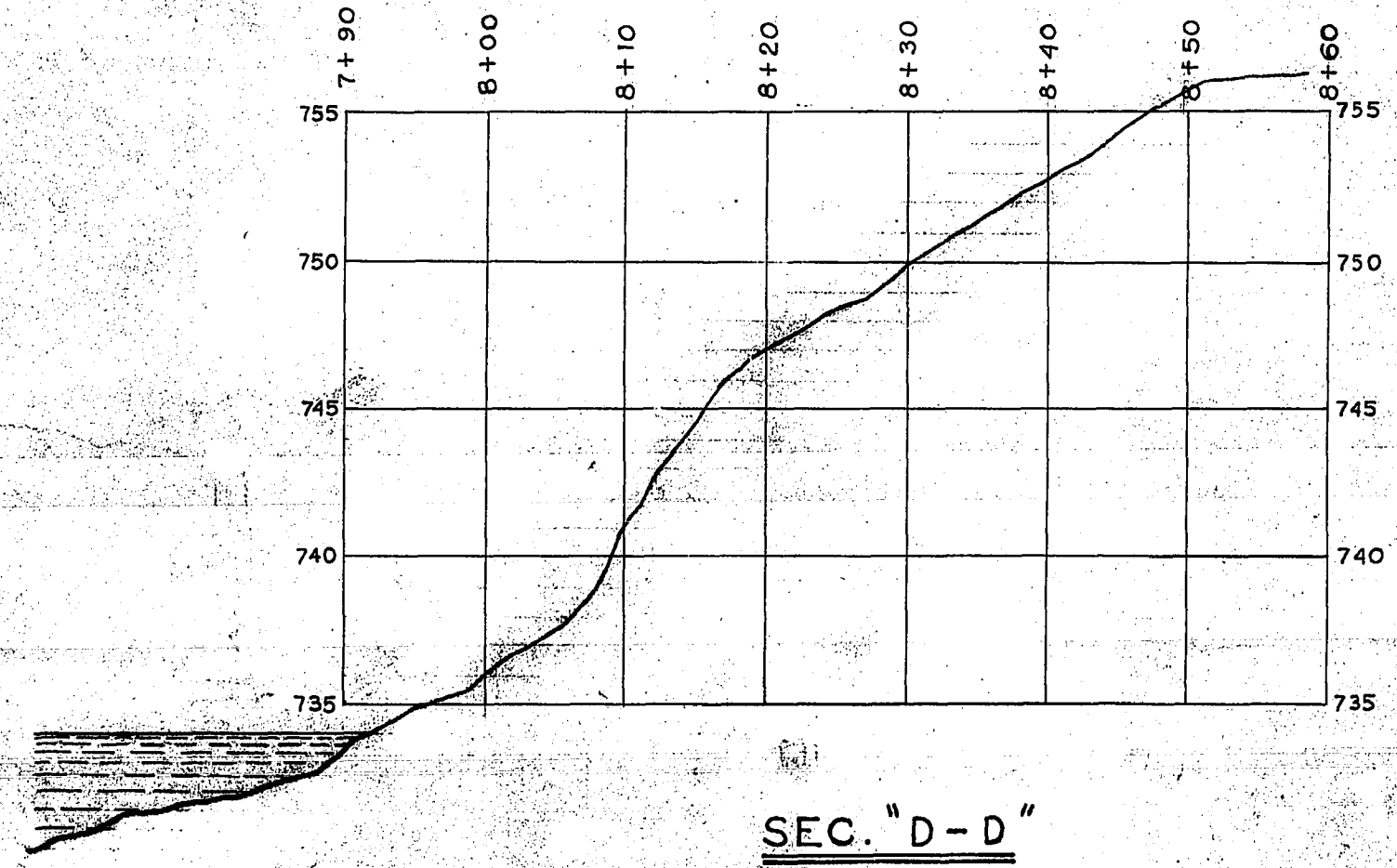
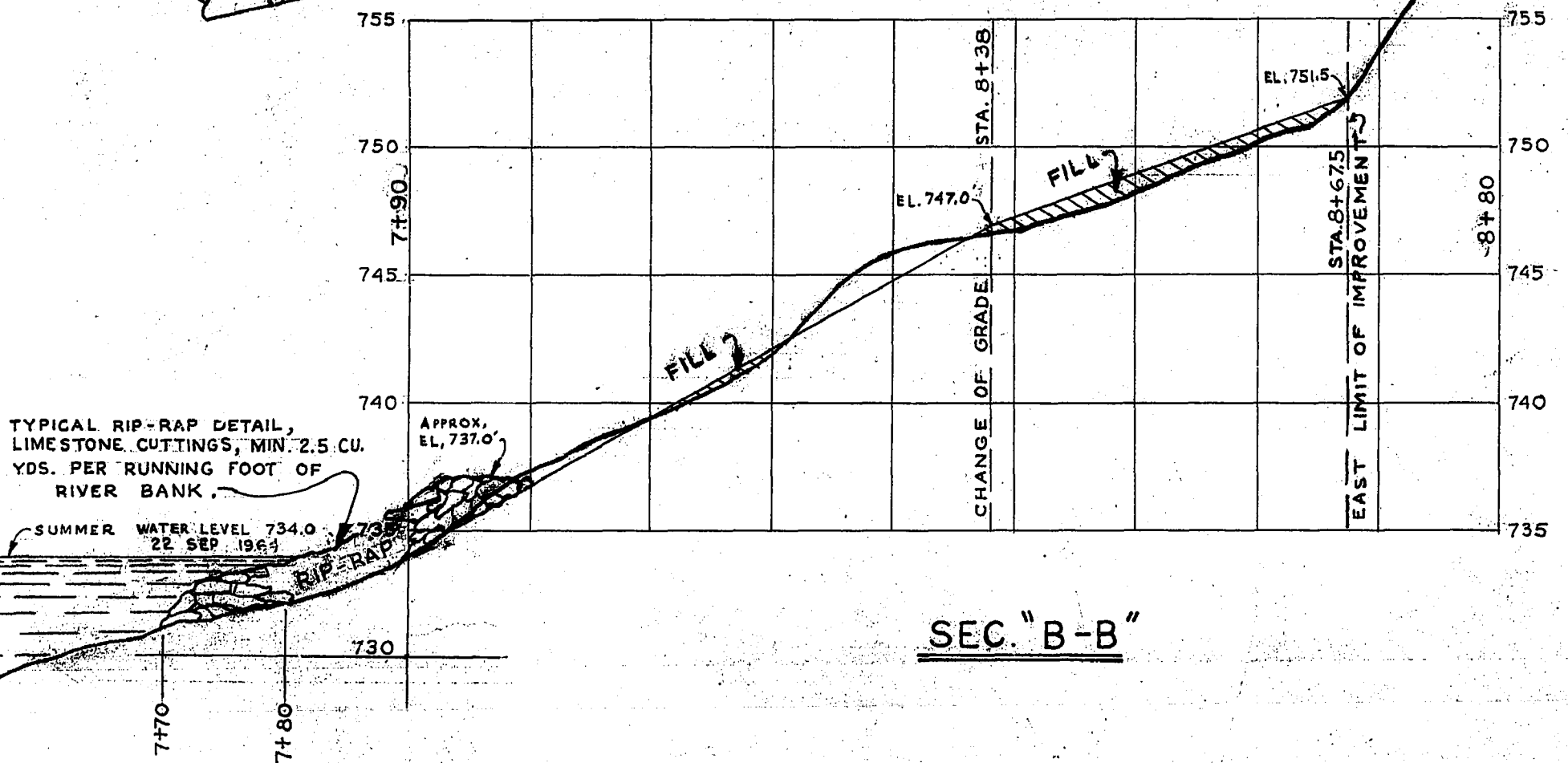
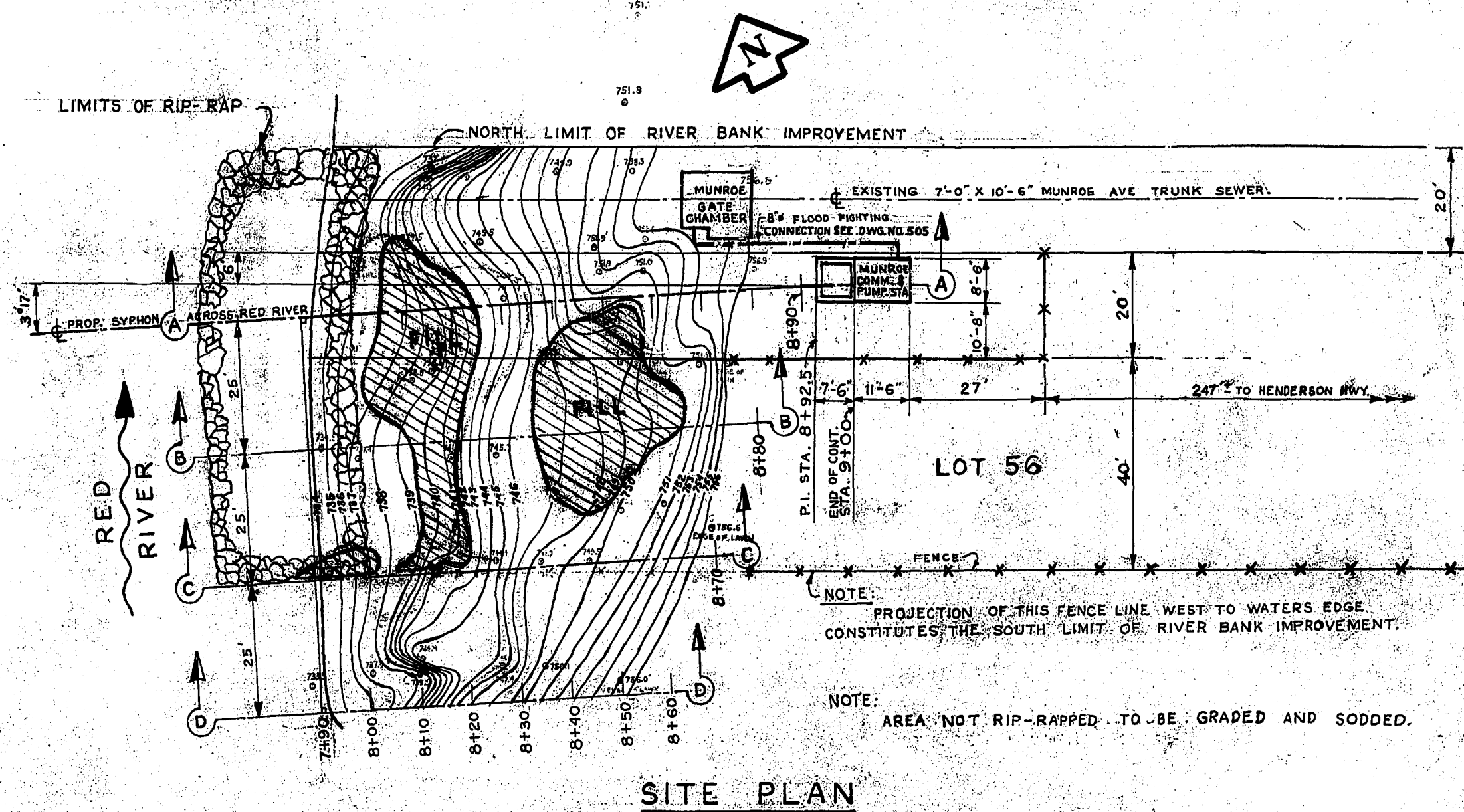
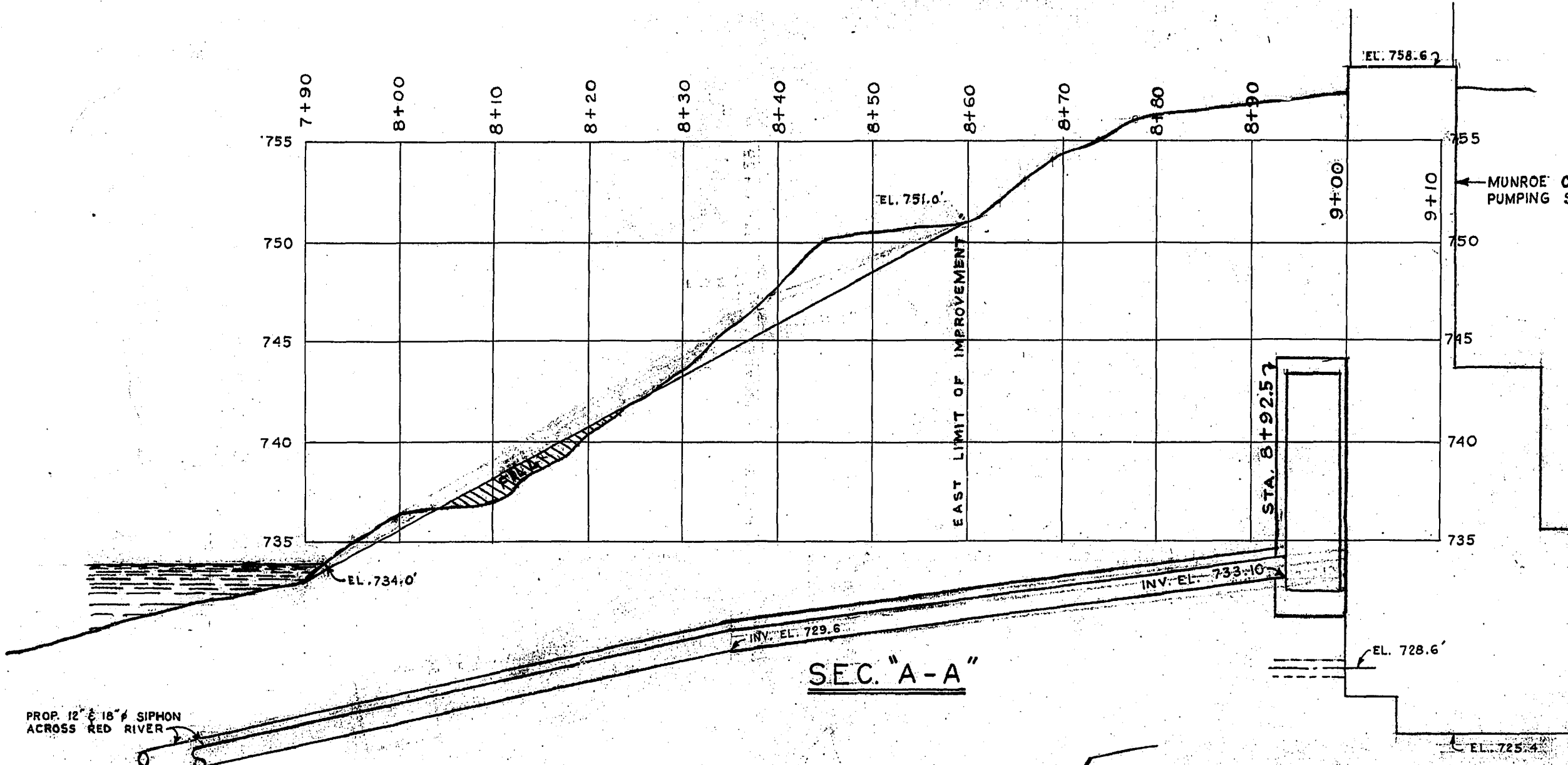
THE METROPOLITAN CORPORATION OF GREATER WINNIPEG
 WATERWORKS & WASTE DISPOSAL DIVISION
 SEWAGE DISPOSAL BRANCH

RED RIVER CROSSING FROM MUNROE PUMPING STA. TO POLSON AVE. COMM. STA.

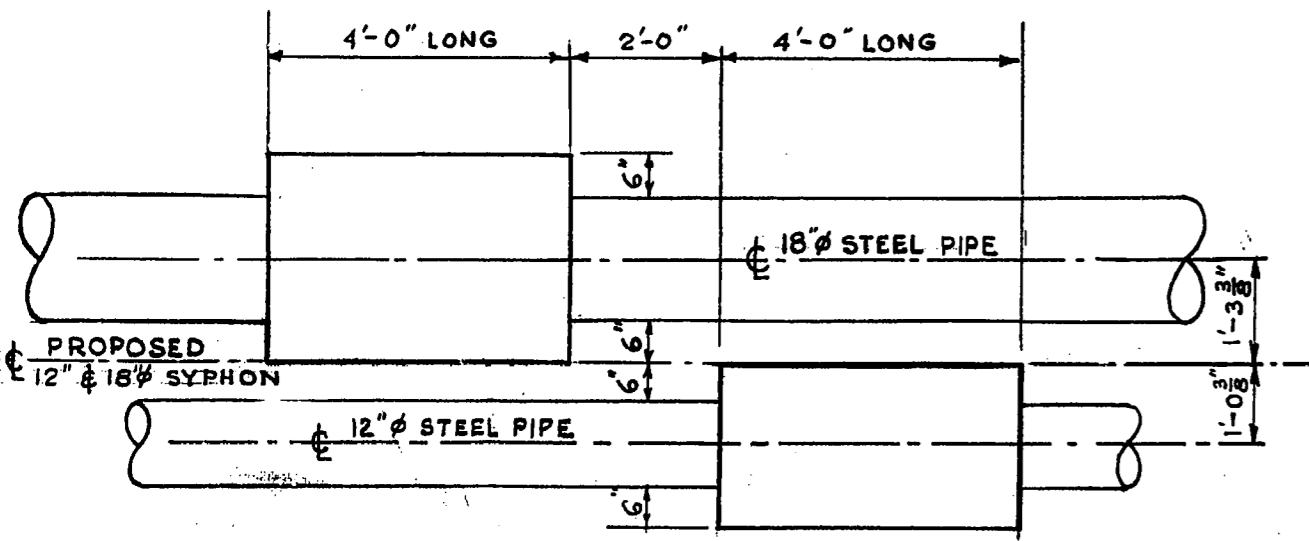
DESIGNED BY: R.M.G. DATE: 28 SEP 64
 DRAWN BY: V.D.L. DATE: 28 SEP 64
 CHECKED BY: [Signature] DATE: [Blank]
 SCALE: HORIZ. 1" = 40' VERT. 1" = 8'

DRAWING NO. **503**

NOTE: FOR REGD. PLAN ORIGINAL, NEED WITH WINNIPEG LAND TITLES OF DEPT. OF PUBLIC WORKS OF W.A. SEE SERIAL OF DWG. NO. 503

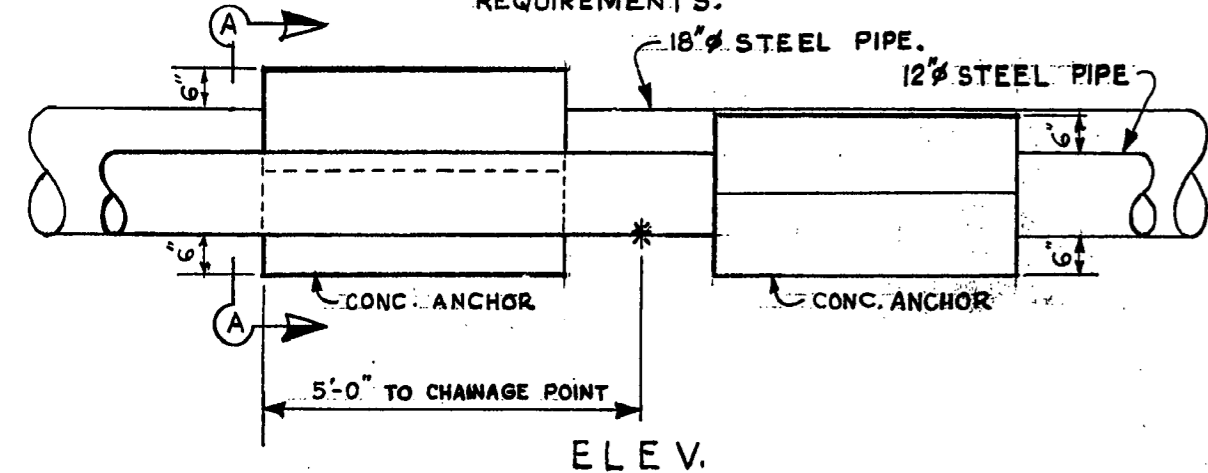


THE METROPOLITAN CORPORATION OF GREATER WINNIPEG WATERWORKS & WASTE DISPOSAL DIVISION N. S. BUBBIS - DIRECTOR	SEWAGE DISPOSAL DEPT. MUNROE - POLSON RIVER X-ING	DES. R. GIRLING CHK'D. [Signature] DRN. H. BUXMAN DATE 5 NOV 1964 ENG. DES. [Signature] ENG. WASTE DEP. A. Roman APPROVED [Signature]	SCALE AS NOTED HORIZ. 1" = 10' VERT. 1" = 5' DRAWING NO. 504
	RIVER BANK IMPROVEMENT EAST BANK.		

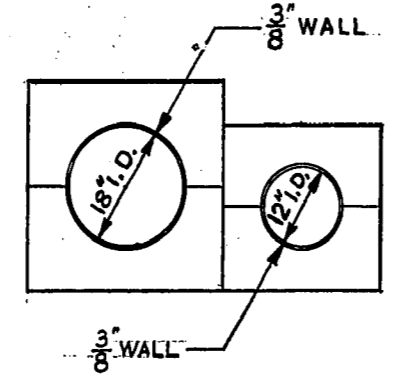


PLAN

NOTE:
LIFTING LUGS TO BE SUPPLIED BY
CONTRACTOR, AS PER CONTRACTOR'S
REQUIREMENTS.



ELEV.

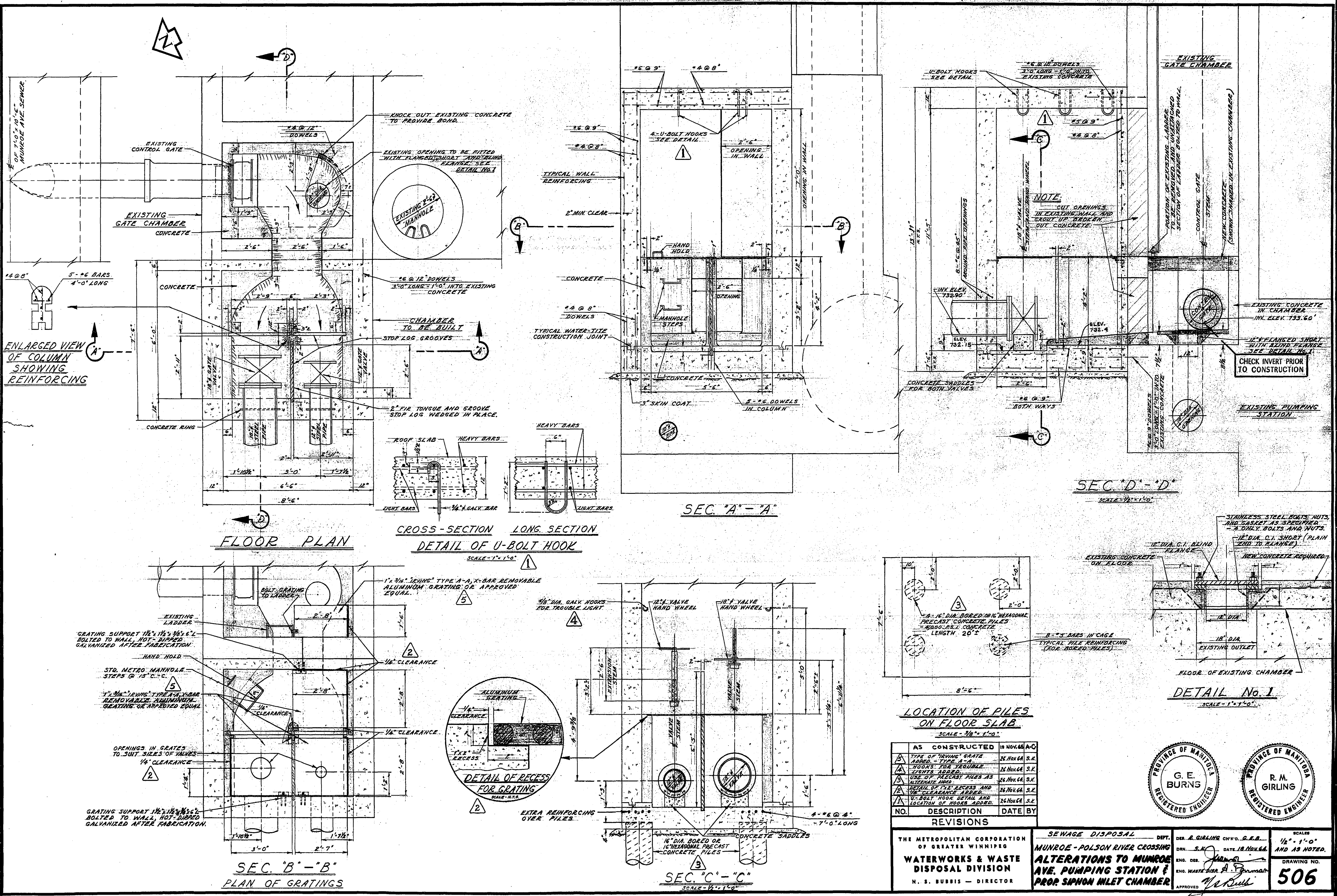


SEC. "A-A"

TYP. CONC. ANCHOR BLOCKS

SCALE 1/2" = 1'-0"

THE METROPOLITAN CORPORATION OF GREATER WINNIPEG WATERWORKS & WASTE DISPOSAL DIVISION N. S. BUBBIS - DIRECTOR	SEWAGE DISPOSAL DEPT.	DES. R. GIRLING CH'K'D. _____ DRN. HB DATE 10 NOV 64	SCALE AS NOTED
	MUNROE - POLSON	ENG. DES. _____	DRAWING NO.
	RIVER X-ING	ENG. _____	505-A
	MISC. DETAILS	APPROVED _____	



NO.	DESCRIPTION	DATE	BY
AS CONSTRUCTED		18 NOV. 66	A.C.
1	TYPE OF 'MOVING' GRATE ADDED - TYPE A-A	26 NOV. 64	S.K.
2	HOOKS FOR TROUBLE LIGHTS ADDED	26 NOV. 64	S.K.
3	USE OF PRECAST PILES AS ALTERNATE INVERT	26 NOV. 64	S.K.
4	DETAIL OF 1/4" RECESS AND 1/4" CLEARANCE ADDED	26 NOV. 64	S.K.
5	U-BOLT HOOK DETAIL AND LOCATION OF HOOKS ADDED	26 NOV. 64	S.K.

THE METROPOLITAN CORPORATION OF GREATER WINNIPEG
WATERWORKS & WASTE DISPOSAL DIVISION
 N. S. BUBBIS - DIRECTOR

SEWAGE DISPOSAL

MUNROE - POLSON RIVER CROSSING
ALTERATIONS TO MUNROE AVE. PUMPING STATION & PROP. SIPHON INLET CHAMBER

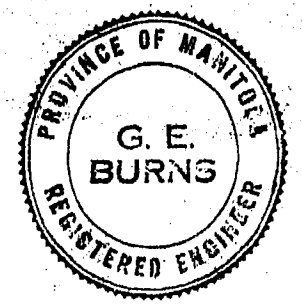
DEPT. **S.K.** CH'VD. **G.E.B.**
 DATE **18 NOV. 66**

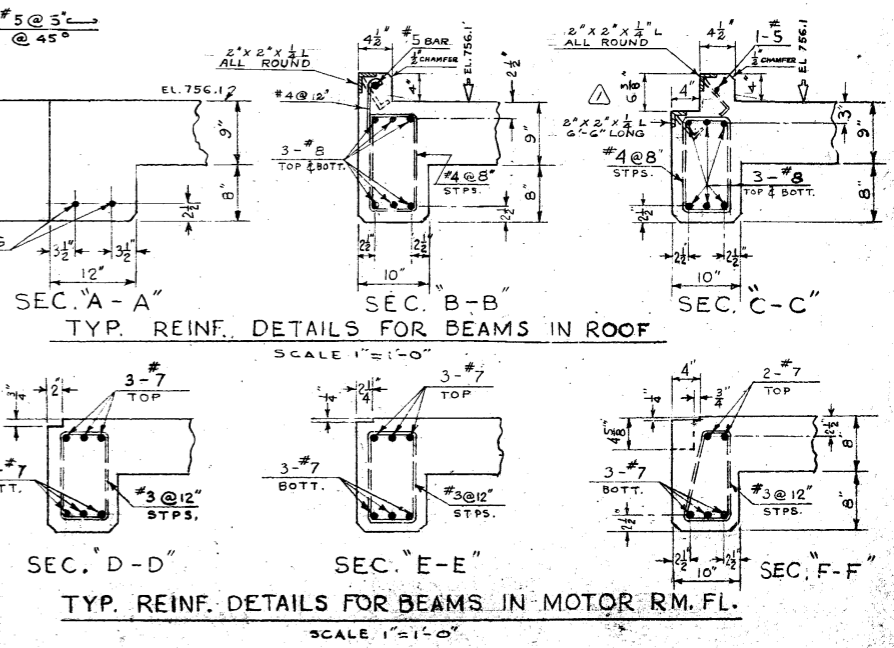
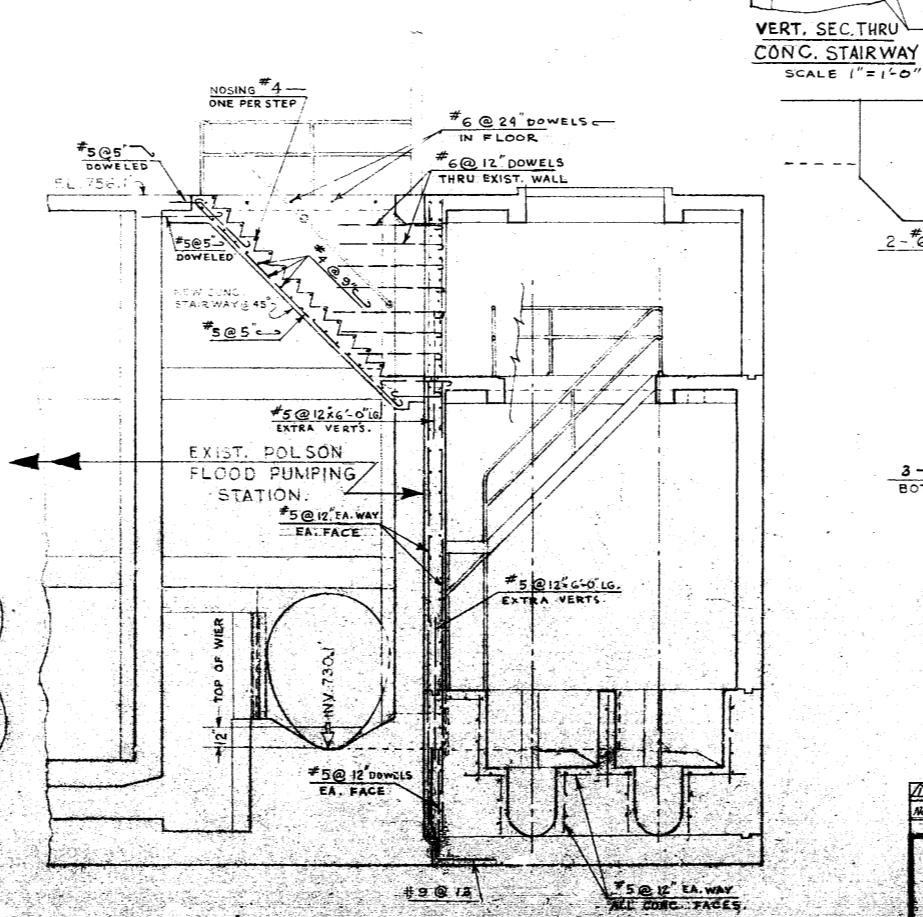
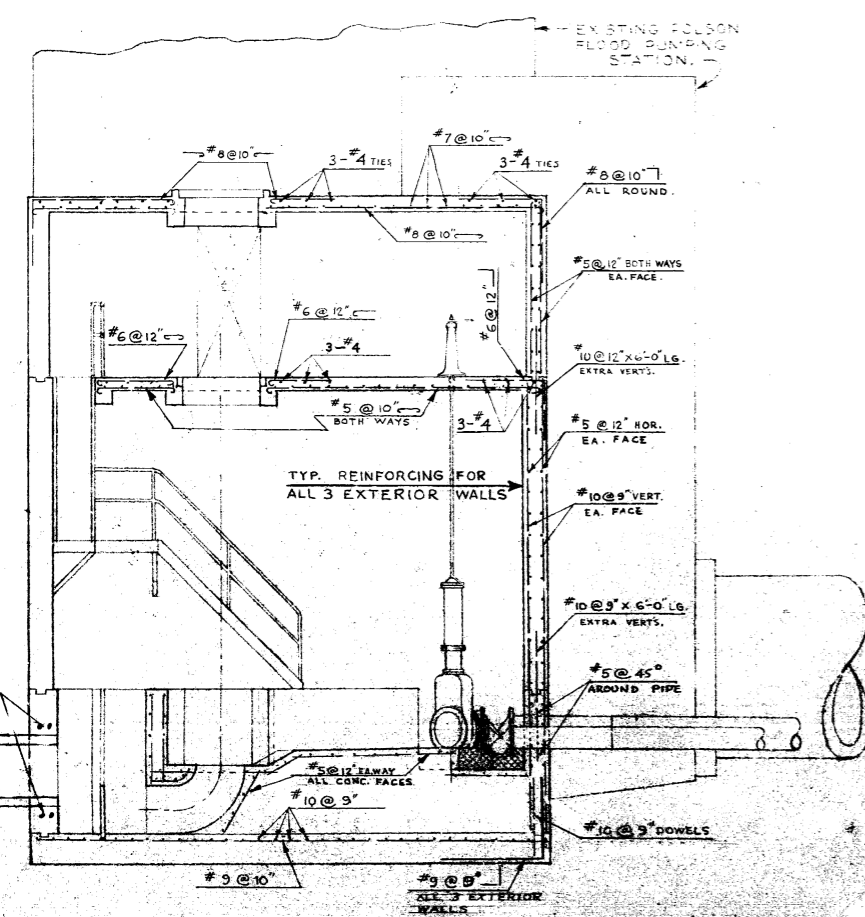
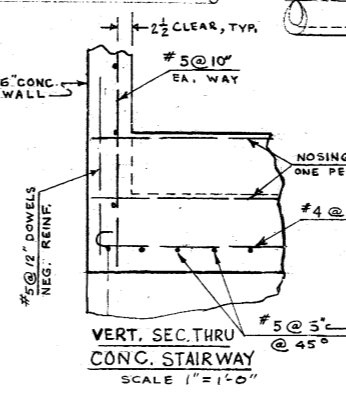
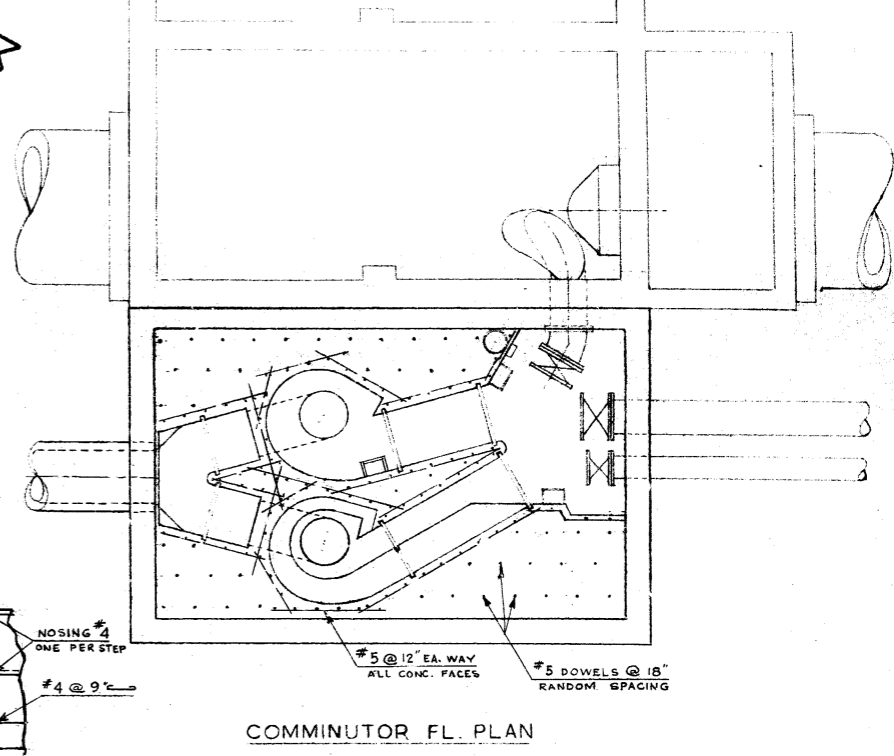
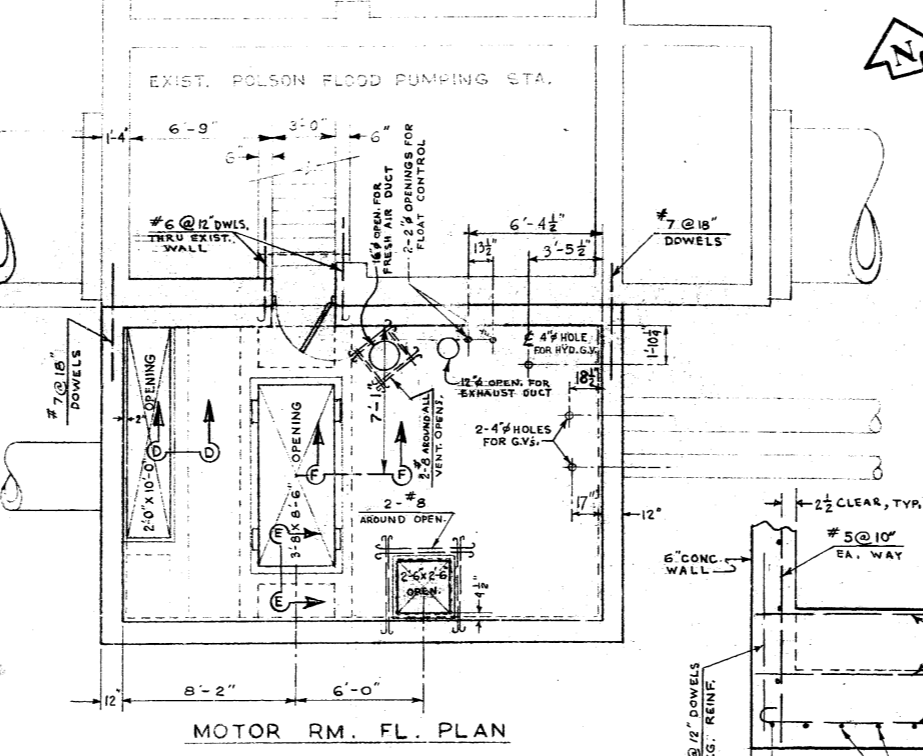
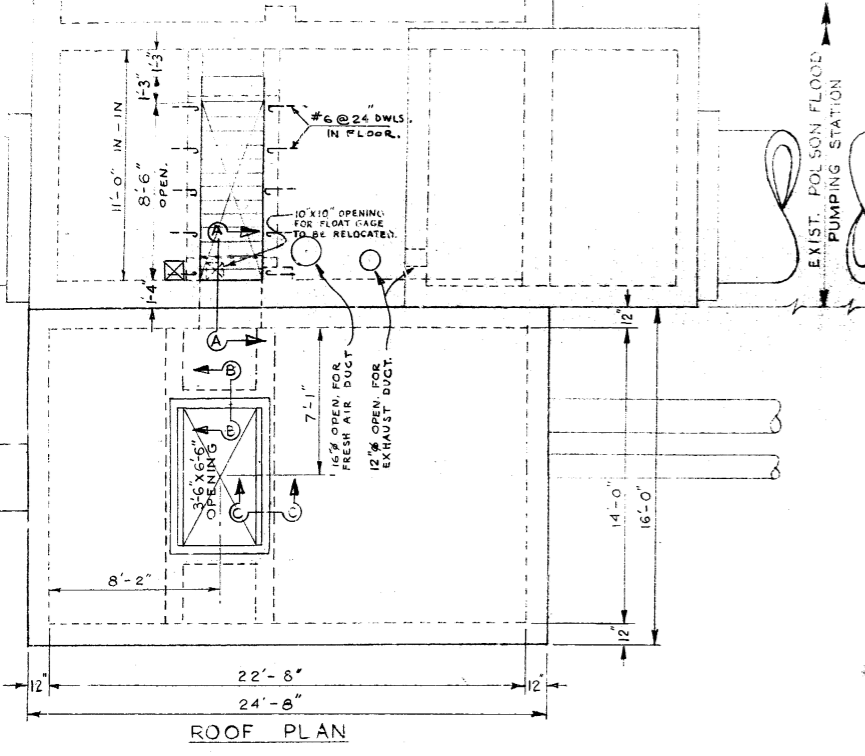
ENGR. DES. **J. Burns**
 ENGR. WASTE DIS. **A. Burns**

APPROVED **G.E. Burns**

SCALE: **1/2" = 1'-0"**
 AND AS NOTED.

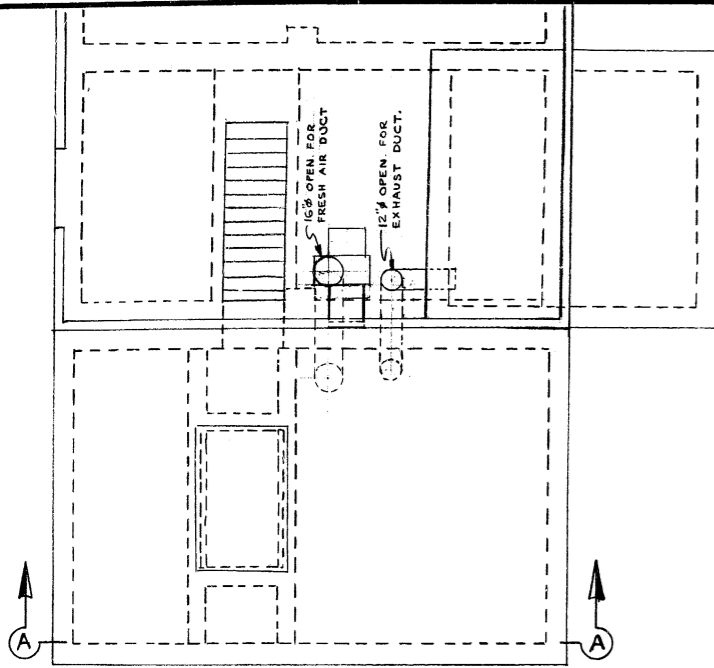
DRAWING NO. **506**



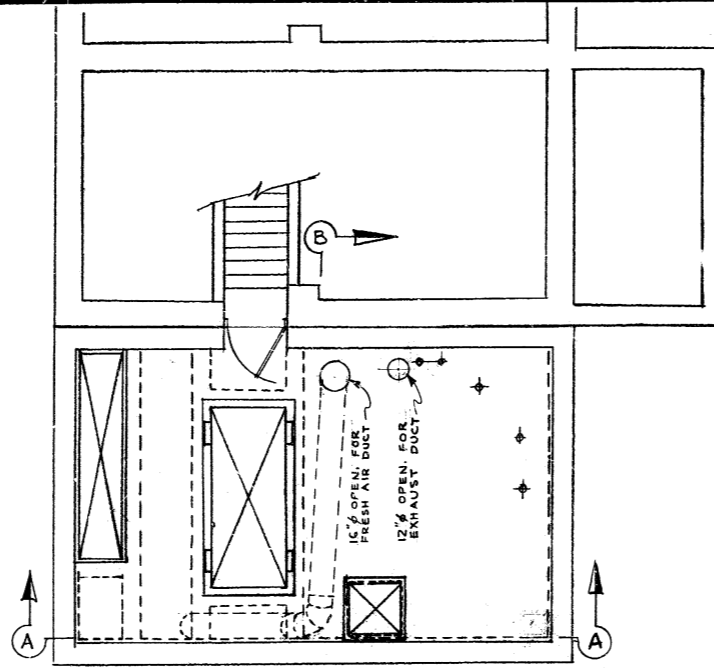


THE METROPOLITAN CORPORATION OF GREATER WINNIPEG WATERWORKS & WASTE DISPOSAL DIVISION		SEWAGE DISPOSAL DEPT. POLSON COMMUNUTOR STA REINFORCING STEEL DETAILS		DESIGNED BY M. GLEZAK DATE DEC. 22, 1964	DRAWN BY H. BUSMAN DATE DEC. 22, 1964	CHECKED BY J. P. GIBSON DATE DEC. 22, 1964	APPROVED BY J. P. GIBSON DATE DEC. 22, 1964
REVISIONS				NO. 1		SCALE 1" = 1'-0"	
512				512		512	

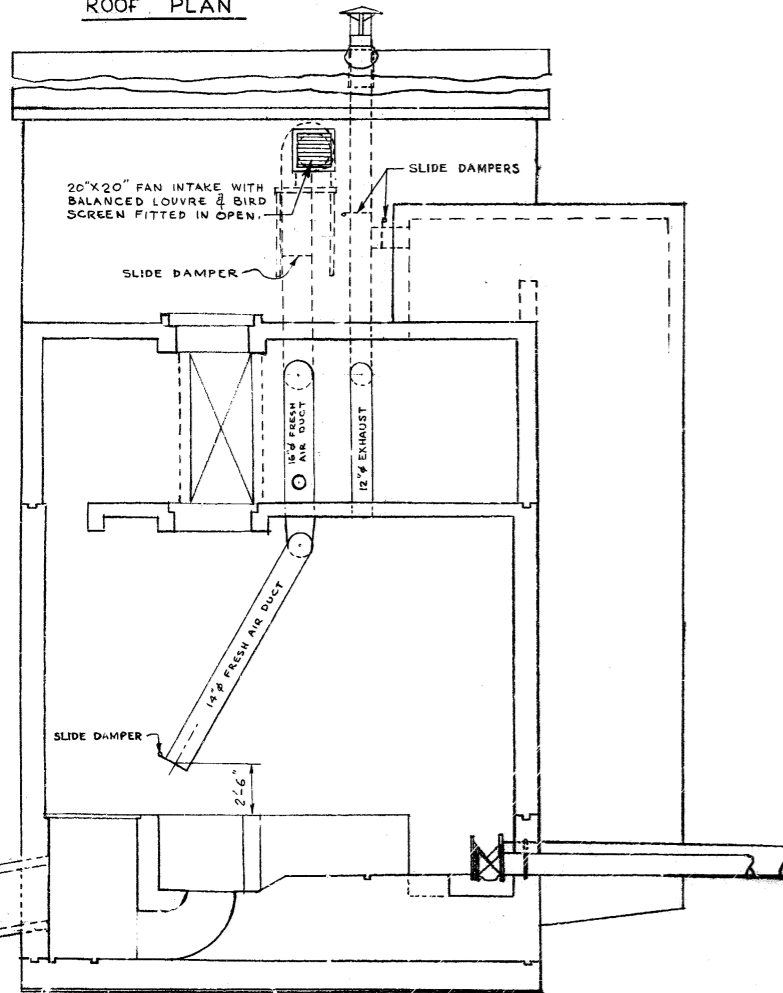
1 DEAN 2 3 4 5 6 7 8 9 10 11 12 13 14 15 16 17 18 19 20



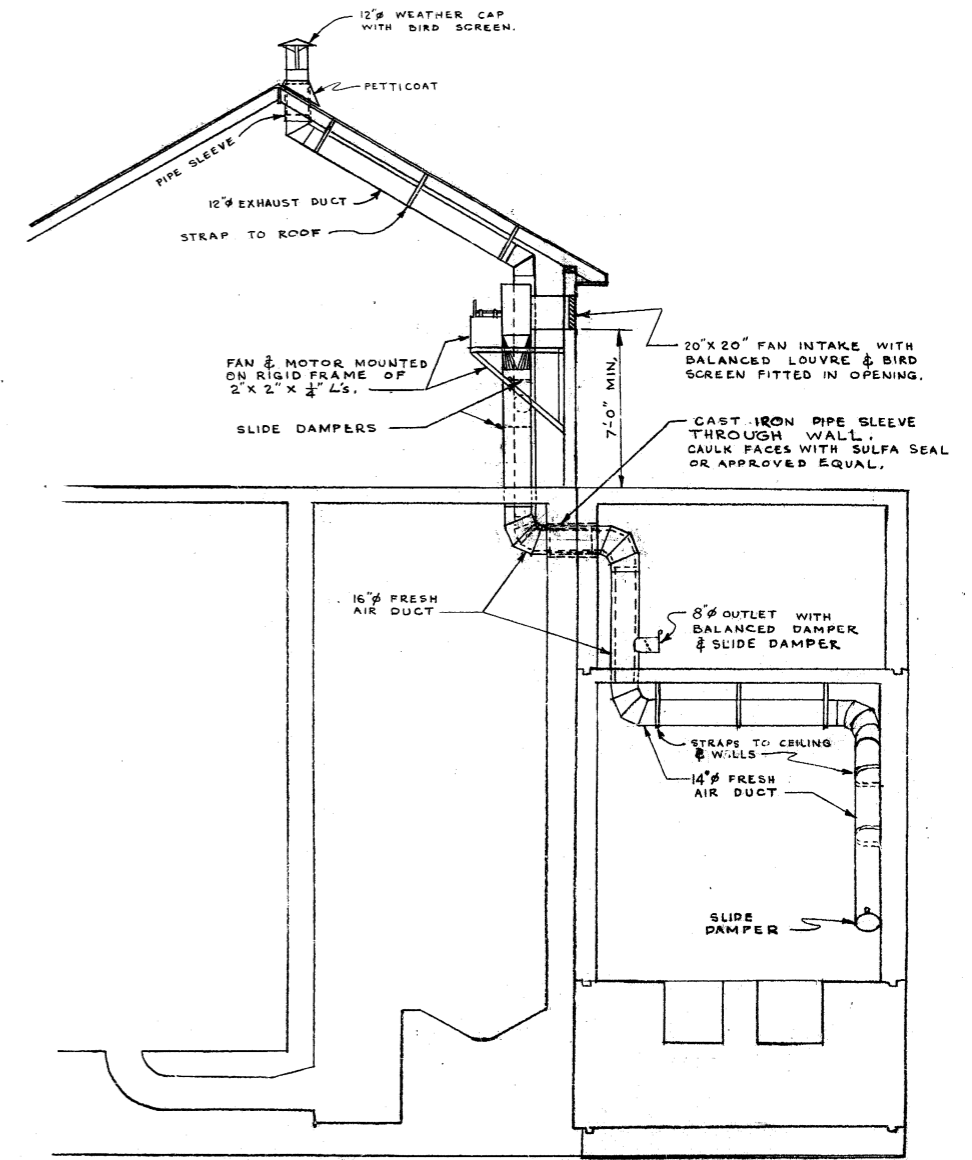
ROOF PLAN



MOTOR RM. FL. PLAN



SEC. A-A.

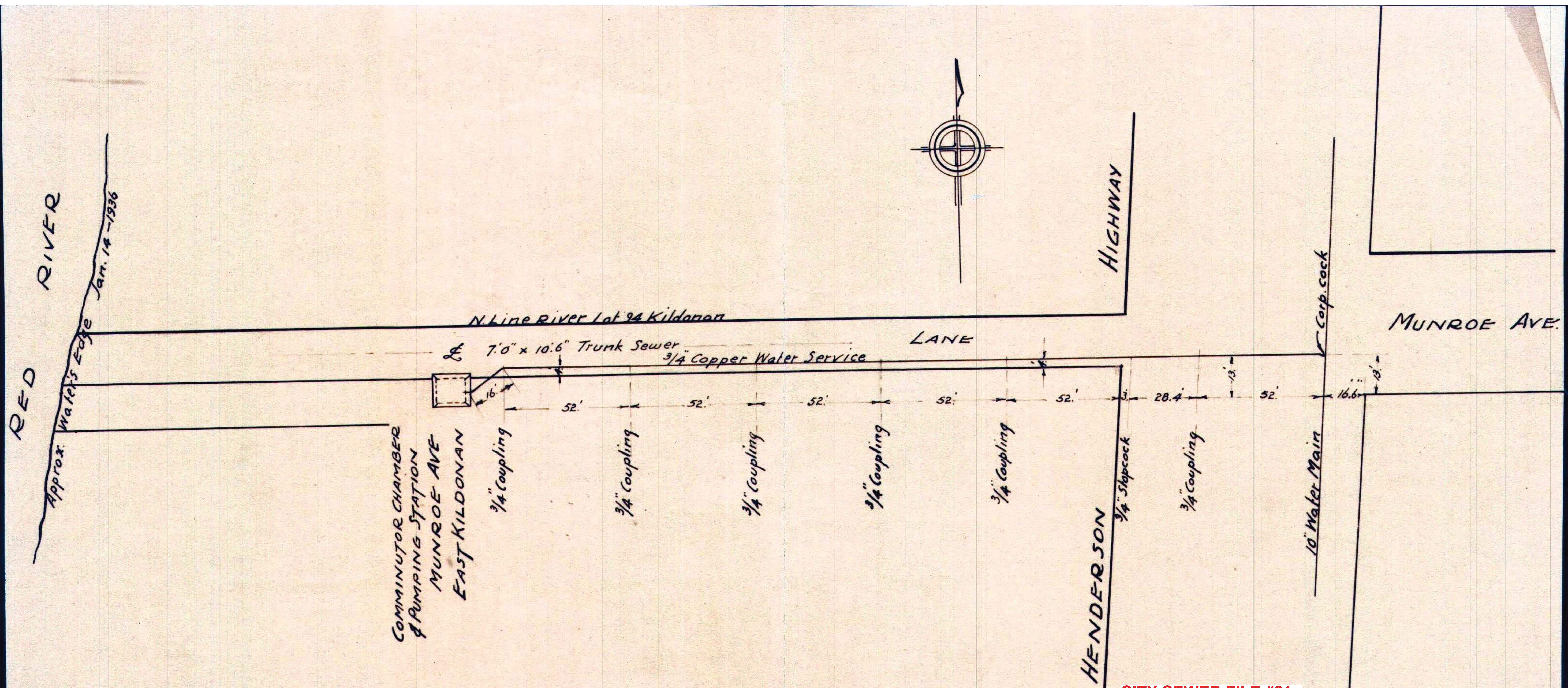


SEC. "B-B"



THE METROPOLITAN CORPORATION OF GREATER WINNIPEG WATERWORKS & WASTE DISPOSAL DIVISION N. S. BUSBIS - DIRECTOR	SEWAGE DISPOSAL DEPT. POLSON COMMINUTOR STA.	DES. R. GIRLING CHK'D. <i>[Signature]</i> ENR. H. BUXTON DATE 28 DEC 64 ENG. DES. <i>[Signature]</i> ENR. WASTE <i>[Signature]</i>	SCALE 1" = 1'-0" DRAWING NO. 514
	VENTILATION DETAILS	APPROVED <i>[Signature]</i>	



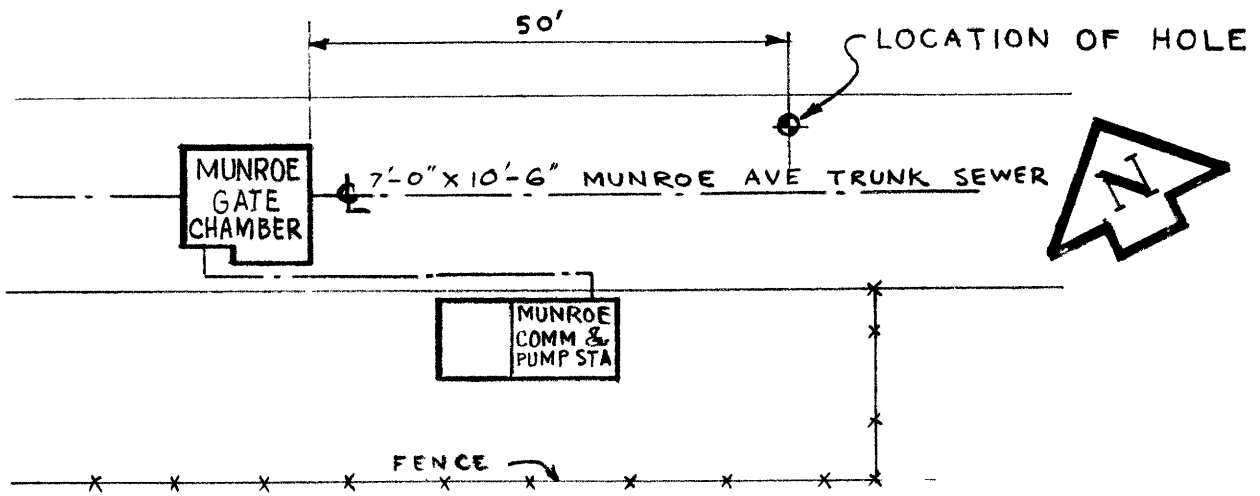


CITY SEWER FILE #81

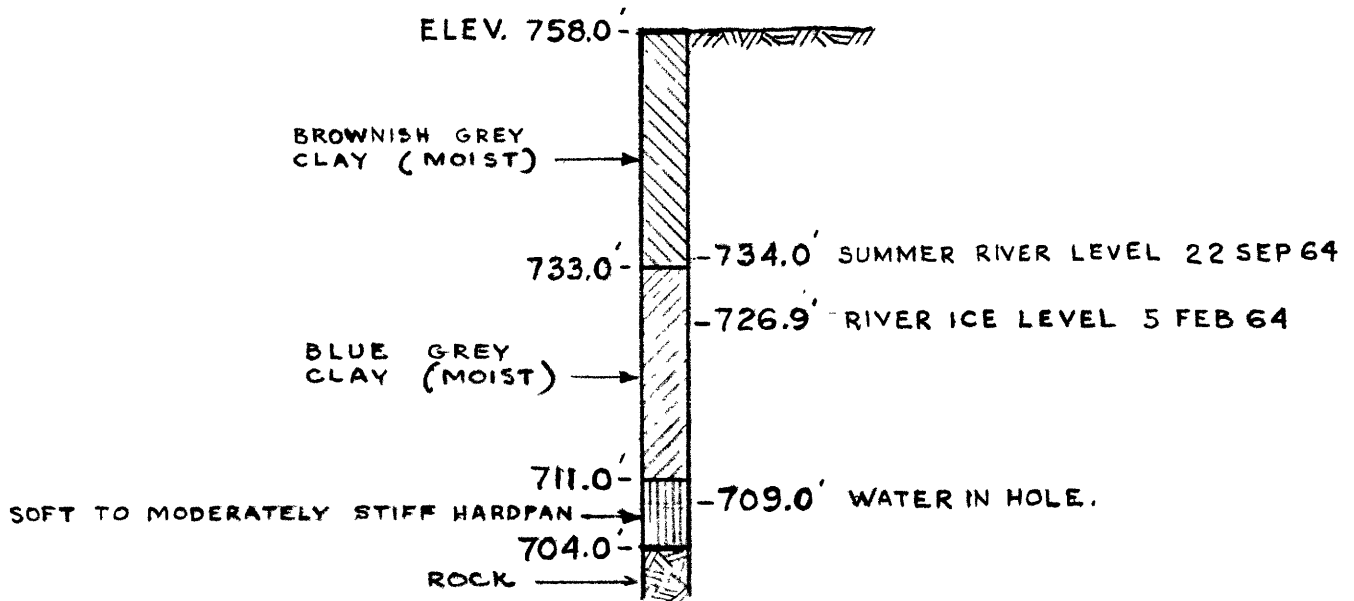
D-15341

CITY OF WINNIPEG
 TITLE MUNROE AVE. - 3/4" COPPER
 WATER SERVICE TO PUMPING
 STATION "EAST KILDONAN"
 SCALE 40. = 1" DATE July 29th 1937

A. ALDRIDGE, DESIGNING ENGINEER
 W. P. BRERETON, CITY ENGINEER
 DRAWN BY J.A.M.
 TRACED BY:
 CHECKED BY:
 APPROVED BY:
 NOTES: PLANNING
 TUBE NO



SITE PLAN
SCALE 1" = 20'



VERT. SCALE 1" = 20'

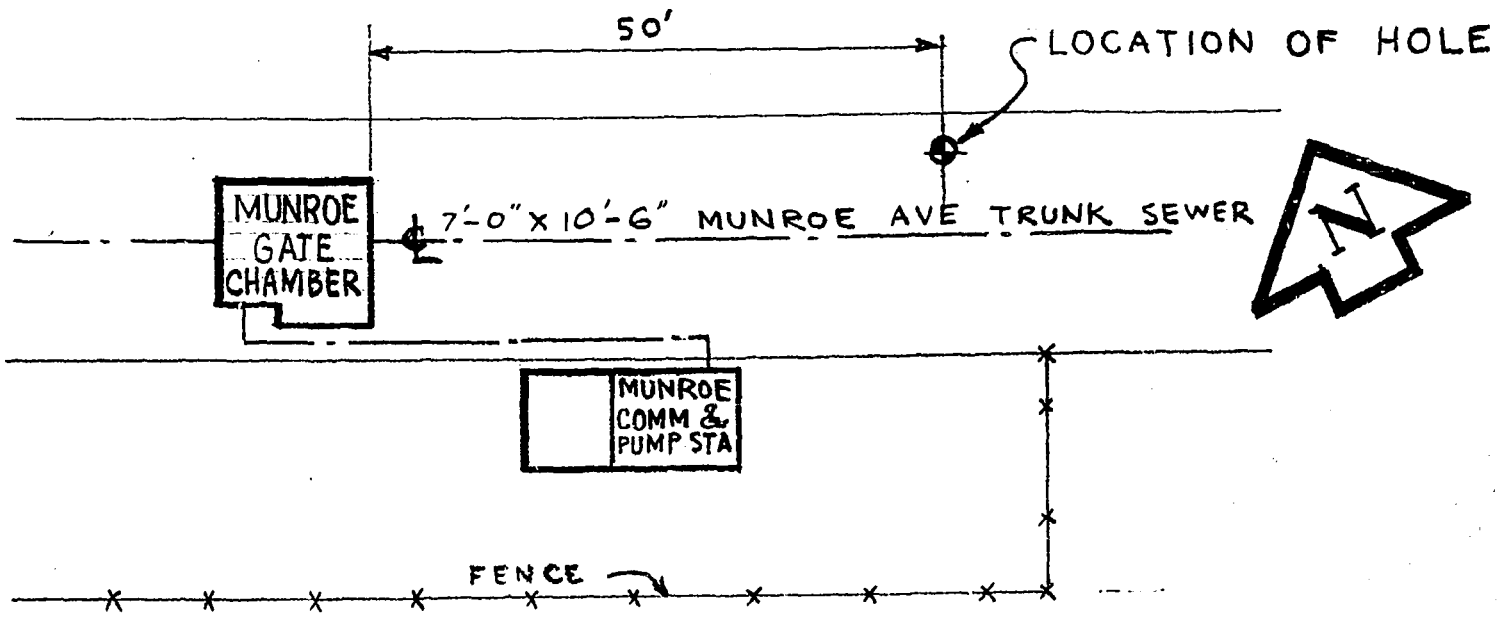
HOLE DRILLED 24 NOV 64
Micro-Filmed 1965

THE METROPOLITAN CORPORATION OF GREATER WINNIPEG
WATERWORKS & WASTE DISPOSAL DIVISIONS
DIRECTOR N. S. BUBBIS

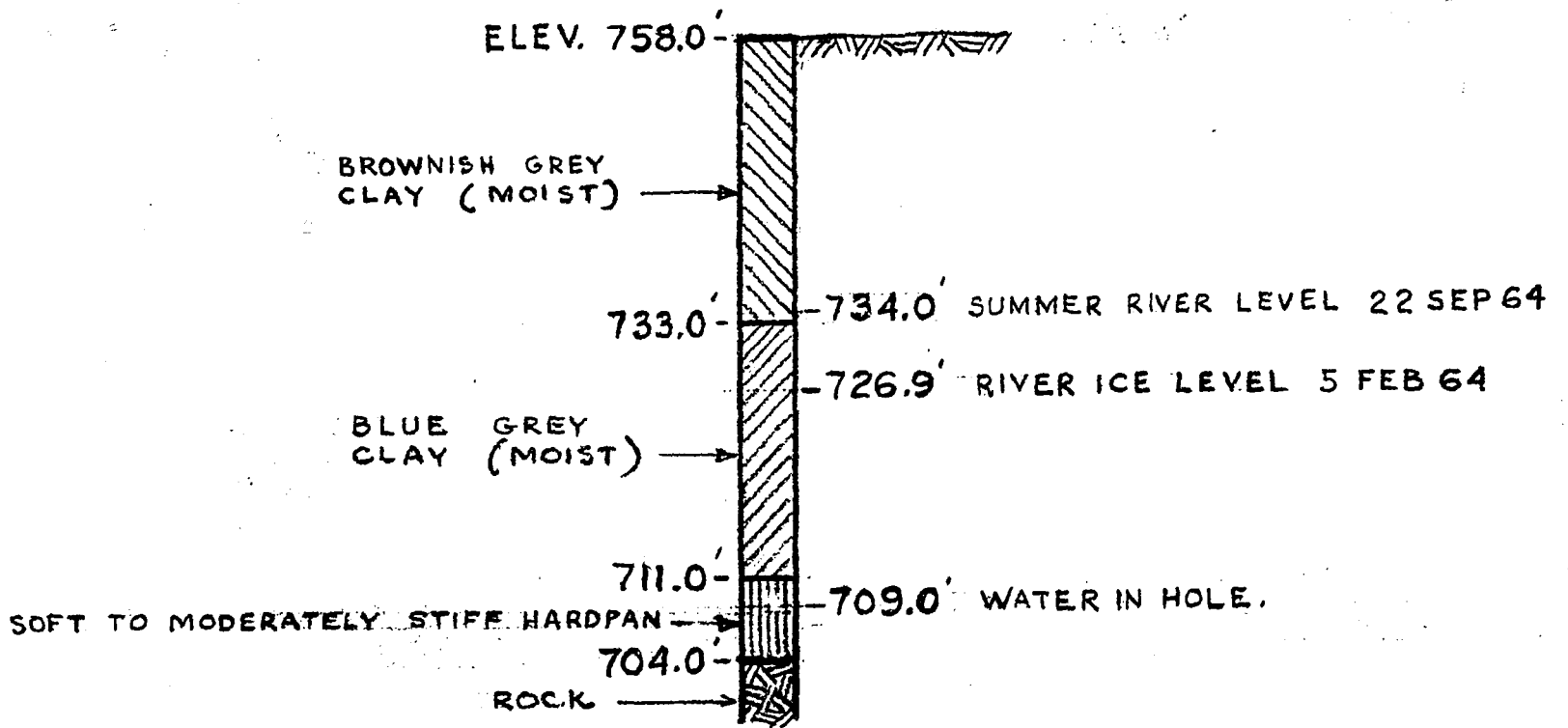
SEWAGE DISPOSAL DEPT. MUNROE - POLSON RIVER X-ING SOIL LOG	DES. R. GIRLING CHKD. <i>[Signature]</i>	SCALES AS NOTED
	DRN. H. BUXMAN DATE 25 NOV 64	DRAWING NO. S-261-A
	ENG. WASTE DISP. <i>A Penman</i>	
	APPROVED <i>[Signature]</i>	

THIS DWG NO TO BE CHANGED TO S-304
AFTER CONTRACT COMPLETED

File # MS 11789



SITE PLAN
SCALE 1" = 20'



VERT. SCALE 1" = 20'

HOLE DRILLED 24 NOV 64

THE METROPOLITAN CORPORATION OF GREATER WINNIPEG
WATERWORKS & WASTE DISPOSAL DIVISIONS
DIRECTOR N.S. BUBBIS

SEWAGE DISPOSAL DEPT.
MUNROE - POLSON RIVER X-ING
SOIL LOG

DES. R. GIRLING CHKD *[Signature]*
DRN. H. BUXMAN DATE 25 NOV 64
ENG. WASTE DISP. *A. Penman*
APPROVED *[Signature]*

SCALES
AS NOTED
DRAWING NO.
S-261

THIS DWG. NO TO BE CHANGED TO S-304
AFTER CONTRACT COMPLETED.

CONNECT TO EXIST.
WATER METER FOR
WATER SUPPLY TO
HYDRAULIC CONTROLS

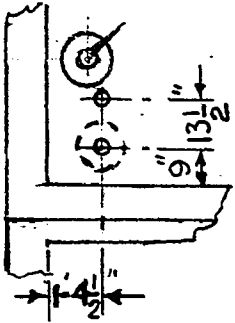
WATER
METER

A

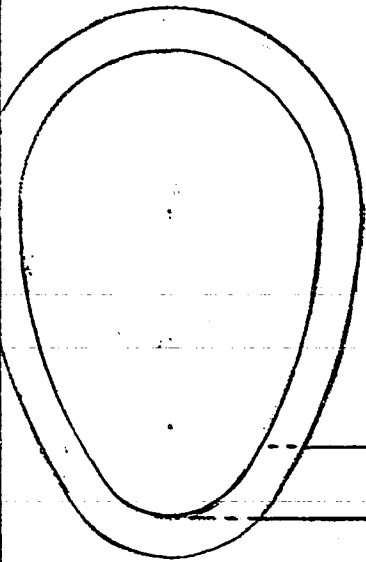
A

12B

PLAN



LOC. OF 2" ϕ FLOAT CONTROL
OPENINGS IN FL. ABOVE
FIELD LOCATE



EXIST. 16" ϕ G.V. TO BE
REMOVED AND NEW 16" ϕ
HYDRAULIC GATE VALVE
TO BE INSTALLED.

NEW STEM
GUIDE

EXIST. W. METER

16'-5"

13

EL. 750.07

EXIST. MUNROE COMM.
& PUMPING STATION

SEC. "A-A"

13

NUMBERS SHOWN CIRCLED THUS
REPRESENT DETAIL NUMBERS.
REFER DWG. S-212 AND S-213.

THE METROPOLITAN CORPORATION OF GREATER WINNIPEG
WATERWORKS & WASTE DISPOSAL DIVISIONS
DIRECTOR - N. S. BUBBIS

SEWAGE DISPOSAL DEPARTMENT

MUNROE-POLSON RIVER X-ING
HYDRAULIC VALVE
INSTALLATION

DES. R. GIRLING CHKD. *[Signature]*

DRN. H. BUXMAN DATE 27 NOV. 64

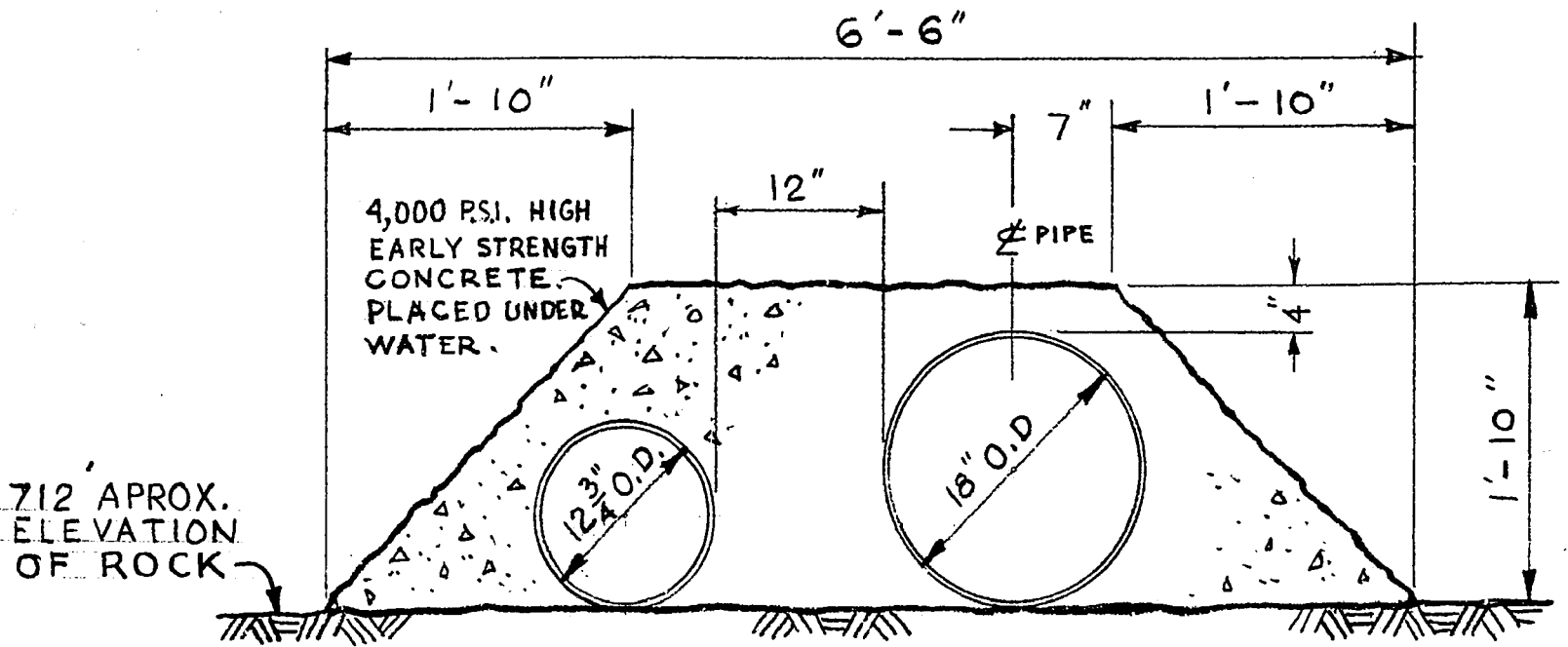
ENG. WASTE DISP. *[Signature]*

APPROVED *[Signature]*

SCALES
 $\frac{3}{16}'' = 1'-0''$

DRAWING NO.

S-305



**TYP. SEC. OF RIVER X-ING
BETWEEN STA'S, 3+40 & 7+40**

REFER DWG. NO. 503

NOTE

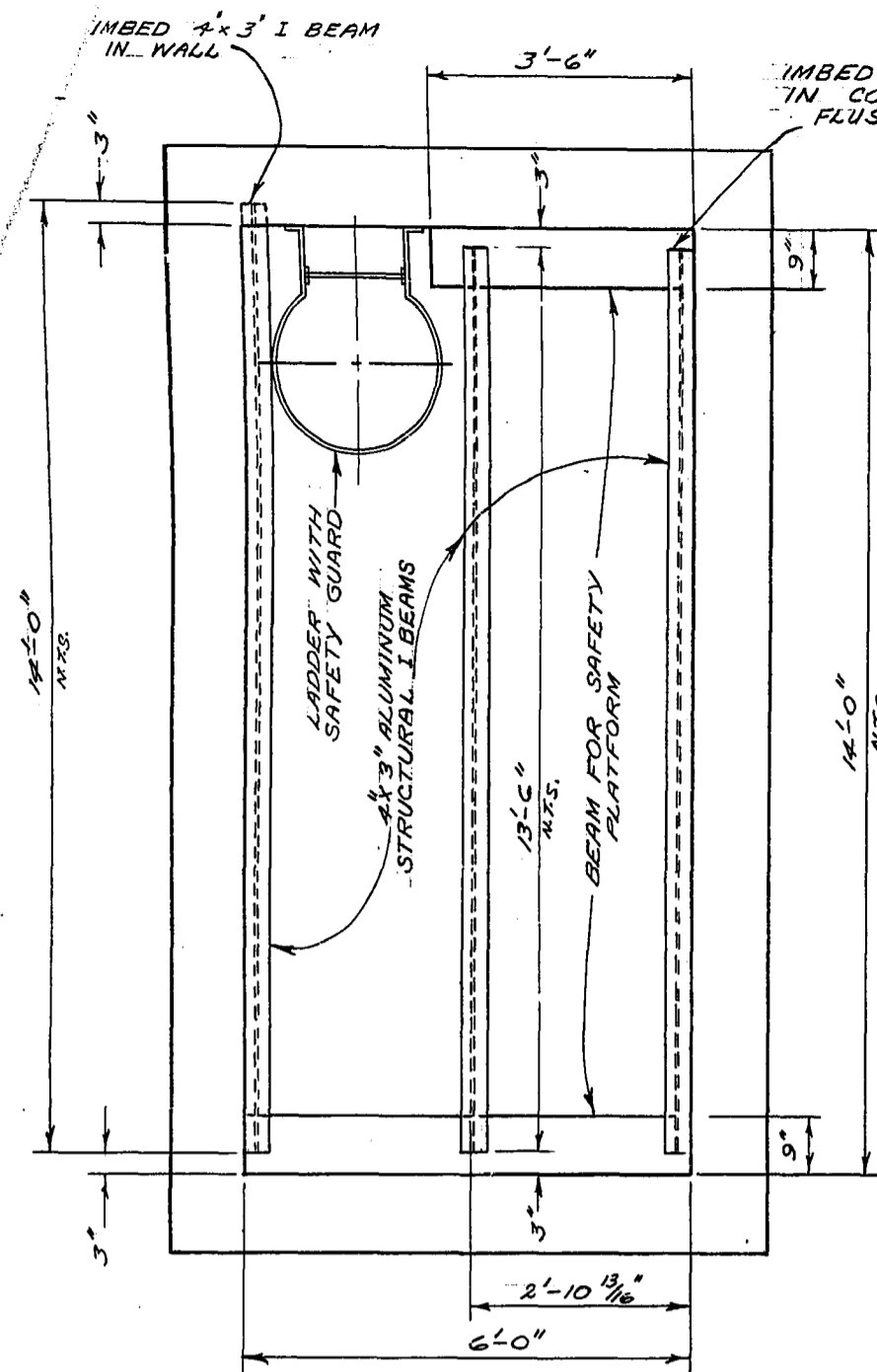
- ① FOR CONC. PLACING DETAILS REFER ADDENDUM NO. 4

THE METROPOLITAN CORPORATION OF GREATER WINNIPEG
WATERWORKS & WASTE DISPOSAL DIVISIONS
DIRECTOR - N. S. BUBBIS

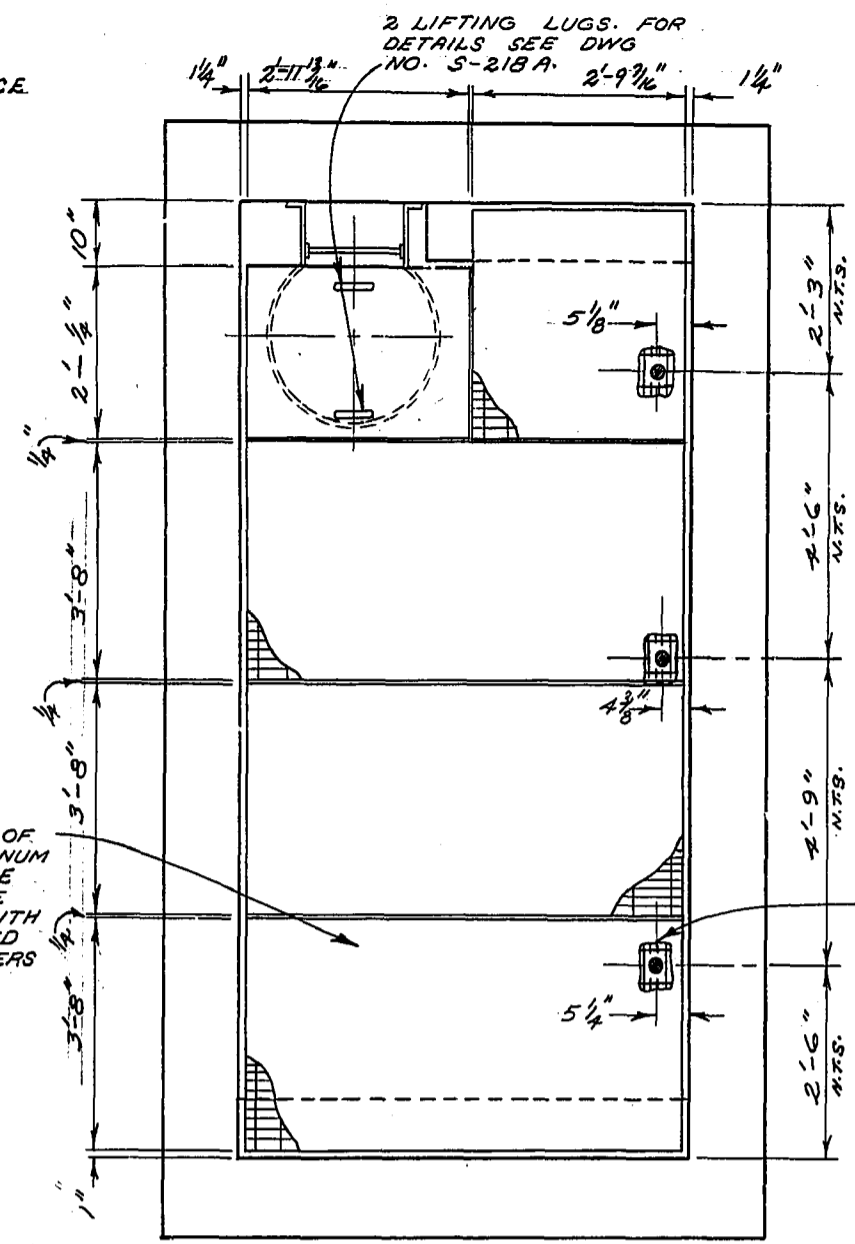
SEWAGE DISPOSAL DEPARTMENT
MUNROE - POLSON RIVER X-ING
BACKFILL DETAILS

DES. R. GIRLING CHKD. *R.G.*
DRN. H. BUXMAN DATE 3 DEC. 64
ENG. WASTE DISP. *A. Penman*
APPROVED *N.S. Bubbis*

SCALES
 $\frac{3}{4}'' = 1'-0''$
DRAWING NO.
S-307

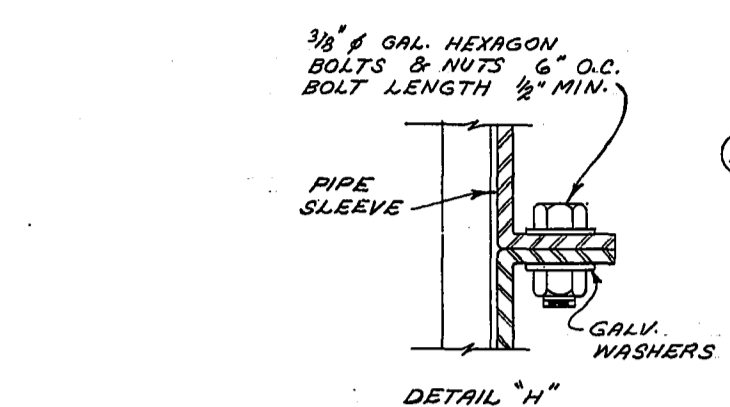


CONCRETE BEAMS AND ANGLE IRON DETAILS

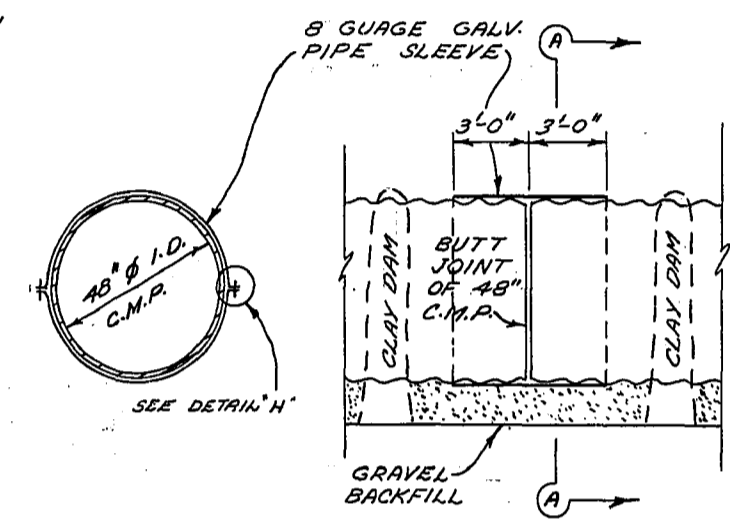


GRATING DETAIL

DETAIL OF SAFETY PLATFORM SIPHON OUTLET CHAMBER

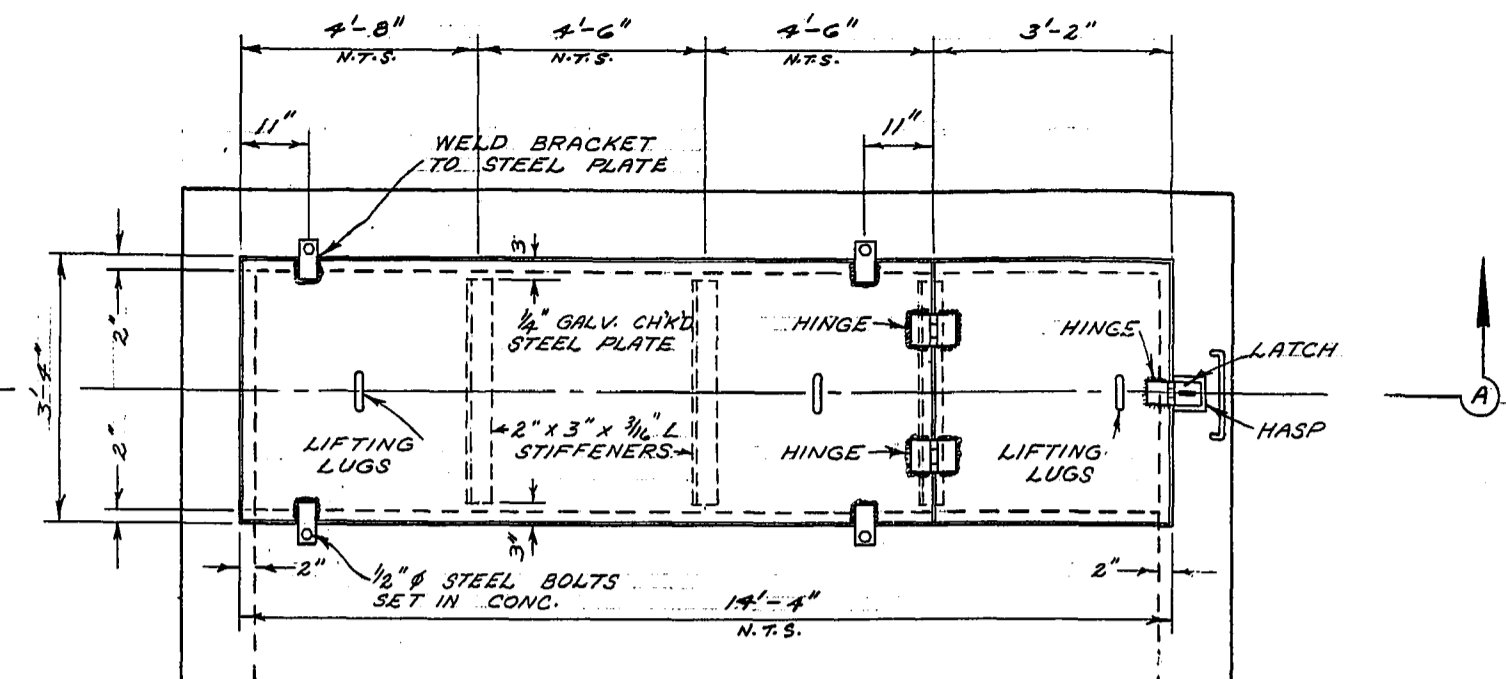


DETAIL "H"

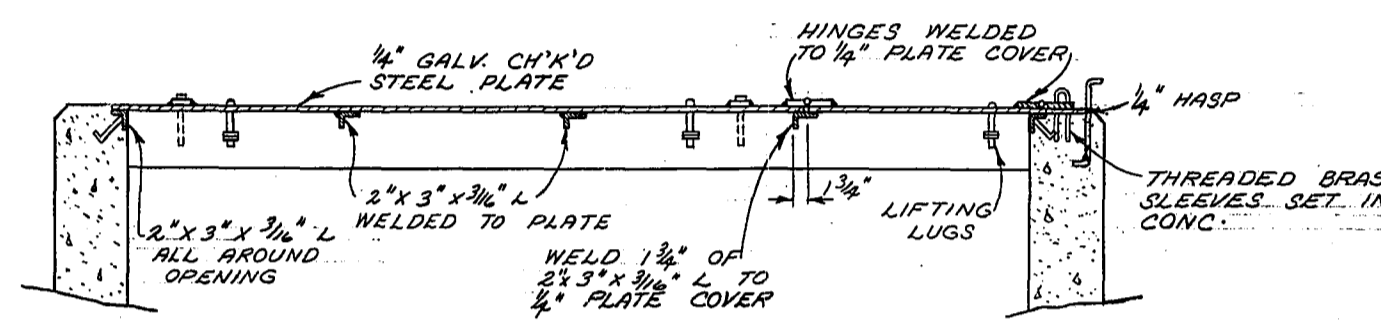


SECTION "A-A"

SLIP JOINT DETAIL

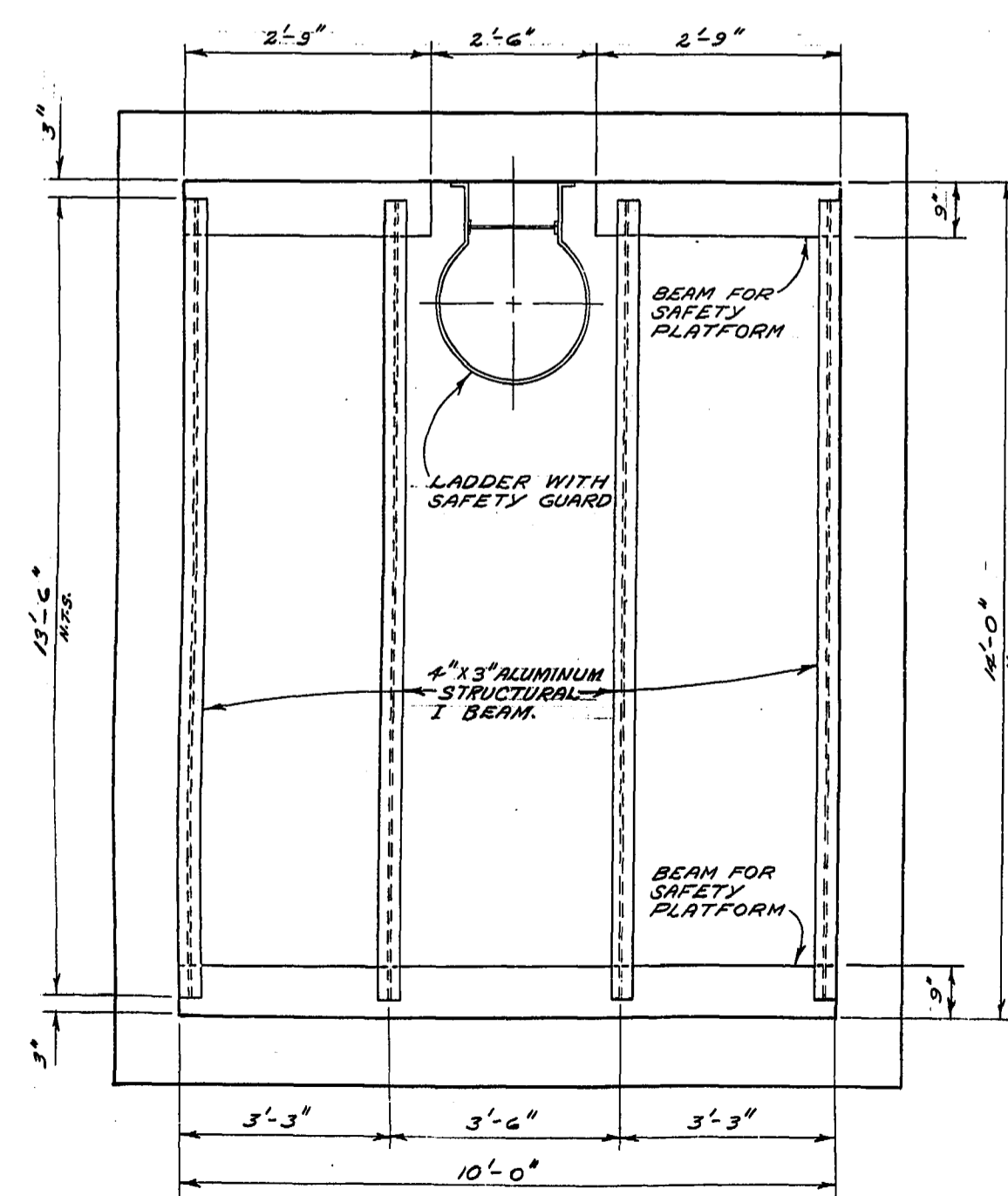


PLAN

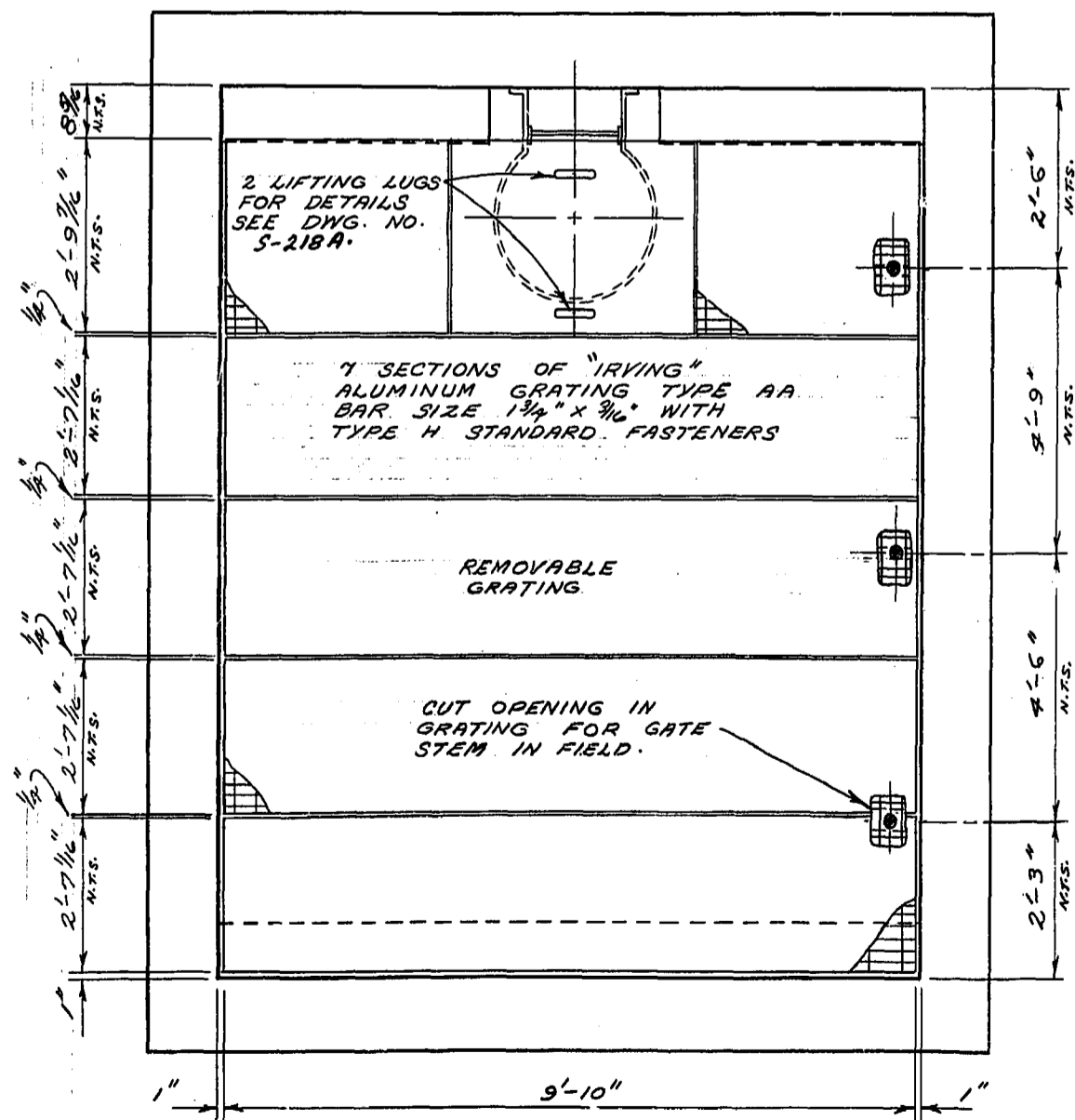


SECTION "A-A"

PLATE COVER FOR INLET AND OUTLET CHAMBERS

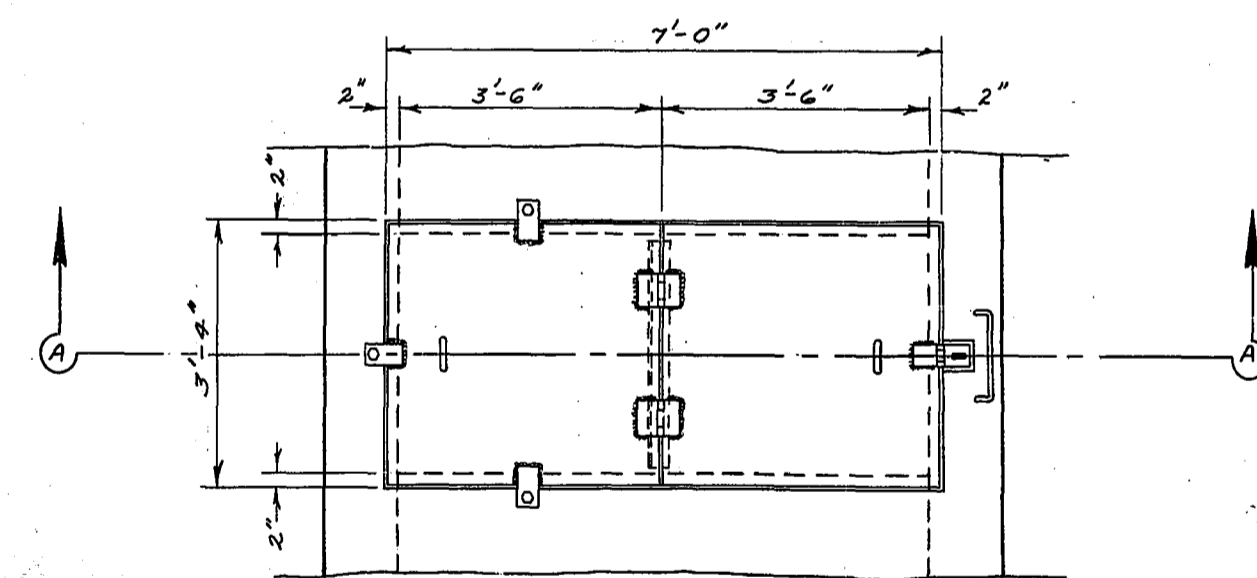


CONCRETE BEAM AND ANGLE IRON DETAIL

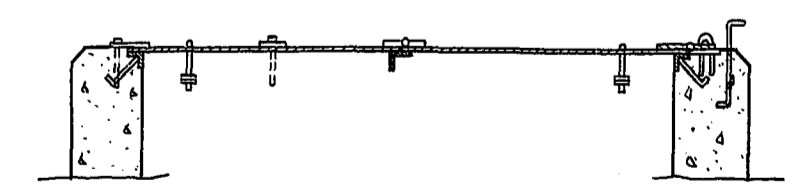


GRATING DETAIL

DETAIL OF SAFETY PLATFORM SIPHON INLET CHAMBER

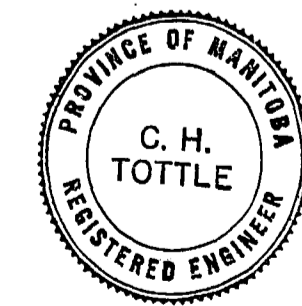


PLAN



SECTION "A-A"

PLATE COVER FOR OVERFLOW CHAMBER



SURVEYED & PLAN CHECKED
BY
APPROVED AS BUILT
D. H. O. S.
MAR. 1972

THE METROPOLITAN CORPORATION OF GREATER WINNIPEG
WATERWORKS & WASTE DISPOSAL DIVISION
PENMAN - DIRECTOR

SEWAGE DISPOSAL DEPT.
NORTH-EAST INTERCEPTOR
RIVER CROSSING
MISC. DETAILS

SCALE
1/2" = 1'-0"
DRAWING NO.
497