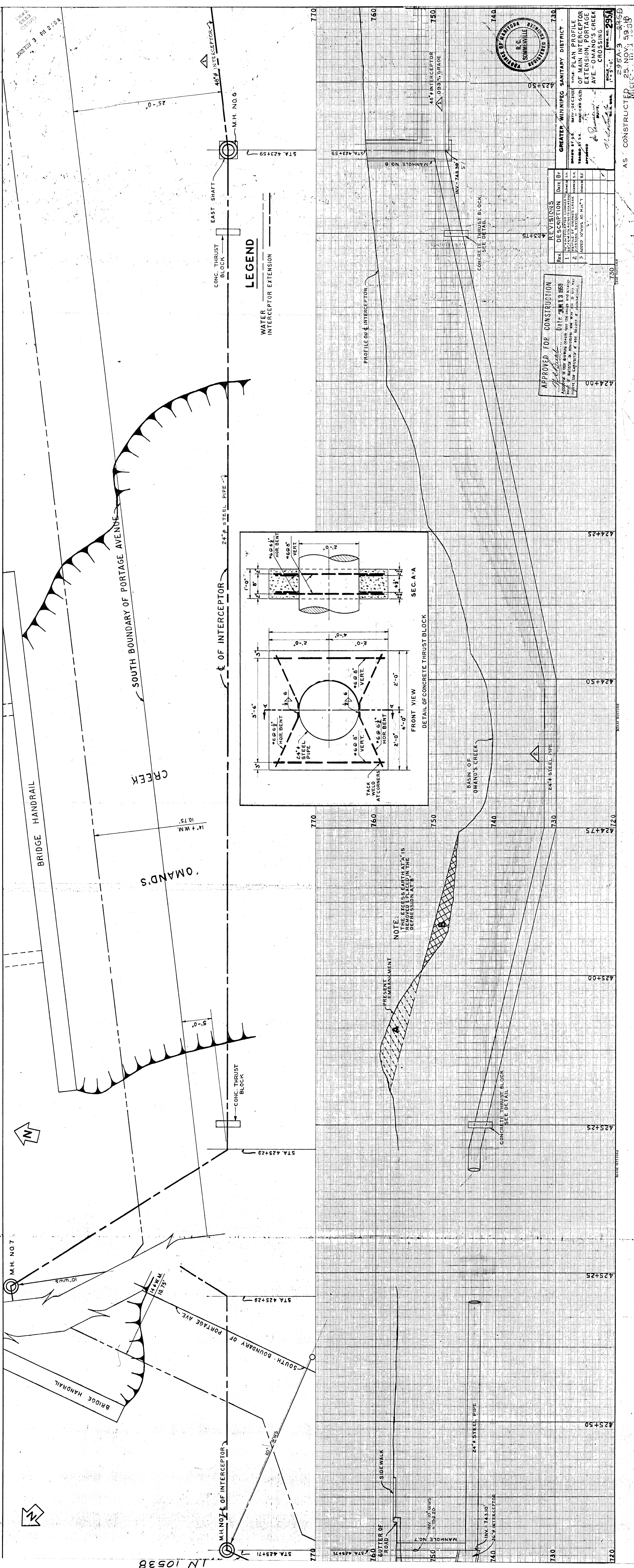


## **APPENDIX B – ADDITIONAL INFORMATION**

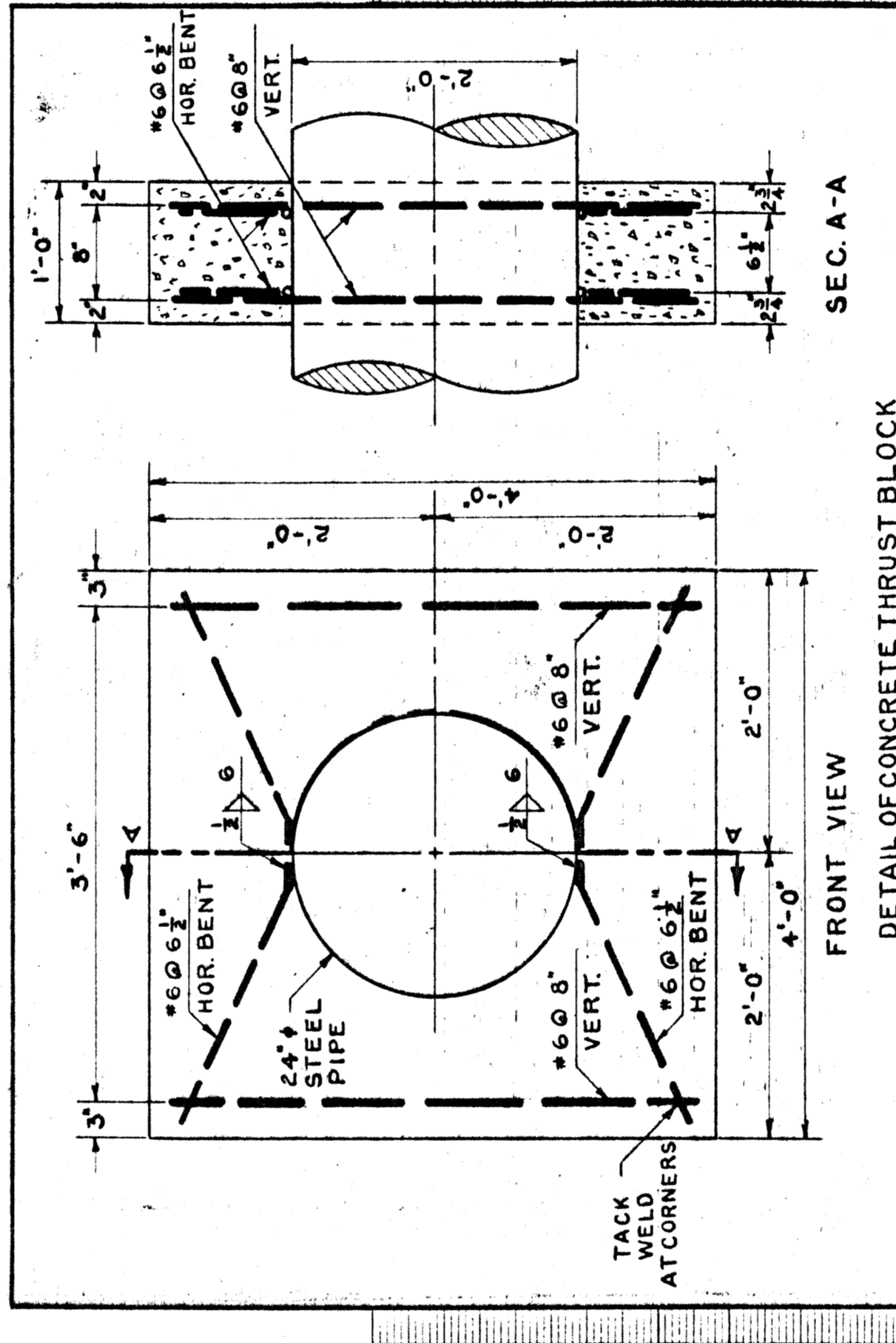
1. Drawing – Plan Profile Main Interceptor Extension, Portage Avenue – Omand’s Creek
2. Drawing - U200-95-06 General Site Plan
3. Drawing - U200-95-06A Creek Channel Cross Sections - South of Culvert
4. Drawing - U200-95-07 Underground Utility Relocations and Related Works
5. Drawing - U200-95-08 Omand’s Creek - Cross Sections and Profile
6. Drawing - U200-95-43 Landscaping and Plan
7. Drawing - U200-95-18 Wingwall Extensions - Piling Layouts and Foundation Plans



**LEGEND**

WATER INTERCEPTOR EXTENSION

CONC. THRUST BLOCK



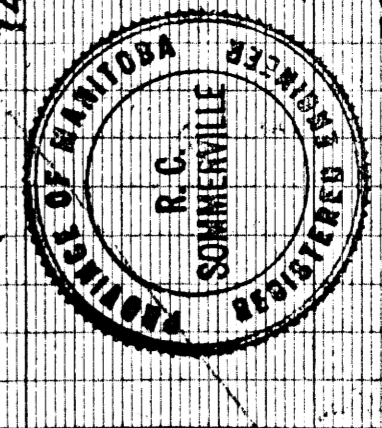
NOTE:  
THE EXCESS EARTH THAT IS  
REMOVED & PLACED IN THE  
DEPRESSION AT 'B'

**APPROVED FOR CONSTRUCTION**

*[Signature]* Date: **JAN 13 1950**

Approved by City Engineer  
City of Winnipeg  
Winnipeg, Manitoba

REV.	DESCRIPTION	DATE	BY
1	REVISIONS		
2			
3			



**GREATER WINNIPEG SANITARY DISTRICT**

DATE: **295A-3**

PROJECT: **PLAN PROFILE OF MAIN INTERCEPTOR EXTENSION ON PORTAGE AVE. - OMAND'S CREEK CROSSING**

AS CONSTRUCTED 25 NOV. 1950

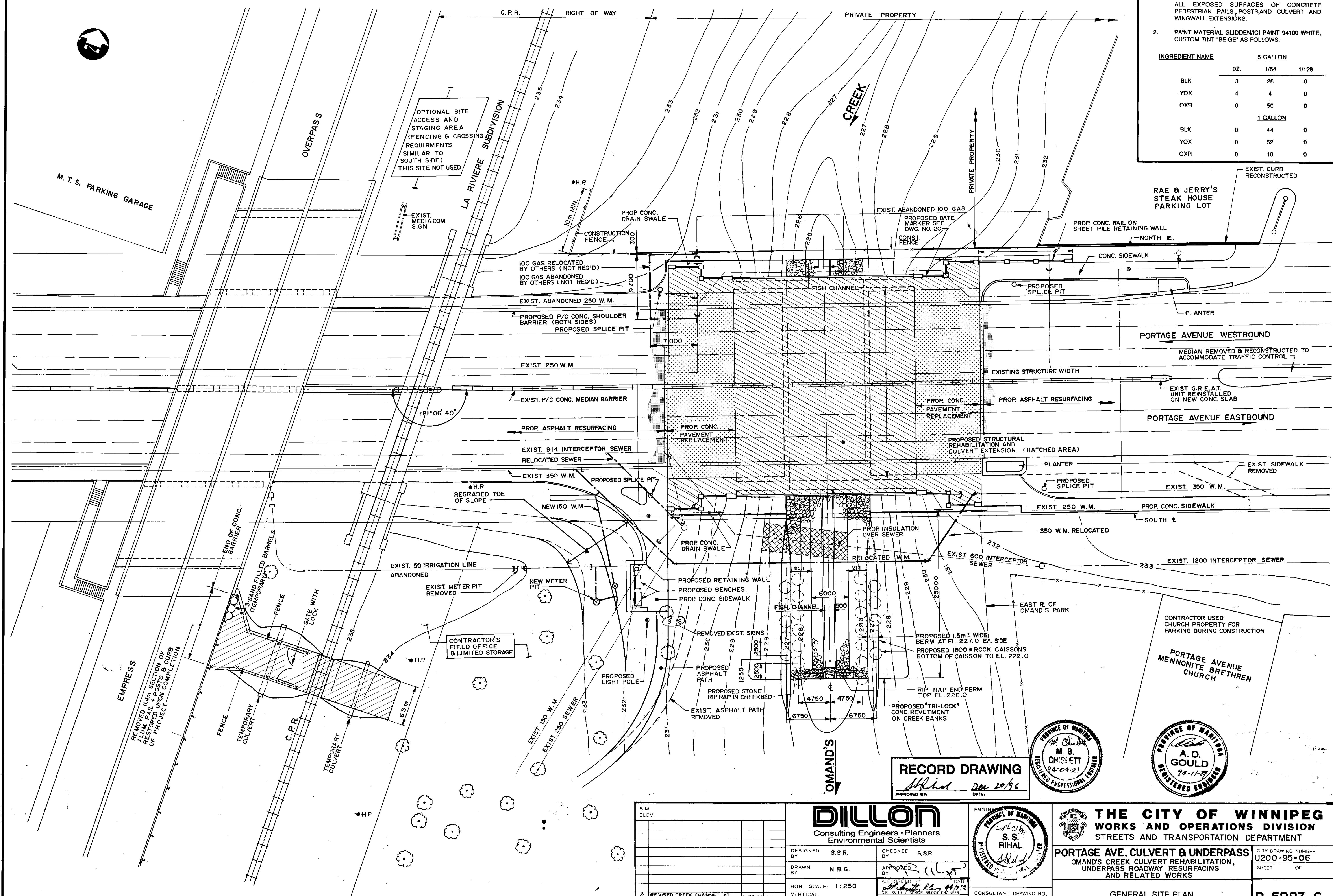
DWG 295A REV 3 DETAILS 295A-3

FM 10081 IN 10538

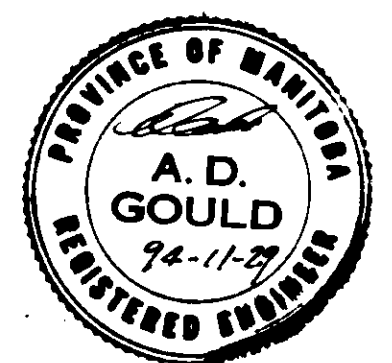
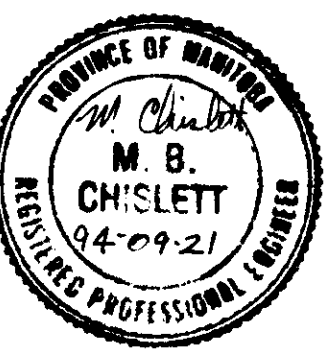
**NOTES ON PAINTING:**

- ONE COAT OF EXTERIOR LATEX PAINT APPLIED AT ALL EXPOSED SURFACES OF CONCRETE PEDESTRIAN RAILS, POSTS, AND CULVERT AND WINGWALL EXTENSIONS.
- PAINT MATERIAL: GLIDDEN/ICI PAINT 94100 WHITE, CUSTOM TINT "BEIGE" AS FOLLOWS:

INGREDIENT NAME	5 GALLON		
	OZ.	1/64	1/128
BLK	3	28	0
YOX	4	4	0
OXR	0	50	0
1 GALLON			
BLK	0	44	0
YOX	0	52	0
OXR	0	10	0



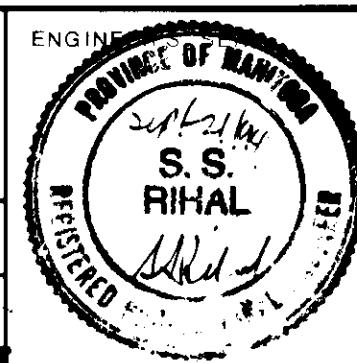
**RECORD DRAWING**  
 Approved by: *[Signature]* Date: *Dec 20/96*



NO.	REVISIONS	DATE	BY
1	REVISED CREEK CHANNEL AT SOUTH END CULVERT	11-30-94	S.S.R.

**DILLON**  
 Consulting Engineers • Planners  
 Environmental Scientists

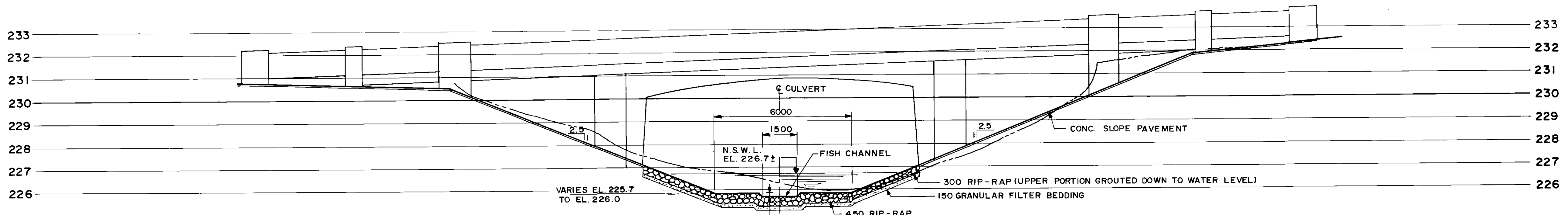
DESIGNED BY	S.S.R.	CHECKED BY	S.S.R.
DRAWN BY	N.B.G.	APPROVED BY	<i>[Signature]</i>
HOR. SCALE:	1:250	AUTHORIZED BY	<i>[Signature]</i>
VERTICAL:		DATE	11/12
DATE	SEPT 1994	DATE	11/12



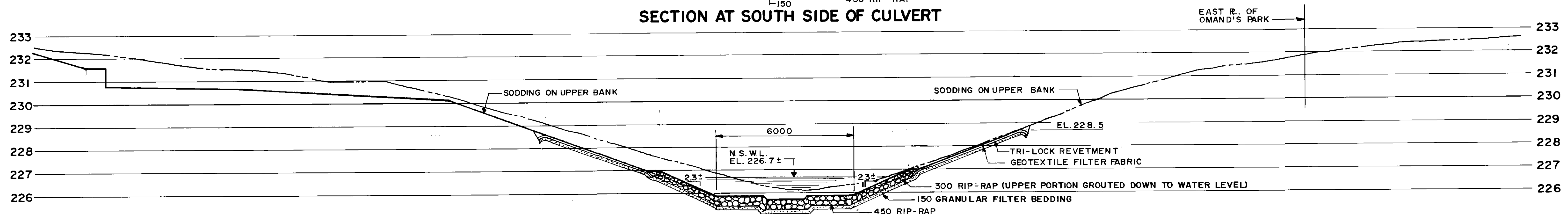
**THE CITY OF WINNIPEG**  
 WORKS AND OPERATIONS DIVISION  
 STREETS AND TRANSPORTATION DEPARTMENT

**PORTAGE AVE. CULVERT & UNDERPASS**  
 OMAND'S CREEK CULVERT REHABILITATION,  
 UNDERPASS ROADWAY RESURFACING  
 AND RELATED WORKS

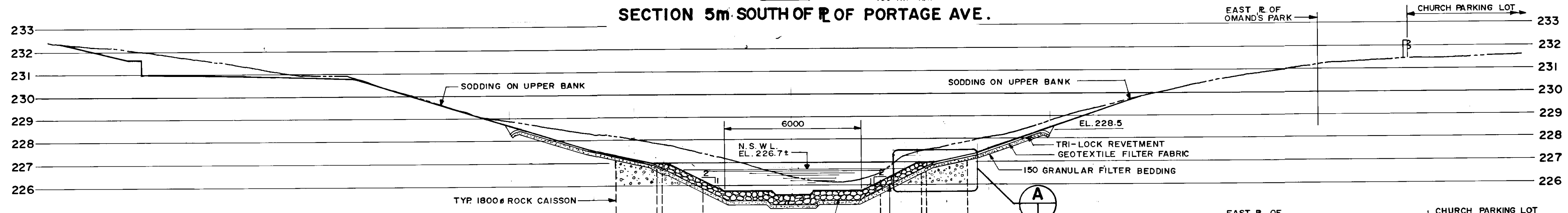
GENERAL SITE PLAN  
 CITY DRAWING NUMBER: U200-95-06  
 SHEET OF: 1  
**B-5983-6**



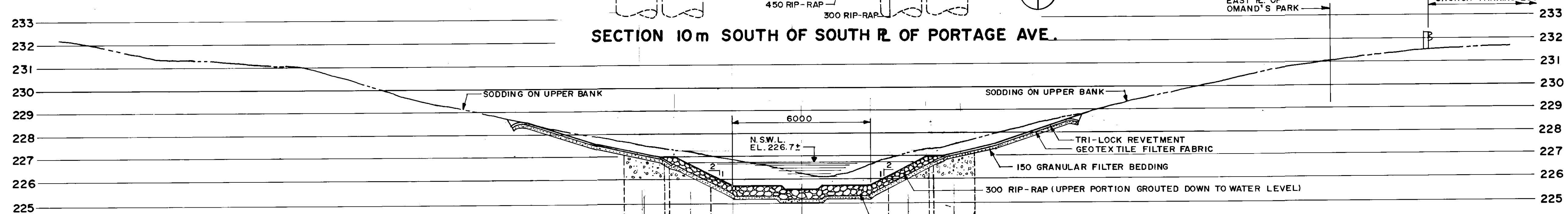
SECTION AT SOUTH SIDE OF CULVERT



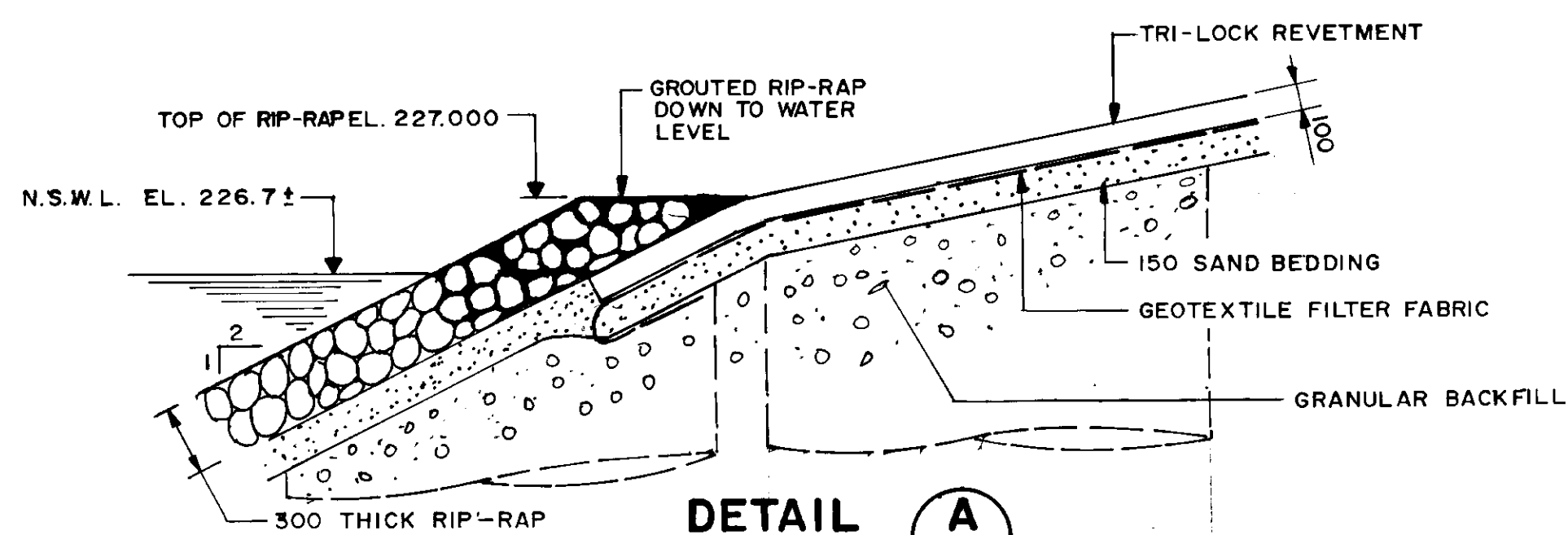
SECTION 5m SOUTH OF R. OF PORTAGE AVE.



SECTION 10m SOUTH OF SOUTH R. OF PORTAGE AVE.



SECTION 20m SOUTH OF SOUTH R. OF PORTAGE AVE.



LOCATION APPROVED UNDERGROUND STRUCTURES

DESIGNED BY W.P.S./SSR. CHECKED BY S.SR.  
 DRAWN BY W.P.S./NBG. APPROVED BY [Signature]  
 HOR. SCALE: 1:100 OR VERTICAL: NOTED  
 DATE NOV. 1994

NO.	REVISIONS	DATE	BY

**DILLON**  
 Consulting Engineers • Planners  
 Environmental Scientists

PROVINCE OF MANITOBA  
 A.D. GOULD  
 94-11-27  
 REGISTERED PROFESSIONAL ENGINEER

PROVINCE OF MANITOBA  
 Nov. 29/94  
 S.S. RIHAL  
 REGISTERED PROFESSIONAL ENGINEER

CONSULTANT DRAWING NO. 92-3813-02-06A

**RECORD DRAWING**  
 APPROVED BY [Signature] DATE 20/20/96

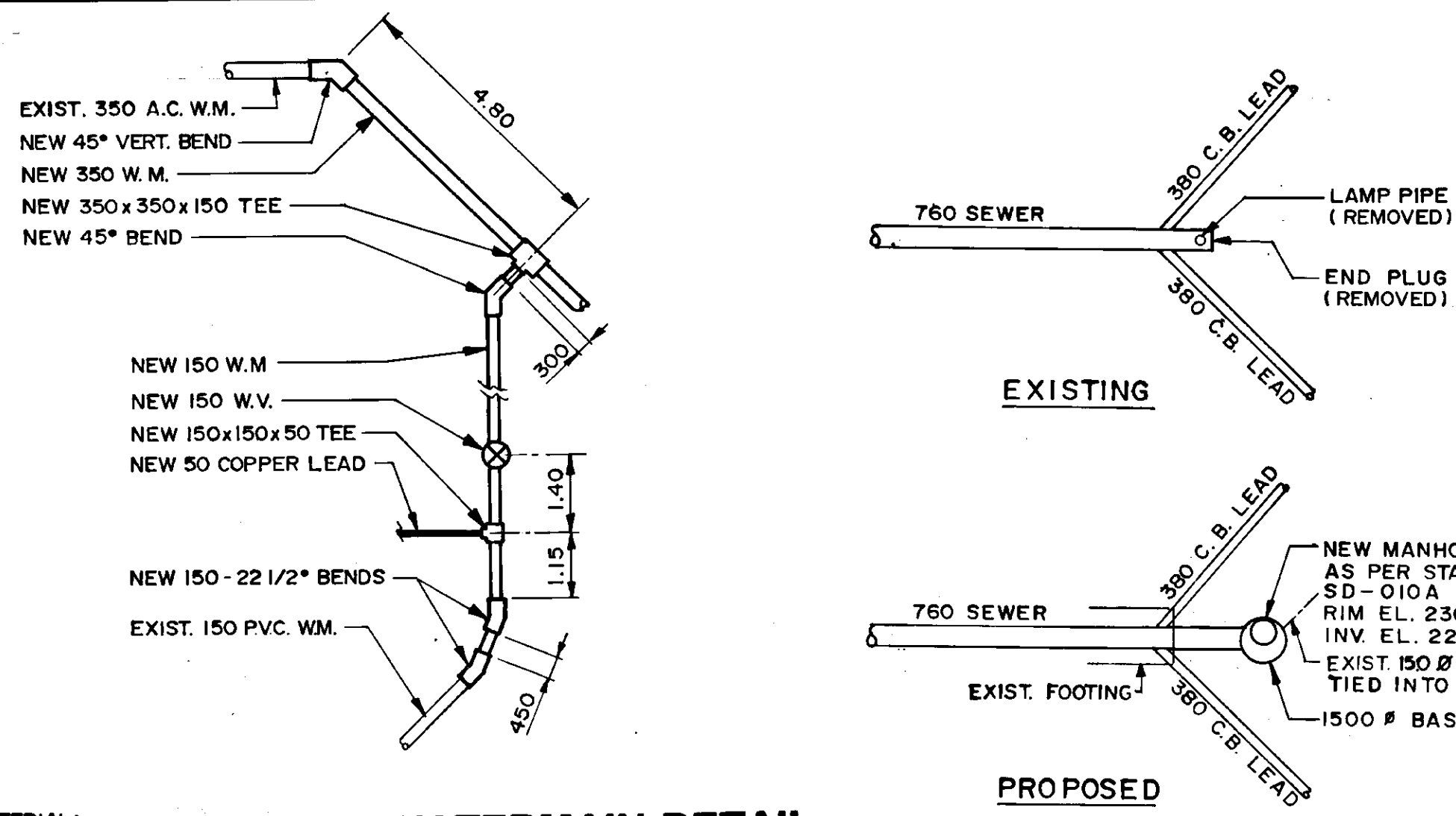
**THE CITY OF WINNIPEG**  
 WORKS AND OPERATIONS DIVISION  
 STREETS AND TRANSPORTATION DEPARTMENT

**PORTAGE AVE. CULVERT & UNDERPASS**  
 OMAND'S CREEK CULVERT REHABILITATION,  
 UNDERPASS ROADWAY RESURFACING  
 AND RELATED WORKS

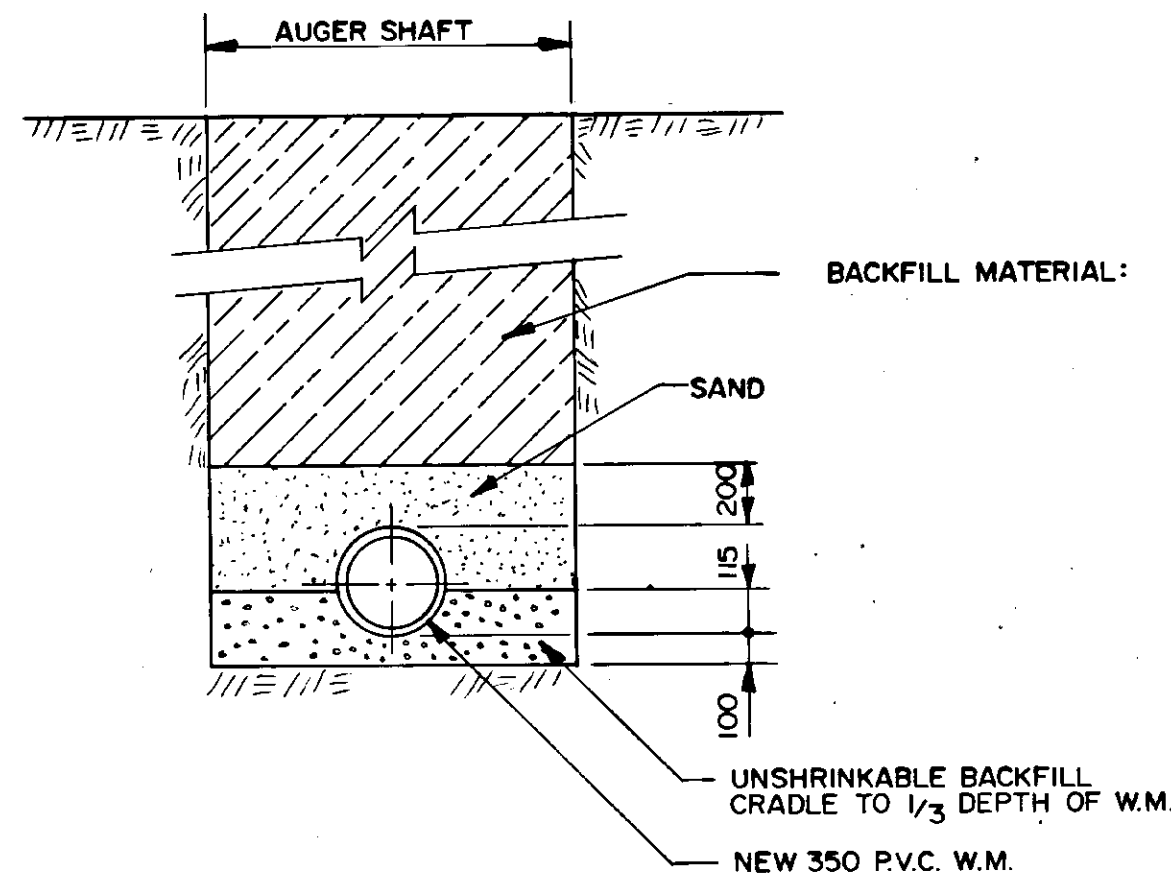
CITY DRAWING NUMBER U200-95-06A  
 SHEET OF

CREEK CHANNEL CROSS SECTIONS SOUTH OF CULVERT

**B-5983-6A**



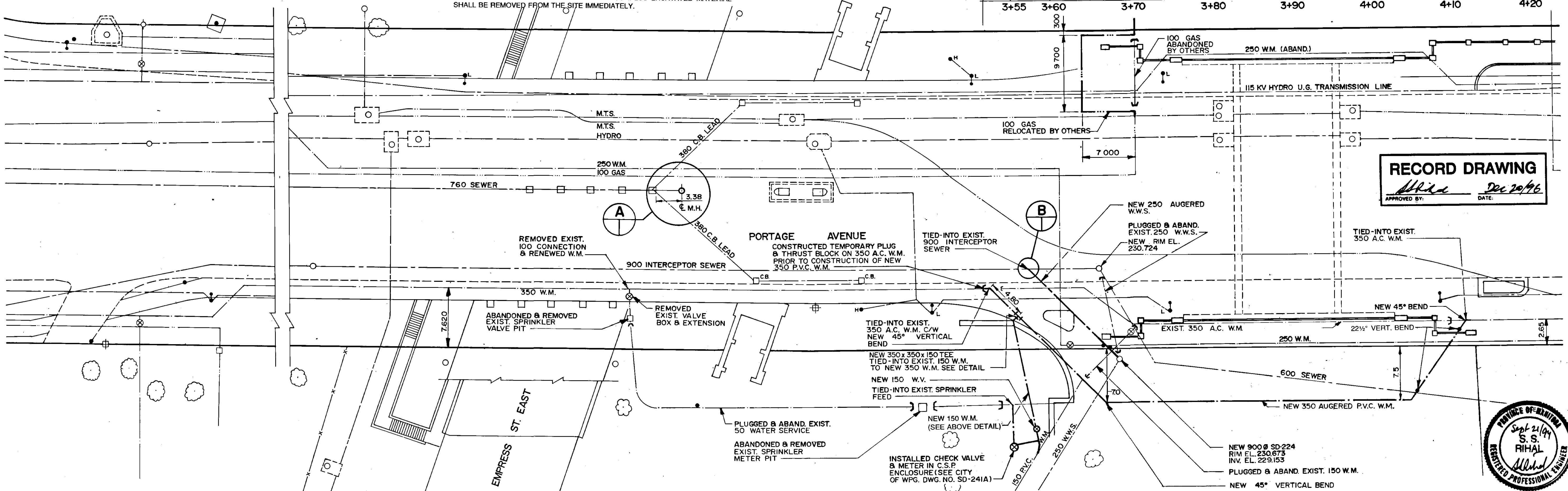
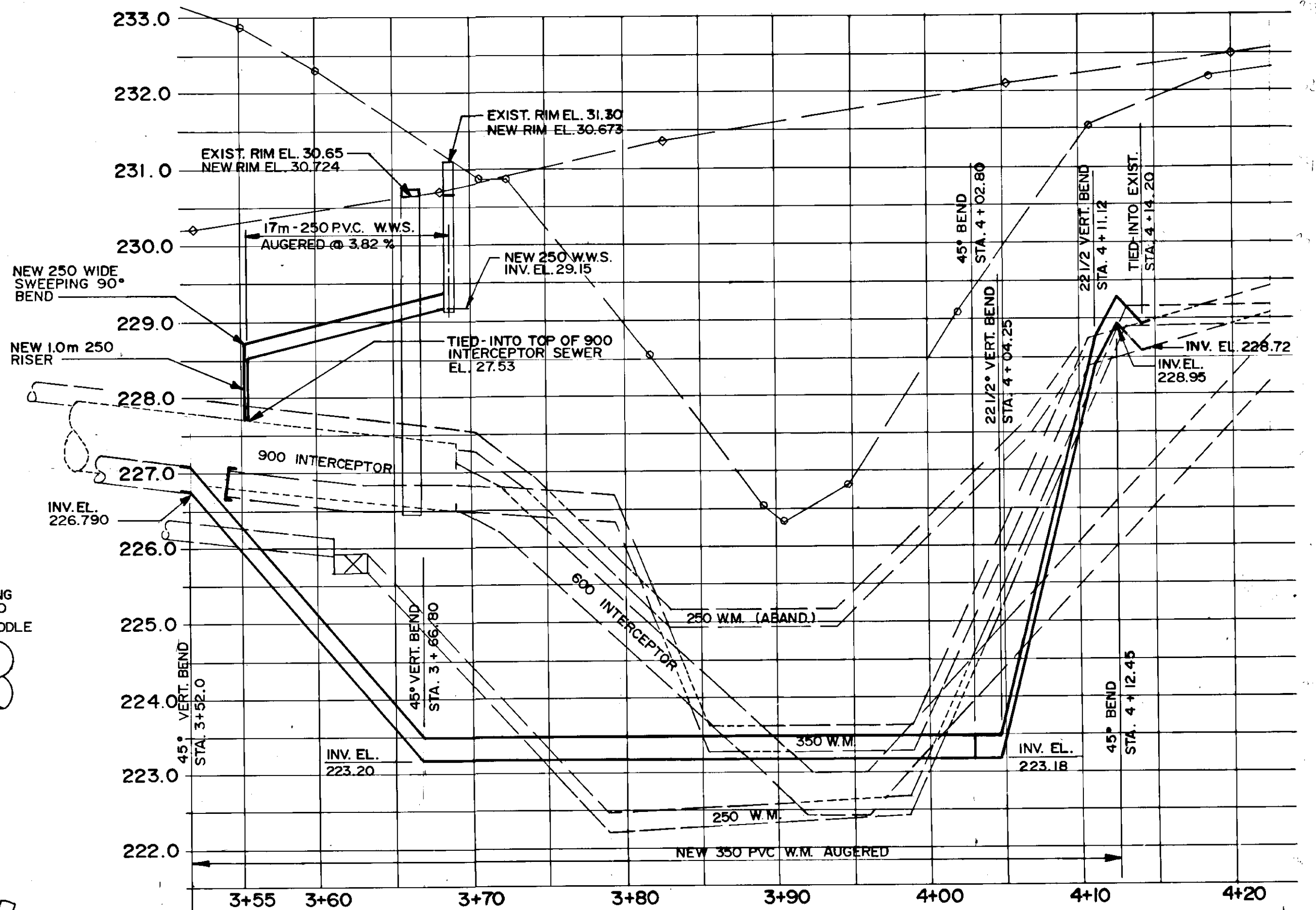
**NEW 150 Ø WATERMAIN DETAIL**  
N.T.S.



**AUGER SHAFT DETAIL**  
SCALE 1:25

**NOTES**

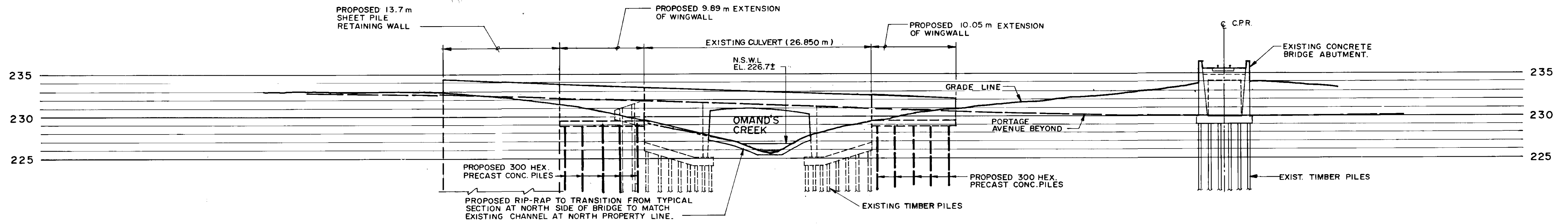
- SHAFTS FOR WATERMAIN INSTALLATION TO BE BACKFILLED WITH INSITU MATERIAL OR AS INDICATED ON AUGER SHAFT DETAIL.
- THE WATERMAIN SHALL BE INSTALLED BY AUGERING. IF AUGERING IS DETERMINED BY THE CONTRACT ADMINISTRATOR TO BE IMPOSSIBLE, THEN AN APPROVED OPEN CUT INSTALLATION MAY BE REQUIRED.
- EXCAVATED MATERIAL SHALL AT NO TIME BE STOCKPILED AT OR NEAR THE TOP EDGE OF THE EMBANKMENT AND SLOPES. SURPLUS EXCAVATED MATERIAL SHALL BE REMOVED FROM THE SITE IMMEDIATELY.



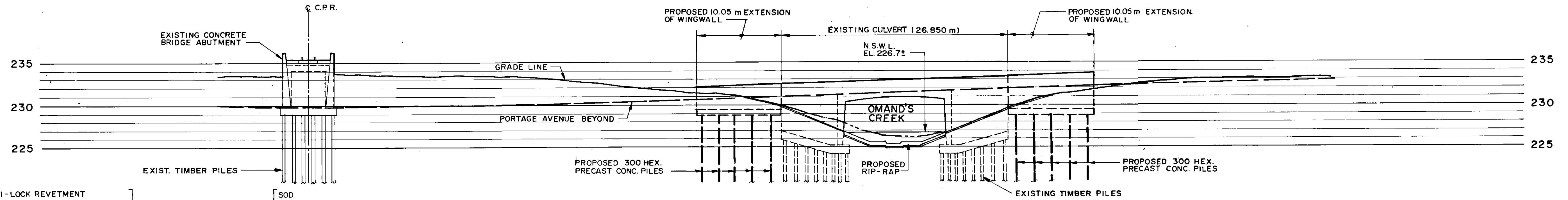
**RECORD DRAWING**  
APPROVED BY: *[Signature]* DATE: Dec 20/96



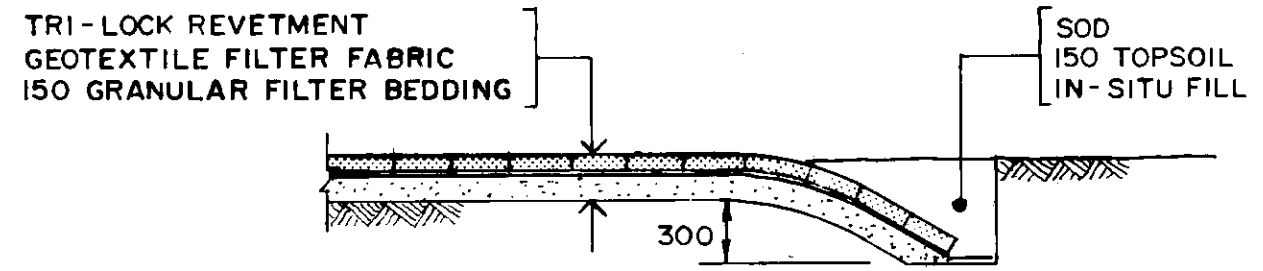
150 mm W.M.	150 mm W.M.	HYDRO	150 mm W.M.	150 mm W.M.	150 mm W.M.
○	○	M.T.S.	○	○	○
⊗	⊗	CONCRETE	⊗	⊗	⊗
⊕	⊕	ASPHALT	⊕	⊕	⊕
⊖	⊖	PROPERTY LINE	⊖	⊖	⊖
⊙	⊙	SURVEY BAR	⊙	⊙	⊙
⊚	⊚		⊚	⊚	⊚
⊛	⊛		⊛	⊛	⊛
⊜	⊜		⊜	⊜	⊜
⊝	⊝		⊝	⊝	⊝
⊞	⊞		⊞	⊞	⊞
⊟	⊟		⊟	⊟	⊟
⊠	⊠		⊠	⊠	⊠
⊡	⊡		⊡	⊡	⊡
⊢	⊢		⊢	⊢	⊢
⊣	⊣		⊣	⊣	⊣
⊤	⊤		⊤	⊤	⊤
⊥	⊥		⊥	⊥	⊥
⊦	⊦		⊦	⊦	⊦
⊧	⊧		⊧	⊧	⊧
⊨	⊨		⊨	⊨	⊨
⊩	⊩		⊩	⊩	⊩
⊪	⊪		⊪	⊪	⊪
⊫	⊫		⊫	⊫	⊫
⊬	⊬		⊬	⊬	⊬
⊭	⊭		⊭	⊭	⊭
⊮	⊮		⊮	⊮	⊮
⊯	⊯		⊯	⊯	⊯
⊰	⊰		⊰	⊰	⊰
⊱	⊱		⊱	⊱	⊱
⊲	⊲		⊲	⊲	⊲
⊳	⊳		⊳	⊳	⊳
⊴	⊴		⊴	⊴	⊴
⊵	⊵		⊵	⊵	⊵
⊶	⊶		⊶	⊶	⊶
⊷	⊷		⊷	⊷	⊷
⊸	⊸		⊸	⊸	⊸
⊹	⊹		⊹	⊹	⊹
⊺	⊺		⊺	⊺	⊺
⊻	⊻		⊻	⊻	⊻
⊼	⊼		⊼	⊼	⊼
⊽	⊽		⊽	⊽	⊽
⊾	⊾		⊾	⊾	⊾
⊿	⊿		⊿	⊿	⊿
⊀	⊀		⊀	⊀	⊀
⊁	⊁		⊁	⊁	⊁
⊂	⊂		⊂	⊂	⊂
⊃	⊃		⊃	⊃	⊃
⊄	⊄		⊄	⊄	⊄
⊅	⊅		⊅	⊅	⊅
⊆	⊆		⊆	⊆	⊆
⊇	⊇		⊇	⊇	⊇
⊈	⊈		⊈	⊈	⊈
⊉	⊉		⊉	⊉	⊉
⊊	⊊		⊊	⊊	⊊
⊋	⊋		⊋	⊋	⊋
⊌	⊌		⊌	⊌	⊌
⊍	⊍		⊍	⊍	⊍
⊎	⊎		⊎	⊎	⊎
⊏	⊏		⊏	⊏	⊏
⊐	⊐		⊐	⊐	⊐
⊑	⊑		⊑	⊑	⊑
⊒	⊒		⊒	⊒	⊒
⊓	⊓		⊓	⊓	⊓
⊔	⊔		⊔	⊔	⊔
⊕	⊕		⊕	⊕	⊕
⊖	⊖		⊖	⊖	⊖
⊗	⊗		⊗	⊗	⊗
⊘	⊘		⊘	⊘	⊘
⊙	⊙		⊙	⊙	⊙
⊚	⊚		⊚	⊚	⊚
⊛	⊛		⊛	⊛	⊛
⊜	⊜		⊜	⊜	⊜
⊝	⊝		⊝	⊝	⊝
⊞	⊞		⊞	⊞	⊞
⊟	⊟		⊟	⊟	⊟
⊠	⊠		⊠	⊠	⊠
⊡	⊡		⊡	⊡	⊡
⊢	⊢		⊢	⊢	⊢
⊣	⊣		⊣	⊣	⊣
⊤	⊤		⊤	⊤	⊤
⊥	⊥		⊥	⊥	⊥
⊦	⊦		⊦	⊦	⊦
⊧	⊧		⊧	⊧	⊧
⊨	⊨		⊨	⊨	⊨
⊩	⊩		⊩	⊩	⊩
⊪	⊪		⊪	⊪	⊪
⊫	⊫		⊫	⊫	⊫
⊬	⊬		⊬	⊬	⊬
⊭	⊭		⊭	⊭	⊭
⊮	⊮		⊮	⊮	⊮
⊯	⊯		⊯	⊯	⊯
⊰	⊰		⊰	⊰	⊰
⊱	⊱		⊱	⊱	⊱
⊲	⊲		⊲	⊲	⊲
⊳	⊳		⊳	⊳	⊳
⊴	⊴		⊴	⊴	⊴
⊵	⊵		⊵	⊵	⊵
⊶	⊶		⊶	⊶	⊶
⊷	⊷		⊷	⊷	⊷
⊸	⊸		⊸	⊸	⊸
⊹	⊹		⊹	⊹	⊹
⊺	⊺		⊺	⊺	⊺
⊻	⊻		⊻	⊻	⊻
⊼	⊼		⊼	⊼	⊼
⊽	⊽		⊽	⊽	⊽
⊾	⊾		⊾	⊾	⊾
⊿	⊿		⊿	⊿	⊿
⊀	⊀		⊀	⊀	⊀
⊁	⊁		⊁	⊁	⊁
⊂	⊂		⊂	⊂	⊂
⊃	⊃		⊃	⊃	⊃
⊄	⊄		⊄	⊄	⊄
⊅	⊅		⊅	⊅	⊅
⊆	⊆		⊆	⊆	⊆
⊇	⊇		⊇	⊇	⊇
⊈	⊈		⊈	⊈	⊈
⊉	⊉		⊉	⊉	⊉
⊊	⊊		⊊	⊊	⊊
⊋	⊋		⊋	⊋	⊋
⊌	⊌		⊌	⊌	⊌
⊍	⊍		⊍	⊍	⊍
⊎	⊎		⊎	⊎	⊎
⊏	⊏		⊏	⊏	⊏
⊐	⊐		⊐	⊐	⊐
⊑	⊑		⊑	⊑	⊑
⊒	⊒		⊒	⊒	⊒
⊓	⊓		⊓	⊓	⊓
⊔	⊔		⊔	⊔	⊔
⊕	⊕		⊕	⊕	⊕
⊖	⊖		⊖	⊖	⊖
⊗	⊗		⊗	⊗	⊗
⊘	⊘		⊘	⊘	⊘
⊙	⊙		⊙	⊙	⊙
⊚	⊚		⊚	⊚	⊚
⊛	⊛		⊛	⊛	⊛
⊜	⊜		⊜	⊜	⊜
⊝	⊝		⊝	⊝	⊝
⊞	⊞		⊞	⊞	⊞
⊟	⊟		⊟	⊟	⊟
⊠	⊠		⊠	⊠	⊠
⊡	⊡		⊡	⊡	⊡
⊢	⊢		⊢	⊢	⊢
⊣	⊣		⊣	⊣	⊣
⊤	⊤		⊤	⊤	⊤
⊥	⊥		⊥	⊥	⊥
⊦	⊦		⊦	⊦	⊦
⊧	⊧		⊧	⊧	⊧
⊨	⊨		⊨	⊨	⊨
⊩	⊩		⊩	⊩	⊩
⊪	⊪		⊪	⊪	⊪
⊫	⊫		⊫	⊫	⊫
⊬	⊬		⊬	⊬	⊬
⊭	⊭		⊭	⊭	⊭
⊮	⊮		⊮	⊮	⊮
⊯	⊯		⊯	⊯	⊯
⊰	⊰		⊰	⊰	⊰
⊱	⊱		⊱	⊱	⊱
⊲	⊲		⊲	⊲	⊲
⊳	⊳		⊳	⊳	⊳
⊴	⊴		⊴	⊴	⊴
⊵	⊵		⊵	⊵	⊵
⊶	⊶		⊶	⊶	⊶
⊷	⊷		⊷	⊷	⊷
⊸	⊸		⊸	⊸	⊸
⊹	⊹		⊹	⊹	⊹
⊺	⊺		⊺	⊺	⊺
⊻	⊻		⊻	⊻	⊻
⊼	⊼		⊼	⊼	⊼
⊽	⊽		⊽	⊽	⊽
⊾	⊾		⊾	⊾	⊾
⊿	⊿		⊿	⊿	⊿
⊀	⊀		⊀	⊀	⊀
⊁	⊁		⊁	⊁	⊁
⊂	⊂		⊂	⊂	⊂
⊃	⊃		⊃	⊃	⊃
⊄	⊄		⊄	⊄	⊄
⊅	⊅		⊅	⊅	⊅
⊆	⊆		⊆	⊆	⊆
⊇	⊇		⊇	⊇	⊇
⊈	⊈		⊈	⊈	⊈
⊉	⊉		⊉	⊉	⊉
⊊	⊊		⊊	⊊	⊊
⊋	⊋		⊋	⊋	⊋
⊌	⊌		⊌	⊌	⊌
⊍	⊍		⊍	⊍	⊍
⊎	⊎		⊎	⊎	⊎
⊏	⊏		⊏	⊏	⊏
⊐	⊐		⊐	⊐	⊐
⊑	⊑		⊑	⊑	⊑
⊒	⊒		⊒	⊒	⊒
⊓	⊓		⊓	⊓	⊓
⊔	⊔		⊔	⊔	⊔
⊕	⊕		⊕	⊕	⊕
⊖	⊖		⊖	⊖	⊖
⊗	⊗		⊗	⊗</	



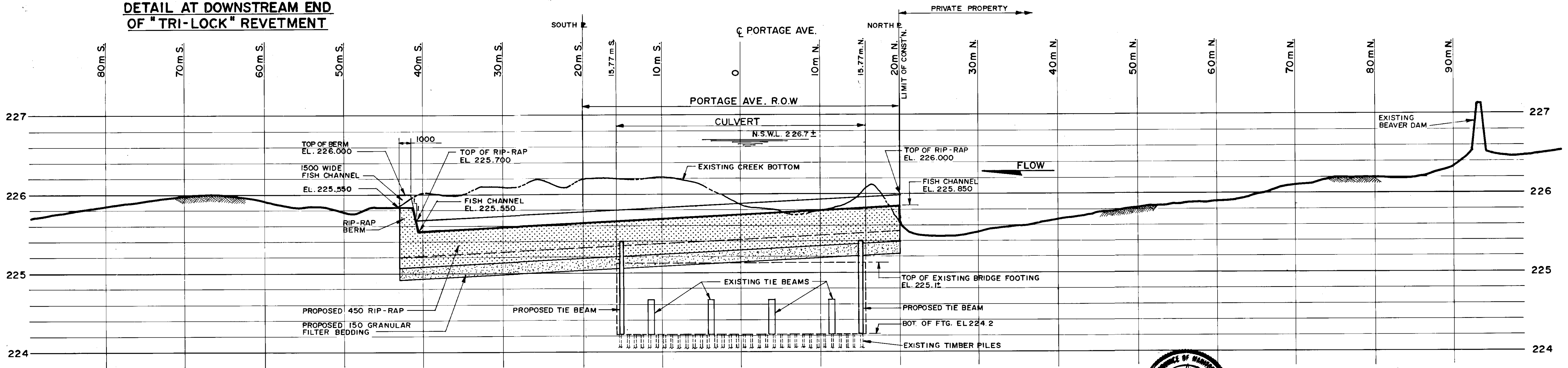
**SECTION ALONG NORTH PROPERTY LINE OF PORTAGE AVENUE (LOOKING SOUTH)**  
SCALE 1: 250



**SECTION ALONG SOUTH PROPERTY LINE OF PORTAGE AVENUE (LOOKING NORTH)**  
SCALE 1: 250



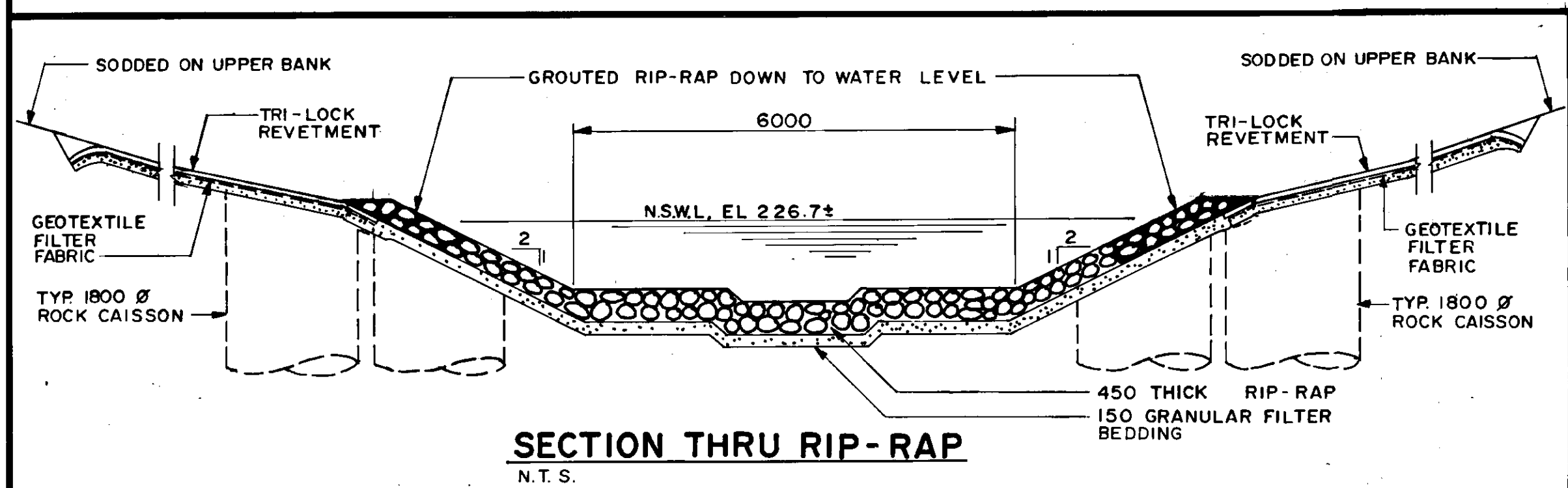
**DETAIL AT DOWNSTREAM END OF "TRI-LOCK" REVETMENT**



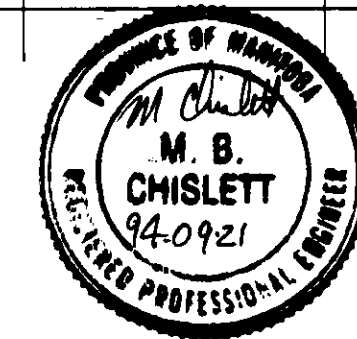
**PROFILE OF CREEK BOTTOM (LOOKING WEST)**

SCALE: HOR. 1: 250  
VERT. 1: 25

NOTE: UTILITY PIPES UNDER CREEK BED NOT SHOWN FOR CLARITY



**SECTION THRU RIP-RAP**  
N.T.S.



**RECORD DRAWING**  
APPROVED BY: *[Signature]* DATE: 20/20/96

NO.	REVISIONS	DATE	BY

**DILLON**  
Consulting Engineers - Planners  
Environmental Scientists

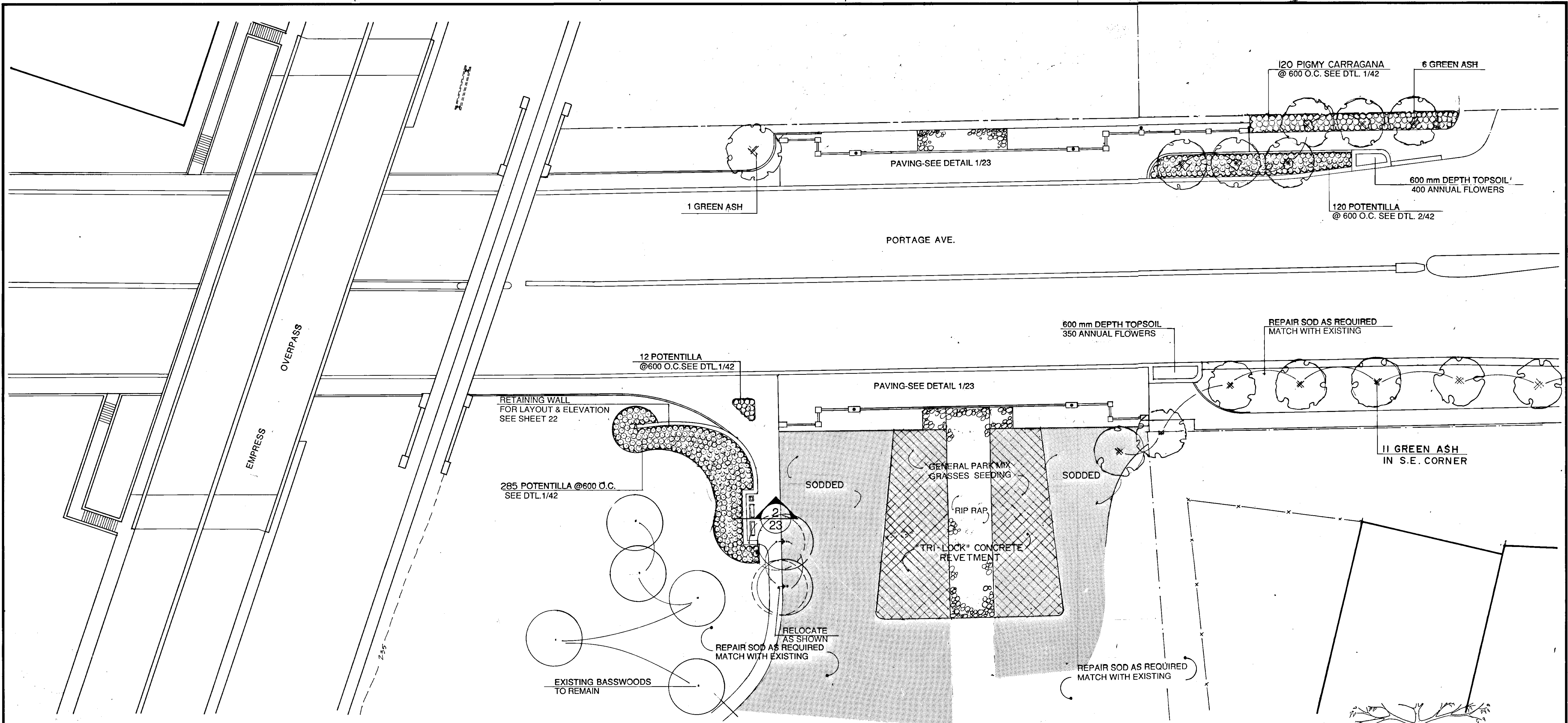
DESIGNED BY: S.S.R. CHECKED BY: S.S.R./M.B.C.  
DRAWN BY: W.P.S. APPROVED BY: *[Signature]*  
HOR. SCALE: AS SHOWN  
VERTICAL: AS SHOWN  
DATE: SEPT 1994

ENGINEER: *[Signature]*  
S.S. RIMAL  
CONSULTANT DRAWING NO. 92-3813-02-08

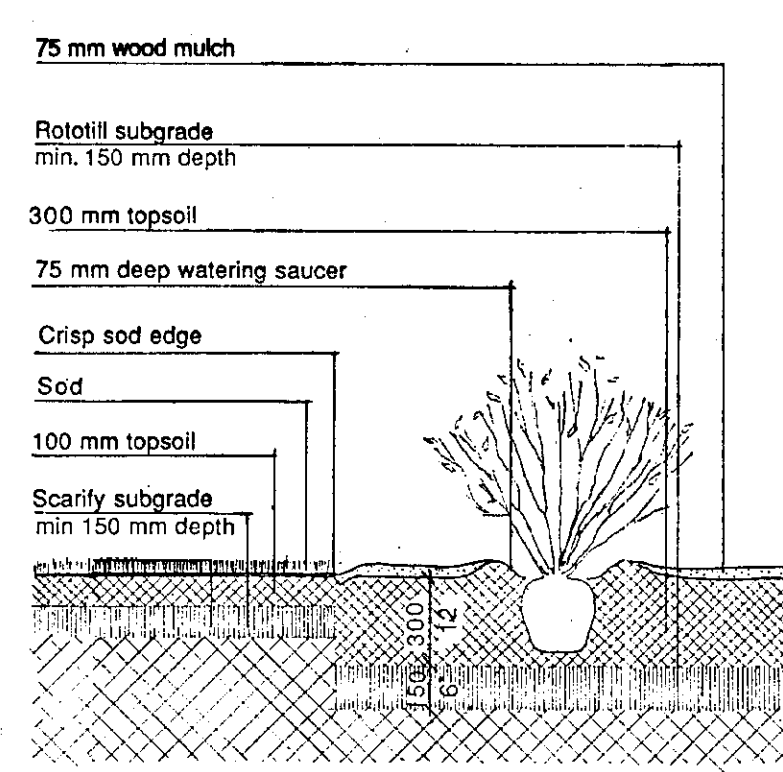
**THE CITY OF WINNIPEG**  
WORKS AND OPERATIONS DIVISION  
STREETS AND TRANSPORTATION DEPARTMENT

**PORTAGE AVE. CULVERT & UNDERPASS**  
OMAND'S CREEK CULVERT REHABILITATION,  
UNDERPASS ROADWAY RESURFACING  
AND RELATED WORKS

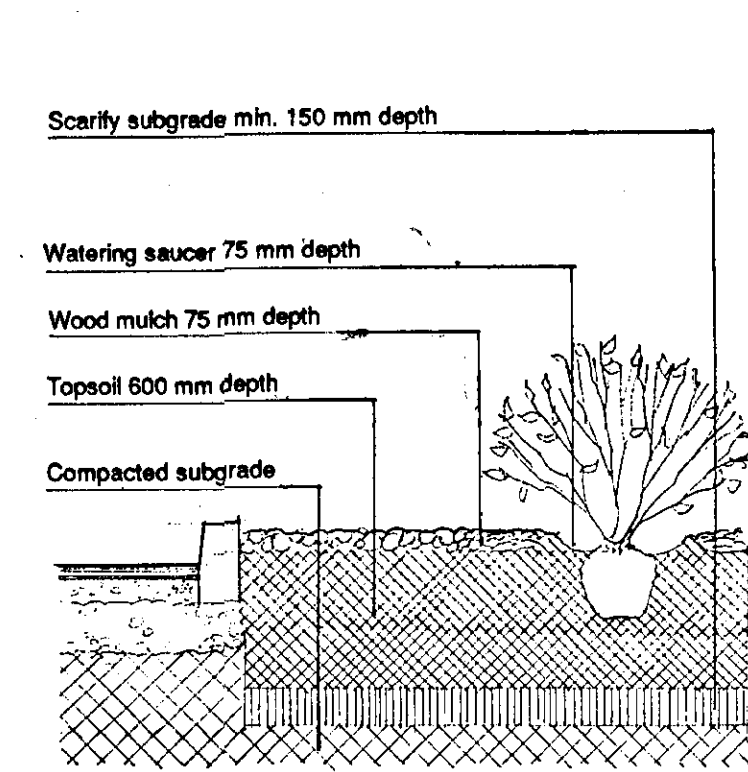
CITY DRAWING NUMBER: U200-95-08  
SHEET OF  
OMAND'S CREEK  
CROSS SECTIONS & PROFILE  
**B-5983-8**



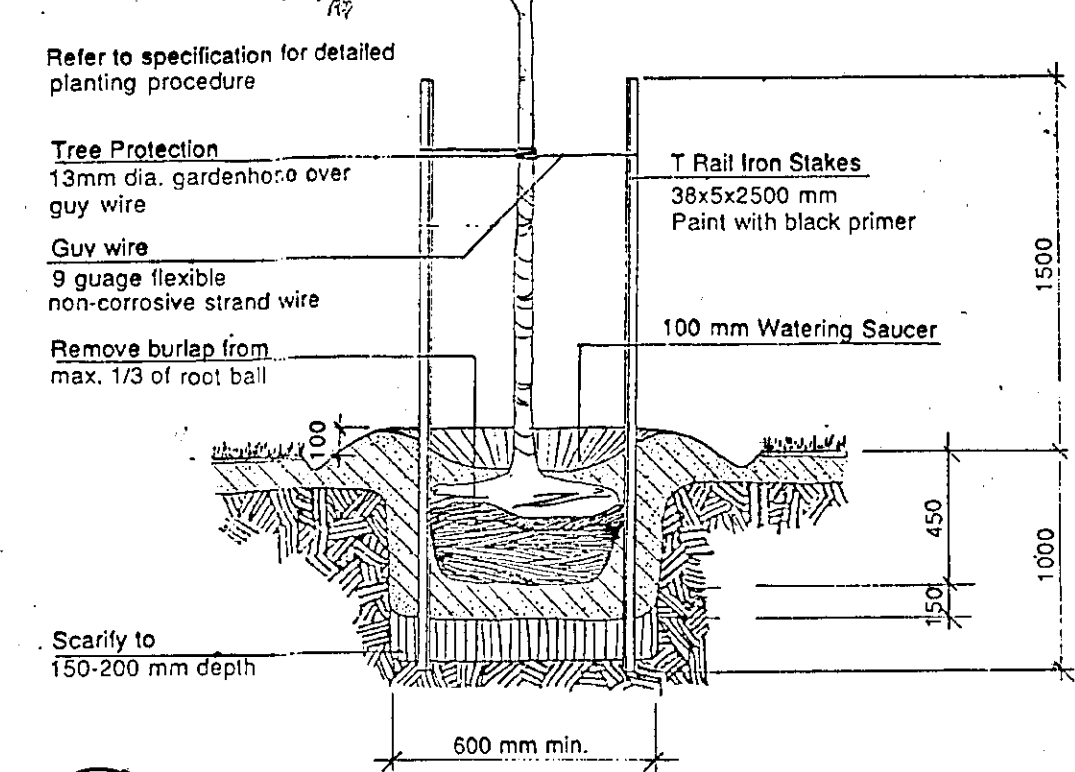
PLAN



1 SHRUB PLANTING DETAIL NOT TO SCALE



2 SHRUB PLANTING DETAIL NOT TO SCALE

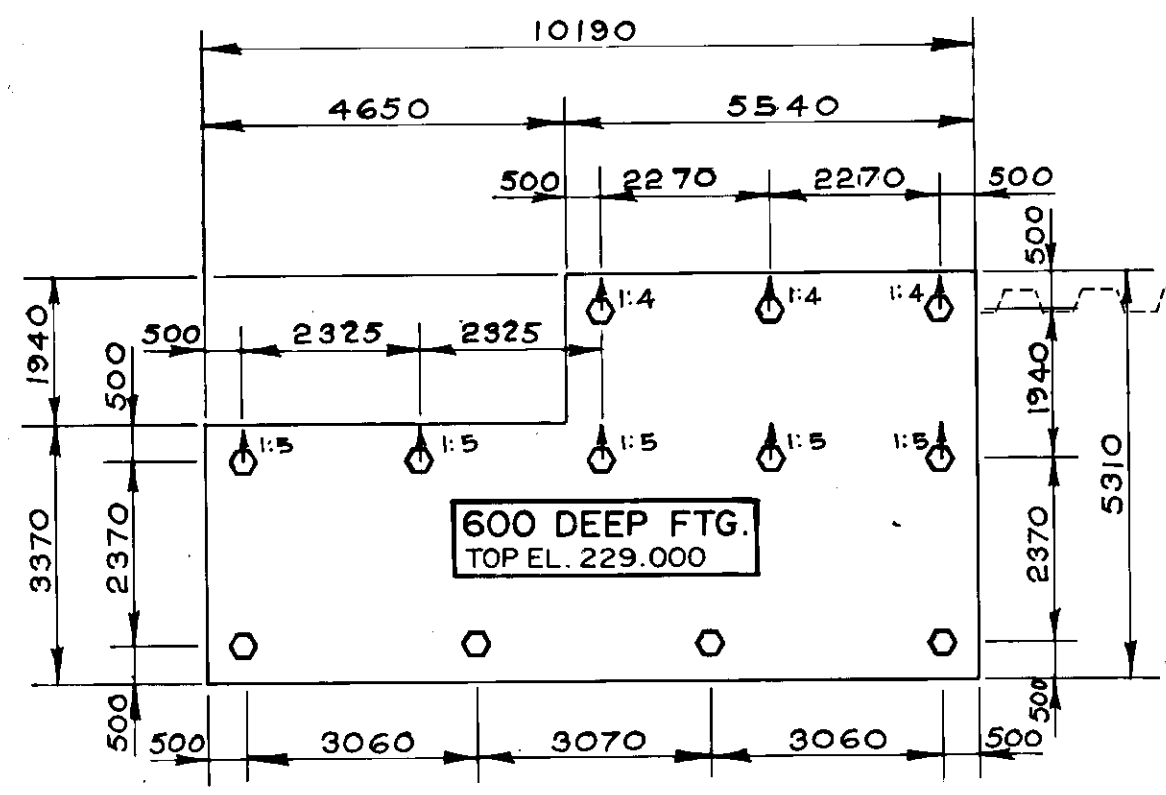


3 DECIDUOUS TREE PLANTING DETAIL NOT TO SCALE

**RECORD DRAWING**  
 APPROVED BY: *[Signature]* DATE: 04/20/96

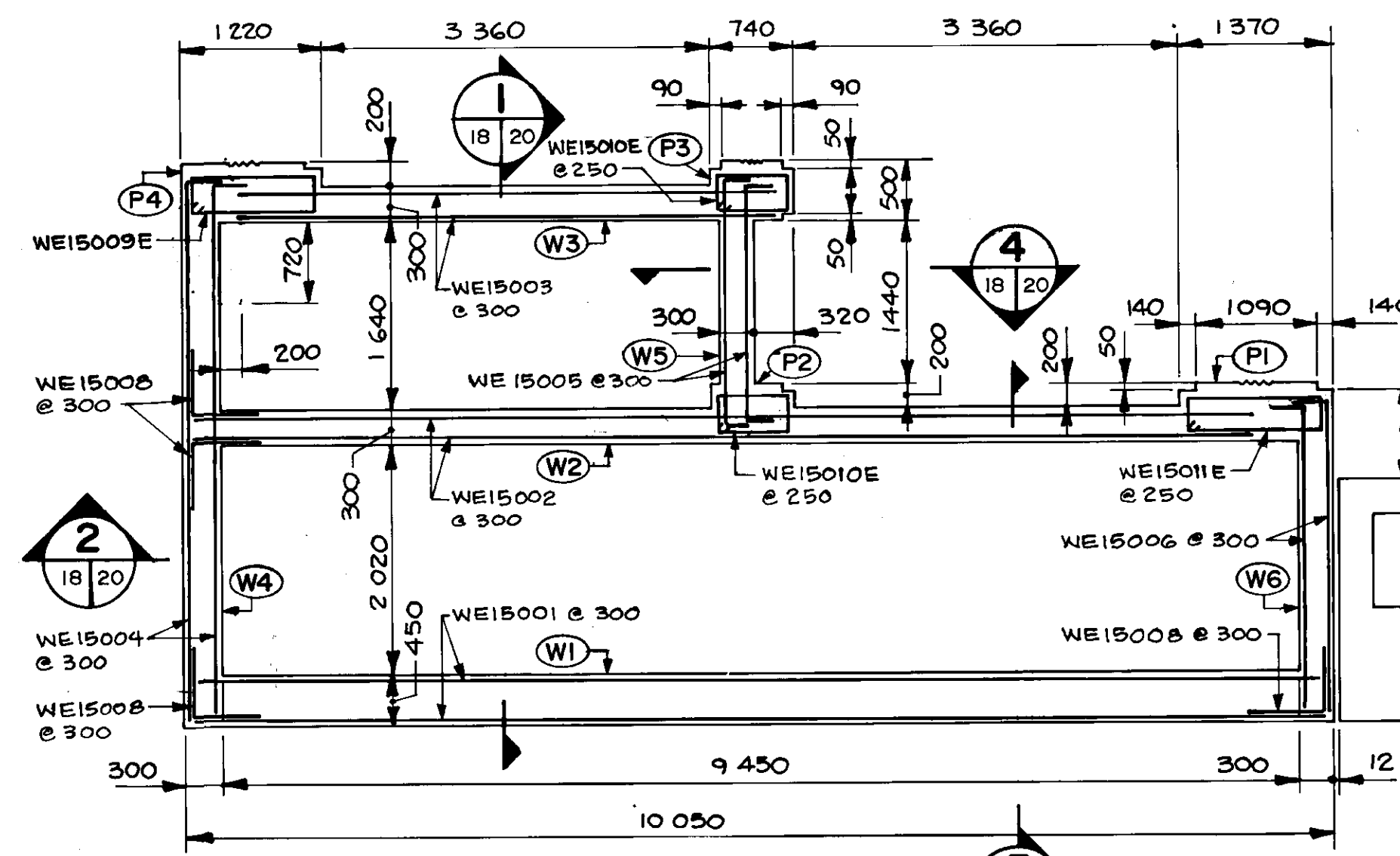
B.M. ELEV.		Hilderman Witty Crosby & Hanna Associates Landscape Architects & Planners	DILLON Consulting Engineers, Planners & Environmental Scientists
DESIGNED BY	G.H.	CHECKED BY	G.H. / N.J.
DRAWN BY	N.J.	APPROVED BY	<i>[Signature]</i>
HOR. SCALE:	1:250	AUTHORITATIVE DATE	04/12/96
VERTICAL		ACCEPTED BY	<i>[Signature]</i> DATE 04/12/96
NO. REVISIONS		DATE	SEPT. 1994

ENGINEER'S SEAL  
  
**THE CITY OF WINNIPEG**  
 WORKS AND OPERATIONS DIVISION  
 STREETS AND TRANSPORTATION DEPARTMENT  
**PORTAGE AVE. CULVERT & UNDERPASS**  
 OMAND'S CREEK CULVERT REHABILITATION, UNDERPASS, ROADWAY RESURFACING AND RELATED WORKS  
 LANDSCAPING & PLANTING  
 CITY DRAWING NUMBER U200-95-43  
 SHEET OF  
**B-5983-39**



**FOOTING AND PILING AT N.E. & N.W. CORNERS**

1:100  
2 LOCATIONS THUS  
12 - 300 HEX. PRECAST CONC. PILES REQ'D AT EA. LOCATION  
PILES DRIVEN TO REFUSAL IN GLACIAL TILL  
APPROX. TILL EL. 222.0

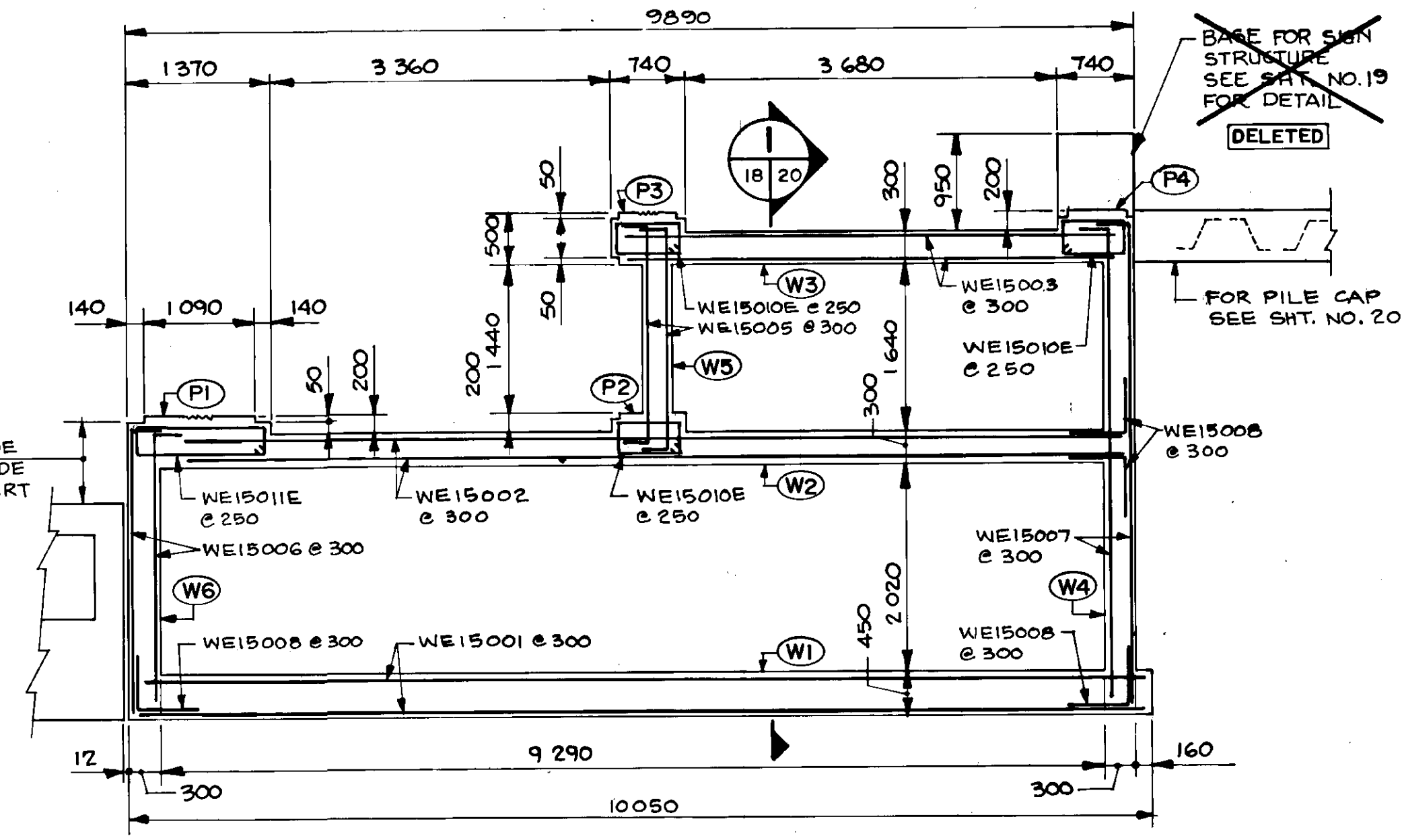


**N.W., S.E. & S.W. CORNERS**

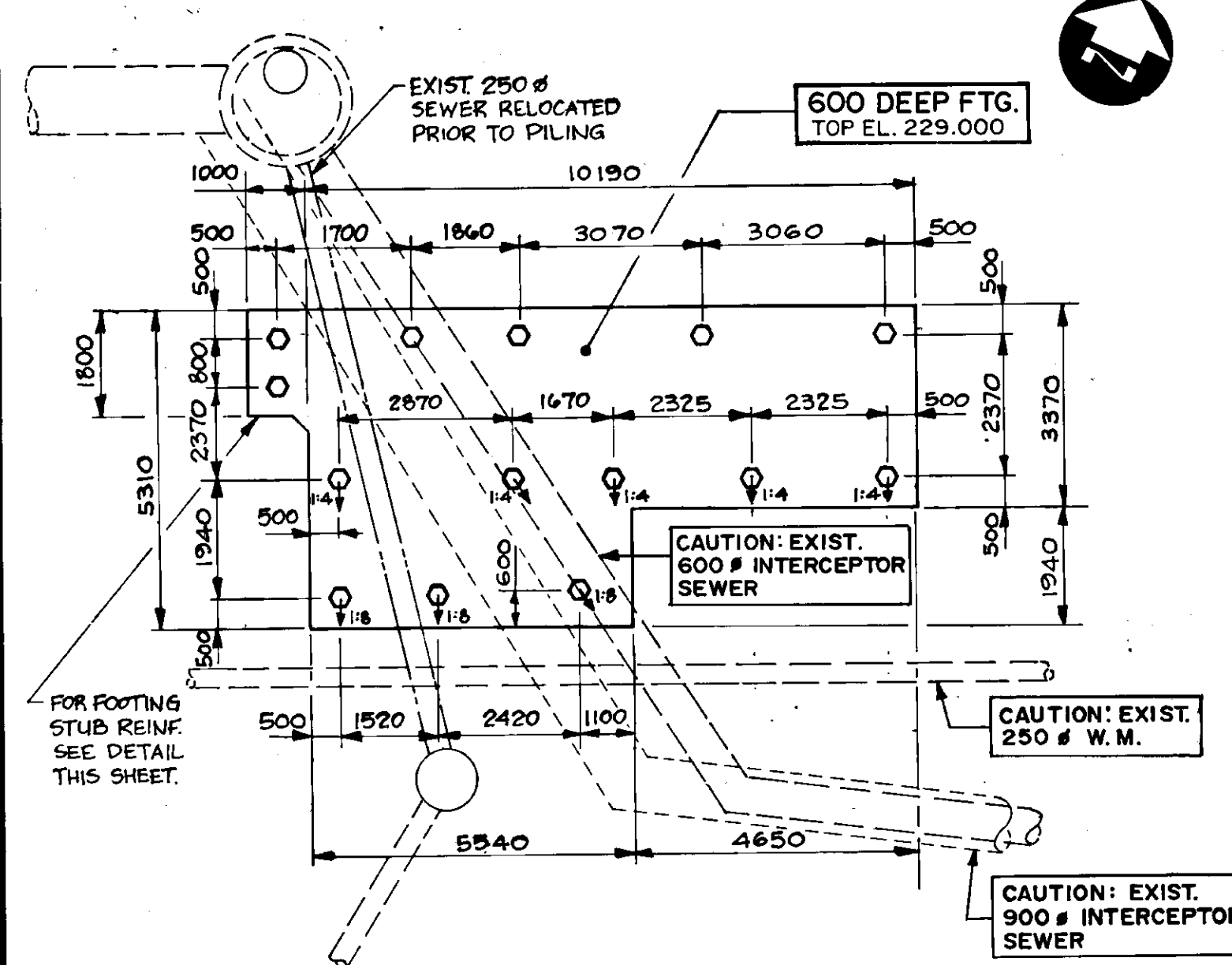
NOTE: FOR S.E. CORNER PLAN  
MODIFICATION SEE  
DWG. NO. 10

**CONCRETE WALL PLANS**

1:50

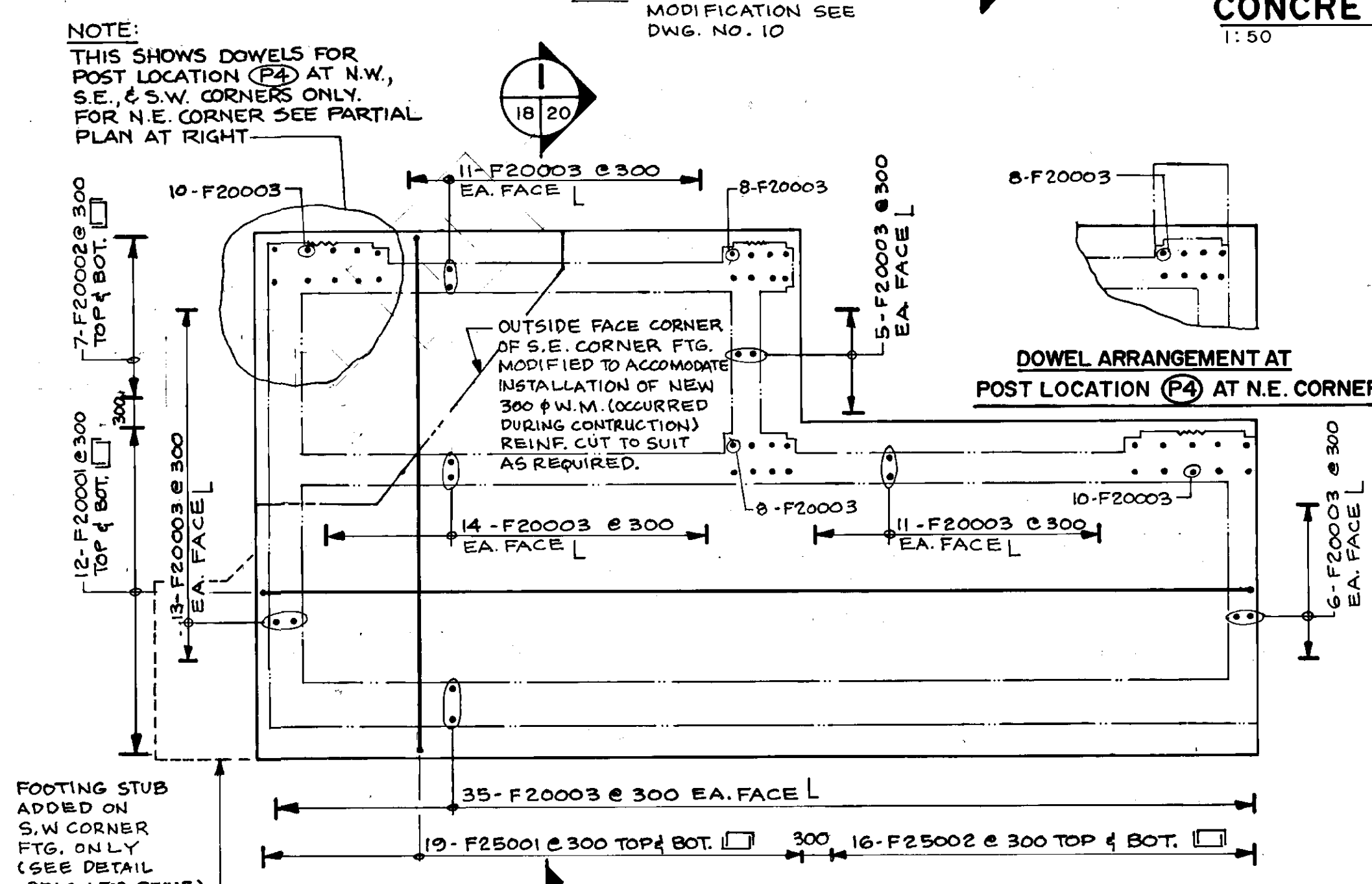


**NORTHEAST CORNER**



**FOOTING AND PILING AT SOUTHWEST CORNER**

1:100  
1 LOCATION THUS  
14 - 300 HEX. PRECAST CONC. PILES REQ'D.  
PILES DRIVEN TO REFUSAL IN GLACIAL TILL  
APPROX. TILL EL. 219.5



**TYPICAL FOOTING REINFORCEMENT**

1:50  
NOTE: ALL VERTICAL REBARS SPACING OF WALLS & POSTS  
MATCH F20003 DOWELS SPACING.

**\* LOC'N = LOCATION**

NORTHEAST CORNER							
WALL REINFORCEMENT			POST REINFORCEMENT				
LOC'N	HORIZONTAL	VERTICAL	LOC'N	TYPE	VERTICAL	TIES	DWLS TO RAIL
W1	10-WE15001 E.F.	35-WE20001 E.F.	P1	B	10-WE20002E	18-WE15011E	4-WE10001E
W2	10-WE15002 E.F.	25-WE15012 E.F.	P2	C	8-WE20002E	18-WE15010E	8-WE10001E
W3	10-WE15003 E.F.	11-WE15012 E.F.	P3	C	8-WE20002E	19-WE15010E	8-WE10001E
W4	10-WE15007 E.F.	13-WE15012 E.F.	P4	C	8-WE20002E	19-WE15010E	8-WE10001E
W5	10-WE15008 E.F.	6-WE15012 E.F.					
W6	10-WE15006 E.F.	6-WE15012 E.F.					
40-WE15008 CORNER BARS							

NOTE:  
FOR POST TYPES SEE SHEET NO. 19  
FOR PILASTERS AT POST LOCATION (P4) SEE DWG. NO. 9

NORTHWEST CORNER							
WALL REINFORCEMENT			POST REINFORCEMENT				
LOC'N	HORIZONTAL	VERTICAL	LOC'N	TYPE	VERTICAL	TIES	DWLS TO RAIL
W1	6-WE15001 E.F.	35-WE20003 E.F.	P1	B	10-WE20004E	13-WE15011E	4-WE10001E
W2	6-WE15002 E.F.	25-WE15013 E.F.	P2	C	8-WE20004E	11-WE15010E	8-WE10001E
W3	6-WE15003 E.F.	11-WE15013 E.F.	P3	C	8-WE20004E	11-WE15010E	8-WE10001E
W4	5-WE15004 E.F.	13-WE15013 E.F.	P4	A	10-WE20004E	11-WE15009E	4-WE10001E
W5	6-WE15005 E.F.	5-WE15013 E.F.					
W6	6-WE15006 E.F.	6-WE15013 E.F.					
24-WE15008 CORNER BARS							

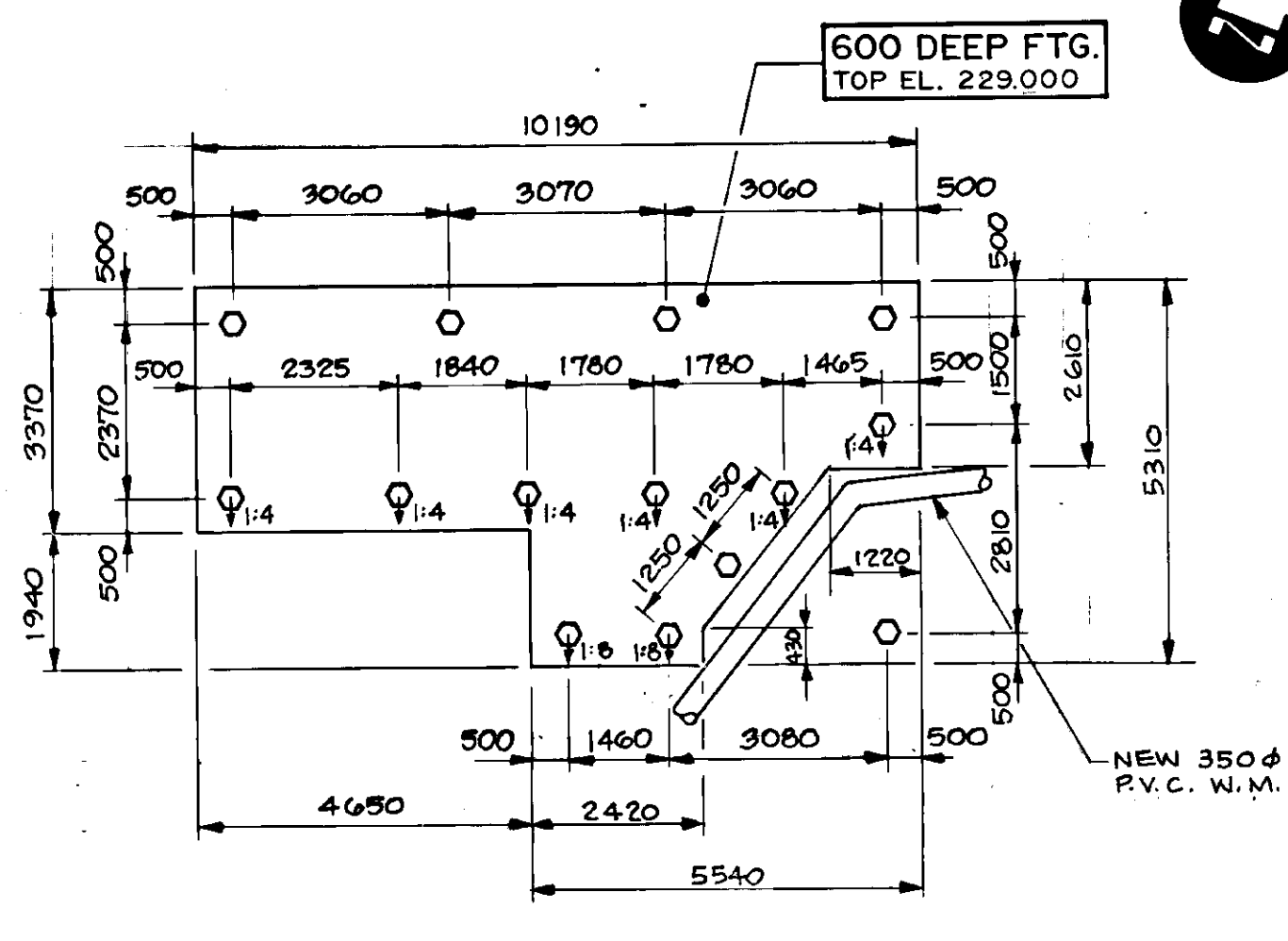
NOTE:  
FOR POST TYPE SEE SHEET NO. 19

SOUTHEAST CORNER							
WALL REINFORCEMENT			POST REINFORCEMENT				
LOC'N	HORIZONTAL	VERTICAL	LOC'N	TYPE	VERTICAL	TIES	DWLS TO RAIL
W1	10-WE15001 E.F.	35-WE20001 E.F.	P1	B	10-WE20002E	18-WE15011E	4-WE10001E
W2	10-WE15002 E.F.	25-WE15012 E.F.	P2	C	8-WE20002E	18-WE15010E	8-WE10001E
W3	10-WE15003 E.F.	11-WE15012 E.F.	P3	C	8-WE20002E	19-WE15010E	8-WE10001E
W4	10-WE15004 E.F.	13-WE15012 E.F.	P4	A	10-WE20002E	19-WE15009E	4-WE10001E
W5	10-WE15005 E.F.	5-WE15012 E.F.					
W6	10-WE15006 E.F.	6-WE15012 E.F.					
40-WE15008 CORNER BARS							

NOTE:  
FOR POST TYPE SEE SHEET NO. 19

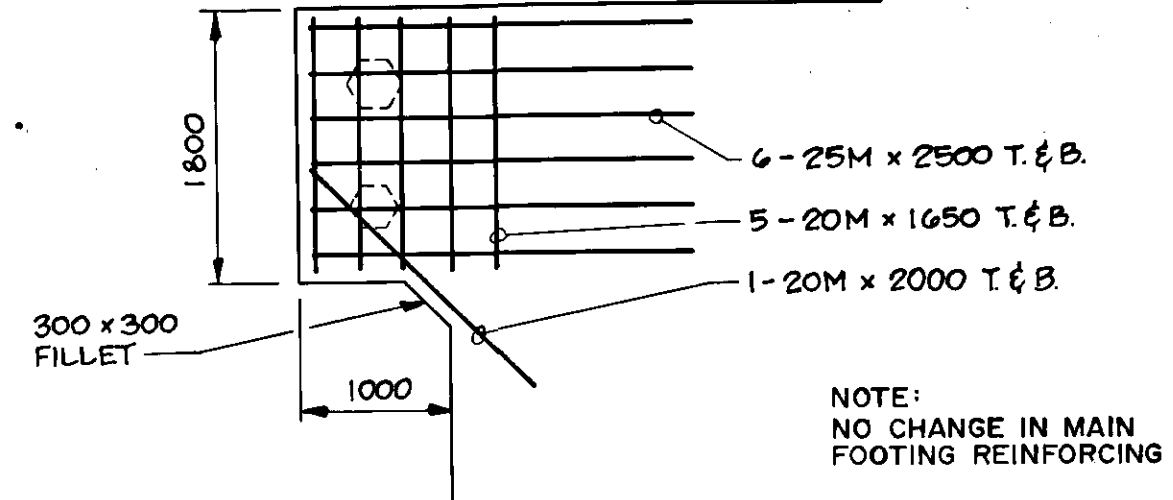
SOUTHWEST CORNER							
WALL REINFORCEMENT			POST REINFORCEMENT				
LOC'N	HORIZONTAL	VERTICAL	LOC'N	TYPE	VERTICAL	TIES	DWLS TO RAIL
W1	6-WE15001 E.F.	35-WE20003 E.F.	P1	B	10-WE20004E	13-WE15011E	4-WE10001E
W2	6-WE15002 E.F.	25-WE15013 E.F.	P2	C	8-WE20004E	11-WE15010E	8-WE10001E
W3	6-WE15003 E.F.	11-WE15013 E.F.	P3	C	8-WE20004E	11-WE15010E	8-WE10001E
W4	5-WE15004 E.F.	13-WE15013 E.F.	P4	C	10-WE20004E	11-WE15009E	4-WE10001E
W5	6-WE15005 E.F.	5-WE15013 E.F.					
W6	6-WE15006 E.F.	6-WE15013 E.F.					
24-WE15008 CORNER BARS							

NOTE:  
FOR POST TYPES SEE SHEET NO. 19



**FOOTING AND PILING AT SOUTHEAST CORNER**

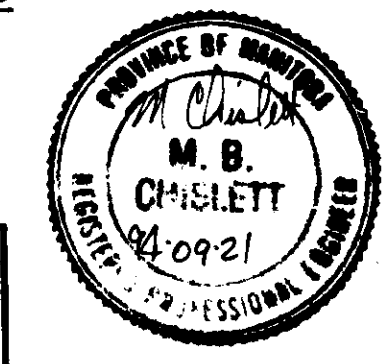
1:100  
1 LOCATION THUS  
14 - 300 HEX. PRECAST CONC. PILES REQ'D.  
PILES DRIVEN TO REFUSAL IN GLACIAL TILL  
APPROX. TILL EL. 219.5



**FOOTING STUB REINFORCING  
DETAIL AT S.W. FOOTING**

1:50

**RECORD DRAWING**  
APPROVED BY: [Signature] DATE: 02/22/96



**DILLON**  
Consulting Engineers - Planners  
Environmental Scientists

DESIGNED BY: S.S.R. CHECKED BY: S.S.R.  
DRAWN BY: N.B.G. APPROVED BY: [Signature]

HOR. SCALE: AS NOTED  
VERTICAL: [Scale]

NO. REVISIONS: [Table]  
DATE BY: [Table]

DATE: SEPT. 1994

CONSULTANT DRAWING NO. 92-3813-02-18

**THE CITY OF WINNIPEG**  
WORKS AND OPERATIONS DIVISION  
STREETS AND TRANSPORTATION DEPARTMENT

**PORTAGE AVE. CULVERT & UNDERPASS**  
OMAND'S CREEK CULVERT REHABILITATION,  
UNDERPASS, ROADWAY RESURFACING  
AND RELATED WORKS

CITY DRAWING NUMBER: U200-95-18  
SHEET OF: [ ]

WINGWALL EXTENSIONS  
PILING LAYOUTS & FOUNDATION PLANS

**B-5983-18**