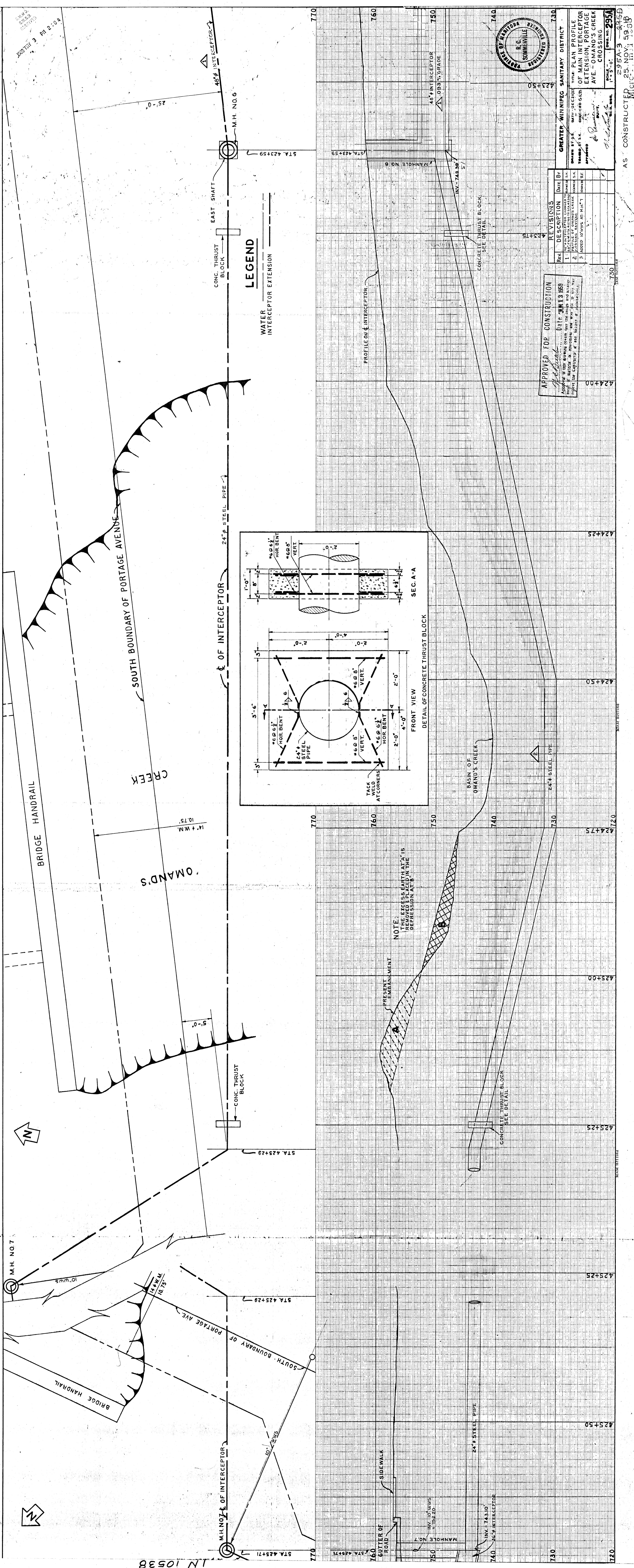
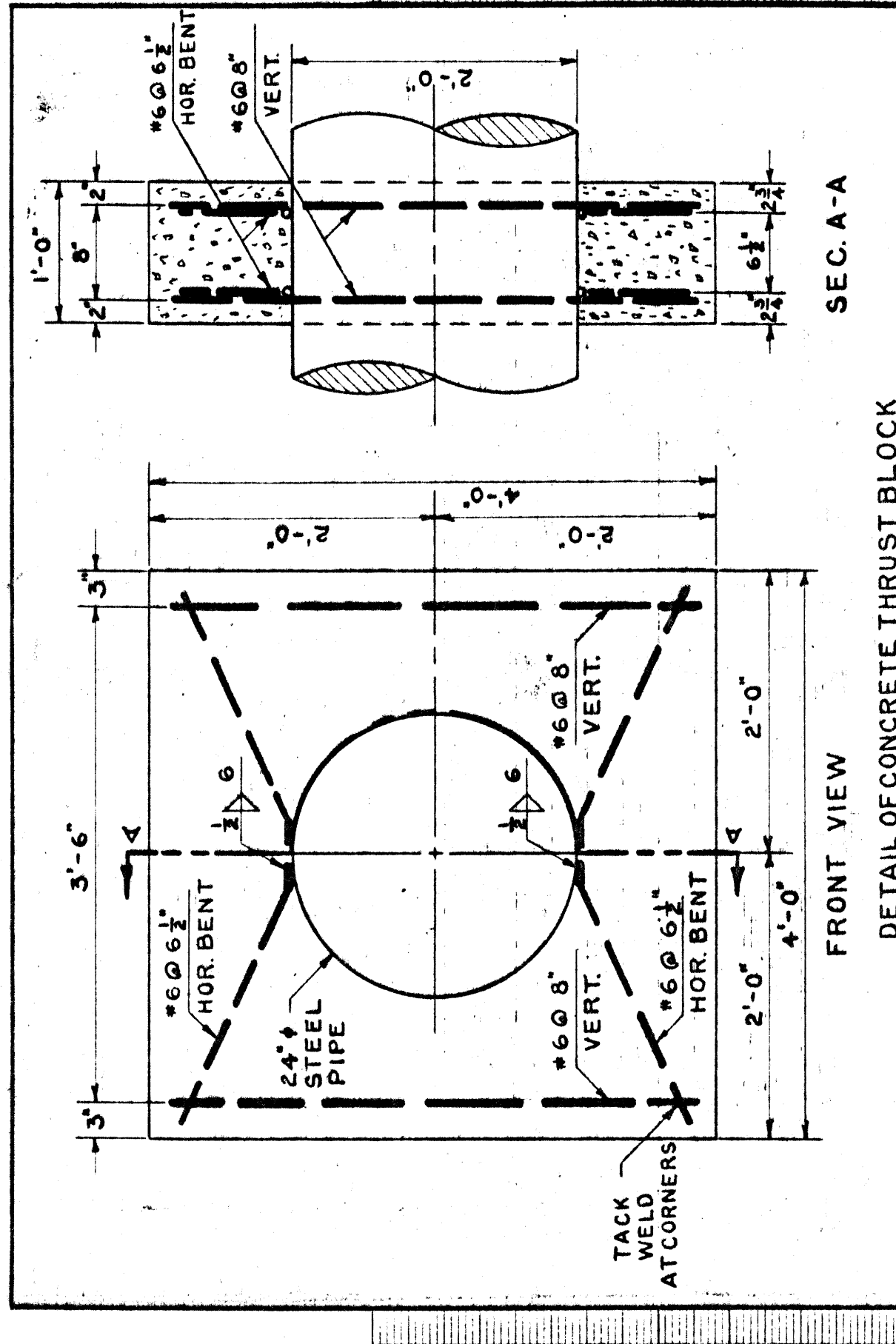


APPENDIX B – ADDITIONAL INFORMATION

1. Drawing – Plan Profile Main Interceptor Extension, Portage Avenue – Omand’s Creek
2. Drawing - U200-95-06 General Site Plan
3. Drawing - U200-95-06A Creek Channel Cross Sections - South of Culvert
4. Drawing - U200-95-07 Underground Utility Relocations and Related Works
5. Drawing - U200-95-08 Omand’s Creek - Cross Sections and Profile
6. Drawing - U200-95-43 Landscaping and Plan

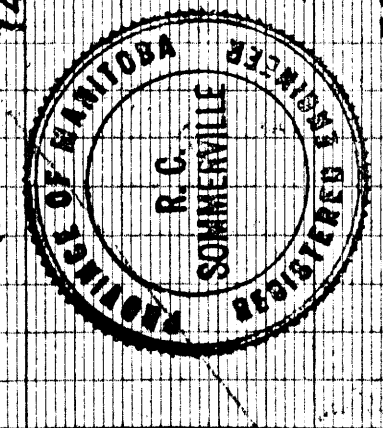


LEGEND
 WATER INTERCEPTOR EXTENSION
 CONC. THRUST BLOCK



APPROVED FOR CONSTRUCTION
 Date: JAMES 1950
 Approved by: [Signature]
 Checked by: [Signature]
 Note: This drawing covers only the work shown. It is not to be construed as approval of any other work shown or not shown.

REV.	DESCRIPTION	DATE	BY
1	SEE INTERCEPTOR CHANGED TO 48\"/>		
2	ADDED 10\"/>		



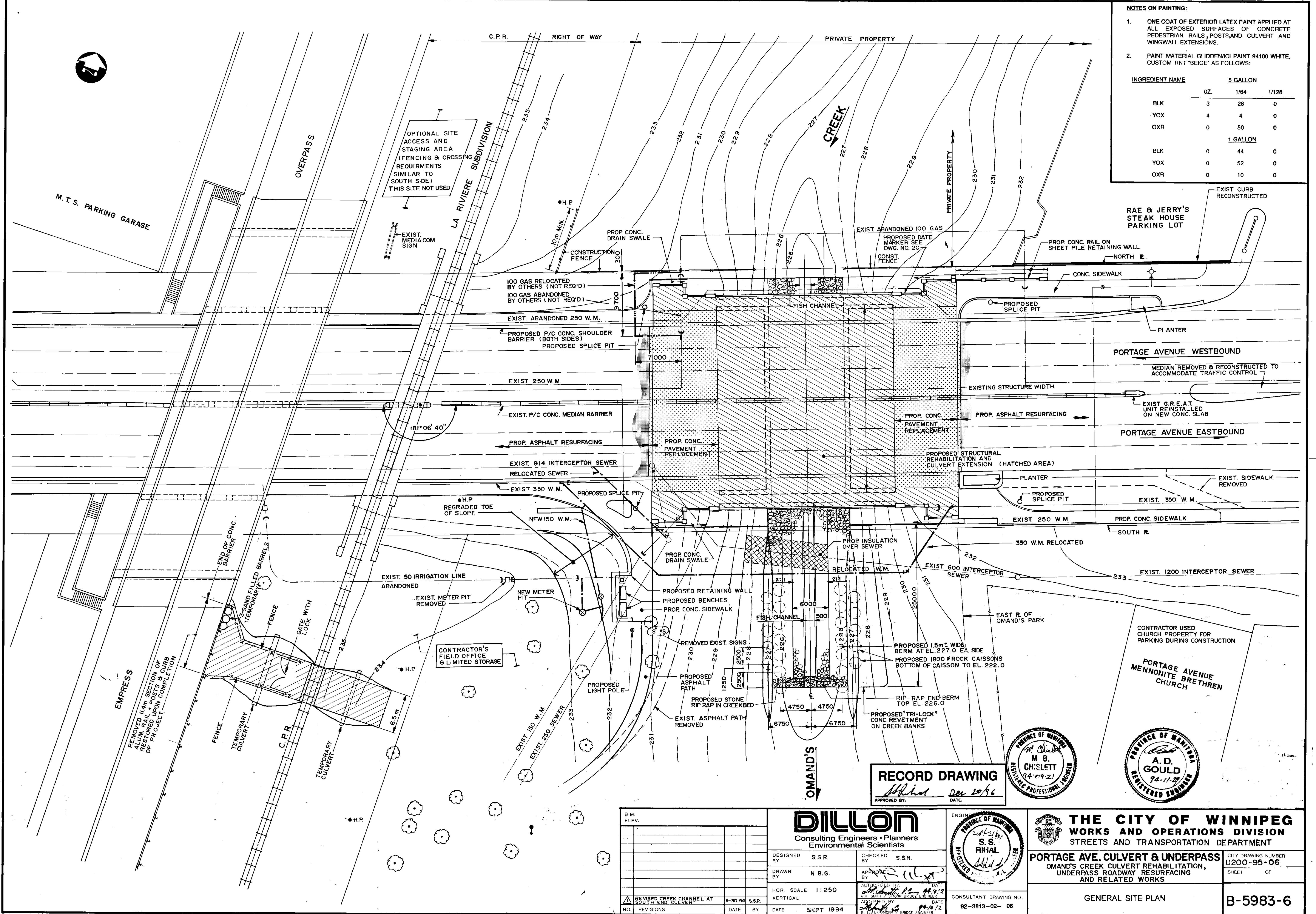
AS CONSTRUCTED 295A-3 295D
 25 NOV. 59
 MATCH

DWG 295A REV 3 DETAILS 295A-3 FM 10081 IN 10538

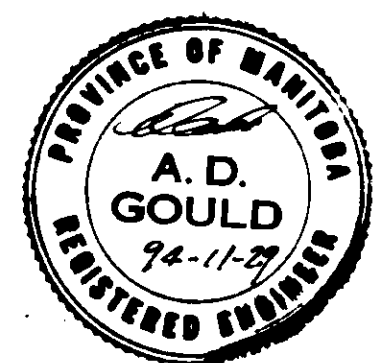
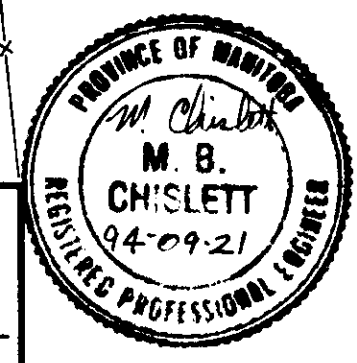
NOTES ON PAINTING:

- ONE COAT OF EXTERIOR LATEX PAINT APPLIED AT ALL EXPOSED SURFACES OF CONCRETE PEDESTRIAN RAILS, POSTS, AND CULVERT AND WINGWALL EXTENSIONS.
- PAINT MATERIAL: GLIDDENICI PAINT 94100 WHITE, CUSTOM TINT "BEIGE" AS FOLLOWS:

INGREDIENT NAME	5 GALLON		
	OZ.	1/64	1/128
BLK	3	28	0
YOX	4	4	0
OXR	0	50	0
1 GALLON			
BLK	0	44	0
YOX	0	52	0
OXR	0	10	0



RECORD DRAWING
 Approved by: [Signature] Date: Dec 20/96



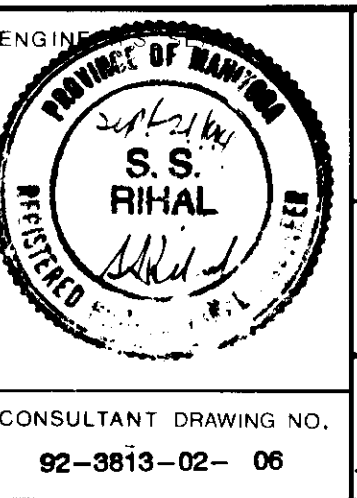
NO.	REVISIONS	DATE	BY
1	REVISED CREEK CHANNEL AT SOUTH END CULVERT	11-30-94	S.S.R.

DILLON
 Consulting Engineers • Planners
 Environmental Scientists

DESIGNED BY: S.S.R. CHECKED BY: S.S.R.
 DRAWN BY: N.B.G. APPROVED BY: [Signature]

HOR SCALE: 1:250
 VERTICAL: [Signature]

DATE: SEPT 1994



THE CITY OF WINNIPEG
 WORKS AND OPERATIONS DIVISION
 STREETS AND TRANSPORTATION DEPARTMENT

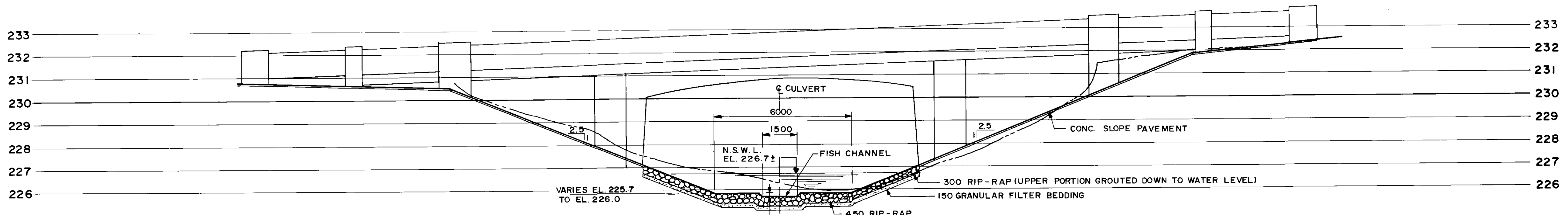
PORTAGE AVE. CULVERT & UNDERPASS
 OMAND'S CREEK CULVERT REHABILITATION,
 UNDERPASS ROADWAY RESURFACING
 AND RELATED WORKS

CITY DRAWING NUMBER: U200-95-06
 SHEET OF: []

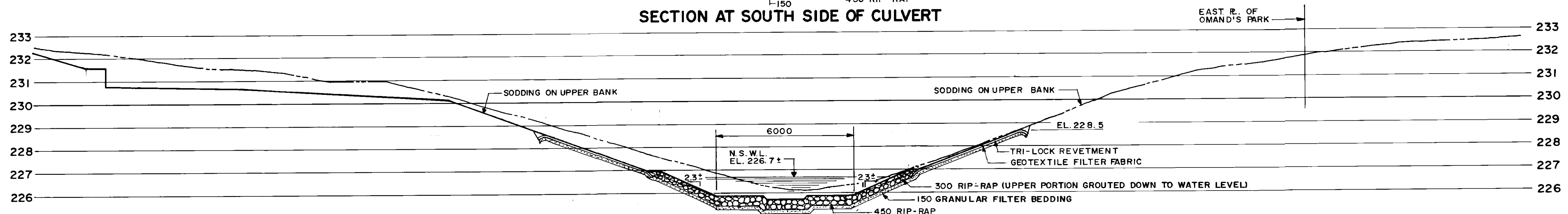
CONSULTANT DRAWING NO.: 92-3813-02-06

GENERAL SITE PLAN

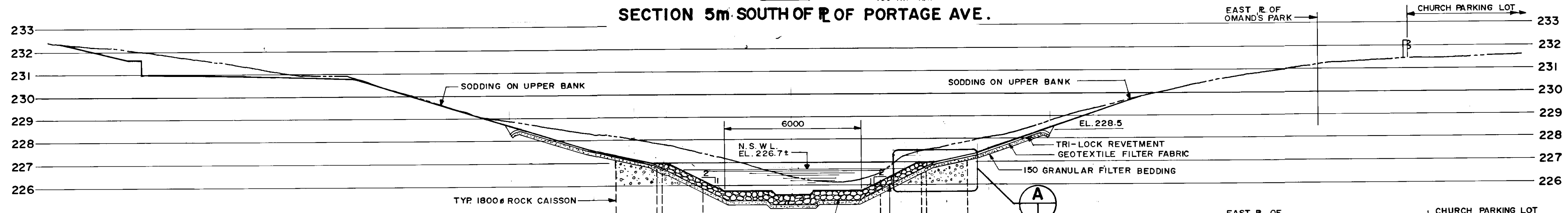
B-5983-6



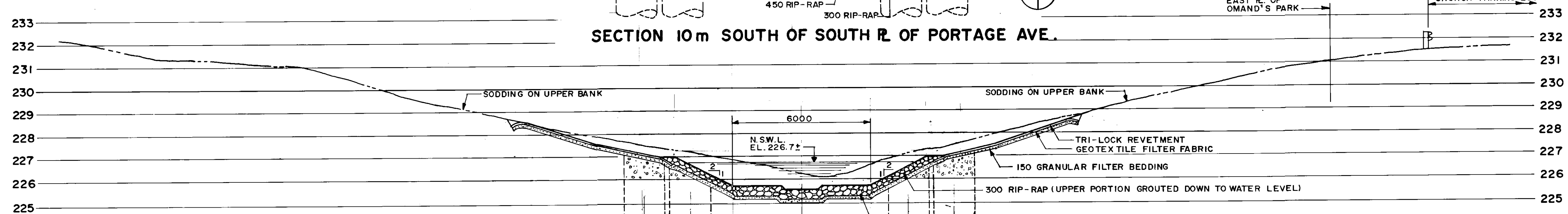
SECTION AT SOUTH SIDE OF CULVERT



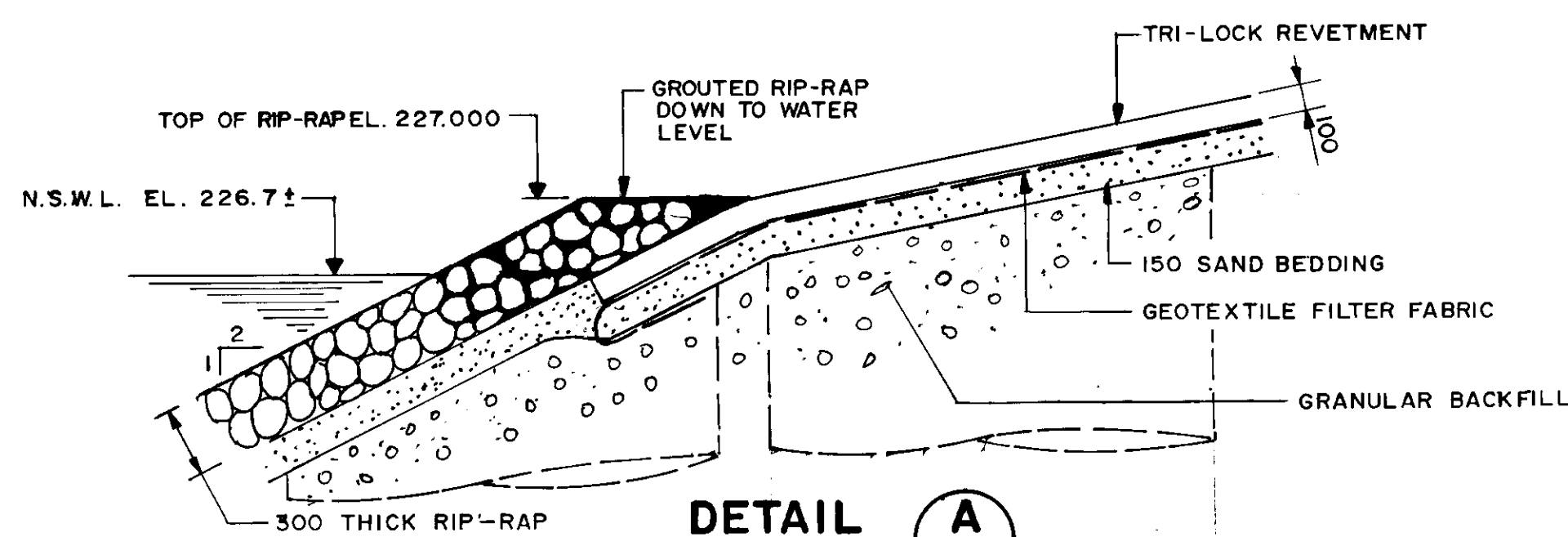
SECTION 5m SOUTH OF R. OF PORTAGE AVE.



SECTION 10m SOUTH OF SOUTH R. OF PORTAGE AVE.



SECTION 20m SOUTH OF SOUTH R. OF PORTAGE AVE.



DETAIL A
1:25

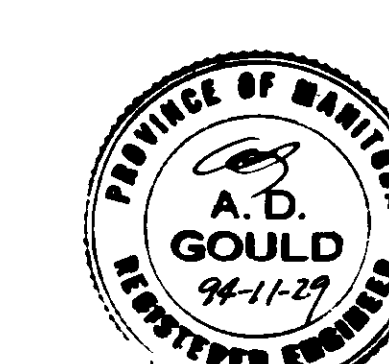
LOCATION APPROVED
UNDERGROUND STRUCTURES

DESIGNED BY: W.P.S./SSR.
DRAWN BY: W.P.S./NBG.
HOR. SCALE: 1:100 OR
VERTICAL: NOTED
DATE: NOV. 1994

NO.	REVISIONS	DATE	BY

DILLON
Consulting Engineers • Planners
Environmental Scientists

DESIGNED BY: W.P.S./SSR.
CHECKED BY: S.SR.
DRAWN BY: W.P.S./NBG.
APPROVED BY: [Signature]
DATE: 94/11/27
AUTHORISED BY: [Signature]
DATE: 94/11/27
CONSULTANT DRAWING NO.: 92-3813-02-06A



PROVINCE OF MANITOBA
Nov 29/94
S.S. RIHAL
REGISTERED PROFESSIONAL ENGINEER
CONSULTANT DRAWING NO.: 92-3813-02-06A

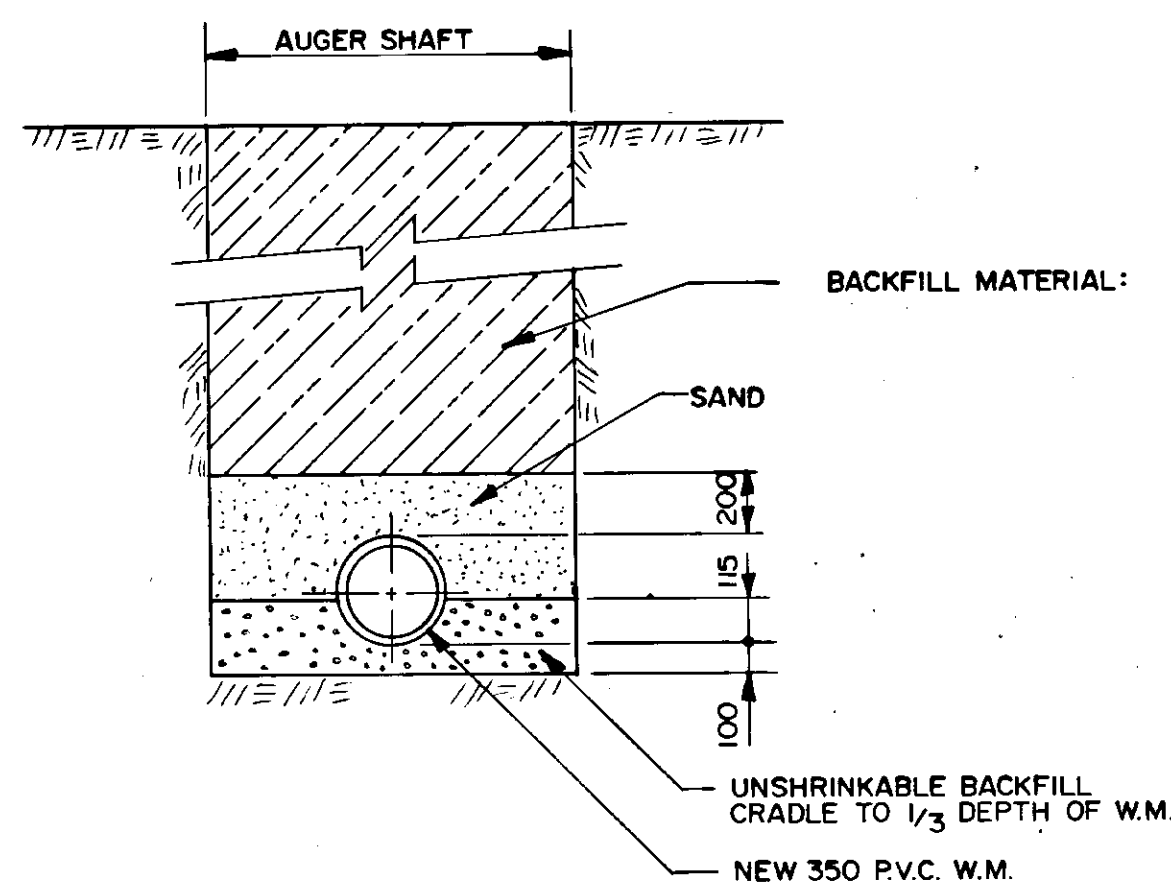
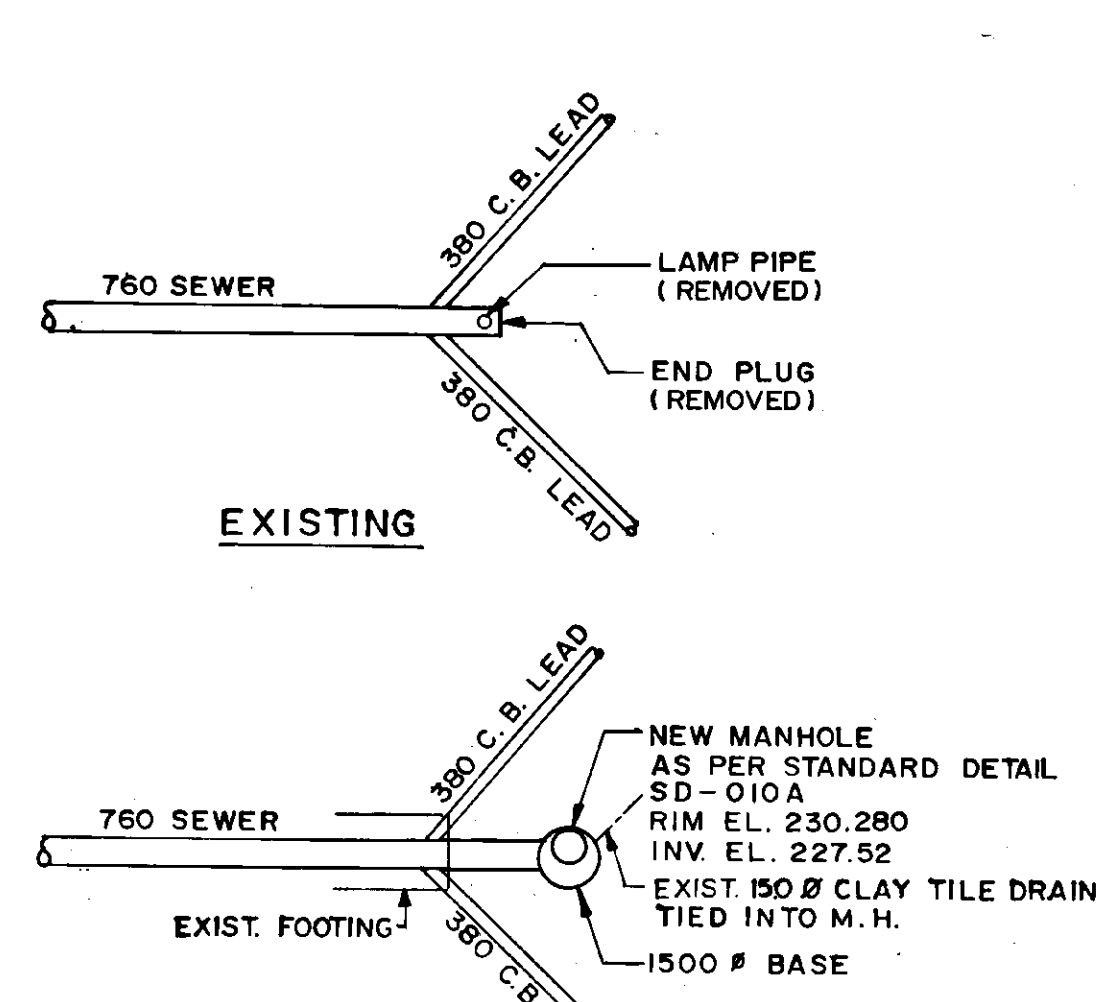
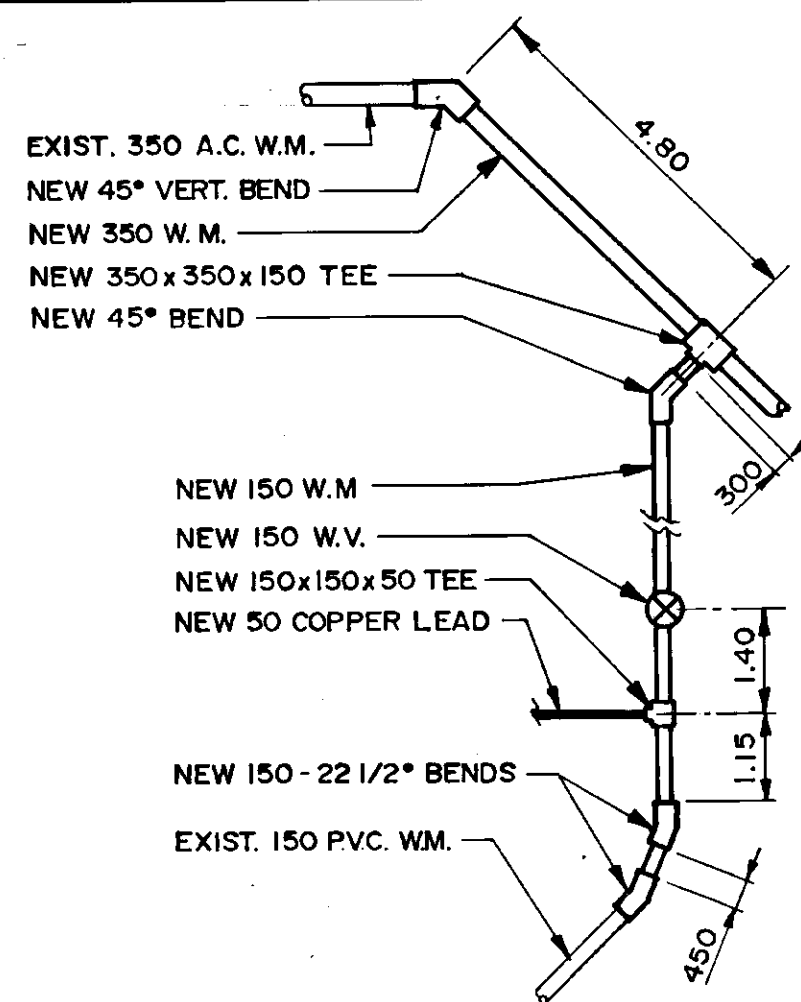
THE CITY OF WINNIPEG
WORKS AND OPERATIONS DIVISION
STREETS AND TRANSPORTATION DEPARTMENT

PORTAGE AVE. CULVERT & UNDERPASS
OMAND'S CREEK CULVERT REHABILITATION,
UNDERPASS ROADWAY RESURFACING
AND RELATED WORKS

CREEK CHANNEL CROSS SECTIONS
SOUTH OF CULVERT

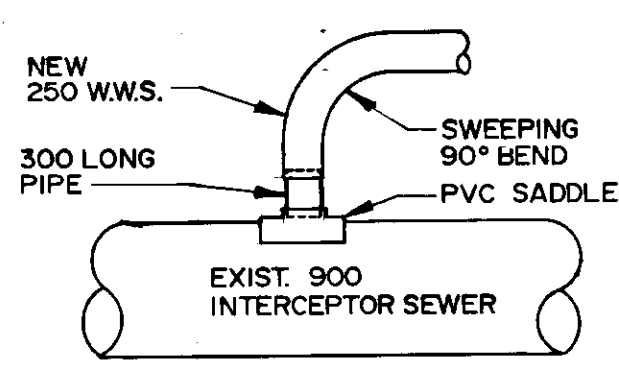
CITY DRAWING NUMBER: U200-95-06A
SHEET OF: [Blank]
B-5983-6A

RECORD DRAWING
APPROVED BY: [Signature] DATE: 20/20/96



NEW 150 Ø WATERMAIN DETAIL
N.T.S.

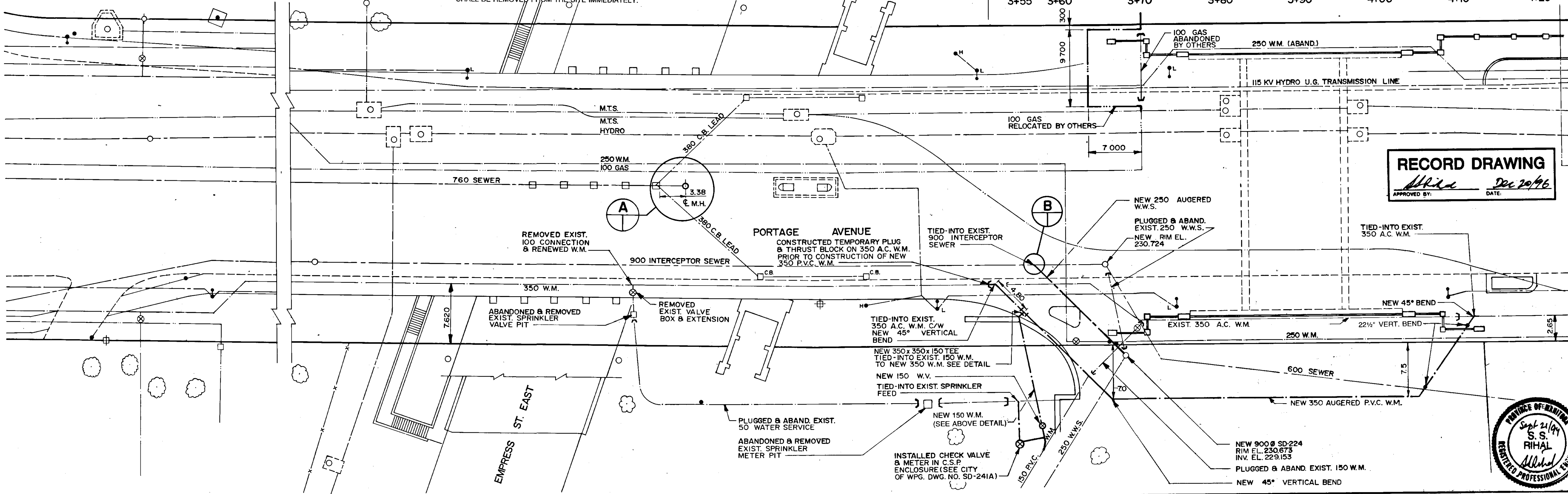
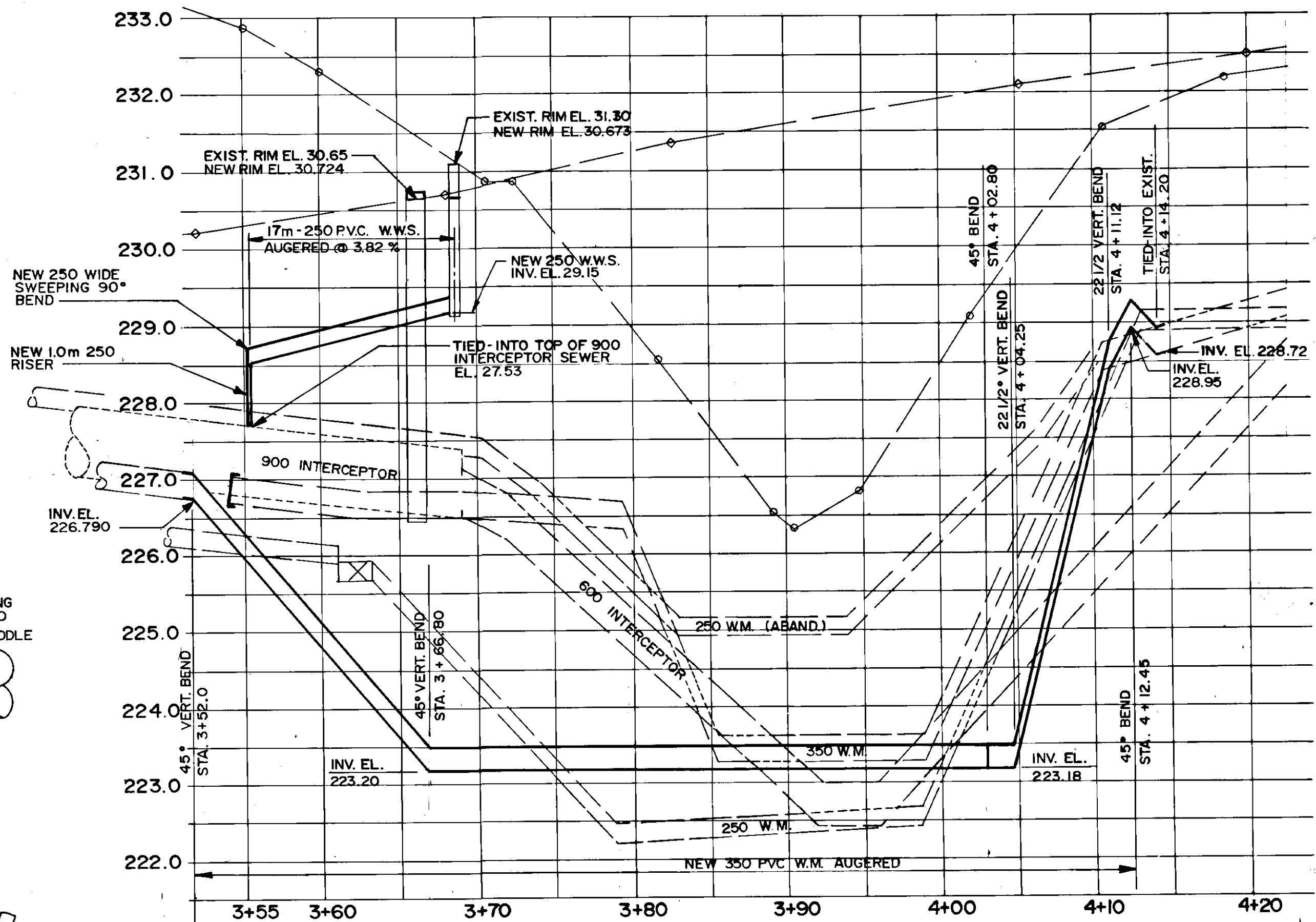
DETAIL A
N.T.S.



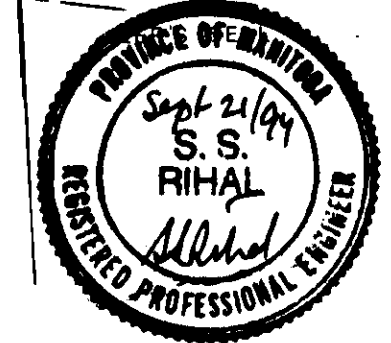
DETAIL B
N.T.S.

NOTES

- SHAFTS FOR WATERMAIN INSTALLATION TO BE BACKFILLED WITH INSITU MATERIAL OR AS INDICATED ON AUGER SHAFT DETAIL.
- THE WATERMAIN SHALL BE INSTALLED BY AUGERING. IF AUGERING IS DETERMINED BY THE CONTRACT ADMINISTRATOR TO BE IMPOSSIBLE, THEN AN APPROVED OPEN CUT INSTALLATION MAY BE REQUIRED.
- EXCAVATED MATERIAL SHALL AT NO TIME BE STOCKPILED AT OR NEAR THE TOP EDGE OF THE EMBANKMENT AND SLOPES. SURPLUS EXCAVATED MATERIAL SHALL BE REMOVED FROM THE SITE IMMEDIATELY.



RECORD DRAWING
APPROVED BY: *[Signature]* DATE: Dec 20/96



EXISTING	LEGEND-PLAN	PROPOSED	EXISTING	LEGEND-PLAN	PROPOSED	EXISTING	LEGEND-PROFILE	PROPOSED
150 mm W.M.	WATERMAIN	150 mm W.M.	HYDRO	---	---	150 mm W.M.	WATERMAIN	---
300 mm L.D.S.	LAND DRAINAGE SEWER	300 mm L.D.S.	CONCRETE	---	---	300 mm L.D.S.	LAND DRAINAGE SEWER	---
250 mm W.W.S.	WASTE WATER SEWER	250 mm W.W.S.	ASPHALT	---	---	250 mm W.W.S.	WASTE WATER SEWER	---
○	MANHOLE	●	PROPERTY LINE	---	---	○	WASTE WATER SEWER	---
▽	CATCH BASIN	▽	SURVEY BAR	---	---	○	WASTE WATER SEWER	---
□	CURB INLET	□				○	WASTE WATER SEWER	---
+	JUNCTIONS	+				○	WASTE WATER SEWER	---
---	CULVERT	---				○	WASTE WATER SEWER	---
---	GAS	---				○	WASTE WATER SEWER	---

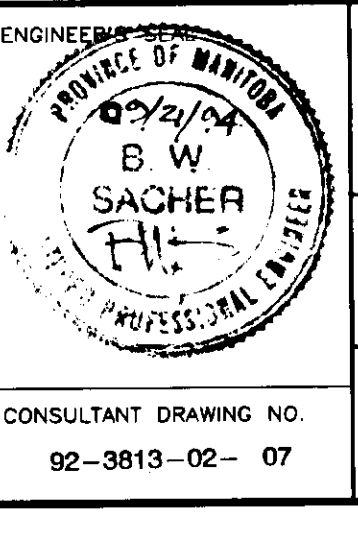
UNDERGROUND STRUCTURES
DATE: _____
NOTE: LOCATION OF UNDERGROUND STRUCTURES AS SHOWN ARE BASED ON THE BEST INFORMATION AVAILABLE. BUT NO GUARANTEE IS GIVEN THAT ALL EXISTING UTILITIES ARE SHOWN OR THAT THE GIVEN LOCATIONS ARE EXACT. CONFIRMATION OF EXISTENCE AND EXACT LOCATION OF ALL SERVICES MUST BE OBTAINED FROM THE INDIVIDUAL UTILITIES BEFORE PROCEEDING WITH CONSTRUCTION.

NO.	REVISIONS	DATE	BY

DILLON
Consulting Engineers • Planners
Environmental Scientists

DESIGNED BY: B.W.S.
DRAWN BY: D.M.W.
HOR. SCALE: 1:250
VERTICAL: 1:50
DATE: SEPT 94

CHECKED BY: B.W.S./S.S.R.
APPROVED BY: *[Signature]*
DATE: _____
G.B. SMITH / SENIOR ENGINEER
B. BRIDGEMAN / BRIDGE ENGINEER



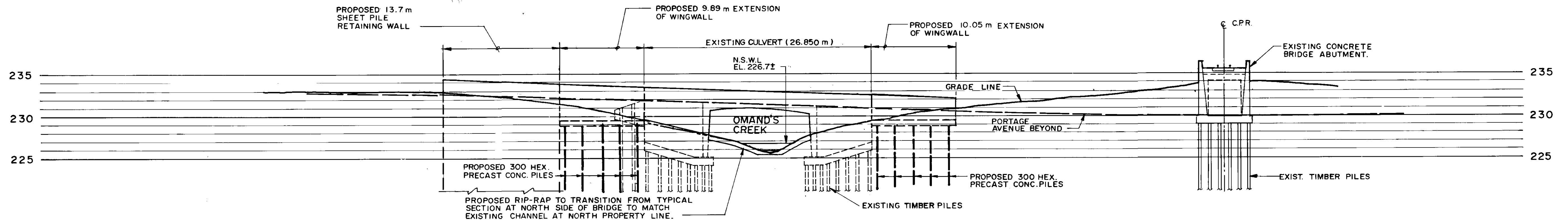
THE CITY OF WINNIPEG
WORKS AND OPERATIONS DIVISION
STREETS AND TRANSPORTATION DEPARTMENT

PORTAGE AVE. CULVERT & UNDERPASS
OMAND'S CREEK CULVERT REHABILITATION,
UNDERPASS ROADWAY RESURFACING
AND RELATED WORKS

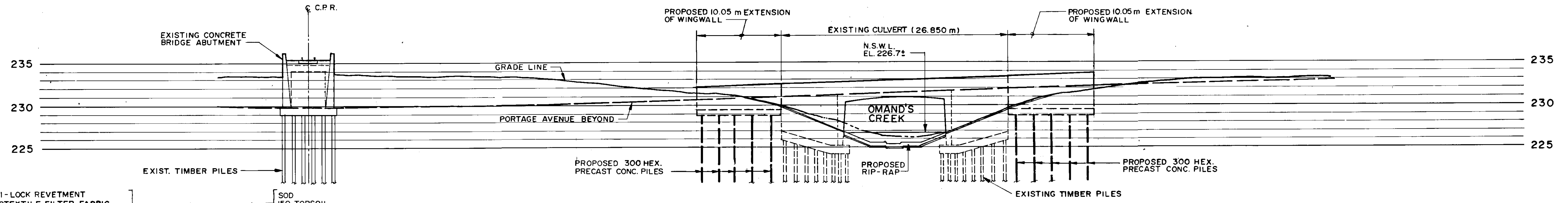
CITY DRAWING NUMBER: U200-95-07
SHEET OF _____

UNDERGROUND UTILITY RELOCATIONS
AND RELATED WORKS

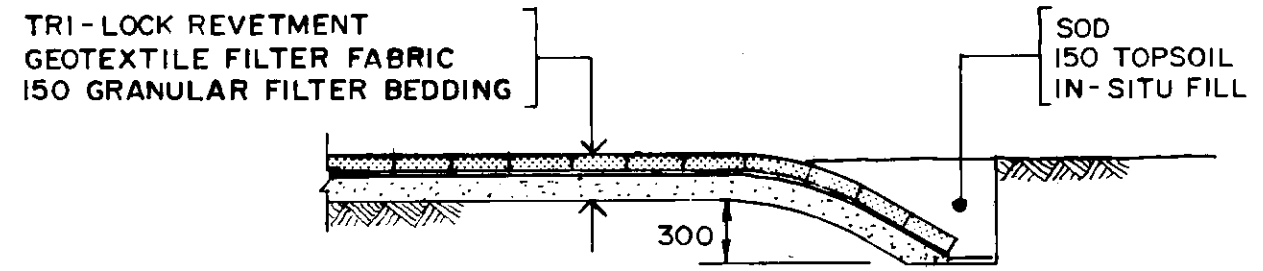
B-5983-7



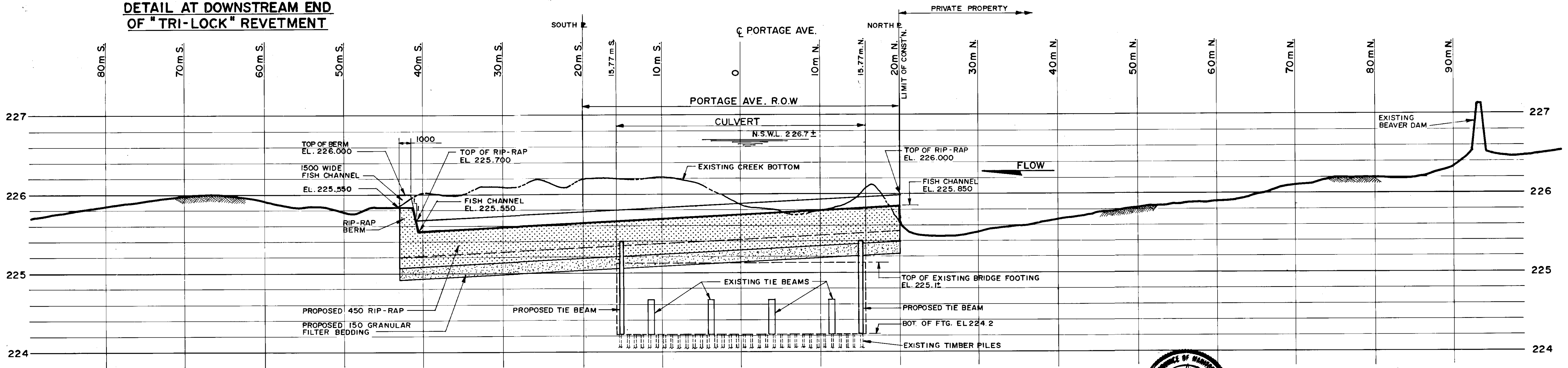
SECTION ALONG NORTH PROPERTY LINE OF PORTAGE AVENUE (LOOKING SOUTH)
SCALE 1: 250



SECTION ALONG SOUTH PROPERTY LINE OF PORTAGE AVENUE (LOOKING NORTH)
SCALE 1: 250



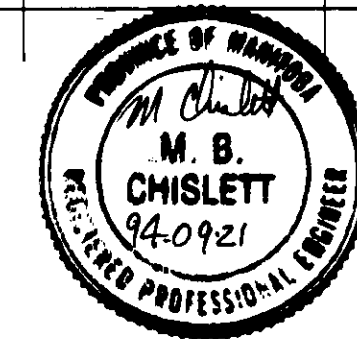
DETAIL AT DOWNSTREAM END OF "TRI-LOCK" REVETMENT



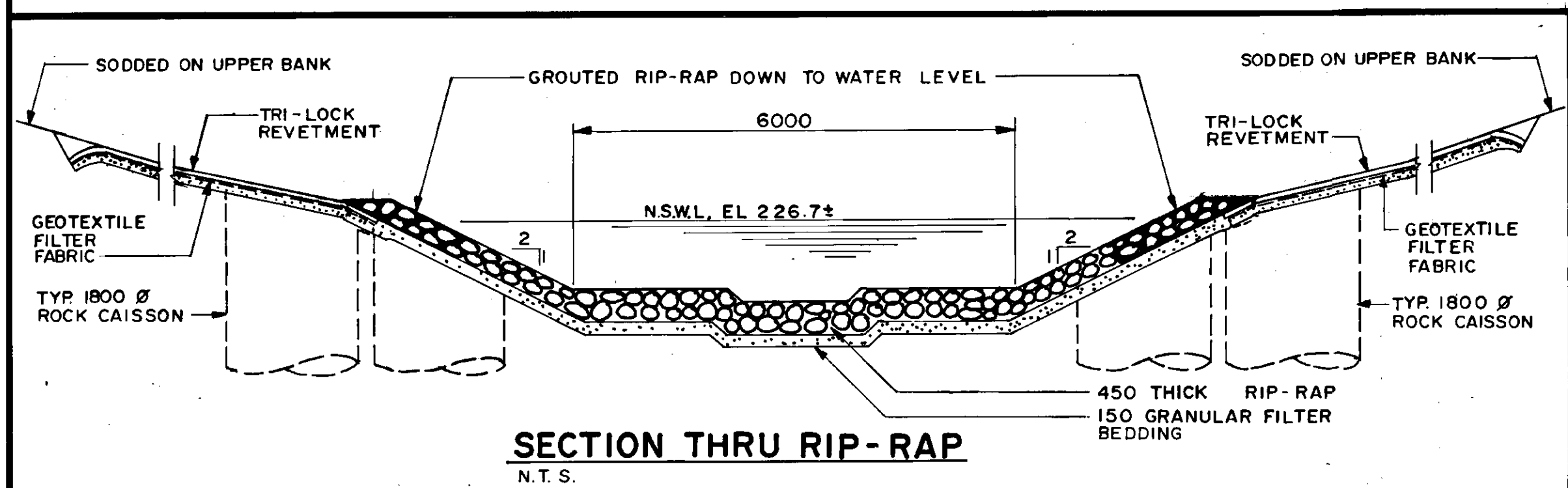
PROFILE OF CREEK BOTTOM (LOOKING WEST)

SCALE: HOR. 1: 250
VERT. 1: 25

NOTE: UTILITY PIPES UNDER CREEK BED NOT SHOWN FOR CLARITY



RECORD DRAWING
APPROVED BY: *[Signature]* DATE: 20/20/96



SECTION THRU RIP-RAP
N.T.S.

NO.	REVISIONS	DATE	BY

DILLON
Consulting Engineers - Planners
Environmental Scientists

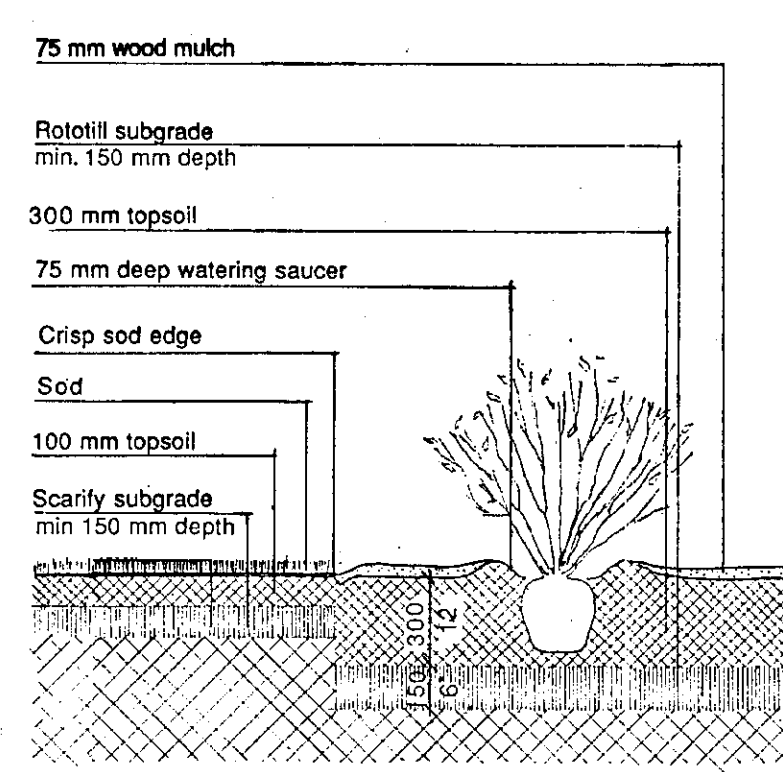
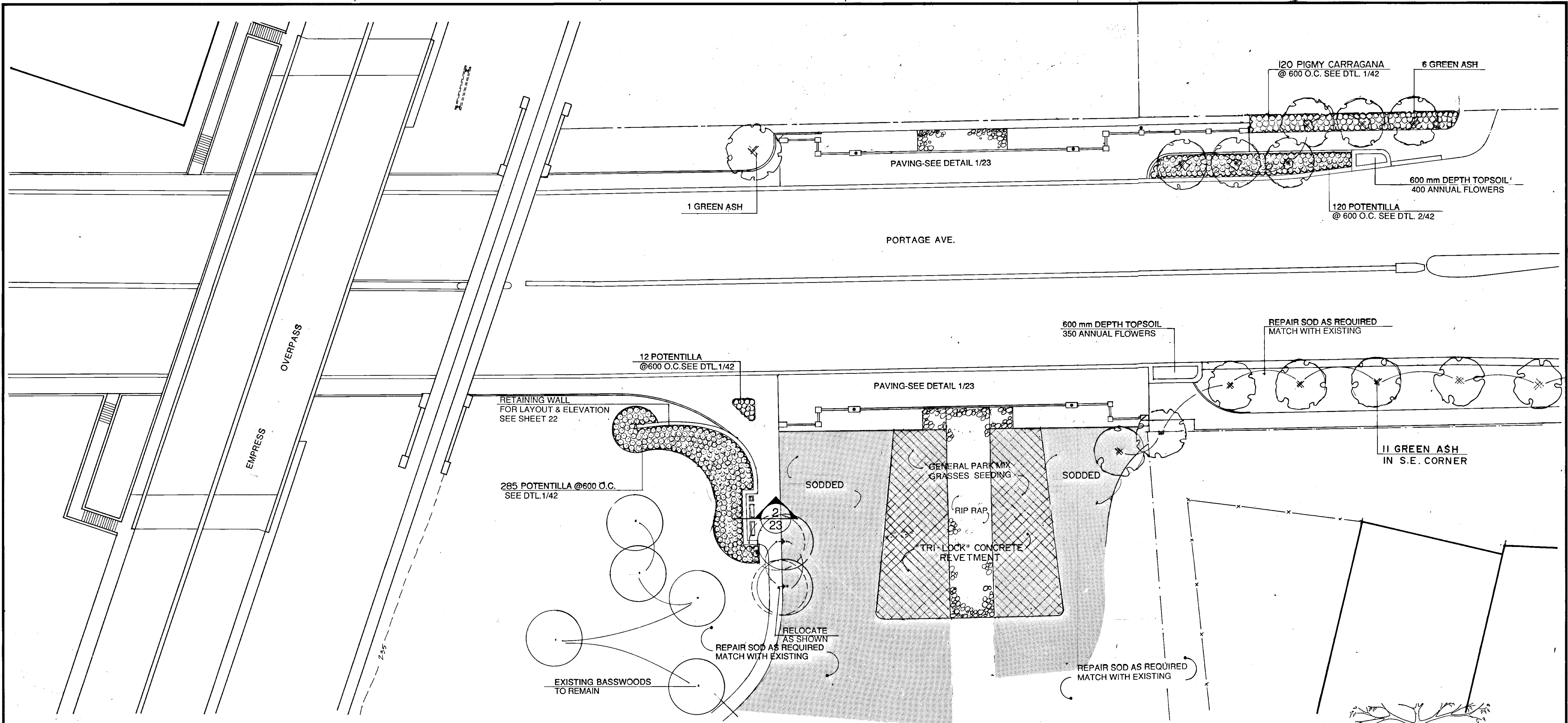
DESIGNED BY: S.S.R. CHECKED BY: S.S.R./M.B.C.
DRAWN BY: W.P.S. APPROVED BY: *[Signature]*
HOR. SCALE: AS SHOWN
VERTICAL: AS SHOWN
DATE: SEPT 1994

ENGINEER: *[Signature]*
S.S. RIMAL
CONSULTANT DRAWING NO. 92-3813-02-08

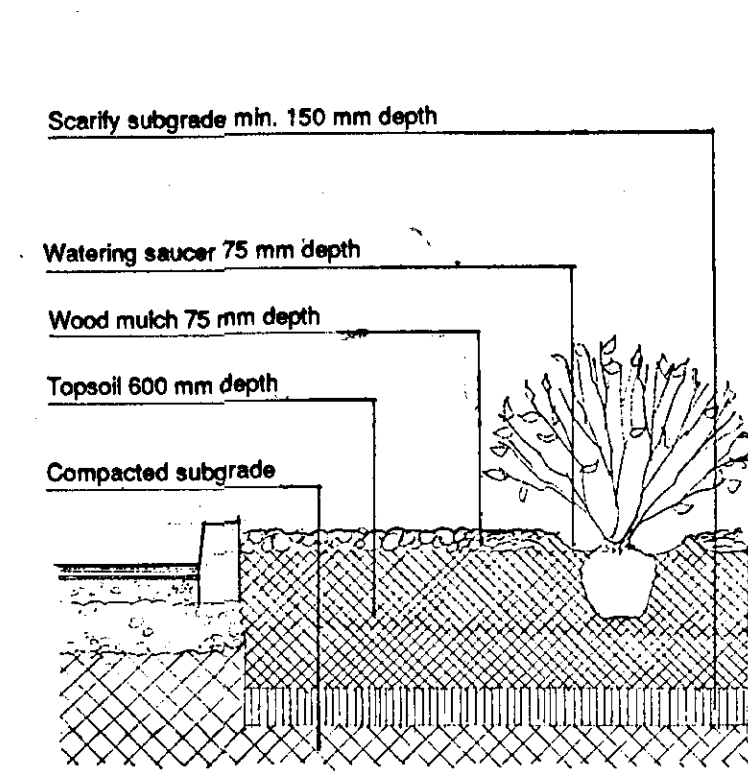
THE CITY OF WINNIPEG
WORKS AND OPERATIONS DIVISION
STREETS AND TRANSPORTATION DEPARTMENT

PORTAGE AVE. CULVERT & UNDERPASS
OMAND'S CREEK CULVERT REHABILITATION,
UNDERPASS ROADWAY RESURFACING
AND RELATED WORKS

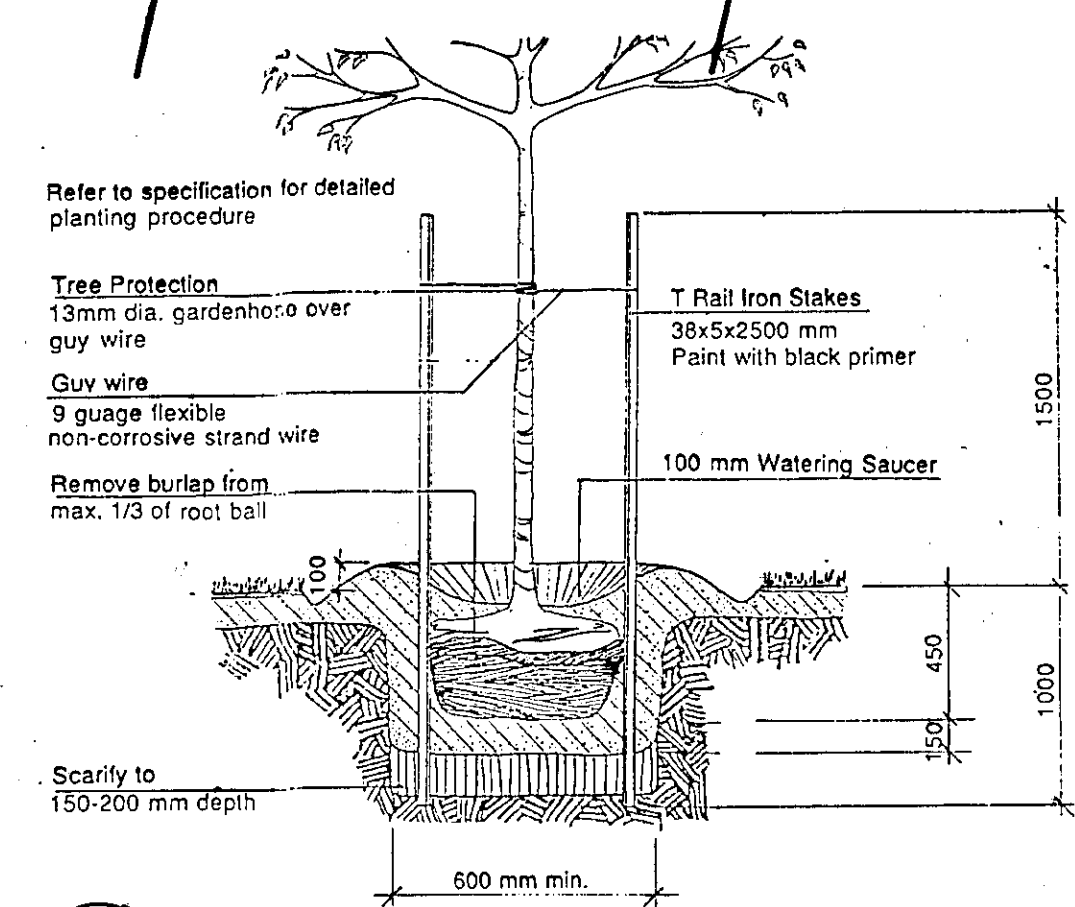
CITY DRAWING NUMBER: U200-95-08
SHEET OF
OMAND'S CREEK
CROSS SECTIONS & PROFILE
B-5983-8



1 SHRUB PLANTING DETAIL
42 NOT TO SCALE



2 SHRUB PLANTING DETAIL
42 NOT TO SCALE



3 DECIDUOUS TREE PLANTING DETAIL
42 NOT TO SCALE

RECORD DRAWING
APPROVED BY: *[Signature]* DATE: 04/20/96

B.M. ELEV.		Hilderman Witty Crosby & Hanna Associates Landscape Architects & Planners	DILLON Consulting Engineers, Planners & Environmental Scientists
DESIGNED BY	G. H.	CHECKED BY	G. H. / N. J.
DRAWN BY	N. J.	APPROVED BY	<i>[Signature]</i>
HOR. SCALE:	1:250	AUTHORIZED BY	<i>[Signature]</i> DATE: 9/11/12
VERTICAL:		ACCEPTED BY	<i>[Signature]</i> DATE: 9/11/12
NO. REVISIONS		DATE	SEPT. 1994

ENGINEER'S SEAL
G. HILDERMAN
MEMBER NO. *[Number]*
CONSULTANT DRAWING NO. 92-3813-02-43

THE CITY OF WINNIPEG
WORKS AND OPERATIONS DIVISION
STREETS AND TRANSPORTATION DEPARTMENT

PORTAGE AVE. CULVERT & UNDERPASS
OMAND'S CREEK CULVERT REHABILITATION, UNDERPASS, ROADWAY RESURFACING AND RELATED WORKS

CITY DRAWING NUMBER U200-95-43
SHEET OF

LANDSCAPING & PLANTING
B-5983-39