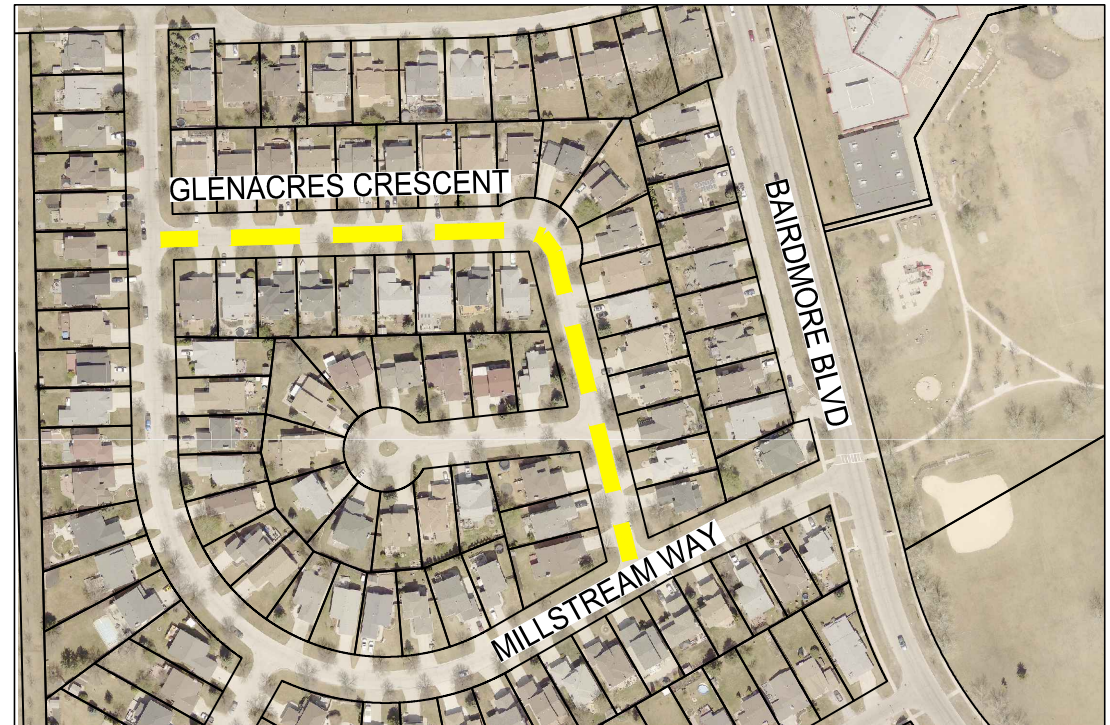




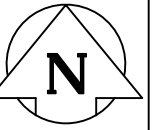
McGILL AVENUE - McMASTERS ROAD TO SILVERSTONE AVENUE

SCALE 1:3000



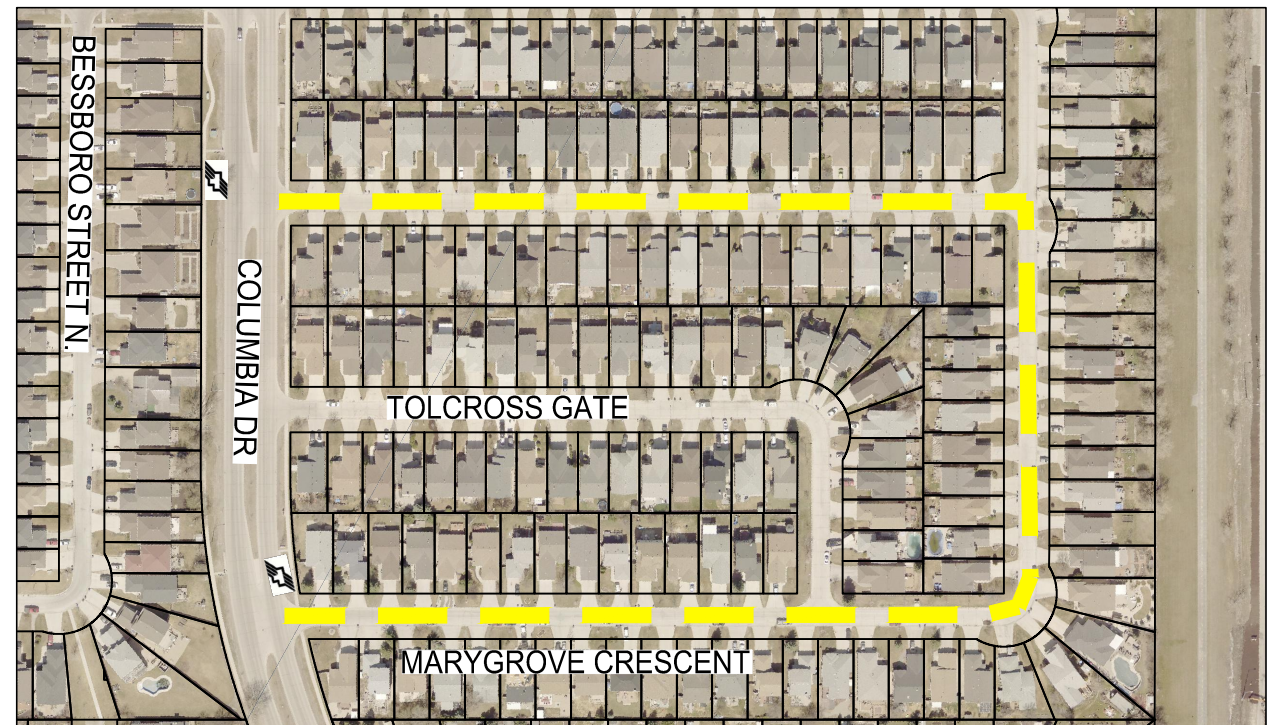
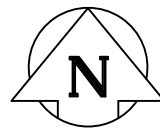
GLENACRES CRESCENT - MILLSTREAM WAY TO MILLSTREAM WAY

SCALE 1:3000



LEAMINGTON GATE - BURLINGTON WAY TO COLUMBIA DRIVE

SCALE 1:3000



MARYGROVE CRESCENT - COLUMBIA DRIVE TO COLUMBIA DRIVE

SCALE 1:3000



PRELIMINARY

LEGEND



BUS ROUTE



SCHOOL LOCATION



LIMIT OF CONSTRUCTION

NOTE:

These design documents are prepared solely for the use by the party with whom the design professional has entered into a contract and there are no representations of any kind made by the design professional to any party with whom the design professional has not entered into a contract.

METRIC

WHOLE NUMBERS INDICATE MILLIMETRES
DECIMALIZED NUMBERS INDICATE METRES



LOCATIONS APPROVED UNDERGROUND STRUCTURES

SIGNED BY: _____ DATE: _____
SHP UG STRUCTURES _____ DATE _____
LOCATION OF UNDERGROUND STRUCTURES AS SHOWN ARE BASED ON THE BEST INFORMATION AVAILABLE BUT NO GUARANTEE IS GIVEN THAT ALL EXISTING UTILITIES ARE SHOWN OR THAT THE GIVEN LOCATIONS ARE EXACT CONFIRMATION OF EXISTENCE AND EXACT LOCATION OF ALL SERVICES MUST BE OBTAINED FROM THE INDIVIDUAL UTILITIES BEFORE PROCEEDING WITH CONSTRUCTION.

NO.	REVISIONS	DATE	BY
2	ISSUED FOR TENDER	09/07/21	VM
1	ISSUED FOR CLIENT REVIEW	25/06/21	VM

wsp		WSP Canada Group Limited Suite 111 - 93 Lombard Ave Winnipeg, MB R3B 3B1 T. 204.943.3178 F. 204.943.4948 www.wsp.com	
DESIGNED BY	MS	CHECKED BY	VM
DRAWN BY	TW	APPROVED BY	VM
HOR. SCALE	VARIES	RELEASED FOR CONSTRUCTION	
VERTICAL		DATE	
DATE 09-JULY-2021			

ENGINEER'S SEAL	
CONSULTANT ACAD DWG. NO.	211-06451-03-03

THE CITY OF WINNIPEG
PUBLIC WORKS DEPARTMENT
ENGINEERING SERVICES DIVISION

2021 THIN BITUMINOUS OVERLAY (TBO) PROGRAM

MCGILL AVENUE, GLENACRES CRESCENT
LEAMINGTON GATE, MARY GROVE CRESCENT
ASPHALT OVERLAY

CITY DRAWING NUMBER
SHEET 3 OF 4

BID NO.
451-2021