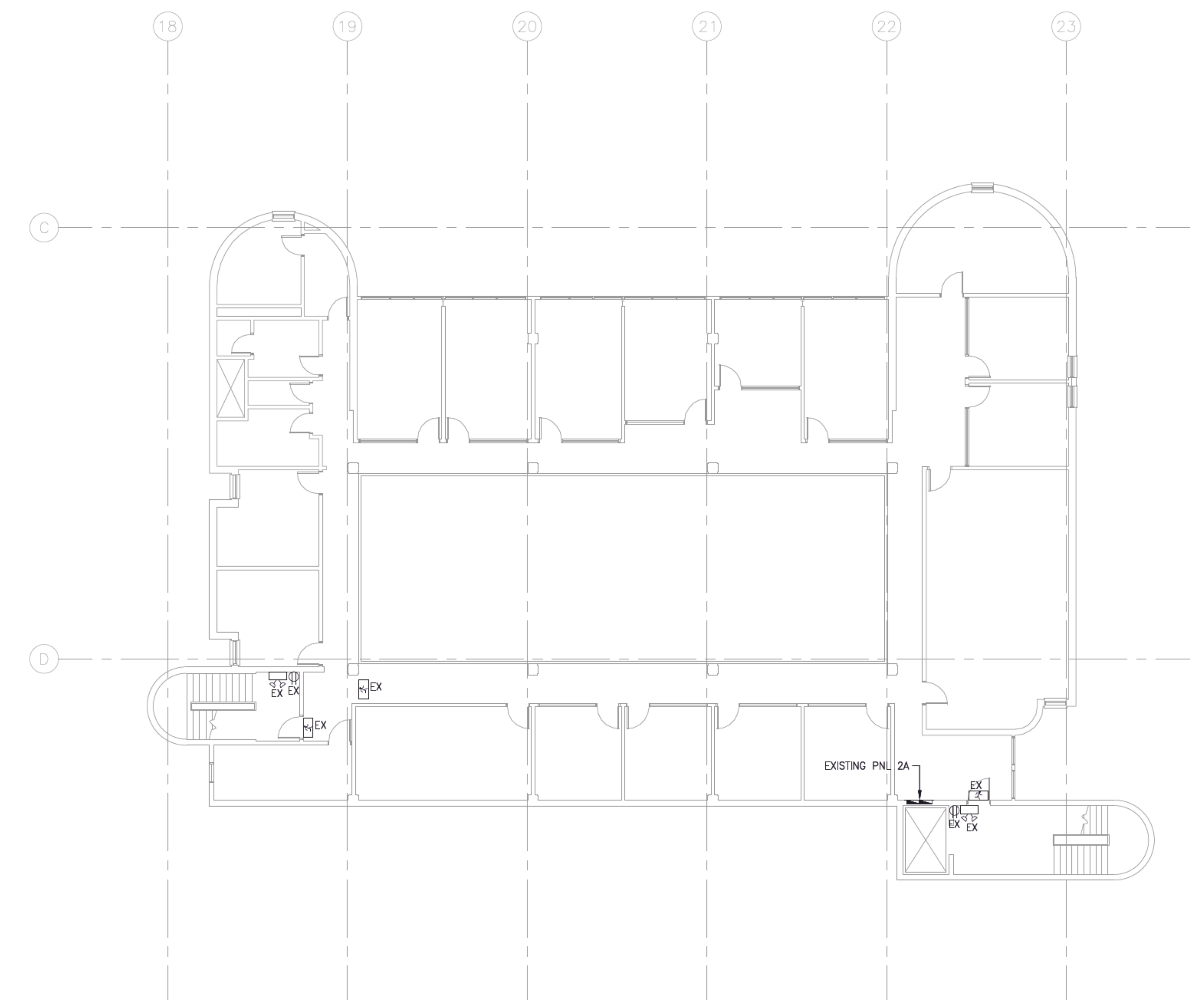
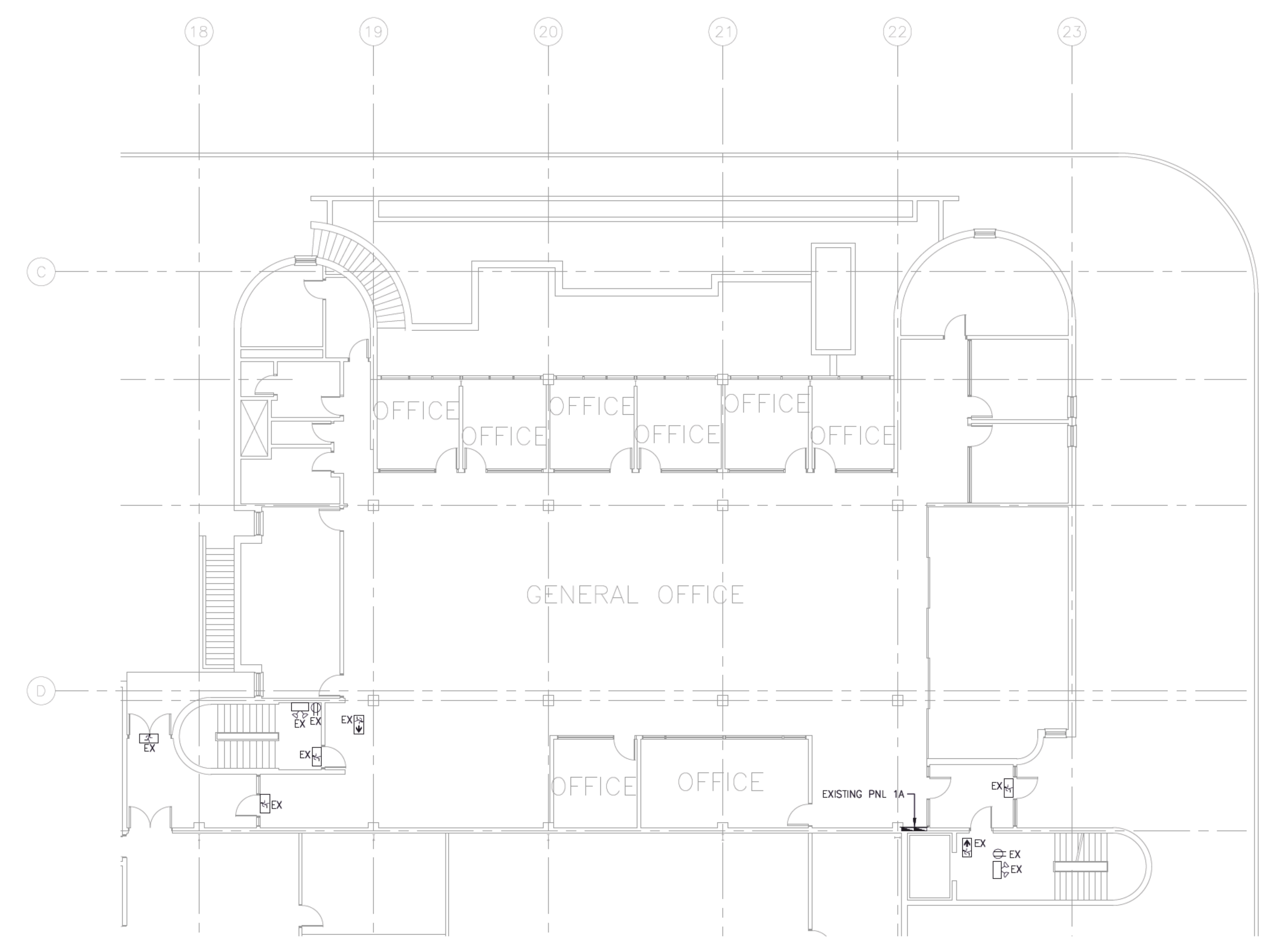


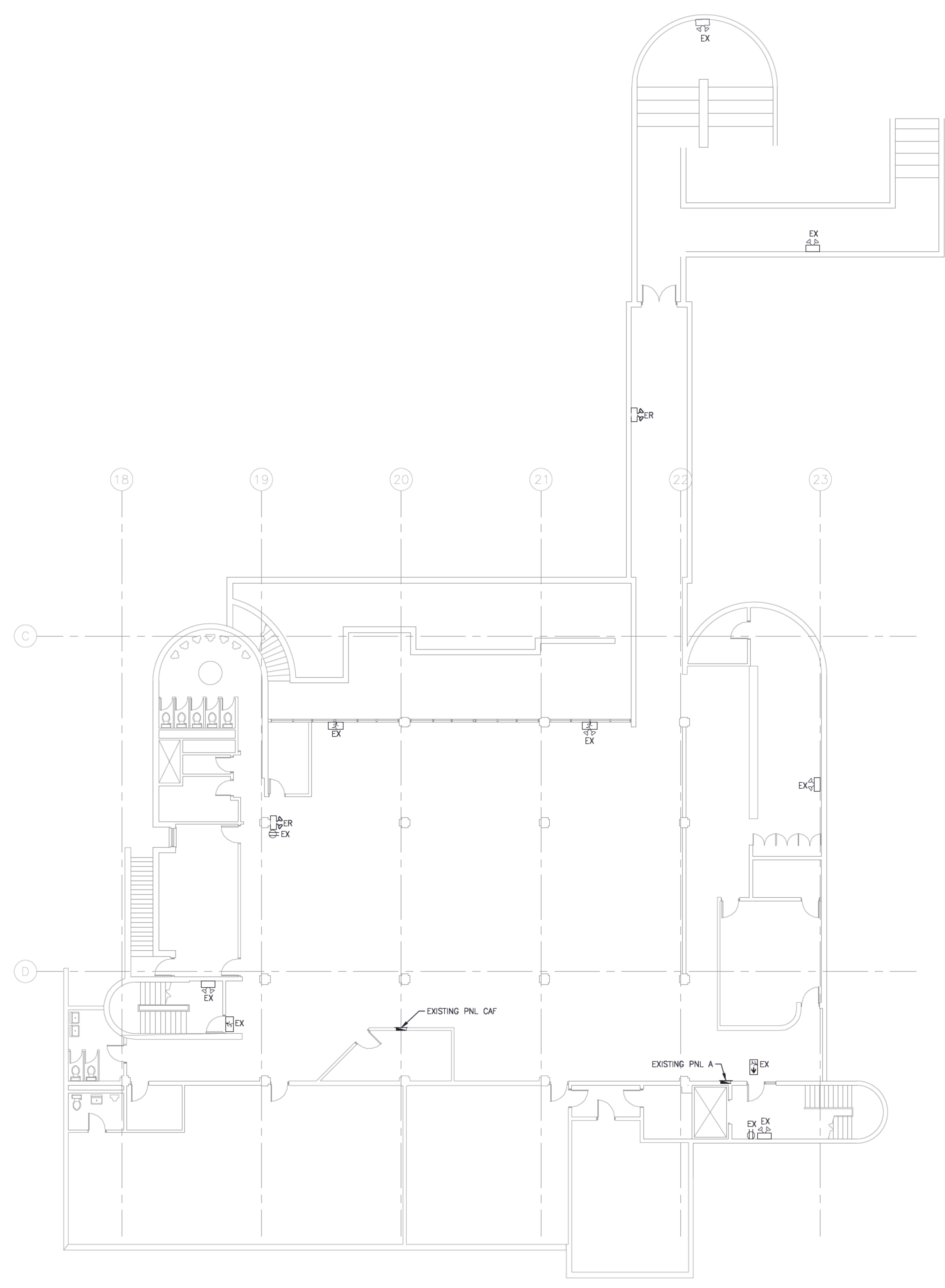
SITE KEY PLAN
N.T.S.



SECOND FLOOR
SCALE: 3/32"=1'-0"



MAIN FLOOR
SCALE: 3/32"=1'-0"



BASEMENT
SCALE: 3/32"=1'-0"

NO.	ISSUED FOR CONSTRUCTION	DATE	BY
0	ISSUED FOR CONSTRUCTION	2021-09-15	JRF

TOWER ENGINEERING
Project: 191529
towereng.ca
Calgary: 403-235-2655
Winnipeg: 204-925-1150

These design documents are prepared solely for the use by the party with whom the design professional has entered into a contract and there are no representations of any kind made by the design professional to any party with whom the design professional has not entered into a contract. Any use of the drawing, disk or electronic data without the expressed written permission of Tower Engineering Group is strictly prohibited. The contractor is responsible to verify all dimensions with conditions on the site and report discrepancies to Tower Engineering for adjustment. All prints to be returned.

SEAL

APEGM
Certificate of Authorization
Tower Engineering Group
No 4156

PROJECT

TRANSIT EMERGENCY LIGHTING
421 OSBORNE
WINNIPEG, MANITOBA

DRAWING

**BUILDING A
DEMOLITION PLAN**

DESIGNED:	JRF	DRAWING NO.	505-2021_DRAWING_E1.2
DRAWN:	VRR	REVISION	R0
CHECKED:	SMM		
SCALE:	AS NOTED		
PLOT DATE:	2021-09-15		
PROJECT NO.:	191529		