

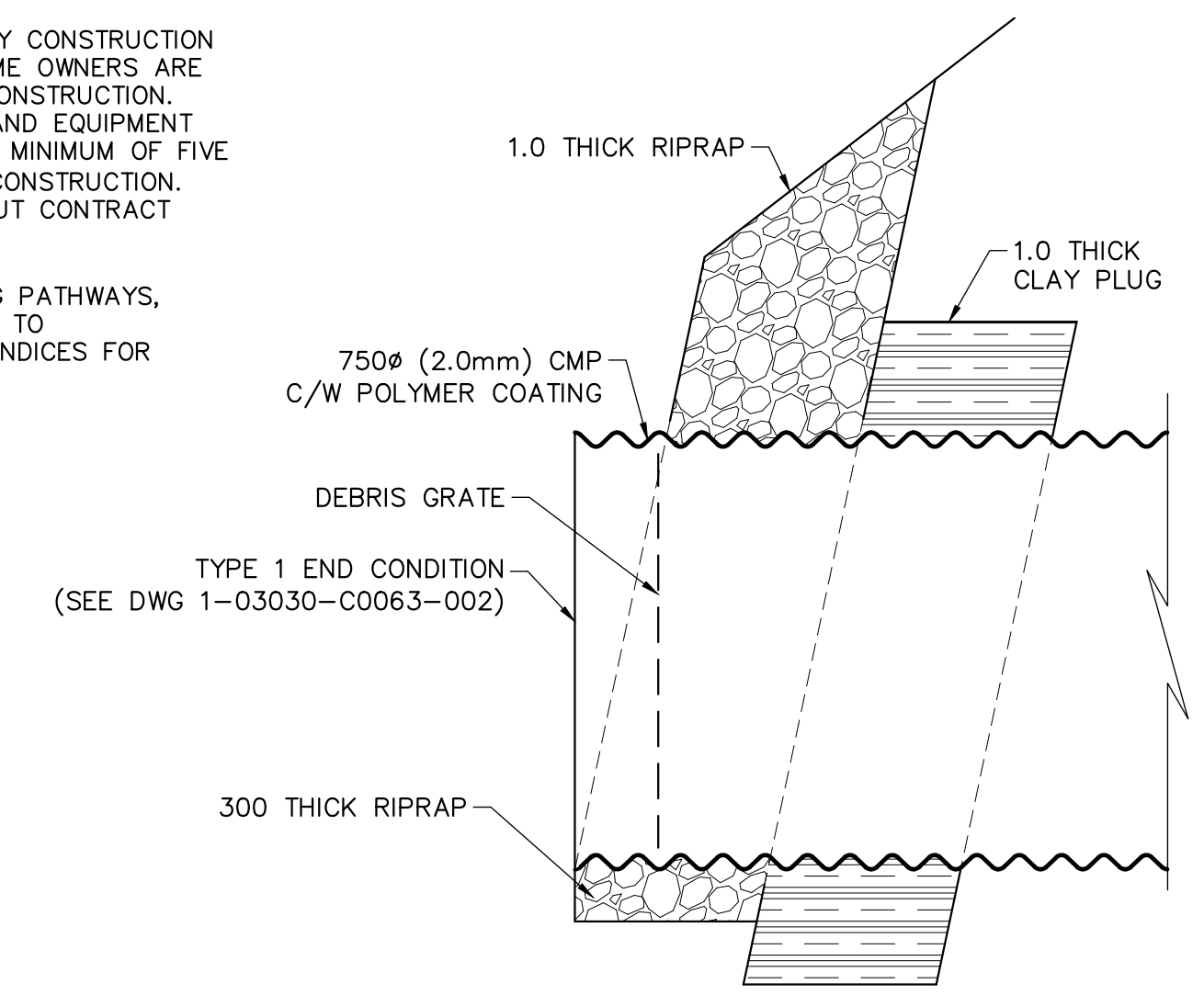
LOOKING DOWNSTREAM FROM INTERMEDIATE MH
DATE 2021-03



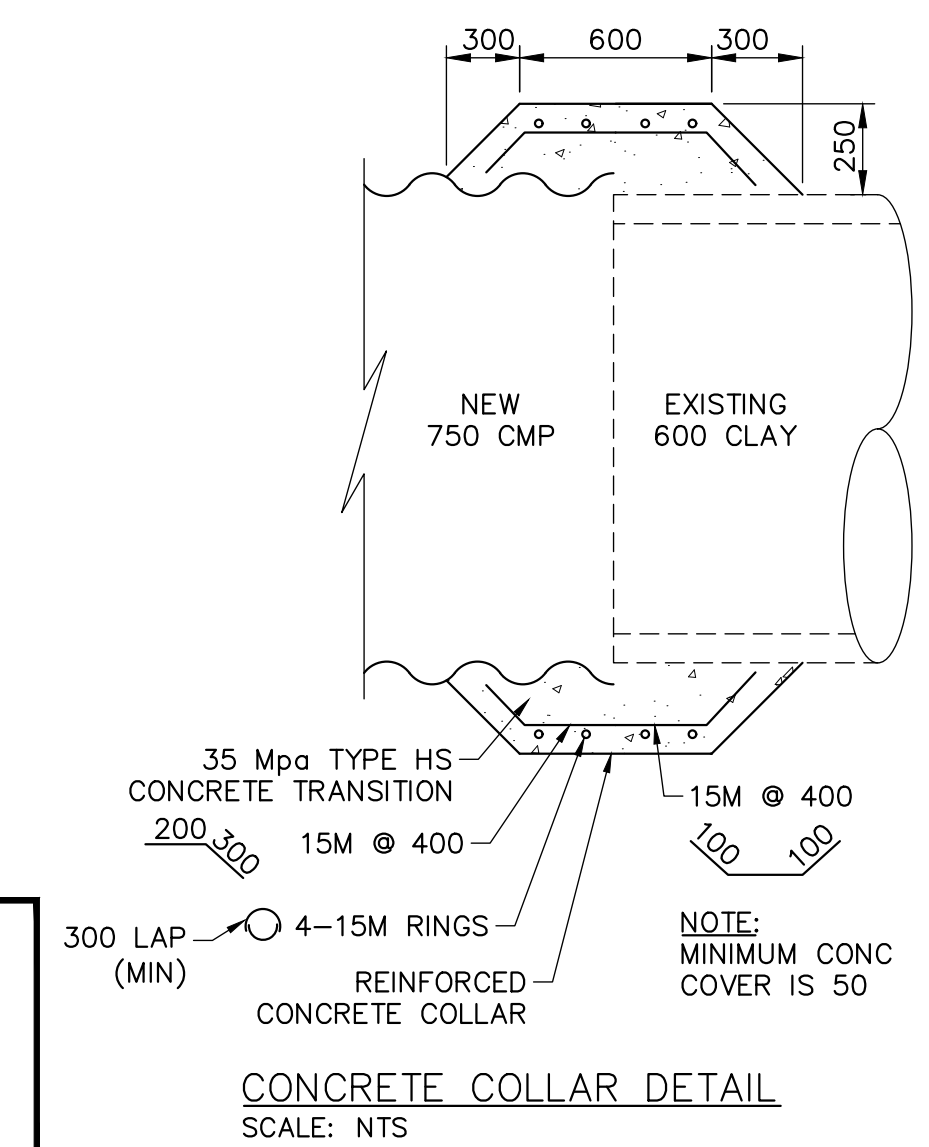
LOOKING DOWNSTREAM FROM ~0+94
DATE 2021-03

- NOTES:**
1. ALL EXCAVATED MATERIAL WITHIN 107.0 OF THE ASRL MUST BE REMOVED FROM SITE (NO STOCKPILING).
 2. CONSTRUCT TEMPORARY CLAY COFFERDAM OR SANDBAG DIKE AT RIVER AS REQUIRED TO FACILITATE CONSTRUCTION.
 3. PERMITS AS REQUIRED FOR CONSTRUCTION OF TEMPORARY ACCESS ARE THE RESPONSIBILITY OF THE CONTRACTOR.
 4. ALL MATERIALS, INCLUDING TEMPORARY MATERIAL PLACED FOR CONSTRUCTION EQUIPMENT ACCESS, MUST BE REMOVED FROM SITE FOLLOWING COMPLETION OF CONSTRUCTION.
 5. CONTRACTOR IS ADVISED THAT TEMPORARY CONSTRUCTION ACCESS AGREEMENTS WITH ADJACENT HOME OWNERS ARE EXPECTED TO BE IN PLACE AT TIME OF CONSTRUCTION. CONTRACTOR TO PROVIDE ACCESS PLAN AND EQUIPMENT LIST TO THE CONTRACT ADMINISTRATOR A MINIMUM OF FIVE (5) BUSINESS DAYS PRIOR TO STARTING CONSTRUCTION. CONTRACTOR NOT TO ACCESS SITE WITHOUT CONTRACT ADMINISTRATOR'S APPROVAL.
 6. CONTRACTOR TO RESTORE SITE, INCLUDING PATHWAYS, DRIVEWAYS, AND LANDSCAPING FEATURES, TO PRE-CONSTRUCTION CONDITION. SEE APPENDICES FOR ADDITIONAL SITE PHOTOS.

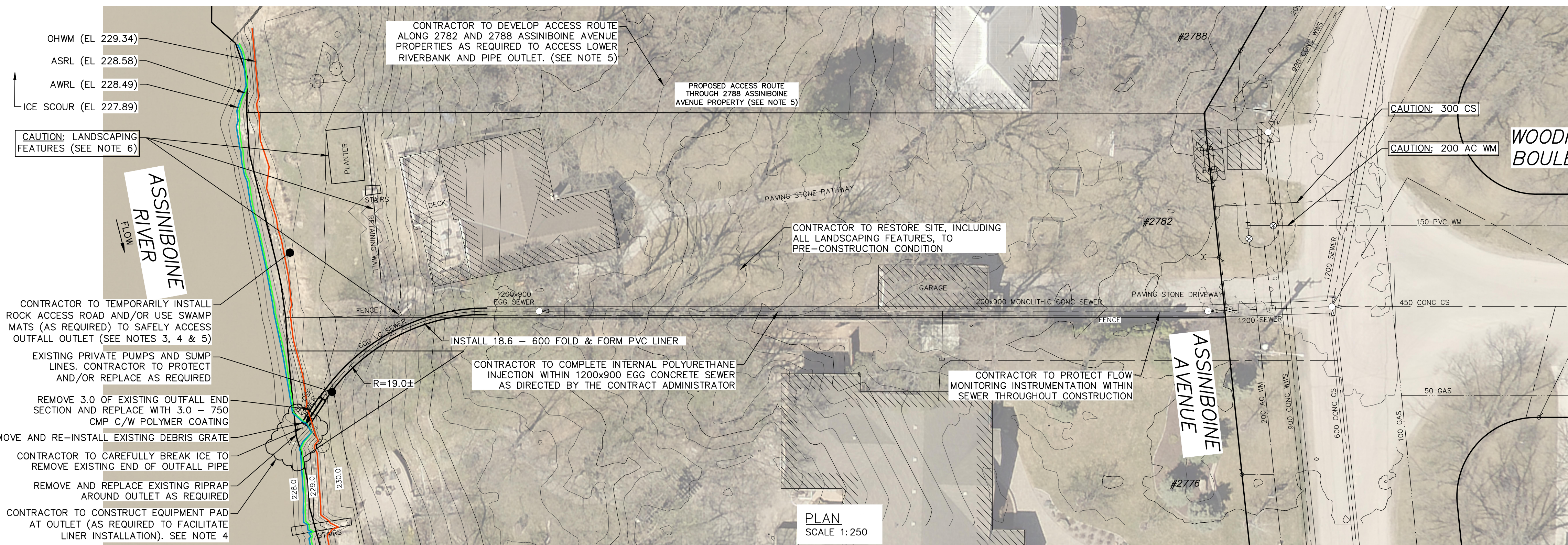
NOTE: CHAINAGES SHOWN ARE ALONG C EXISTING OUTFALL



CULVERT END DETAIL
SCALE: NTS



ENGINEERS
GEOSCIENTISTS
MANITOBA
Certificate of Authorization
KGS Group
No. 245



OHWM (EL 229.34)
ASRL (EL 228.58)
AWRL (EL 228.49)
ICE SCOUR (EL 227.89)

CAUTION: LANDSCAPING FEATURES (SEE NOTE 6)

CONTRACTOR TO TEMPORARILY INSTALL ROCK ACCESS ROAD AND/OR USE SWAMP MATS (AS REQUIRED) TO SAFELY ACCESS OUTFALL OUTLET (SEE NOTES 3, 4 & 5)

EXISTING PRIVATE PUMPS AND SUMP LINES. CONTRACTOR TO PROTECT AND/OR REPLACE AS REQUIRED

REMOVE 3.0 OF EXISTING OUTFALL END SECTION AND REPLACE WITH 3.0 - 750 CMP C/W POLYMER COATING

REMOVE AND RE-INSTALL EXISTING DEBRIS GRATE

CONTRACTOR TO CAREFULLY BREAK ICE TO REMOVE EXISTING END OF OUTFALL PIPE

REMOVE AND REPLACE EXISTING RIPRAP AROUND OUTLET AS REQUIRED

CONTRACTOR TO CONSTRUCT EQUIPMENT PAD AT OUTLET (AS REQUIRED TO FACILITATE LINER INSTALLATION). SEE NOTE 4

CONTRACTOR TO RESTORE SITE, INCLUDING ALL LANDSCAPING FEATURES, TO PRE-CONSTRUCTION CONDITION

CONTRACTOR TO COMPLETE INTERNAL POLYURETHANE INJECTION WITHIN 1200x900 EGG CONCRETE SEWER AS DIRECTED BY THE CONTRACT ADMINISTRATOR

CONTRACTOR TO DEVELOP ACCESS ROUTE ALONG 2782 AND 2788 ASSINIBOINE AVENUE PROPERTIES AS REQUIRED TO ACCESS LOWER RIVERBANK AND PIPE OUTLET. (SEE NOTE 5)

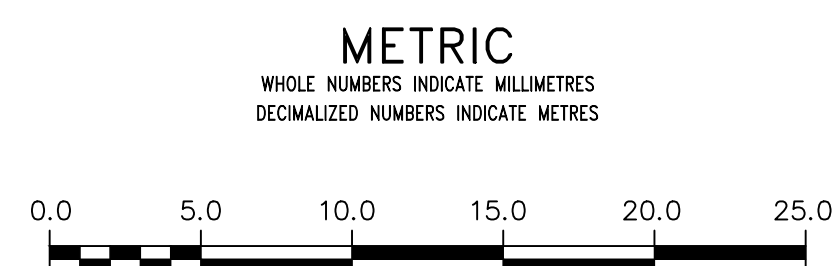
PROPOSED ACCESS ROUTE THROUGH 2788 ASSINIBOINE AVENUE PROPERTY (SEE NOTE 5)

INSTALL 18.6 - 600 FOLD & FORM PVC LINER

INSTALL 3.0 - 750 CMP C/W POLYMER COATING

PLAN SCALE 1:250

FOR INDEX PAGE SEE DWG 1-03030-D0009-001



WARNING
IF POWER EQUIPMENT OR EXPLOSIVES ARE TO BE USED FOR EXCAVATION ON THIS PROJECT THE CONTRACTOR MUST:

- 1) NOTIFY THE GAS COMPANY OF THE PROPOSED LOCATION OF EXCAVATION.
- 2) TAKE PRECAUTION TO AVOID DAMAGE TO GAS COMPANY INSTALLATIONS.

SEE PROVINCIAL REGULATION 210/72 FOR DETAILS

LOCATION APPROVED UNDERGROUND STRUCTURES

SUPV. U/G STRUCTURES COMMITTEE: _____ DATE: _____

NOTE:
LOCATION OF UNDERGROUND STRUCTURES AS SHOWN ARE BASED ON THE BEST INFORMATION AVAILABLE BUT NO GUARANTEE IS GIVEN THAT ALL EXISTING UTILITIES ARE SHOWN OR THAT THE GIVEN LOCATIONS ARE EXACT. CONFIRMATION OF EXISTENCE AND EXACT LOCATION OF ALL SERVICES MUST BE OBTAINED FROM THE INDIVIDUAL UTILITIES BEFORE PROCEEDING WITH CONSTRUCTION.

B.M. ELEV.			
NO.	ISSUED FOR TENDER	2021 11 05	
	REVISIONS	DATE	BY

KGS GROUP

DESIGNED BY	NGV	CHECKED BY	
DRAWN BY	GEL	APPROVED BY	
SCALE:		RELEASED FOR CONSTRUCTION	
HORIZONTAL	1:250		
VERTICAL	1:50		
DATE	2021 11 04		

PLOT DATE: 2021 11 04

ENGINEER'S SEAL

CONSULTANT DRAWING NUMBER: 1-03030-C0045-001

THE CITY OF WINNIPEG
WATER AND WASTE DEPARTMENT
ENGINEERING DIVISION

2020-2021 OUTFALL PROGRAM
RENEWAL AND REHABILITATION

2782 ASSINIBOINE AVENUE OUTFALL
PLAN AND PROFILE
S-MA70073365

SHEET **8** OF **26**
CITY DRAWING NUMBER: 1-03030-C0045-001